

# ***Ingleside draft Land Use and Infrastructure Strategy***

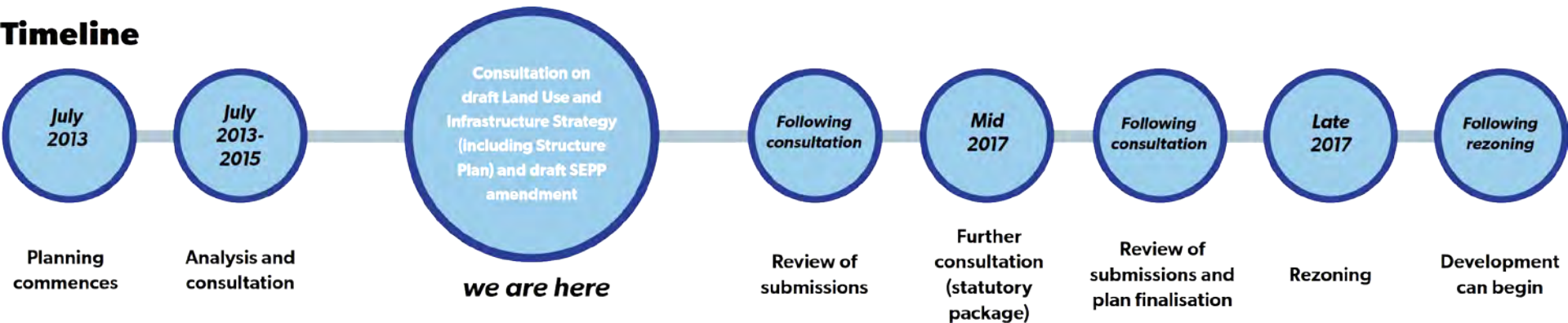
**Ingleside Community Reference Group  
briefing**

***Ian Connolly, Cox Richardson – Master planners  
19 December 2016***

# We are consulting on

- The draft Land Use and Infrastructure Strategy
- The Structure Plan
- The technical studies
- A draft amendment to the *State Environmental Planning Policy (Sydney Region Growth Centres 2006)*

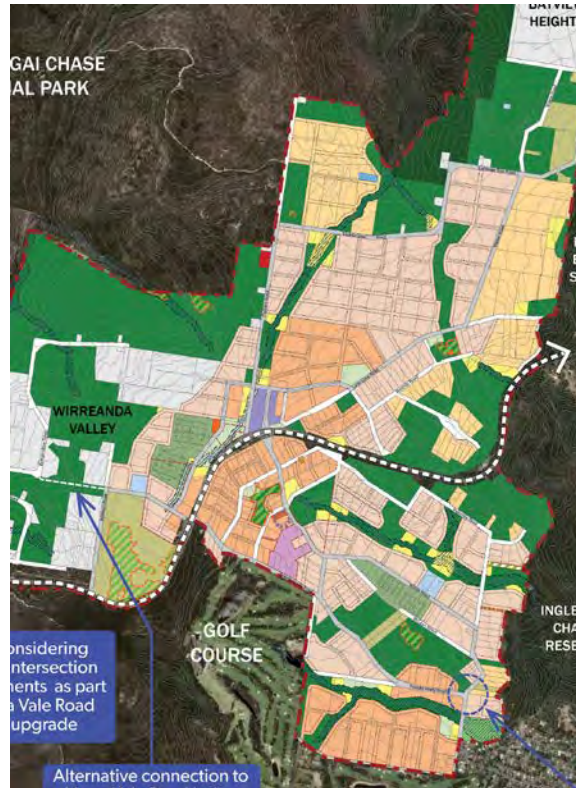
## Timeline



# Development of the plan



Draft Structure Plan



Structure Plan



Formal controls

# *Community workshops November/December 2014*

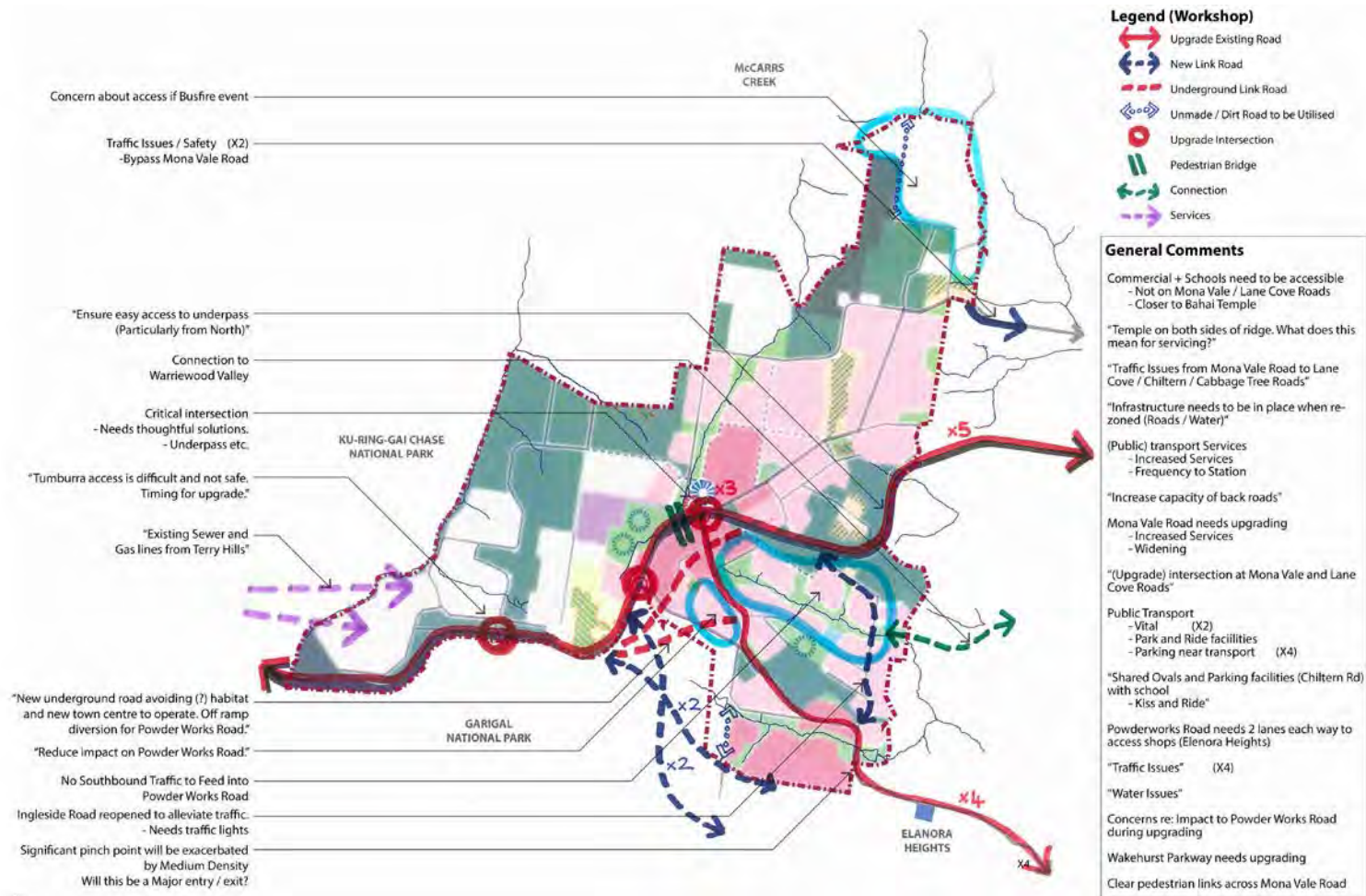
# Conservation, ecology and bushfire



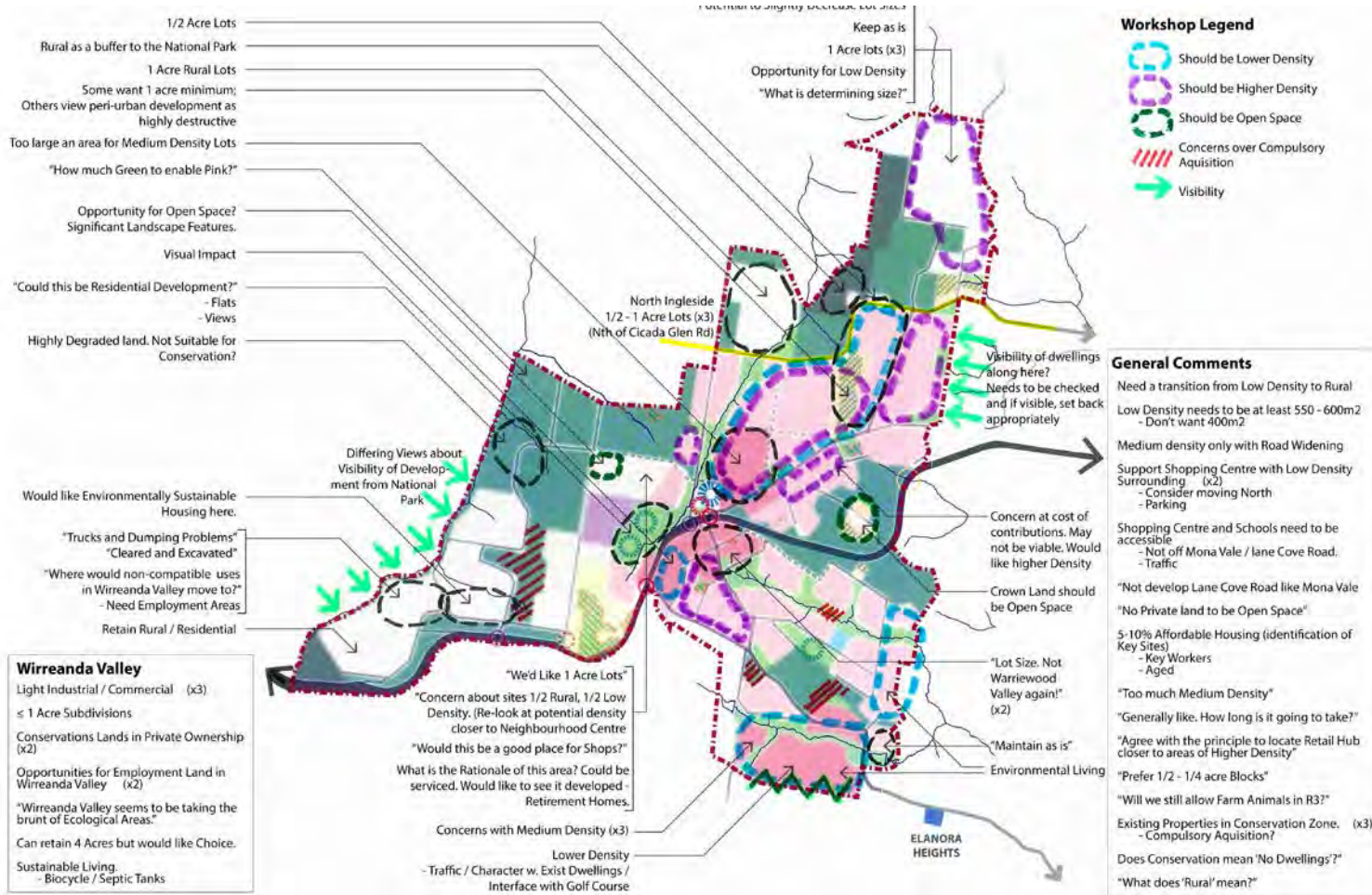
# Community



# Transport and infrastructure



# Land use and density





# Site specific concerns

