



AGENDA

TRANSPORT & TRAVEL STRATEGIC REFERENCE GROUP

Notice is hereby given that a meeting of the Transport & Travel Strategic Reference Group will be held in the Council Chambers, Manly Town Hall on

THURSDAY 6 DECEMBER 2018

Beginning at 6:00pm for the purpose of considering matters included in this agenda.

Committee Members

Cr Sarah Grattan (Chair)	
Mayor Michael Regan	
Cr Rory Amon	
Cr Kylie Ferguson	
Graeme Laughton	
Emma Tonkin	
Andrew Chivers	
Wendy Dunnet	Newport Residents Association
Keith Povah	
Richard Saunders	Manly Warringah Cycling Club
John Hawkins	Bicycle NSW
Victor Konijn	
Craig Smith	
To be confirmed	Transport for NSW
Mary Whalan	RMS
Vacant	

Council Officer Contacts

Craig Sawyer	Executive Manager Transport & Civil Infrastructure
Tamara Lukic	Governance Officer

Quorum

A majority of members including the Chair or one of the elected Councillors.

**Agenda for Transport & Travel
Strategic Reference Group Meeting
to be held on Thursday 6 December 2018
in the Council Chambers, Manly Town Hall
Commencing at 6:00pm**

1.0	APOLOGIES	4
2.0	DECLARATION OF PECUNIARY AND CONFLICTS OF INTEREST	4
3.0	CONFIRMATION OF MINUTES OF PREVIOUS MEETING	
3.1	Minutes of Transport & Travel Strategic Reference Group meeting held 20 September 2018	4
4.0	AGENDA ITEMS	5
4.1	Transport and Travel Strategic Reference Group Meeting Schedule for 2019	5
4.2	Northern Beaches Local Environmental Plan	6
4.3	Shared Mobility Policy	23
4.4	Parking Plan Update	25
4.5	Transport Strategy Update	26
4.6	Update on the Development on the Northern Beaches Bike Plan	31
4.7	Walking plan update	33
5.0	GENERAL BUSINESS	

NEXT MEETING Thursday 21 February 2019

1.0 APOLOGIES

All members are expected to attend the meetings or otherwise tender their apologies to the Chair and Governance at councilmeetings@northernbeaches.nsw.gov.au.

2.0 DECLARATION OF PECUNIARY AND CONFLICTS OF INTEREST

Members are advised of the following definitions of a "pecuniary" or "conflict" of interest for their assistance:

Section 442 of the Local Government Act, 1993 states that a "pecuniary" interest is as follows:

"(1) [Pecuniary interest] A Pecuniary interest is an interest that a person has in a matter because of a reasonable likelihood or expectation of appreciable financial gain or loss to the person or another person with whom the person is associated.

(2) [Remoteness] A person does not have a pecuniary interest in a matter if the interest is so remote or insignificant that it could not reasonably be regarded as likely to influence any decision the person might make in relation to the matter."

Members should reference the Local Government Act, 1993 for detailed provisions relating to pecuniary interests.

Council's Code of Conduct states that a "conflict of interest" exists when you could be influenced, or a reasonable person would perceive that you could be influenced by a personal interest when carrying out your public duty.

3.0 CONFIRMATION OF MINUTES OF PREVIOUS MEETING

3.1 MINUTES OF TRANSPORT & TRAVEL STRATEGIC REFERENCE GROUP MEETING HELD 20 SEPTEMBER 2018

RECOMMENDATION

That the Minutes of the Transport & Travel Strategic Reference Group meeting held 20 September 2018 be confirmed as a true and correct record of the proceedings of that meeting.

4.0 AGENDA ITEMS

ITEM 4.1	TRANSPORT AND TRAVEL STRATEGIC REFERENCE GROUP MEETING SCHEDULE FOR 2019
REPORTING OFFICER	COORDINATOR GOVERNANCE
TRIM FILE REF	2018/708052
ATTACHMENTS	NIL

EXECUTIVE SUMMARY

PURPOSE

To note the Transport and Travel Strategic Reference Group (SRG) meeting schedule for 2019.

REPORT

Section 8 of the Transport and Travel Strategic Reference Group's Terms of Reference requires the group to meet at least 4 times per year, with the possibility of two (2) extraordinary meetings which may be called by the Chair with a minimum of two (2) weeks' notice.

The 2019 proposed meeting schedule is as follows:

Meeting	Meeting Date	Location
Transport and Travel	21 February	Council Chambers, Manly
Transport and Travel	23 May	Council Chambers, Manly
Transport and Travel	22 August	Council Chambers, Manly
Transport and Travel	31 October	Council Chambers, Manly

As per the Terms of Reference, once the meeting schedule for 2019 has been confirmed it will be distributed to members and placed on Council's website.

RECOMMENDATION OF COORDINATOR GOVERNANCE

That the Transport and Travel Strategic Reference Group note the meeting schedule for 2019.

ITEM 4.2	NORTHERN BEACHES LOCAL ENVIRONMENTAL PLAN
REPORTING OFFICER	PRINCIPAL PLANNER
TRIM FILE REF	2018/729267
ATTACHMENTS	1 Northern Beaches Local Environment Plan Presentation

ISSUE

To inform the Partnership & Participation Strategic Reference Group of the project to deliver a Northern Beaches Local Environment Plan (LEP), and request future input.

REPORT

As one new large Council, it is our priority to create a single planning framework for the Northern Beaches as a whole. That means taking our four current Local Environment Plans (LEPs) and Development Control Plans (DCPs) and working with our community and other stakeholders to consolidate them.

The first step in this journey is outlined in Council's Report from the 27 November 2018. This Report was prepared for the Department of Planning and Environment and Greater Sydney Commission and includes an 'LEP Review' and 'Health Check'. It is an internal audit of how closely aligned the current Northern Beaches LEPs are to the North District Plan. It concludes that Council is well placed to deliver on actions in the North District Plan, with Council's Delivery Program including a wide range of studies and investigations required to manage the newly proclaimed Local Government Area (LGA). A range of priorities and actions are identified to inform Council's new planning framework including the preparation of a housing strategy and studies into employment, social infrastructure, transport and the environment.

Now that the LEP Review is complete, Council will commence preparing a Council-wide Local Strategic Planning Statement (Planning Statement). This new planning document will outline our vision for the future, setting priorities, actions to achieve the priorities and confirming our commitment to a sustainable future. The Planning Statement will inform the preparation of a new LEP and DCP and provide a signal to the community of where the Northern Beaches is headed over the next 20 years.

Our new Planning Statement, LEP, and DCP must be consistent with the themes and regional directions set by the Greater Sydney Commission in the North District Plan, and it must also respond to what our community told us when we developed our Community Strategic Plan.

HOUSING AND JOB TARGETS

The North District Plan requires Council to deliver a 5-year housing target of 3,400 dwellings. This target is consistent with historic growth patterns and is comparatively low when compared with targets in the remaining North District (i.e. 13%). Future housing growth that will contribute to achieving this target includes: remaining capacity in existing zoned areas such as the Medium Density zones, Town Centres (such as Dee Why) and Warriewood Valley.

Council has commenced preparation of a Northern Beaches Housing Strategy in accordance with the NSW Department of Planning and Environment Guidelines. This work will identify housing gaps and opportunities to better cater for the changing needs of the Northern Beaches population. As required under the North District Plan, the Housing Strategy will need to identify a 6-10-year housing target and capacity to contribute to the North District 20-year target. These longer term targets will take into account anticipated growth in the Frenchs Forest Planned Precinct.

Council is also preparing an Employment Study to address the North District Plan's additional jobs targets for our strategic centres by 2036. These include: Frenchs Forest – 2,700-3,700; Dee Why/Brookvale – 3,000-6,000; Mona Vale – 700-1,700; and, Manly – 1,000-1,500.

Council will undertake extensive consultation in the preparation of these studies and ensure that future targets take into consideration the availability of appropriate infrastructure whilst minimising impacts on the environment and local character.

NEXT STEPS

Council aims to engage with all Strategic Reference Groups to seek input into the vision, priorities and actions for the draft Planning Statement. Extraordinary meetings will be arranged to undertake these workshops in early 2019. Further consultation is planned in the preparation of relevant technical studies including the Housing Strategy and Employment Study.

RECOMMENDATION OF PRINCIPAL PLANNER

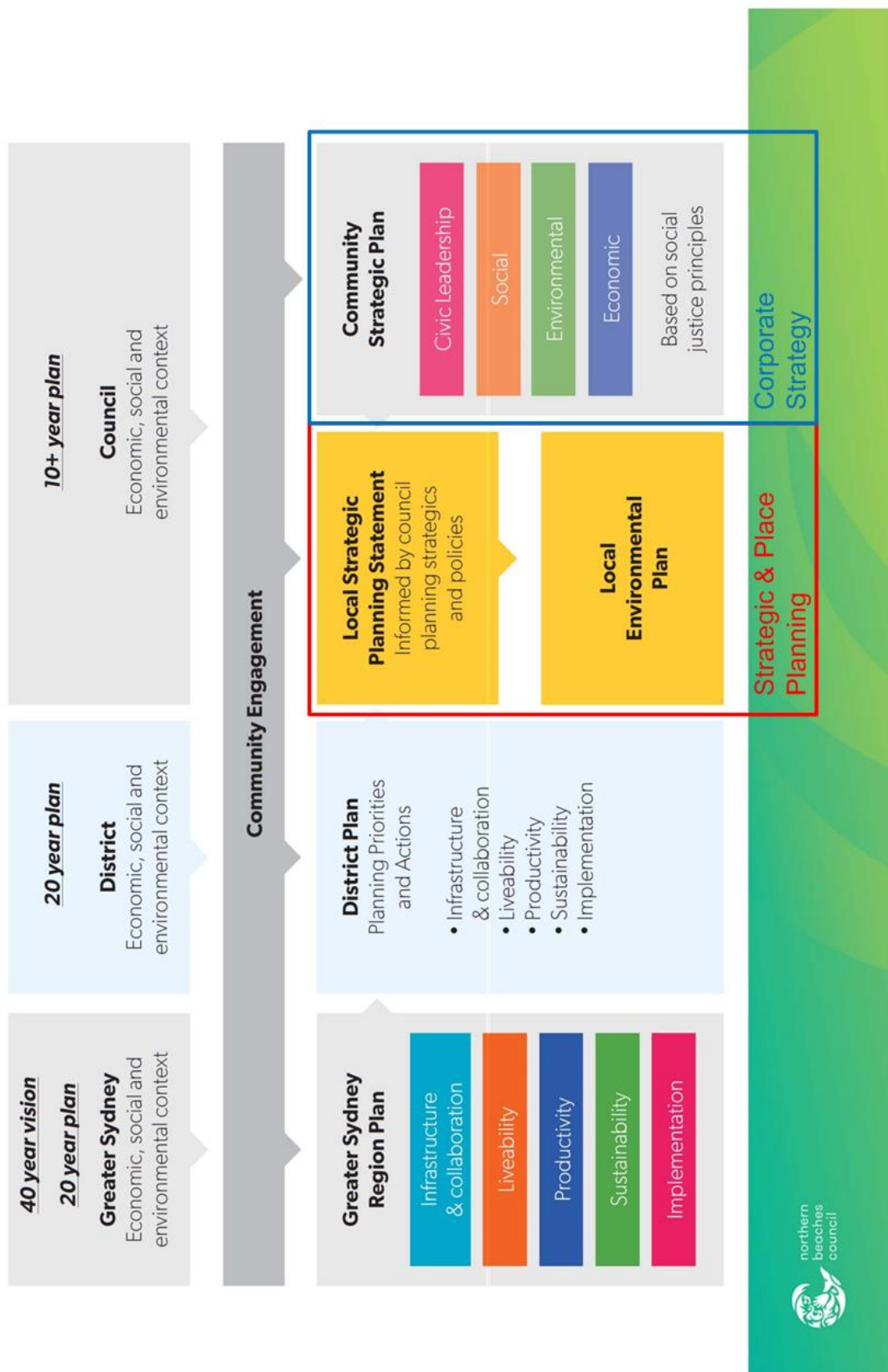
That the Partnership & Participation Strategic Reference Group:

- A. Notes Council's Report from the 27 November 2018 and attached Local Environment Plan Review and Health Check.
 - B. Commits to provide input into the vision, priorities and actions for the draft Local Environment Plans via extraordinary meetings to be scheduled early 2019.
-

Northern Beaches Local Environmental Plan



Planning Framework for Greater Sydney



Planning Framework for Greater Sydney

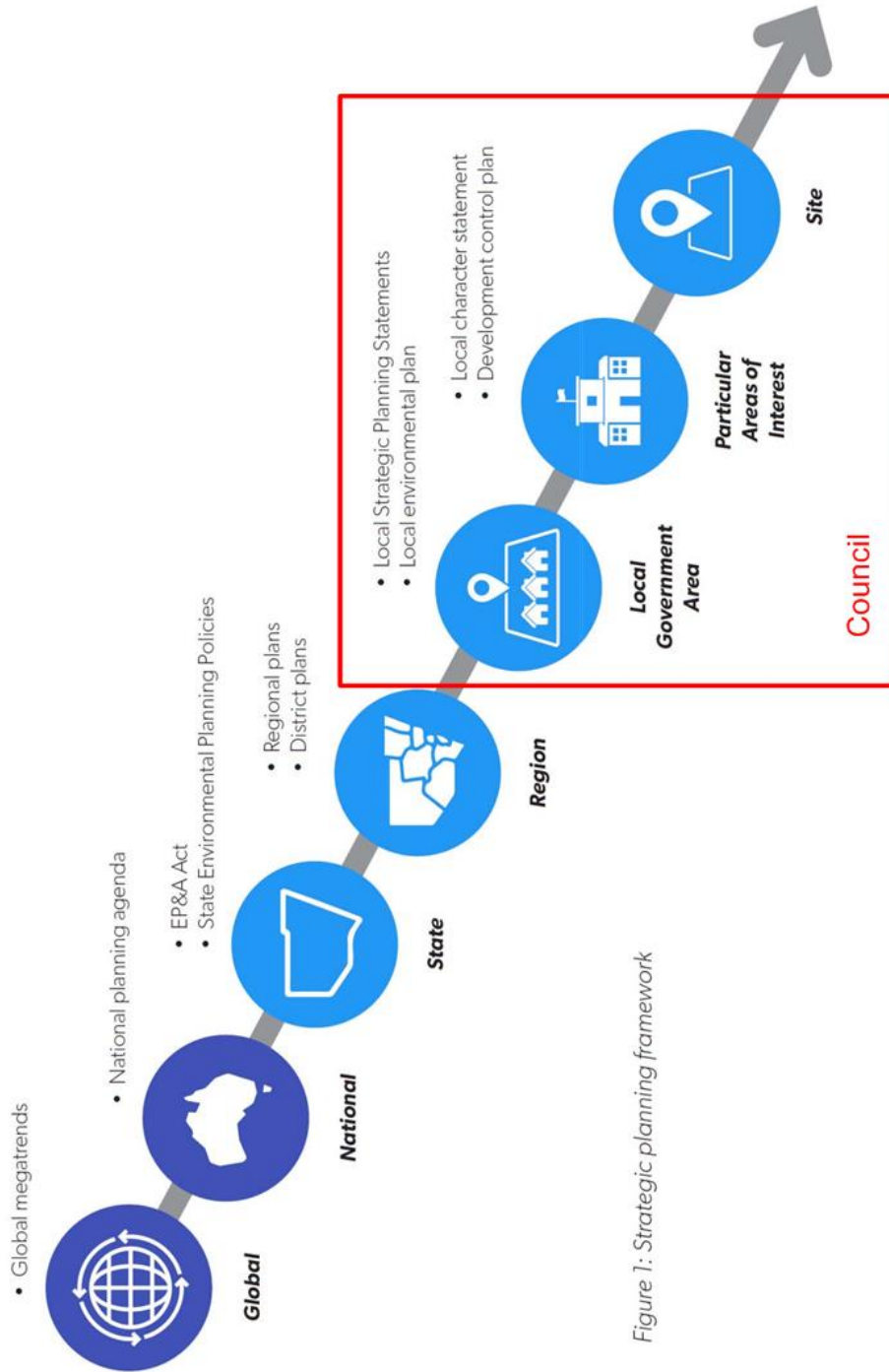
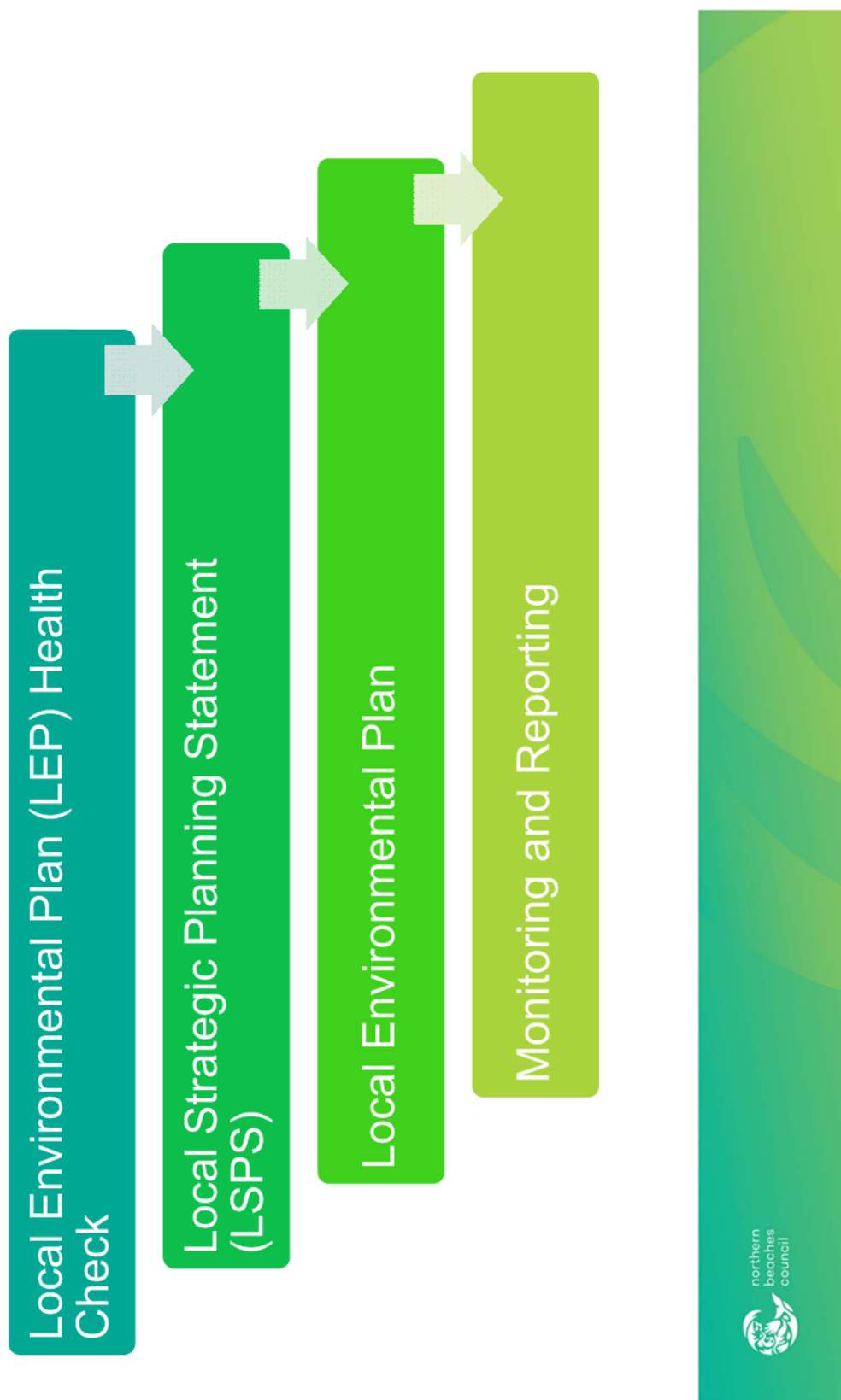
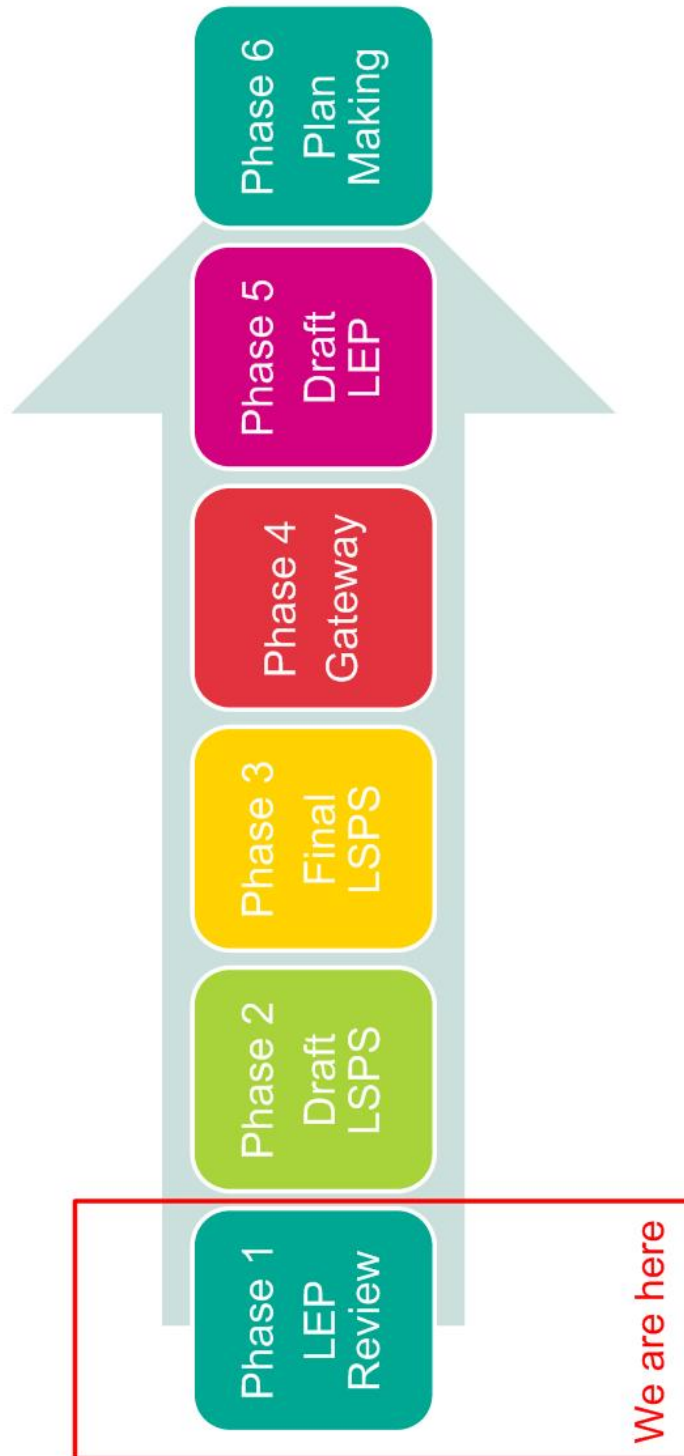


Figure 1: Strategic planning framework

District Plan Actions for Strategic and Place Planning



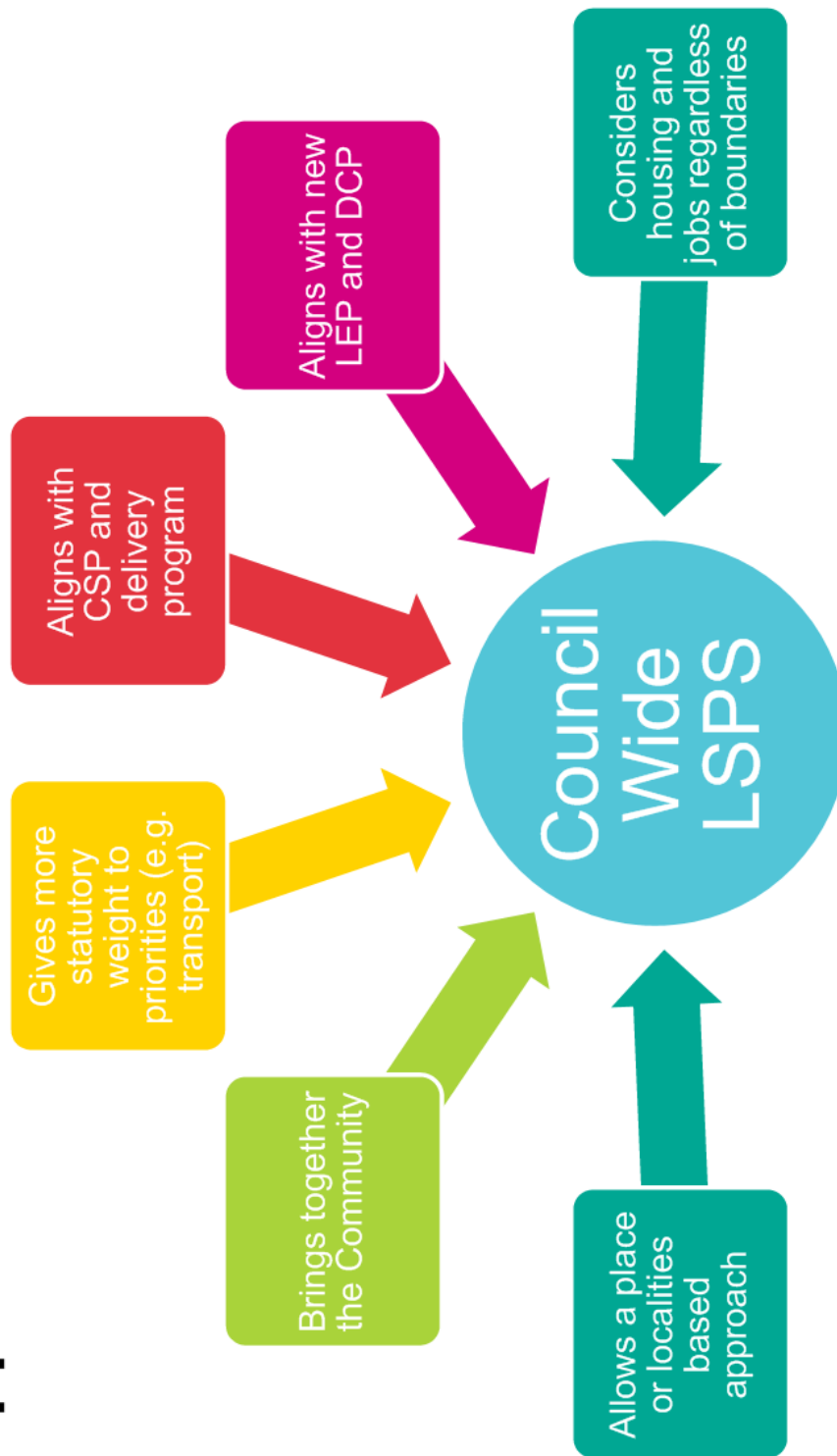
LEP Roadmap

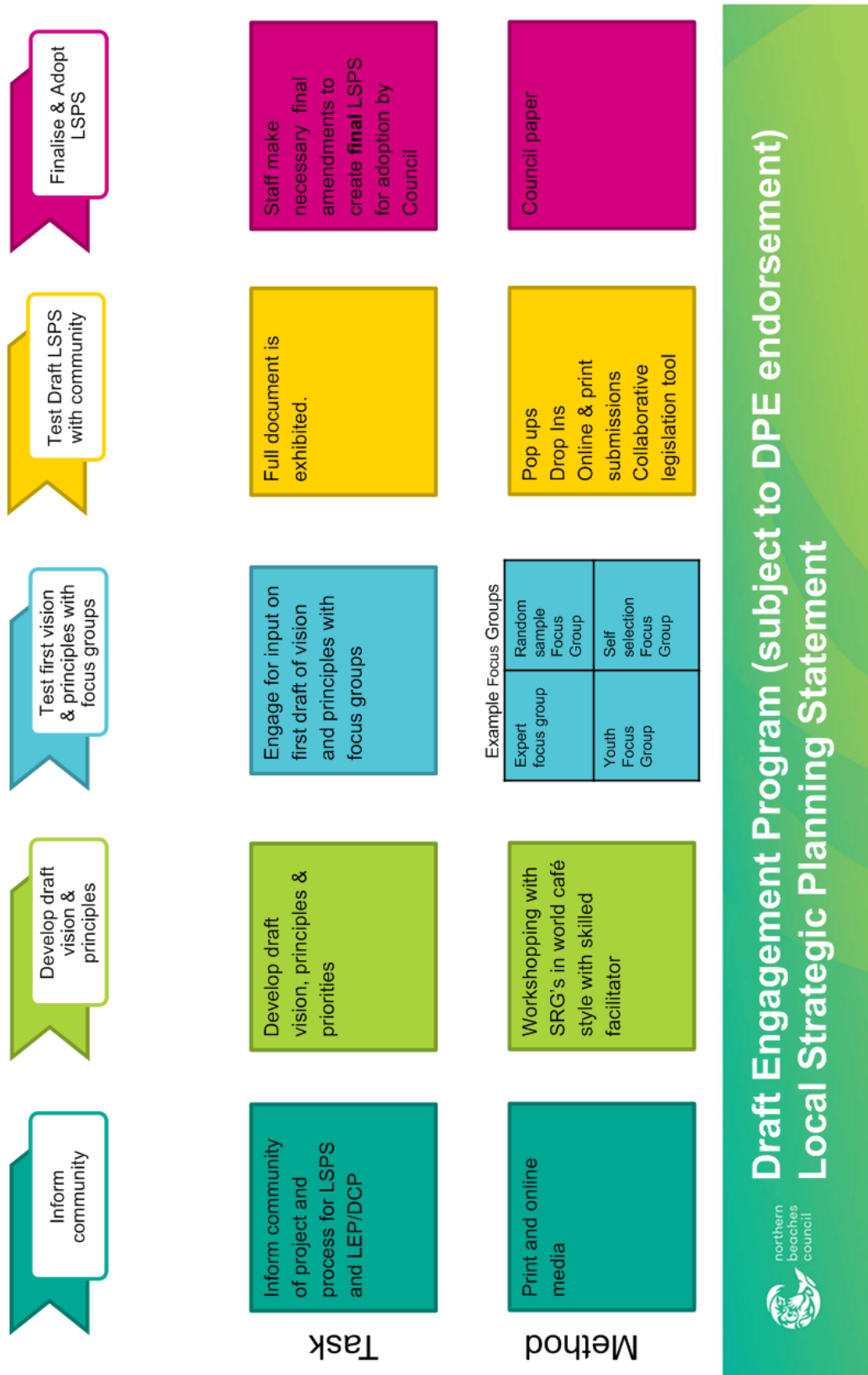


Local Strategic Planning required to inform the LSPS and LEP

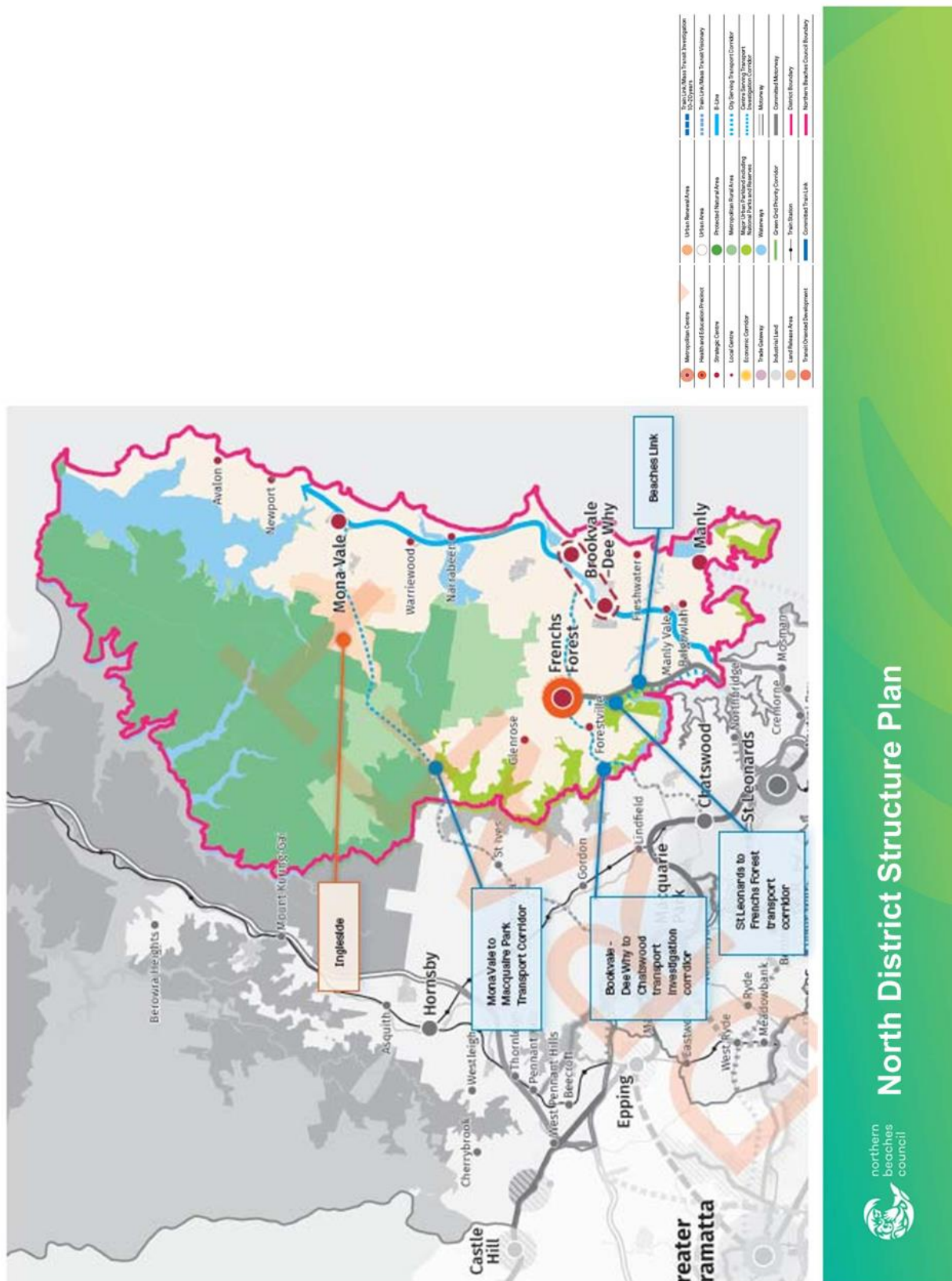
Technical Studies			Planning Controls
Stage 1	Stage 2 (As Required)	Stage 3	
<ul style="list-style-type: none"> 1A - Community Engagement Strategy 1B - Demographic Analysis 1C - Employment Study 1D - Housing Strategy 1E - Social Infrastructure Study 1F - Transport Investigations 1G - Character Study 1H - Environment Study <p>* includes recommended planning controls</p>	<ul style="list-style-type: none"> 2A - Infrastructure Investigations (Utilities incl digital) 2B - Infrastructure Investigations (Water cycle) 2C - Contributions Plans 2D - Feasibility Studies 2E - Land Use and Infrastructure Implementation Plan 	<ul style="list-style-type: none"> 3A - Heritage 3B - Public Places 3C - Built Form 3D - Sustainability 3E - Environment 3F - Transport 	

Local Strategic Planning Statement Approach





Housing Strategy

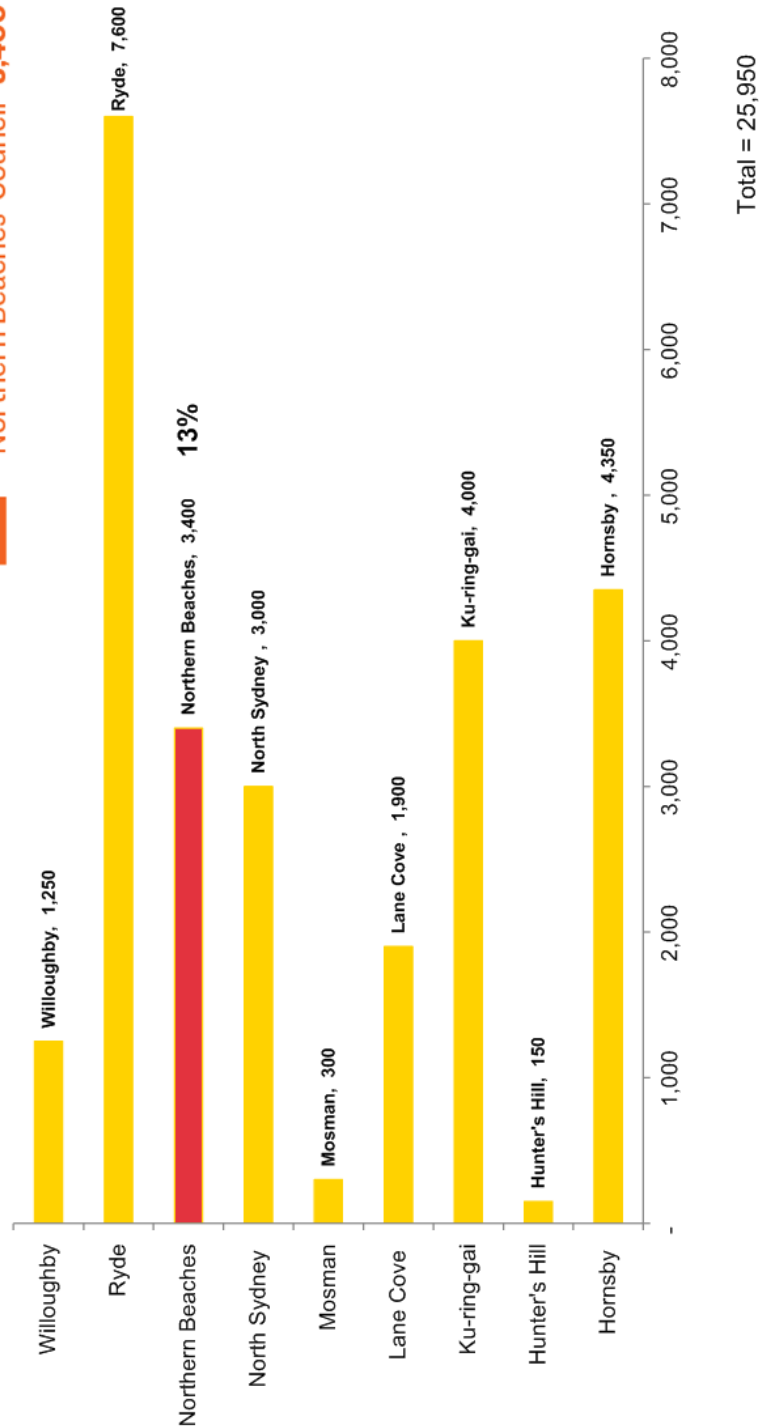


5 Year Housing Targets North District

Housing Supply Target 2016-2021



Northern Beaches Council **3,400**



Housing Strategy to address

- Delivery of 5 year housing target (3,400)
- Delivery of 6-10 year housing target
- Capacity to contribute to 20 year target (92,000)

Strategic Housing Target 2016-2036
North District 92,000

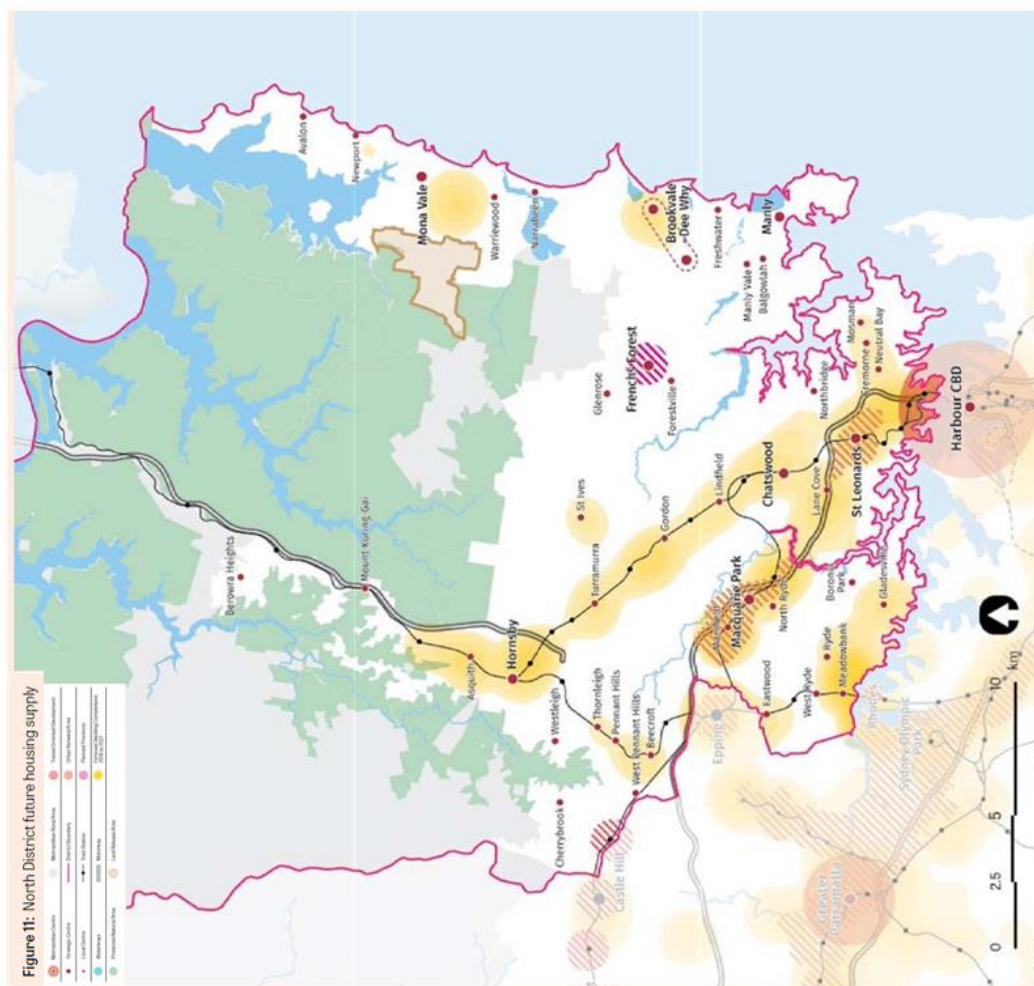


Housing Strategy to address

- ✓ Create capacity for more housing in the right locations
- ✓ Support growth areas and planned precincts
- ✓ Align with investment in regional and district infrastructure
- ✓ Support the role of centres



Housing Strategy



0-5 Year Target Existing/Likely Zoned Housing Capacity

- ✓ Frenchs Forest
- ✓ Warriewood Valley
- ✓ Ingleside
- ✓ Dee Why Town Centre
- ✓ Residential Flat Buildings
- ✓ Secondary Dwellings
- ✓ Shop Top Housing

Questions?

ITEM 4.3	SHARED MOBILITY POLICY
REPORTING OFFICER	MANAGER, TRANSPORT NETWORK
TRIM FILE REF	2018/728470
ATTACHMENTS	NIL

EXECUTIVE SUMMARY

PURPOSE

To provide an update to the Transport and Travel Strategic Reference Group on the development of the Shared Mobility Policy and the associated Guidelines for Bike Share, with other guidelines to be developed over the next few months.

REPORT

The Shared Mobility industry is an expanding part of the transport sector. The Shared Mobility Policy is designed to get ahead of the new modes of shared mobility that are starting to come to the market as well as addressing the existing issues such as business and safety impacts around the current Bike Share businesses.

The bike share industry has become an issue for the community across the higher density areas of the Northern Beaches. This has impacted on the natural amenity and pedestrian safety in some areas of the Northern Beaches, often referred to as the shopping trolley of the 21st century. Until recently the bike share industry had been unregulated and was the subject of several different business models that resulted in a range of issues across Sydney.

Northern Beaches Council recognises some positive aspects of a Shared Mobility transport option that can enhance local movement and provides another option for tourists and residents in the “last mile” concept of an integrated transport system. The draft policy has been produced to further enhance the legislation recently amended by the State Government which provides a regulatory framework to minimize the impact of this business type on the environment and the safety of pedestrians across the state.

Council seeks to engage with the community as well as targeted discussions with the business providers to allow this type of shared mobility service to be introduced on the Northern Beaches in a controlled fashion with defined timeframes and where possible minimise the need for compliance intervention to ensure an alternate transport solution is available in areas of need.

We support Shared Mobility principles to reduce congestion on our roads by reducing the use of vehicles on short trips and the use as a form of active transport and recreation. Principles relating to Shared Mobility and livable cities are:

1. Plan cities and mobility together
2. Focus on people, not cars
3. Encourage efficient use of space and assets
4. Engage stakeholders in decision making
5. Design for equitable access
6. Transition towards zero emissions
7. Seek fair user fees
8. Deliver public benefits by open data

9. Promote integration and seamless connectivity
10. Automated vehicles must be shared.

RECOMMENDATION OF MANAGER, TRANSPORT NETWORK

That the Transport and Travel Strategic Reference Group:

- A. Supports the development of shared mobility guidelines
 - B. Notes the draft policy and provides feedback to staff on the draft
 - C. Continue to promote innovation in transport development on the Northern Beaches.
-

ITEM 4.4	PARKING PLAN UPDATE
REPORTING OFFICER	MANAGER, TRANSPORT NETWORK
TRIM FILE REF	2018/728474
ATTACHMENTS	NIL

EXECUTIVE SUMMARY

PURPOSE

To receive feedback from the SRG members on Council's Draft Parking Discussion Paper.

REPORT

The next phase for the development of the suite of documents to inform transport policy and delivery on the Northern Beaches has now commenced. With the Walking Plan almost ready to go on Public Exhibition, the Bike Plan under development; it is now time to start the conversation with the community on how we provide and manage parking in to the future.

As this is one of the highest complaint generators for the Transport Network Team we have taken the discussion paper option to inform the development of the draft Parking Plan.

The Plan will cover all things parking related from on-street parking, permits, smart technology, to development related conditions and our vision for the future embracing new technology as it is commercialised.

RECOMMENDATION OF MANAGER, TRANSPORT NETWORK

That:

- A. The Transport and Travel Strategic Reference Group Members
 - a. Having received a confidential copy of the draft discussion paper for a review, provide feedback on any concerns they have with the content
 - b. Provide further comments directly to the Transport Network Team via the Transport@northernbeaches.nsw.gov.au email.
 - B. The Chair of the Transport and Travel Strategic Reference Group dedicates the next meeting of the Transport and Travel Strategic Reference Group on 21 February 2019 to be a workshop to assist the Transport Network Team to finalise the draft parking plan.
-

ITEM 4.5	TRANSPORT STRATEGY UPDATE
REPORTING OFFICER	MANAGER, TRANSPORT NETWORK
TRIM FILE REF	2018/728477
ATTACHMENTS	NIL

EXECUTIVE SUMMARY

PURPOSE

To update the SRG on the adoption of MOVE – Northern Beaches Transport Strategy by Council and for the members to receive a copy of the final document.

REPORT

MOVE – Northern Beaches Transport Strategy was taken to Council for adoption on 27 November 2018 after Council conducted a wide ranging and multi streamed engagement following on from the detailed engagement conducted during the discussion paper phase of the project.

The public exhibition period for the draft Move – Northern Beaches Transport Strategy 2038 was from 31 August 2018 till 7 October 2018. Community and stakeholder input captured during this public exhibition period has provided detail about current challenges and opportunities related to council's proposed approach to creating and sustainably managing an integrated active, public and private transport network.

Community and stakeholder input was sought through a range of online and face-to-face engagement methods, including:

- 1,350 downloads of documents related to the draft Move – Northern Beaches Transport Strategy
- 14,735 interactions with the draft Move – Northern Beaches Transport Strategy infographic animation, which includes over 14,200 views, 16 comments and 10 shares
- 8,585 interactions with the Chatswood Challenge digital video, released prior to the public exhibition period, which includes over 8,400 views, 44 comments and 68 shares
- 119 online comment forms completed through Council's 'Your Say' webpage
- 168 attendees at eight pop-up sessions at local markets, events, and Council's customer service centres and libraries
- Ten displays at Commuter Hubs, where 1,500 Transport Strategy Z Cards were handed out
- 23 written submissions were received
- Two stakeholder meetings with neighbouring councils, City of Ryde and Ku-ring-gai Council
- Five Council News electronic articles, and one printed article in the Manly Daily weekend edition
- Five posts on Council's Facebook page, which resulted in over 22,500 interactions.

Community feedback received

Key consideration in submissions	Council response
Accessible and Liveable places	
Providing integrated transport solutions to encourage walking and cycling	Council will prioritise the delivery of walking and cycling networks and end of trip facilities to support public transport and shared mobility use in new and existing areas. This will include micro-mobility technology that will be introduced in the next few years. Direction 5 in the Public Transport Theme was amended to incorporate shared mobility technology to the Strategy
Providing designated infrastructure for cyclists, separated from pedestrians	Through the development of the Northern Beaches Bike Plan Council will investigate separated cycle networks in new developments such as Frenchs Forest and in locations where the opportunity to provide enhancements are possible. No Change to the Strategy required
Providing off-road infrastructure to make walking and cycling both a safe and pleasant experience for users.	Council will develop the Northern Beaches Walking Plan and Bike Plan. Council will also enhance the experience with wayfinding signage, user education information and user friendly apps to allow better network usage. No Change to the Strategy required
Active Travel	
Providing end of trip facilities at transport hubs, particularly near ferry terminals	Council will increase the number of end of trip facilities to encourage cycling and other active travel options at transport hubs and key destinations. In new developments the Development control could provide direction in what type and size of facilities are required. No Change to the Strategy required.
Increasing safety by separating cyclists and pedestrians	Through the development of the Northern Beaches Bike Plan Council will investigate separated cycle networks. No Change to the Strategy required.
Connecting missing links	Through the Northern Beaches Walking Plan and Bike Plan Council will plan to connect missing connections in the walking and cycling network. No Change to the Strategy required.
Providing safe and accessible active transport infrastructure for the elderly population, as well as people using mobility devices such as wheelchairs and walking frames	Council will continue to deliver a footpath upgrade program and new footpath program to support older members of our community. Other enhancement will include the provision of rest points, seats, and handrails in the steeper areas. No Change to the Strategy required.
Enhancing options for people pushing prams and for children walking and cycling to school.	Council will develop an active to school program to encourage behaviour change and model shift for the journey to and from school. Direction 5 was re-worded to 'Develop travel change initiatives to encourage active travel and shared mobility use.
ore car share	As a result of feedback Council this is part of the

Key consideration in submissions	Council response
	draft shared mobility policy to be endorsed by Council to go on Public Exhibition in 2019.
Alternate means of mobility – electric scooters etc. more suitable for all users	As a result of feedback Council has added an additional direction to the Public Transport Theme calling out the need for incorporating shared mobility technology to the Strategy
Public Transport	
Reliability	Council will develop a Public Transport Plan to seek to ensure that TfNSW delivers a reliable, frequent and affordable public transport system for the Northern Beaches and which explores innovation in the transport network, such as micro-mobility and shared mobility. This could include cross regional services to provide the connections that are currently missing with the current radial services. Strategy amended: Direction 5 was re-worded to 'Integrate on-demand and shared mobility services into the wider public transport network'. Another point was included in the section 'What this will look like in 2038' to include 'shared mobility services are integrated within the network'.
Availability	
Frequency	
Affordability	
Connection to the Northern Beaches Hospital between Mona Vale and	Council has noted the community feedback and added a new route for consideration to the Transport Network map on page 6 of the Strategy between Mona Vale and Frenchs Forest with a continuation towards Roseville on Warringah Road to either Chatswood or the City as a Cross regional route.
Rail links instead of additional roads.	Council noted that a number of responses indicated that the road tunnel should be considered as a rail option instead. It is considered that the implementation of a rail line would require a significant density increase to fund this option into the future, meaning likely a significant increase in the current population on the Northern Beaches. It is not considered that this is supported by the Northern Beaches community. On this basis it is not recommended rail is a priority for the Northern Beaches in the medium term.
Support for an East-West Connection along Warringah Road from Dee Why to Chatswood. Needs to be delivered now not in 2020 as stated in the Strategy	Council is aware of the community support and need for this service now that the Northern Beaches Hospital has opened. It is considered that due to delays in the delivery of the road connectivity works at Frenchs Forest and the lead time required to procure and construct the necessary, the timeline provided in the Strategy to deliver a fully operational Bus Rapid Transit service is realistic guide of the service commencing. No change required to the Strategy.

Key consideration in submissions	Council response
Efficient Road Network	
Potential opportunities for the Beaches Link Tunnel to be a dedicated public transport tunnel	Council noted that a number of responses indicated that the road tunnel should be considered as a rail option instead. It is considered that the implementation of a rail line would require a significant density increase to fund this option into the future, meaning likely a significant increase in the current population on the Northern Beaches. It is not considered that this is supported by the Northern Beaches community. On this basis it is not recommended rail is a priority for the Northern Beaches in the medium term.
Availability of clear lanes on a 24/7 basis	Clearways are implemented on the main road network through the Roads and Maritime Services and Council will work closely with them ensure any proposed clearways considered are in the best interests of the community and an efficient road network corridor is achieved for the movement of people and freight when needed most.
Availability of dedicated lanes for public transport on specific hours of the day to efficiently use available infrastructure.	Council will further explore public transport networks and identify routes for dedicated public transport lanes through the development of the Northern Beaches Transport Plan. No Change to the Strategy required.
Smart Parking Management	
Parking should be carefully managed to provide both residents and visitors with appropriate options	Council is developing a Northern Beaches Parking Plan to provide an innovative approach to parking management across the whole of the Northern Beaches. No Change to the Strategy required.
Park and Ride facilities were highlighted as a measure that could encourage public transport use for people who do not have feeder buses or train stations near their residence	Increasing the parking supply is not always an option so Council needs to work with the community to change mode of travel to public transport hubs, such as on-demand and ride-hail transport and active travel. Council has accelerated the delivery of the overall shared mobility policy, which includes Car Share and on demand transport option in response to the park and ride comments including the additional direction on Shared Mobility integration.
Analysing and addressing parking options for shared use cars was important to increase mobility options for people in the Northern Beaches	Council is working to develop car share guidelines so that we can continue to support the existing car share schemes in operation and to facilitate expansions of the scheme to other areas. In response to community feedback a note has been added to the vision for 2038 around re-purposing car parks for shared mobility and autonomous vehicle hubs.

Key consideration in submissions	Council response
Motorcycle and scooter parking options are needed as people who use these vehicles would appreciate the opportunity to park in areas that cater specifically for this size vehicle.	Through the development of the Northern Beaches Parking Plan Council will continue to support and provide for dedicated motorcycle and scooter parking in areas of demand. Re-worded Direction 5 to provide on-street and off-street parking for shared mobility providers.

RECOMMENDATION OF MANAGER, TRANSPORT NETWORK

That the members of the Transport and Travel Strategic Reference Group:

- A. Note the outcome of the Strategy development process that they have been an integral part of in setting the Vision and Future Direction for Transport on the Northern Beaches.
 - B. Receive a copy of the Final Strategy from the Council.
-

ITEM 4.6	UPDATE ON THE DEVELOPMENT ON THE NORTHERN BEACHES BIKE PLAN
REPORTING OFFICER	MANAGER, TRANSPORT NETWORK
TRIM FILE REF	2018/729298
ATTACHMENTS	NIL

EXECUTIVE SUMMARY

PURPOSE

The purpose of this report is to advise the Strategic Reference Group on the development of the Northern Beaches Bike Plan.

BACKGROUND

Move - Northern Beaches Council Transport Strategy includes a key objective to expand our cycling network and improve connectivity and safety to make cycling an attractive alternative to motor vehicle use.

The Northern Beaches Bike Plan aims to outline key actions that will enable Council to achieve the Transport Strategy objective of increasing cycling for transport.

Cycling on the Northern Beaches is a popular activity. The National Cycling Participation Survey states that 40.3% of Northern Beaches residents rode a bicycle in the past year, compared to the 25.4% average across Sydney. Most of these cycling trips were for recreation. This statistic provides a good basis to suggest that more of our community could ride a bicycle for transport if the conditions were suitable.

The Bike Plan will propose routes that will help Council achieve a safe (off road) cycling network for our community.

The Bike Plan will propose actions that will create a safer cycling environment and help encourage cycling as a form of transport.

The Bike Plan will acknowledge the popularity of road cycling within our community and seek to enhance safety on these popular routes.

SUMMARY

Provide a "Safe Cycling Network" to cater for transport options within our community.

Acknowledge the popularity of road cycling and establish a "Road Cycling Network" where on road cycling safety can be prioritised.

Aim to provide a higher level of cycling infrastructure. Council should aim to provide infrastructure that is comparable with the latest trends within Sydney (Examples within North Sydney, Randwick, Inner West, City of Sydney).

The Bike Plan Provide a Network Hierarchy within our Safe Cycling Network (Tier 1, 2, 3) that corresponds to TNSW Principal Bicycle Network.

Tier 1 & 2 routes to have higher quality infrastructure (including road crossings).

Build on the cycling popularity of Manly. Provide, extend and replicate.

Prioritise key routes in areas that will provide most benefit.

Examples of key projects/routes to consider as high priority for "Safe Cycling Network":

- Dee Why/ Brookvale to Frenchs Forest to Roseville Bridge (Chatswood)
- Manly to Freshwater
- Freshwater to Dee Why
- Ocean St Narrabeen
- Kenneth Road, Fairlight (Upgrade and Safety Audit)
- Pittwater Road, North Manly (Safer crossings)
- Pittwater Road, Collaroy, Narrabeen (Safer crossings)
- Dee Why to Collaroy
- Newport West to Newport Beach
- Tasman Road, Avalon Beach
- Allambie Road, Allambie Heights
- Forestville to Killarney Heights
- Manly Bicycle Parking Plan

RECOMMENDATION OF MANAGER, TRANSPORT NETWORK

That the Transport and Travel Strategic Reference Group note that the development of the Bike plan has commenced and a draft will be presented to the February 2019 meeting of the group.

ITEM 4.7	WALKING PLAN UPDATE
REPORTING OFFICER	MANAGER, TRANSPORT NETWORK
TRIM FILE REF	2018/736749
ATTACHMENTS	NIL

EXECUTIVE SUMMARY

PURPOSE

Provide a detailed update to the Transport and Travel Strategic Reference Group on the Draft Walking Plan, actions, and the footpath priority tool used to assess the provision new footpaths across the LGA.

SUMMARY

New footpaths are one of the most requested assets from our local residents, and therefore it's important we work with you, our community, to help us plan our future footpath program and establish our walking goals and actions.

Currently we are working from the adopted footpath and Pedestrian Mobility and Access Plans (PAMPs) developed by the former Councils to inform where we build new footpaths.

The Northern Beaches Walking Plan will integrate these former plans into one document and will provide a priority footpath schedule to lead our future footpath program.

Ultimately we seek to provide a connected footpath network which supports people walking as a preferred mode of travel, which will encourage walking as a form of transport. This brings far reaching benefits of reduced vehicle use and traffic congestion, healthy lifestyles and socially interactive and vibrant places for our community.

RECOMMENDATION OF MANAGER, TRANSPORT NETWORK

That the Transport and Travel Strategic Reference Group note:

- A. The draft Walking Plan will be presented to Council to be endorsed to go on public exhibition at the December Meeting.
 - B. The draft footpath priority schedule.
 - C. Provide comment on the draft as part of the engagement process prior to the adoption by Council in early 2019.
-