

# NOTES

## **NATURAL ENVIRONMENT STRATEGIC REFERENCE GROUP MEETING**

held in the Flannel Flower Room, Civic Centre, Dee Why on

**THURSDAY 9 FEBRUARY 2017**

**Notes of the Natural Environment Strategic Reference Group Meeting  
held on Thursday 9 February 2017  
in the Flannel Flower Room, Civic Centre, Dee Why  
Commencing at 5:00pm**

**ATTENDANCE:**

**To Committee Members**

Alex McTaggart (Chair)	Social Local Representative Committee
Wayne Gobert	Social Local Representative Committee
Narelle Berry	Resident – Manly Ward
Phillip Colman	Resident – Narrabeen Ward
Roberta Conroy	Bayview Church Point Residents Association
Jo Cooper	North Steyne Surf Lifesaving Club
Rebecca Eddington	Resident – Curl Curl Ward
Jacqueline French	Manly Community Forum
Paul Hackney	Resident – Frenchs Forest Ward
Tom Hazell	Resident – Curl Curl Ward
Edwina Laginestra	WIRES Northern Beaches
Whitney-May Lever	Resident – Frenchs Forest Ward
Marita Macrae	Pittwater Natural Heritage Association
Jacqueline Marlow	Friends of Narrabeen Lagoon Catchment
Yvonne Pflieger	Resident – Curl Curl Ward
Kathryn Ridge	Resident – Manly Ward
Merinda Rose	Palm Beach & Whale Beach Association
David Thomas	ECO Divers

**Council Officer Contacts**

Louise Hardy	Research Officer
Todd Dickinson	Executive Manager Natural Environment & Climate Change
Melissa Lee	Governance Manager
Anne-Maree Newbury	Principal Officer Strategic Planning

**Quorum**

Majority of members (excluding vacant positions)

**NOTE:** *Alex McTaggart Chairperson of the Natural Environment Strategic Reference Group (SRG) welcomed the members to the meeting and gave an Acknowledgement of Country*

## **1.0 APOLOGIES**

### **DISCUSSION**

That apologies from Rebecca Eddington (has advised of her resignation), Kathryn Ridge, Wayne Gobert, Jo Cooper, Yvonne Pfeiger, Sue Matthews (represented by Jacqueline French) and David Thomas be noted.

## **2.0 DECLARATION OF PECUNIARY AND CONFLICTS OF INTEREST**

Nil

## **3.0 CONFIRMATION OF MINUTES OF PREVIOUS MEETINGS**

### **3.1 MINUTES OF NATURAL ENVIRONMENT STRATEGIC REFERENCE GROUP HELD 27 OCTOBER 2016**

#### **DECISION**

That the Minutes of the Natural Environment Strategic Reference Group held 27 October 2016, copies of which were previously circulated to all Members, are hereby confirmed as a true and correct record of the proceedings of that meeting.

## **4.0 COUNCIL UPDATES**

### **4.1 COMMUNITY STRATEGIC PLAN DEVELOPMENT WORKSHOP - 40 MINS**

#### **DISCUSSION**

L Hardy gave a presentation to the group advising that the Stage 1 report (Issues Paper) went to Council on 13 December 2016, and the organisation is now moving into Stage 2, comprising of a discussion paper, due to go out in March 2017. The team is now seeking input from the SRGs (around goals and aspirations). Stage 3 draft CSP is due in August 2017, with the final CSP to be presented to Council in September 2017, for the incoming council to adopt.

Stage 1 Outcomes:

Draft vision statement (for strategic plan)

Based on community feedback, the priority areas are:

- Environment (46% by theme)
- Social (20%)
- Economic (34%)

Stage 2:

L Hardy advised of the purpose and objectives of the discussion paper and workshop.

Themes and community aspirations were outlined, and SRG members were invited to provide

feedback on, which themes/ aspirations people were supportive/ not supportive of (why) / and what's missing?

The group had several discussions around how strategic goals/strategies interact with, and influence the operations of Council. T Dickinson advised that Council's budgets are largely fixed by having to provide the regular services of Council (i.e. business as usual). The intention of the strategic work in the CSP is to provide direction so that Council can adjust its resourcing in its Operational Plans accordingly.

A McTaggart requested the following comment / discussion be noted:

- Within the Natural Environment SRG, we need a mechanism for the future to be able to bring significant environmental issues such as impending destruction of bushland due to redevelopment to Senior Management within the organisation as a matter of urgency as they arise. T Dickinson advised he would look into the most appropriate mechanism for this.

Following the workshop, M Lee to receive hard copy notes (where taken), scan and return to members as required.

*NOTE: The presentation on this item is appended at Attachment 1.*

## **DECISION**

That the Natural Environment Strategic Reference Group participate in a workshop assist in the development of the Community Strategic Plan.

That feedback from the workshop be used to refine Stage 2 discussions.

## **4.2 GREATER SYDNEY COMMISSION DRAFT DISTRICT PLAN - 20 MINS**

### **DISCUSSION**

AM Newbury gave a presentation to the group, advising that the District Plan and the amended Metropolitan Plan is out on exhibition at this time on the Greater Commission Sydney website.

She outlined that the District Plan divides Sydney into 6 districts (Northern Beaches Council resides in North District, comprising of 9 Local Government areas) containing a high percentage of National Parks and other open space reserves. North District is growing (9,800 people each year), with an ageing population in particular. We need more housing and diversification in housing, that supports an ageing population. We also have large growth in single person households, which requires greater housing choice, and how we cater for this shift. The District contains 20% of all jobs in greater Sydney.

The draft Plan on exhibition until late March 2017 and includes summary document, full document, background papers (available on dashboard on Greater Sydney website), maps and amendments to the Metropolitan Plan.

What does the plan mean for local government? It will inform the draft LEPs, inform planning proposals, guide strategic land use, transport and infrastructure planning and inform infrastructure planning and investment.

There are 5 sections to the Plan:

- (S1) Introduction / framework, how it relates to metropolitan plan (multiple CBDs in Sydney)
- (S2) Vision, how we achieve it
- Strategies and specific actions (S3-5)

Key priorities:

- Grow jobs in centres and in urban service land
- Use the Northern Beaches Hospital as a catalyst for a new urban centre at Frenchs Forest
- Leverage investment in transport infrastructure (the B line)
- Create affordable and diverse housing
- Manage natural hazards
- Protect heritage character and liveability of the area
- Plan for demographic change
- Protect the natural landscape

What targets have been set?

- Job targets
- Housing targets

Lastly, AM Newbury advised that the group could get involved in this process by lodging a submission.

There were a number of questions raised as follows:

- How do the Plans interact with State Acts and legislation?
- How much power does the Greater Sydney commission actually have?
- How do community members get the opportunity to object to something?
- Who is on the panel for North District (that individuals can make representations to)?

**Action:**

1. AM Newbury advised she would source this information and circulate it to the group

*NOTE: The presentation on this item is appended at Attachment 2.*

**ACTION**

A McTaggart requested that a copy of the plans put into each of the libraries. AM Newbury advised that the documents are all on-line, but that she would look into whether they could go into the libraries.

**DECISION**

That the Natural Environment Strategic Reference Group note the information presented.

**4.3 DRAFT STRUCTURE PLAN FOR INGLESIDE - 10 MINS**

**DISCUSSION**

AM Newbury gave a presentation to the group, advising of background, plan highlights, the environmental emphasis and where to from here.

Background:

- Identified as early as 1960's as a key development site

- Council resolution in 2013 to plan for the release area
- Included in Metro Plan for Sydney in District Plan
- Listed as a priority growth area in the State Environment Planning Policy (2006)
- Vision – connected, liveable sustainable community that embraces and respects its landscape settings

AM Newbury discussed the structure plan, what the area will look like and discussed elements including environmental conservation, Aboriginal heritage, housing (types), playing fields, schools, etc.

Plan highlights:

- 700 hectares
- 40% development
- 30% conservation
- 30% remains in its current state
- 3400 new dwellings
- Affordable housing (10%)
- 6 sportsfields
- 1 primary school
- 2 community centres
- Neighbourhood centre with local shops
- Diverse mix of housing product

Strong environmental emphasis – green star building rating being sought which will aim for:

- 4 star rating
- Water target
- Beyond basix sustainability targets
- Bio-certification to reduce / offset net environmental impact
- Fauna connectivity

Where to from here?

- Currently on exhibition
- Drop in sessions – Feb 2017 (11, 16, 22)
- Post exhibition
  - Exhibition of zoning package (April 2017)
  - Adoption of S94 plan by council (before land is rezoned)
  - Adopted S94 to IPART
  - Land is formally rezoned (mid-late 2017)

J Marlow advised the group that there needed to be funding of corridors over road (wildlife), especially with the plan for widening of road (with no dedicated funds), and flagged her disappointment with some aspects of the planning done to date..

*NOTE: The presentation on this item is appended at Attachment 3.*

## **ACTION**

The group asked if J Marlow could email the group about some of the points of concern that she raised within the discussion so they can include this information in their submissions?

J Marlow to email M Lee with the details who will forward this information on to group members.

## **DECISION**

That the Natural Environment Strategic Reference Group note the information presented.

### **4.4 CONNECTING THE NORTHERN BEACHES - 10 MINS**

## **DISCUSSION**

L Hardy advised the group that a discussion paper was circulated to members prior to the meeting.

By way of background, she advised the group that Council was given funding through the Stronger Communities Fund, and council officers looked at how best to spend the funds to make a much more connected Northern Beaches. The decision (ratified by Council at an extraordinary meeting on 16 December 2016) was to create an all weather, off / on road bike and walking trail from Palm Beach to Manly.

## **DECISION**

That the Natural Environment Strategic Reference Group note the information presented.

### **5.0 STRATEGIC DISCUSSION TOPICS**

Nil

### **6.0 STRATEGIC WORKSHOPS**

#### **6.1 NATURAL ENVIRONMENT SRG DIRECTIONS PAPER - 40 MINS**

## **DISCUSSION**

Due to time constraints, this item was held over until the next meeting. T Dickinson advised, that he wants the group collectively over the next few months to come up with a directions paper that can guide the incoming Council on strategic environmental matters.

There was a question raised as to whether the group could meet between now and the next meeting? T Dickinson said that they could meet informally.

## **DECISION**

That this item be deferred to the next meeting where the Natural Environment Strategic Reference Group will review their aspirations list in preparation to commence work on the Directions Paper.

### **7.0 GENERAL BUSINESS**

Nil

## SUMMARY OF ACTIONS

ACTION	RESPONSIBLE OFFICER
A McTaggart requested that a copy of the Greater Sydney Commission draft District Plan be placed in all council libraries	Principal Officer Strategic Planning
AM Newbury advised she would source information around who is on the –North District Planning Panel and circulate it to the group.	Principal Officer Strategic Planning
For those that handwrote separate notes at Item 4.1, M Lee to receive hard copy notes, scan and return to members if required.	Governance Manager
J Marlow to email the group about some of the points of concern that she raised within the discussion so they can include this information in their submissions? J Marlow to email M Lee with the details who will forward this information on to group members.	Governance Manager

*The meeting concluded at 7.15pm*

This is the final page of the Notes comprising 8 pages  
numbered 1 to 8 of the Natural Environment Strategic Reference Group  
meeting held on Thursday 9 February 2017 and confirmed on Thursday 13 April 2017





## CSP Overview



## Stage 1 Outcomes

- ✓ **Strong vision statement** (draft) supported and informed by clear community aspirations
- ✓ **Well defined priorities** providing a solid foundation for the Discussion Paper
- ✓ **Good community participation:** more than 1,000 community members, LRCs and SRGs provided input
- ✓ **Overall support for the new Council** expressed during the engagement

NORTHERN BEACHES  
COUNCIL

<sup>3</sup>  
northernbeaches.nsw.gov.au

*Northern Beaches:*

*a safe, inclusive and  
connected community that  
values the natural and built  
environment*

## Community Feedback...

Priority areas	Comments (N=2467)	By Theme
<ul style="list-style-type: none"> <li>Environment Management &amp; Protection (incl. climate change, natural hazards &amp; biodiversity)</li> </ul>	16%	Environment or 46%
<ul style="list-style-type: none"> <li>Clean Environment</li> </ul>	4%	
<ul style="list-style-type: none"> <li>Planning for Future communities</li> <li>Built Environment interactions</li> </ul>	26%	
<ul style="list-style-type: none"> <li>Open space &amp; Diverse recreation</li> <li>Arts/culture/creative activities &amp; spaces</li> <li>Community, health, well being &amp; safety</li> </ul>	7% 6% 7%	Social or 20%
<ul style="list-style-type: none"> <li>Transport, Infrastructure &amp; Connectivity</li> </ul>	20%	Economic or 34%
<ul style="list-style-type: none"> <li>Economic Development (diversity, innovation &amp; growth, local employment &amp; education, tourism and visitors)</li> </ul>	14%	

NORTHERN BEACHES  
COUNCIL

<sup>5</sup>  
northernbeaches.nsw.gov.au

## Discussion Paper: Purpose and objectives

*The purpose of the Discussion Paper is to inform discussions with the community on how to work toward their vision*

- To **reflect back** what we have heard is important to the community (confirm vision and aspirations)
- To identify **goals and strategies**
- To facilitate **open and constructive dialogue** on 'the big picture' and on balances
- To consider **interrelationships between issues**
- To consider the **policy context and trends**



NORTHERN BEACHES  
COUNCIL

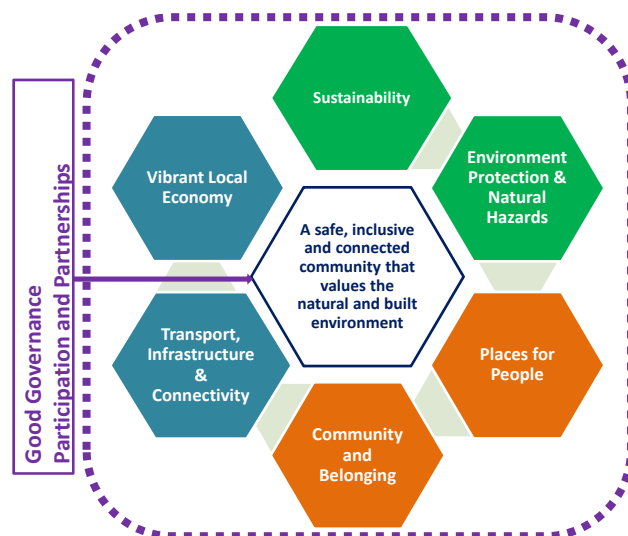
<sup>6</sup>  
northernbeaches.nsw.gov.au

Community Priorities from consultation	Discussion Paper: Themes
<ul style="list-style-type: none"> <li>Environment Management &amp; Protection (incl. natural hazards, climate change, bushland &amp; biodiversity)</li> </ul>	1. Environmental sustainability
<ul style="list-style-type: none"> <li>Clean Environment</li> </ul>	2. Natural Values
<ul style="list-style-type: none"> <li>Population growth, development &amp; infrastructure</li> <li>Housing Affordability</li> </ul>	3. Places for People
<ul style="list-style-type: none"> <li>Open space &amp; Diverse recreation</li> <li>Arts/culture/creative activities &amp; spaces</li> <li>Community Connectedness</li> <li>Health, Well Being, Safety</li> </ul>	4. Community and Belonging
<ul style="list-style-type: none"> <li>Transport &amp; connectivity</li> <li>Traffic, roads and congestion</li> </ul>	5. Integrated Transport Planning
<ul style="list-style-type: none"> <li>Economic Development</li> </ul>	6. Vibrant Local Economy
<ul style="list-style-type: none"> <li>Leadership</li> <li>Transparency</li> <li>Accountability</li> </ul>	7. Good Governance
<ul style="list-style-type: none"> <li>Local area representation</li> </ul>	8. Participation and Partnerships

COUNCIL

northernbeaches.nsw.gov.au

## Discussion Paper: structure with QBL

NORTHERN BEACHES  
COUNCIL

northernbeaches.nsw.gov.au

## Outcomes (themes) and community aspirations

### Sustainability

*Growth is sustainable and well balanced*

### Environmental Protection & Natural Hazards

*We are inspired by bush, beaches & waterways*

*Development is balanced with our lifestyle and environment*

### Places for People

*Our streets & neighbourhoods are safe, clean & family friendly*

*We celebrate local villages and communities*

*Our communities and businesses are connected and inclusive*

### Community and Belonging

*We have vibrant spaces with diverse arts & cultural experiences*

### Transport, Infrastructure and Connectivity

*Transport is seamless and integrated*

### Vibrant Local Economy

*Businesses have the infrastructure to grow locally and globally*

*Local businesses thrive and grow*

### Good Governance

*We demonstrate strong community leadership and environmental stewardship*

*Our governance is open and transparent*

### Participation and Partnerships

*We have a say in what happens in our local area*

**NORTHERN BEACHES**  
COUNCIL

<sup>9</sup>  
northernbeaches.nsw.gov.au

## Table of Contents - draft

### 1. MESSAGE FROM THE ADMINISTRATOR

- Opportunities for creating a more connected and inclusive community

### 2. INTRODUCTION

### 3. A SNAPSHOT OF THE NORTHERN BEACHES

### 4. WHAT THE COMMUNITY HAVE SAID

### 5. POLICY CONTEXT

- Integrated Planning and Reporting
- Key policies and plans (e.g. District Plan)

### 6. COMMUNITY OUTCOMES (8 THEMES)

- How the outcome area contributes to the vision
- Why it is a priority to the community?
- Benefits to the community
- Where are we now? Where should we be heading?
- **Goals and strategies**

**NORTHERN BEACHES**  
COUNCIL

<sup>10</sup>  
northernbeaches.nsw.gov.au

## WORKSHOP objectives

**To consider the goals and strategic considerations;**

Flag if there are any issues:



1. Do the goal and strategic considerations reflect community needs:

✓ yes

✗ no/ not supported (Fill out a post-it-note with number)

2. Is anything missing? (Fill out a post-it-note with number)

NORTHERN BEACHES  
COUNCIL

<sup>11</sup>  
northernbeaches.nsw.gov.au



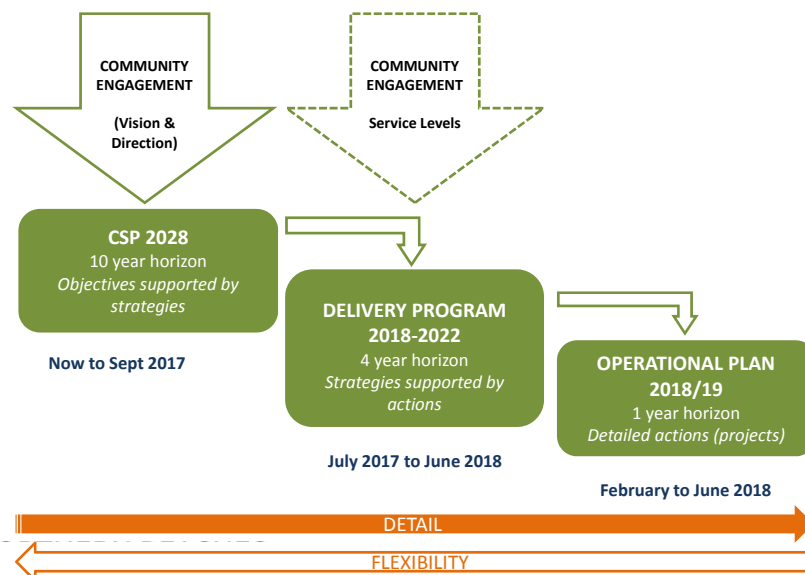
# COMMUNITY STRATEGIC PLAN

<b>VISION &amp; PRIORITIES</b>	<b>Sep - Nov 2016</b> Community engagement: Issues Paper
<b>STRATEGIES</b>	<b>Mar - Apr 2017</b> Community engagement: Discussion Paper Staff and stakeholder engagement
<b>PUBLIC EXHIBITION DRAFT CSP</b>	<b>Jul - Aug 2017</b> Community engagement: Feedback on draft
<b>FINAL CSP ADOPTED</b>	<b>Adoption</b> post September 2017 by the newly elected Council

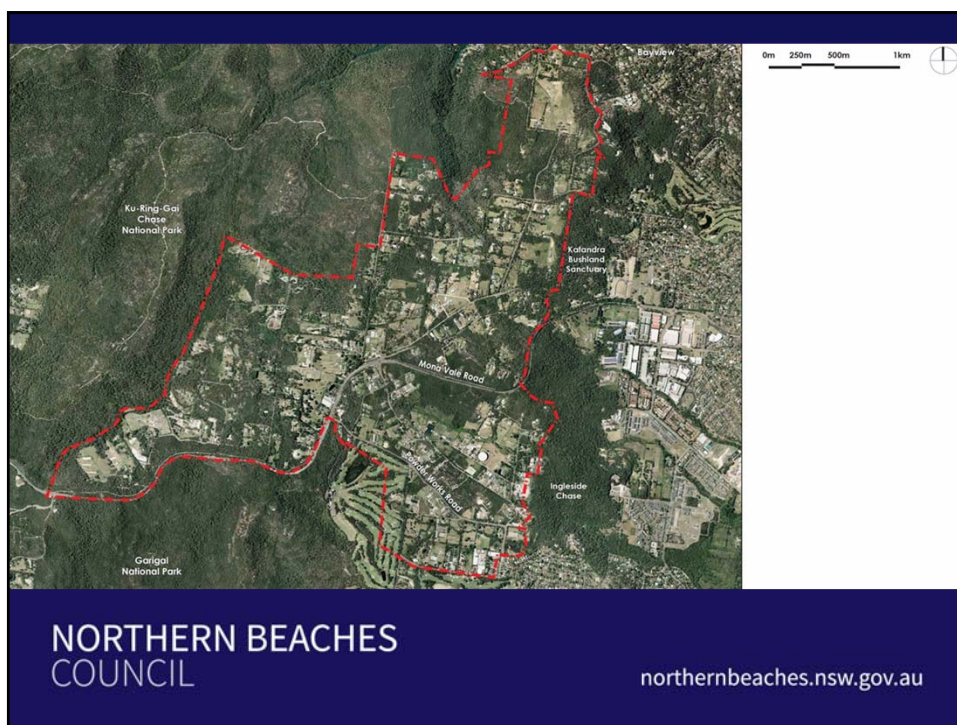
NORTHERN BEACHES  
COUNCIL

[northernbeaches.nsw.gov.au](http://northernbeaches.nsw.gov.au)

## Corporate planning products and deliverables: from community objectives to strategies and specific actions









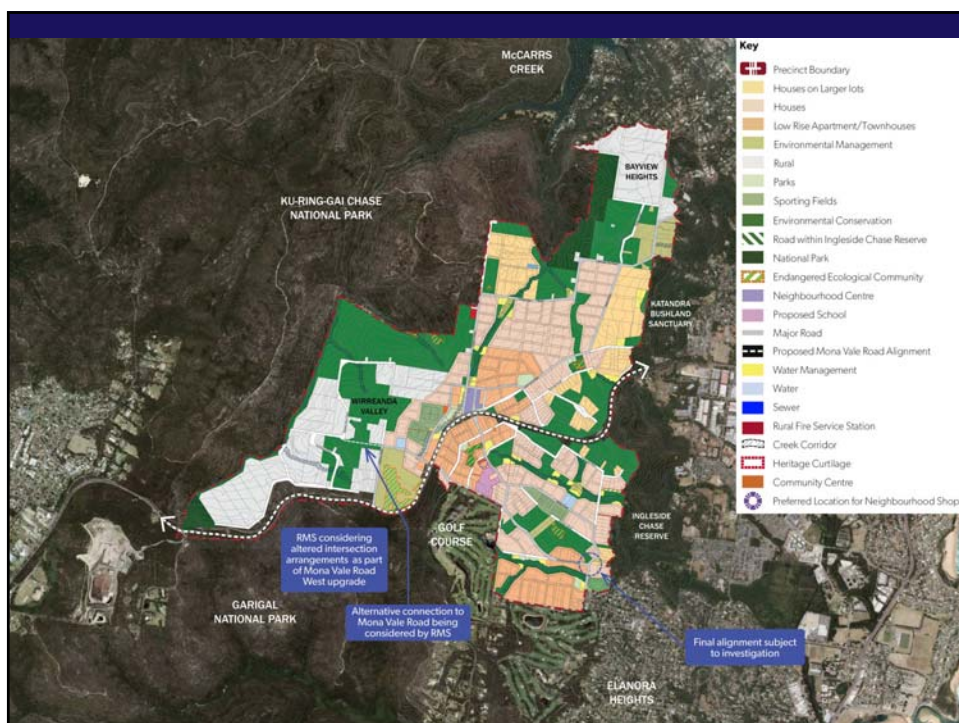
## Background

- Identified for Land Release as early as 1960s
- Many stops and starts since then
- Council resolution of 18 February 2013
- Included in the Metropolitan Plan for Sydney and in District Plan.
- Listed as a “Priority Growth Area” under the *State Environmental Planning Policy (Sydney Region Growth Centres) 2006*
- Vision - A connected, liveable and sustainable community that embraces and respects its landscape setting.

## ***Planning for a sustainable future: The Ingleside Precinct***

NORTHERN BEACHES  
COUNCIL

[northernbeaches.nsw.gov.au](http://northernbeaches.nsw.gov.au)



## Plan Highlights

- 700 hectares
- 40% development
- 30% conservation
- 30% remain in current state
- 3,400 new dwellings
- Affordable housing – up to 10%
- Diverse mix of housing product
- 6 sports fields
- 1 primary school
- 2 community centres
- Neighbourhood centre with local shops

## Strong Environmental Emphasis

- Green Building Council of Australia - Target: 4 Star (Australian Best Practice)
- Water Target : +/-5% environmental flows & +/-10% groundwater across whole precinct
- Beyond BASIX – water and energy targets
- The Precinct will be “bio-certified land”. No net loss of flora or fauna
- Fauna connectivity

## Where to from here?

### **Exhibition until 28 February 2017**

- [Pin Your Ideas using Social Pinpoint](#)
- ICRG in December
- Drop in sessions scheduled in February

### **Post – Exhibition**

### **Formal Exhibition of Zoning Package (April 2017)**

### **Adoption of Section 94 Plan by Council (before land is rezoned)**

### **Forward adopted Section 94 Plan to IPART**

### **Land is formally rezoned (Mid-late 2017)**





## Greater Sydney Commission

### What is the Greater Sydney Commission?

- The Greater Sydney Commission (GSC) was established by the NSW Government in 2016 to focus on the coordination and alignment of planning that will shape the future of Greater Sydney.

It is responsible for metropolitan planning in a partnership between State and local government.

Greater Sydney is divided into 6 Districts

Central  
North  
West Central  
West  
South West  
South



# Greater Sydney Commission

## Who are the members of the Greater Sydney Commission?

- The membership of the GSC consists of 4 Greater Sydney Commissioners, being
  - Chief Commissioner – Lucy Hughes Turnbull
  - Economic Commissioner – Geoff Roberts
  - Environment Commissioner – Roderick Simpson
  - Social Commissioner – Heather Nesbitt
- Chief Executive Officer - Sarah Hill
- 3 Ex-Officio members, being Secretaries of
  - NSW Treasury
  - NSW Planning
  - Transport for NSW

# North District

## What is the North District?

- The North District is 1 of 6 Districts of Greater Sydney
- The District consists of 9 Local Government Areas, being:

Northern Beaches  
 Hornsby  
 Hunter's Hill  
 Ku-ring-gai  
 Lane Cove  
 Mosman  
 Ryde  
 Willoughby





# North District

## Snapshot- North District

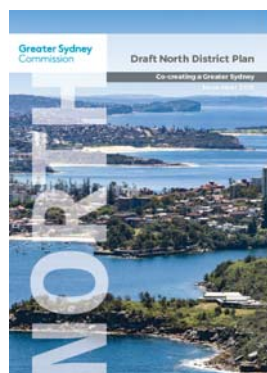
Geographically diverse encompassing coastline, harbour and bushland suburbs of northern Sydney. The area comprises productive and vibrant centres, employment hubs and a thriving tourism sector.



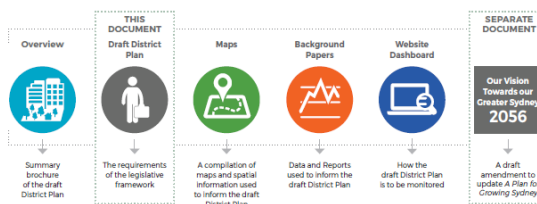
# Draft North District Plan

## Draft Plan on Exhibition

- The draft North District Plan and the draft amendment to update *A Plan for Growing Sydney* is currently on exhibition until March 2017



### Draft North District Plan Exhibition



You can view these supporting components, as well as *Our vision - Towards our Greater Sydney 2056*, our proposed 40-year vision for Greater Sydney, at [www.greater.sydney](http://www.greater.sydney)

# Draft North District Plan

## What the draft North District Plan Means for Local Government

- Proposes priorities and actions that will influence the role of local government, specifically how local government plan for future growth.
- The draft Plan will:
  - Inform the preparation of local environmental plans
  - Inform planning proposals
  - Guide strategic land use, transport and infrastructure planning and investment across local government areas,
  - Inform infrastructure planning and investment
- Status of the draft North District Plan
  - Guide the preparation of Planning Proposals under Part 3 of the Environmental Planning & Assessment Act 1979
  - Once the draft District Plan is made, Council's are required to give effect to the District Plan as soon as practicable
  - The Draft District Plan/ District Plan is not a mandatory matter for consideration (S79C) for determination of development applications under Part 4 of the Environmental Planning & Assessment Act 1979.

# Draft North District Plan

## What is the Structure of the Plan?

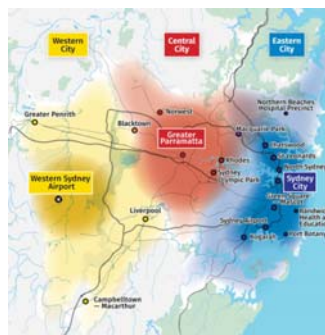
- Incorporates the following sections:
 

**Section 1** – Introduction: sets the framework for the Plan including the role of district plans, implementation and a preamble of the evolution of the 4 goals of the *A Plan for Growing Sydney*, into 3 new interconnected concepts of a Productive city, A liveable city and a sustainable city

**Section 2** – Our vision Towards our Greater Sydney 2056: outlines the proposed draft amendments to *A Plan for Growing Sydney* to allow it to align with the vision established by the draft District Plan. This section also raises the 3 city concept for Greater Sydney, being Western Sydney, Central City and Eastern City.

**Sections 3 to 5** - Outlines a range of strategies and specific actions designed to achieve the draft District Plans vision of a Productive/ Liveable/Sustainable City

3. A Productive City	4. A Liveable City	5. A Sustainable City
a growing city	an equitable polycentric city	A city in its landscape
a city with smart jobs	a city of housing choice & diversity	An efficient city
a 30-minute city	a collaborative city	A resilient city





# Draft North District Plan

## What are the key Priorities?

- The draft North Plan sets out 8 Priorities



### Grow jobs in centres and on urban services land

North Sydney, St Leonards, Chatswood and Macquarie Park provide significant jobs that contribute to Greater Sydney's international competitiveness. We want to improve the connections between these centres and with the rest of the District, whilst reinforcing connections with Parramatta and Sydney City. We also want to retain access to employment and essential support services in the small number of light industrial and urban services areas in the District.

**In 2015, 5% of Greater Sydney's employment lands were located within the North District.**



### Optimise Northern Beaches Hospital as a catalyst for a new centre

We want to collaborate across government and with the community to guide planning and delivery of the Northern Beaches Hospital. We want to attract innovative health and medical related commercial premises to support the hospital. We want to create a health services precinct and a new well-connected strategic centre that's designed to provide a mix of commercial and residential use and community facilities to better support the people who visit, live and work there.



### Create affordable and diverse housing

We want more people in the North District to be able to afford to stay in the area, and we can do this by planning for greater housing choice and diversity, including affordable rental housing and social housing. This will help young families and lower income earners to live independently, and older people to stay in the local area that they know. We will also monitor housing outcomes and partner population growth with infrastructure planning.



### Leverage investment in transport infrastructure

Investment in Sydney Metro and NorthConnex presents opportunities to spur on economic growth in Macquarie Park, St Leonards, North Sydney, Chatswood and around Sydney Metro station precincts. NorthConnex will help to shift traffic away from the busy Pacific Highway and Pennant Hills Road so that places along these routes can be revitalised.

**Macquarie Park has the potential to become Australia's fourth largest commercial centre by 2036.**

# Draft North District Plan

## What are the key Priorities?



### Manage natural hazards

A growing District close to bushland and on the edge of the coast must be resilient to bushfire, floods, storms and coastal inundation, especially in places where urban areas meet bushland and waterways. We need effective policies that protect the values of the District's metropolitan rural areas and respond to the impacts of climate change and natural hazards.



### Protect heritage, character and liveability

Our Aboriginal, European and natural heritage areas sit among busy neighbourhoods and suburbs and add to the District's character, arts and culture. We want to protect these areas and design new places that people will enjoy using and visiting. We want to make it easier for people to walk and cycle to, from and within places, and create better connections to the many green areas and waterways that wind through the District.



### Plan for demographic change

With an increase in the proportion of children and people over 65 and over 85, we need to plan for a greater choice in homes, as well as health care facilities, community buildings, schools, social and support services. Providing more opportunities for women with children and people over 65 to have access to local jobs will be important in addressing the changing demography within the North District and will strengthen the District's communities.



### Protect the natural landscape

The District's natural landscape, biodiversity and waterways are real assets and create an attractive backdrop for the District. While protecting these areas we also want to look at how we can attract more visitors and provide easier walking and cycle access to coastal and harbourside areas. We will also plan for effective waste management and ways to lessen any impacts in relation to noise, odour and air quality.

# Darft North District Plan

## What are the key Productivity Actions?

### A Productive City



#### Productivity actions

Action	Outcome	Lead agency	Partners
P1: Develop better understanding of the value and operation of employment and urban services land	Increase in total jobs	CSC	Councils
P2: Develop and implement an economic development strategy for the Eastern City	Increase in total jobs and increase in health and education and knowledge and professional services jobs	DoI	CSC, Jobs for NSW, AA
P3: Create a sense of place, grow jobs and diversify activity in Macquarie Park	Increase in total jobs and increase in health and education and knowledge and professional services jobs	CSC, DPE, Council	Stakeholders, State agencies, industry
P4: Facilitate place making and the growth and diversification of job opportunities in St Leonards	Increase in total jobs and increase in health and education and knowledge and professional services jobs	DPE, Councils	CSC
P5: Coordinate planning and infrastructure delivery in the Northern Beaches Hospital Collaboration Area	Increase in total jobs and increase in health and education and knowledge and professional services jobs	CSC	NSW Health, other State agencies, Council
P6: Grow and manage the visitor economy within the District	Increase visitation	CSC	Destination NSW, Councils

# Draft North District Plan

## What are the key Liveability Actions?

### A Liveable City



#### Liveability actions

Action	Outcome	Lead agency	Partners
L1: Prepare local housing strategies	Increase in diversity of housing choice	Councils	
L2: Identify the opportunities to create the capacity to deliver 20 year strategic housing supply targets	Creation of housing capacity	CSC	Councils, DPE
L3: Councils to increase housing capacity across the District	Creation of housing capacity and increase in diversity of housing choice	Councils	
L4: Encourage housing diversity	Increase in diversity of housing choice	DPE	

L5: Independently assess need and viability	Increase in affordable rental housing	CSC	Industry CHPs, DPE
L6: Support councils to achieve additional affordable housing	Increase in affordable housing	CSC	Councils, DPE
L7: Provide guidance on Affordable Rental Housing Targets	Increase in affordable rental housing	CSC	DPE, Councils, State agencies, CHPs
L8: Undertake broad approaches to facilitate affordable housing	Increase in affordable housing	CSC	Councils, Industry CHPs
L9: Coordinate infrastructure planning and delivery for growing communities	Change in industry perceptions (surveyed)	CSC	DPE
L10: Provide data and projections on population and dwellings for local government areas across Greater Sydney	Contribute to more informed infrastructure investment decisions, strategic planning and plan making	DPE	
L11: Provide designed planning to support high quality urban design	Contribute to improved sustainability productivity and liveability outcomes	OCA	CSC
L12: Develop guidelines for safe and healthy built environments	Contribute to improved health outcomes and increased walking and cycling	CSC	DPE
L13: Conserve and enhance environmental heritage including Aboriginal, European and natural	Identification and protection of heritage elements	DEH, DPE, AA	CSC, Councils
L14: Develop a North District sport and recreation participation strategy and sport and recreation facility plan	Contribute to informed decision making for sport and recreation infrastructure and increased participation	Office of Sport	Councils
L15: Support planning for shared spaces	Increase in the provision of community facilities, including open space	CSC, DEC	State agencies, organisations, providers
L16: Support planning for school facilities	Improved education infrastructure decision making	DPE	NSW Property, DEC
L17: Support the provision of culturally appropriate services	Improved decision making with the Aboriginal community	CSC, AA	
L18: Support planning for emergency services	Contribute to improved decision making for emergency services operation	DPE	
L19: Support planning for cemeteries and crematoria	Improved decision making for new and existing cemeteries and crematoria	CCNSW	

# Draft North District Plan

## What are the key Sustainability Actions?

### A Sustainable City



#### Sustainability actions

Action	Outcome	Lead agency	Partners
S1: Review criteria for monitoring water quality and waterway health	Improved water quality and waterway health	OEH	CSC
S2: Update information on areas of high environmental value	Protection and management of areas of high environmental value	OEH, DPE	Councils
S3: Use funding programs to deliver the North District Green Grid priorities	Delivery of the Green Grid priorities	CSC, TNSW, OEH	Councils
S4: Develop support tools and methodologies for local open space planning	Improved utilisation of open space and increased provision of open space	CSC	
S5: Update the Urban Green Cover in NSW Technical Guidelines to respond to solar access to roofs	Protection of solar access to roofs	OEH, DPE	
S6: Identify land for future waste reuse and recycling	Identification of land for waste management	EPA, DPE	Councils
S7: Embed the NSW Climate Change Policy Framework into local planning decisions	Contribute to energy efficiency, reduced emissions and improved environmental performance	CSC	Councils, OEH
S8: Support the development of initiatives for a sustainable low carbon future	Contribute to energy efficiency, reduced emissions and improved environmental performance	CSC, Councils, DPE	
S9: Support the development of environmental performance targets and benchmarks	Contribute to improved environmental performance	CSC	NSW Climate Council, Australian Government, utility providers
S10: Incorporate the mitigation of the urban heat island effect into planning for urban renewal projects and Priority Growth Areas	Contribute to reductions in ambient temperatures	DPE	
S11: Review the guidelines for air quality and noise measures for development near rail corridors and busy roads	Improved land use and transport decision making	EPA, DPE	
S12: Identify and map potential high impact areas for noise and air pollution	Improved land use and transport decision making	ERA	DPE, Councils

# Draft North District Plan

## What Targets have been set?

### Job Targets

Centre	Centre Type	2036 Baseline Target
Northern Beaches Hospital precinct	Strategic	12,000
Brookvale-Dee Why	District	23,000
Manly	District	6,000
Mona Vale	District	5,000

### Housing Target



5 Year Housing Targets **3,400**

20 year Strategic target to be set via local Residential Housing Strategy

Affordable Rental Housing Target (5% to 10%)

# Draft North District Plan

## What the Plan states about our Centres?



Figure 3: Marley Centre and surrounding areas

- Marley**
- Proposed priorities:
    - maintain the mix of uses so that Brookvale One City continues to perform strongly as a well-balanced, self-sustaining combined centre
    - encourage and support improvements to Marley Road and better integrate it with the fabric and life of Brookvale One City
    - encourage provision of affordable housing to attract and retain key workers to local industries, particularly in Brookvale
    - recognise and enhance the economic and employment opportunities along Marley Road and encourage revitalisation along this commercial strip



Figure 4: Mona Vale Centre and surrounding areas

- Mona Vale**
- Proposed priorities:
    - protect and enhance the commercial and retail function of the centre to provide employment, growth and maintain high job concentrations
    - ensure sufficient local and commercial open space is provided to meet future demand
    - strengthen the Mona Vale & One Stop as a key intersection of use in the centre, with an emphasis on the provision of housing opportunities to meet 15 to 20 year olds
    - encourage opportunities to increase residential development around the centre
    - improve access and linkages to local destinations, such as Mona Vale Hospital, through priority pedestrian networks
    - promote walking and cycling to the centre and within it
    - retain and protect the industrial precinct to the north of the centre to serve the growing population
    - investigate feasibility of existing planning provisions and controls as they relate to mixed use and residential development within the centre
    - promote place making initiatives to provide mixed use activities, urban activation and mixed density housing, and improve connectivity and integration with existing transport



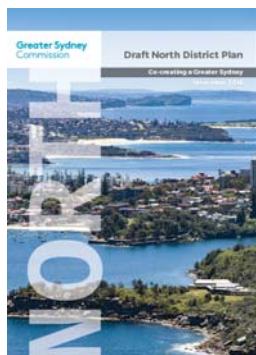
Figure 5: Brookvale One City Centre and surrounding areas

- Brookvale One City**
- Proposed priorities:
    - promote walking, cycling and public transport to Marley Road, the Brookvale industrial area and One City to alleviate traffic congestion on Marley Road and to reduce car dependency
    - encourage the establishment of new, innovative and creative industries in the Brookvale industrial area
    - encourage new theatre or entertainment use to activate local streets in Brookvale One City
    - improve connectivity between Brookvale One City and Northern Beaches Hospital and beyond

# Draft North District Plan

## How can I get involved and provide feedback?

### Step 1: Review the draft Plan



### Step 2: lodge a submission

To find out how to get involved or lodge a formal submission, visit [www.greatersydney.com.au](http://www.greatersydney.com.au)

- Join the conversation

Facebook  
[/greatersydneycommission](https://www.facebook.com/greatersydneycommission)

Twitter  
[#greatersydney](https://twitter.com/greatersydney)

LinkedIn  
[/greater-sydney-commission](https://www.linkedin.com/company/greater-sydney-commission)

Instagram  
[/greatersydneycommission](https://www.instagram.com/greatersydneycommission)

- Call us on 1800 617 681

