



northern
beaches
council

Places for People
Strategic Reference Group

MINUTES

PLACES FOR PEOPLE STRATEGIC REFERENCE GROUP

held in the Coastal Environment Centre, Narrabeen on

THURSDAY 13 SEPTEMBER 2018

**Minutes of the Places for People
Strategic Reference Group
held on Thursday 13 September 2018
in the Coastal Environment Centre, Narrabeen
Commencing at 6:00pm**

ATTENDANCE:

Committee Members

Cr Ian White (Chair)
Mayor Michael Regan
Cr Stuart Sprott (arrived 6.20pm)
Stephen Pearse
Sita Mason
Jim Koopman
Merinda Rose
Les Irwig
Mark Lowe
Miranda Korzy
Suzanne Cairns
Richard Michell
Kelvin Millsom

Manly Dogs
Manly, Warringah and Pittwater Historical Society
Northern Beaches Junior AFL Association, Manly Warringah
Pittwater Sporting Union

Council Officer Contacts

Melissa Messina	Acting General Manager Planning Place & Community
Steven Lawler	Executive Manager Parks & Recreation
Anne-Maree Newbery	Manager, Strategic & Place Planning
Neil Cocks	Acting Executive Manager Strategic & Place Planning
Renee Coull	Principal Planner
Janine Formica	Heritage Planner
Sherryn McPherson	Governance Coordinator
Tamara Lukic	Governance Officer

Visitors

Minna Muhlen-Schulte	GML Heritage
Dr Charles Pickett	GML Heritage

1.0 APOLOGIES

Apologies were received and accepted from Councillor Bingham, David Kerr, Andrew Pigott, Caroline Ghatt and Maryann Novakovic.

2.0 DECLARATION OF PECUNIARY AND CONFLICTS OF INTEREST

There were no declarations of pecuniary or non-pecuniary conflicts of interest.

3.0 CONFIRMATION OF MINUTES OF PREVIOUS MEETINGS

3.1 MINUTES OF PLACES FOR PEOPLE STRATEGIC REFERENCE GROUP MEETING HELD 7 JUNE 2018

Richard Michell / Merinda Rose

The minutes of the Places for People Strategic Reference Group meeting held 7 June 2018, were confirmed as a true and correct record of the proceedings of that meeting subject to the following amendment of location from Coastal Environment Centre, Narrabeen to Council Chambers, Dee Why.

5.0 UPDATE ON ACTIONS FROM THE LAST MEETING

Meeting Date	Item No.	Responsible Person	Action	Due Date	Outcome / Comments	Status
7 June 18		Andrew Pigott / Steven Lawler / Sherryn McPherson	The following items be included on the June agenda: 1. Update on the Avalon Place Plan. 2. Thematic history of the Northern Beaches. 3. Update on the Open Space Strategy	24 Aug 18	Included in September Agenda.	Complete

Neil Cocks addressed this item and advised that the actions from the last meeting are complete and all the reports have been included in this agenda and also provided the following update on the Frenches Forest Planning Precinct:

Frenches Forest Planning Precinct Update

The Department of Planning and Environment are focusing on implementing Phase One of the Northern Beaches Hospital Precinct Structure Plan and establishing a vibrant new town centre next to the hospital, creating a new destination and focal point for the community.

Council will assist with the creation of the Design Plan, drafting Section 94 and other Infrastructure Levy Contribution plans and a Community Engagement Strategy.

Council resolved at the 26 June 2018 Ordinary Meeting:

- A. *Council write to the NSW Department of Planning and Environment confirming the preferred forward path for the Frenchs Forest Planned Precinct is a one-step exhibition process to consult on Option 1, which is largely consistent with the Northern Beaches Hospital Precinct Structure Plan (2017) and to exhibit the rezoning documents in the latter part of 2018.*
- B. *The future planning controls to apply to the town centre site require that, prior to any consent being granted, an applicant is to demonstrate the achievement of design excellence through a competitive design process.*

Council and the NSW Department of Planning and Environment will now move into the next phase of work to prepare detailed planning controls for Phase 1 of the Hospital Precinct at Frenchs Forest. Further opportunities for community engagement will be available later this year. Members are encouraged to be involved in this process to help provide feedback on the draft rezoning package.

5.0 AGENDA ITEMS

5.1 NORTHERN BEACHES THEMATIC HISTORY PROJECT

The group welcomed Minna Muhlen-Schulte and Dr Charles Pickett from GML Heritage who are assisting Council with this project and provided an update to the group on this item.

A copy of the presentation provided to the group is attached to the minutes (refer Attachment 1).

A Thematic History Community Reference Group is in the process of being established by Council. This will be a small group of community members who will assist the consultants in identifying local historical resources and information and consistently communicate with Council at each stage / milestone. It is envisaged that the group will meet on four (4) occasions throughout the project preparation. Nominations for the Thematic History Community Reference Group will be advertised in late September 2018.

GML Heritage have identified a two (2) stage methodology:

- Stage 1: Review, Research and Consultation
- Stage 2: Identify Themes and Prepare History

The work programme is expected to take 16 weeks from appointment to draft Thematic History, with the final document delivered two weeks after receiving review comments from Council.

As part of Stage 1, the members recommended the following items recommended be included in researching the history of the area:

- Former community associations / organisations / groups / committees
- Sporting Clubs
- Obtaining and researching material from Libraries in the LGA
- Agriculture – Warriewood's heritage farmlands and Brookvale shows
- Country Womans Association Manly
- Gas industry
- Boating Industry: Involvement of Americas cup originated Avalon / Palm Beach area
- Fishing: The area's involvement in export
- Palm Beach boat shed assisting in building of the panels for the Opera House

Question from the group to Council: Where does Aboriginal History fit into the Thematic History project?

Answer: The Aboriginal history which has been included in the previous reports will be reviewed and expanded upon from existing local themes. The Coastal Trail and consultation has uncovered some important points which will be investigated and incorporated.

Question from the group to Council: What will the end product look like? I.e a book, website...

Answer: The end product will be in a book style report written in the form of a narrative with a visual accompaniment. This will also be digitalised which allow Council to share online to the local community.

Question from the group to Council: How much of the brief will be digitised in regards to discussions and stories uncovered in the area?

Answer: Project officers will be talking to local historians on how we can incorporate and share the content.

Question from the group to Council: Will this report be reviewed in the future in the instance gaps are identified and there is further opportunities to include more content, reviews and update in the future?

Answer: The support through the Thematic History Community Reference Group which will refine the information and include as much as possible and further document the information received through the consultation process.

Question from the group to Council: Is there a specific guideline to this brief in regards to the information you collect or does it also target and highlight particular items that are important to the community?

Answer: Thematic history is traditionally driven by the NSW Office of Environment and Heritage who have defined the keystones in which drives the brief and its interpretation. Other items may be uncovered during the research for the brief and may be dealt with in an alternative way if it does not meet the definition as set out in the initial guidelines.

Question from the group to Council: How can the members provide input into this project and is there a central contact in which they can forward information?

Answer: Information can be sent to Janine Formica, Heritage Planner at Northern Beaches Council on janine.formica@northernbeaches.nsw.gov.au

5.2 DRAFT MOVEABLE HERITAGE MANAGEMENT POLICY

Anne Maree Newberry provided an update to the group on this item:

Council at its meeting on 19 December considered a Notice of Motion on Moveable Heritage. With the amalgamation of three Councils into one, it was considered important that Council actively records, protects and becomes the custodian of items of moveable heritage. Amongst other things, the resolution called for the preparation of a Moveable Heritage Management Policy.

This draft policy has been placed on public exhibition for comment and internal consultation with relevant business units has also occurred. In accordance with the Council resolution, this Draft Policy is now presented to the Places for People Strategic Reference Group for its information and feedback, prior to it being finalised.

Consultation is continuing with relevant business units within Council and the content of the Draft Policy is being reviewed in light of the comments received from the community submissions.

A revised Draft Policy is anticipated to be reported to Council on 27 November 2018, along with recommendations for its implementation.

Question from the group to Council: What is the overarching framework / guideline for this item in relation to Movable Heritage Management Policy?

Answer: The overarching framework will be a Collection Policy. The policy is also in the process of being created and will set out the guidelines for the Movable Heritage Management Policy.

Question from the group to Council: Can the Movable Heritage Management Policy be reported to Council as a draft in the interim whilst the Collection Policy is being created instead of being delayed?

Answer: The Collection Policy will guide and contain objectives relevant to the Movable Heritage Management Policy. The Collections Policy is also linked to the Coastal Walkway in which they are moving forward with rapidly. A report can be provided to Council in November with an update of the progress of this item however as the policies are aligned, we need to ensure the consistency between the two. If we have both draft policies ready at this time, approval will be sought from Council to endorse and place them on public exhibition.

5.3 PROJECT UPDATE ON MY PLACE AVALON

Anne Maree Newberry provided an update to the group on this item:

Council is committed to creating places for people and has initiated a place planning process, My Place, as an approach to planning, design and management of village and neighborhood centres.

Avalon is the first centre within the Northern Beaches Council Local Government Area to undergo My Place planning process, known as My Place: Avalon.

The draft Plan will be formulated and delivered with the assistance and support of the My Place: Avalon Community Reference Group (the Group), who will work collectively with Council staff to review, consider and develop the ideas and concepts identified by the community during the initial consultation phase. The Group will be aiming to provide a forum for discussions between Council and the local community on the preparation of the Avalon Place Plan.

Question: Has there been discussions with the Avalon Community in respect to the My Place Avalon plan in regards to density of amenity?

Answer: Council has executed a variety of targeted workshops to capture the input of the Avalon community into this project. Council has interacted with the community to document what the people love most about the area, their greatest values and the management of future growth. These discussions have led to answers such as transport & linkage, economic and environmental matters. Avalon is passionate about keeping the village the same as it is now and without encouraging an immediate heavy growth impact.

Question from the group to Council: When is it expected for the plan to be endorsed and will there be further progression of the Mona Vale Place Plan?

Answer: The Avalon, Mona Vale and Manly Place Plans will be reviewed during this financial year. Council's priority is to progress the My Place Avalon first.

5.4 NORTHERN BEACHES LOCAL ENVIRONMENT PLAN

Neil Cocks provided provided an update to the group on this item:

The Group was informed that this project aligns with the outcomes in the Northern Beaches Delivery Program as the changes have outlined Council's obligations in preparing the Land Environment Plan (LEP) review and Local Strategic Planning Statement (LSPS).

The Strategic and Place Planning are working with the Greater Sydney Commission, the Department of Planning and Environment and other teams across Council to ensure that all projects, studies and investigations are captured to assist in the development of the above documentation.

A copy of the Local Environment Plan review process is attached to the minutes (refer Attachment 2).

Question from the group to Council: Once Council has identified the important items and risks, can you run some of these investigations with the Community to look at new visions for the area?

Answer: In terms of the engagement, Council will incorporate the vision but do not want to make statements without appropriate consultation with the community. It will be critical for Council to have growth conversations with the community in order to prepare for the next 20 years and what those targets actually mean.

Council will be preparing a Consultation Plan which will be built in the Local Planning Strategic Statement. The Department of Planning requires the Local Strategic Planning Statements (LSPS) in particular to address proposed growth and the improvements in the area. Studies will be around housing and employment prior to conversations with the community before we can create scenarios. Topics to be further considered are history, transport strategy (growth in centres and corridors), environment and housing which will all incorporate growth changes and defining development in those areas. The initial consultation will be focusing on the vision.

Question from the group to Council: In regards to the 20 year vision for the Northern Beaches Council in the LSPS, how will this be created if the LEP Review is not completed?

Answer: The Local Environment Plan (LEP) review is the first stage of the process and is meant to identify the gaps in policy and extra work we will need to do before developing a new LEP. The review must have regard to the directions in the District Plan. In many cases it's the strategies and studies that Council is working on which sit outside the LEP that go towards meeting the requirements of the District Plan and demonstrate how we are managing those issues identified in the District Plan. Many of the objectives of the District Plan are being met outside the LEP.

Question from the group to Council: The North District Plan states that we have 5000 extra people expected to relocate to the Northern Beaches LGA, where will we put them and how do we balance the needs and desires for our existing residents?

Answer: Community engagement on this issue is critical. Whilst there is some flexibility in the targets we need to collect strong data if we were to argue that we could not meet them. We will undertake constraints mapping to rule out unsuitable land. Frenchs Forest and Ingleside will incorporate a lot of new dwellings, helping us to meet the short term targets. There will be ongoing discussions on how we can meet targets and we will be testing a number scenarios. Of course the targets must be contingent on sufficient infrastructure, particularly transport infrastructure being provided. This will also be part of the conversation with the community.

5.5 NORTHERN BEACHES EMPLOYMENT STUDY

Renee Coull provided an update to the group on this item:

- Council's Strategic Planning and Place and Economic Development teams are developing the Employment Study's scope.
- The study will assess the demand/supply for retail, office and industrial space across the region over the next 20 years, based on an audit of existing employment lands and development of industry employment projections.
- Through industry research, interviews and surveys, the study will identify which industries/clusters that are expected to grow fastest and also which align with the skills of the resident workers on the Northern Beaches.
- The study will result in directions and recommendations on how to plan for future job growth to sustain a robust local economy that meets the needs of its current and future resident workforce and business community.
- The study will also provide a technical report which Council's Economic Development Plan will then respond to, in regards to actions to support the industry trends and changing business and workforce needs, identified in the study.

A copy of the maps provided to the group is attached to the minutes at Attachment 3.

Question from the group to Council: What is the expectation that the new Frenches Forest Precinct will succeed in driving an increase in population and is there a possibility of a University?

Answer: (Mayor responded) The Frenchs Forest Hospital is driving a lot more interest in that area. Council is in discussions with other Councils and we are openly pursuing the possibility of establishing a University in the area. ICMS are a private University and are hoping to establish a college University in the area. The Department of Planning are also working with Council on this item.

Question from the group to Council: Would it be possible to use buildings in the LGA for multi-use purposes such as residential and commercial?

Answer: Generally mixed commercial/ residential uses are confined to established centres such as the Dee Why Town Centre and along major corridors. Allowing residential uses in existing industrial zones has the potential to result in the overall loss of industrial uses and creates tension because of the incompatibility of the uses e.g. noise from industrial uses

Action:

That this item be included on a future agenda for further discussion.

5.6 NORTHERN BEACHES OPEN SPACE STRATEGY UPDATE

This item was passed by exception and the information contained in the report was noted.

SUMMARY OF ACTIONS

ITEM NO.	ACTION	RESPONSIBLE OFFICER	DUE DATE
5.5	Northern Beaches Employment Study be included on a future agenda	Andrew Pigott	TBC

The meeting concluded at 8.05pm.

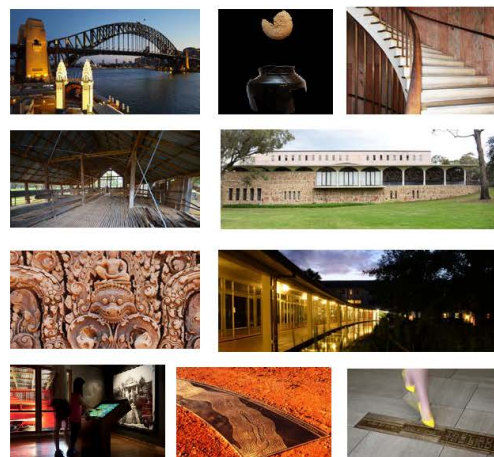
This is the final page of the Minutes comprising 11 pages numbered 1 to 11 of the Places for People Strategic Reference Group meeting held on Thursday 13 September 2018 and confirmed on Thursday 29 November 2018



GML HERITAGE



- Founded in 1989, has worked on over 4,000 heritage projects in suburbs and cities, as well as iconic destinations and World Heritage sites such as Angkor, Parramatta Park, the Sydney Opera House and Lake Mungo National Park.
- Our award-winning services include Aboriginal cultural heritage, archaeology, interpretation and design, landscape, public history, urban and built heritage and working with communities.
- We employ in-house historians and work with professional historians accredited by PHANSW who have experience in NSW's cultural heritage.



OUR TEAM



SHARON VEALE



DR CHARLES PICKETT

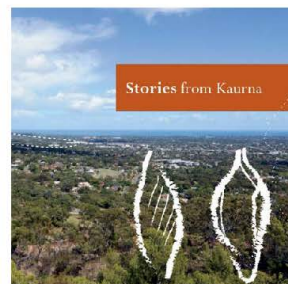


MINNA MUHLEN -SCHULTE

GML HERITAGE RECENT PUBLICATIONS

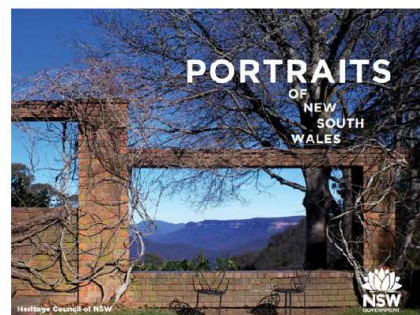
Stories from Kurna (2015)

Our team brought together oral history interviews with Aboriginal Kurna elders who recount their life and history of Adelaide's First People. The book provides insight into important contemporary issues for Aboriginal people, including growing up, restricted movements, loss, dispossession, and their connection, reconnection and return to Country.

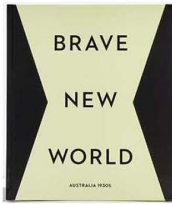


Portraits of the List (2018)

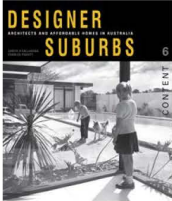
GML was recently commissioned by the Office of Environment and Heritage to produce a thematic history of some of NSW's most significant heritage places and items on the State Heritage Register. The publication was launched by the Minister Gabrielle Upton at the National Trust Awards.



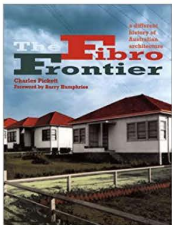
DR CHARLES PICKETT PUBLICATIONS (SELECTED)



Brave New World: Australia 1930s (2017) presents a fresh look at this turbulent decade and considers the engagement of artists with the great issues and historical themes of the time including the Depression, rise of the body culture movement and technological progress.



Designer Suburbs: Architects and affordable homes in Australia (2012) with Judith O'Callaghan explores the relationship between architects, builders and affordable housing since 1900 and the lessons we can learn from twentieth-century designer suburbs.



Fibro Frontier: A Different History of Australian Architecture (1997) is a thematic history of the fibro building in Australia, from the holiday shacks, genteel bungalows and fun fairs of the past, to the international airports and award-winning houses of today.



WHAT IS A THEMATIC HISTORY?

A Thematic History uses themes to research and write the history of an area, detailing its physical and social development over time.

- **Explains** how and why the LGA looks like it does today. It identifies and explains those aspects and themes that help us understand the area and its historic physical fabric.
- **Focused around relevant themes** such as Aboriginal contact, agriculture and governance, that have shaped a locality and provides a framework for identifying and assessing potential heritage places.
- **Links to State and National Heritage themes** to understand how the local history is part of a wider context i.e. developing transport routes, government and administration

HISTORICAL THEMES RELEVANT TO NEW SOUTH WALES

STATE HISTORICAL THEMES

1. Aboriginal contact: may include sites of conflict, resistance, interaction
2. Convict
3. Exploration
4. Pastoralism
5. Agriculture
6. Land tenure — Aboriginal and European: may include subdivisions, fences, survey marks etc.
7. Mining: may include gold, coal, tin, gemstones, sand, shale, quarries etc.
8. Fishing: includes whaling
9. Environment — natural or modified and shaped: may include Aboriginal and European features, clearing, timber-getting, soil conservation, national parks, gardens, special plantings, preservation of open space
10. Townships: may include present, former or aborted settlements, streetscapes
11. Migration
12. Ethnic influences
13. Transport: includes road, rail, water, air
14. Communication: includes printing, postal to modern media
15. Utilities: e.g. water, sewerage, gas, electricity
16. Industry
17. Labour: includes work practices and organised labour
18. Commerce: includes banking, retailing
19. Technology
20. Science
21. Government and administration: includes maladministration
22. Law and order: includes protest
23. Defence: may include Aboriginal battle sites, war memorials
24. Housing

25. Social institutions: e.g. CWA, masonic, progress halls, schools of art
26. Cultural sites: from low to high culture; significant for the creation or performance of art, music, literature, drama, film etc; local symbols
27. Leisure: includes tourism, resorts
28. Sport: includes sporting facilities, equipment, trophies
29. Health: includes hospitals, maternity hospitals
30. Welfare: e.g. charitable and self-help institutions
31. Religion: e.g. churches, convents, manses, mosques
32. Education: includes formal and informal, schools, mechanics institutes, secondary and tertiary educational institutions
33. Death: e.g. cemeteries, undertakers
34. Events: may include monuments, sites of special significance and social value
35. Persons: may include individuals, families, dynasties, birthplace, place of residence, women's sites.

DRAFT NATIONAL HISTORICAL THEMES

National themes should be identified using the following list compiled by the Australian Heritage Commission:

1. Tracing the evolution of a continent's special environments
2. Peopling the continent
3. Developing local, regional and national economies
4. Building settlements, towns and cities
5. Working
6. Educating
7. Governing
8. Developing cultural institutions and ways of life
9. Marking the phases of life.

PURPOSE OF A THEMATIC HISTORY

- **Inform heritage planning** with the amalgamation of Pittwater, Manly and Warringah councils there is a need to review, update and consolidate the existing thematic histories to provide the broader context for local history and heritage planning. By identifying historical themes it will inform conservation, management and interpretation into the future.
- **Understand community's stories** to identify important historical experiences, shaping forces, patterns, events and activities that are part of the Northern Beaches area especially by consulting with local groups and key stakeholders.
- **Social cohesion and identity** we see the Thematic History as an opportunity to help foster community cohesion and local identity by highlighting the Northern Beaches' history and heritage places.

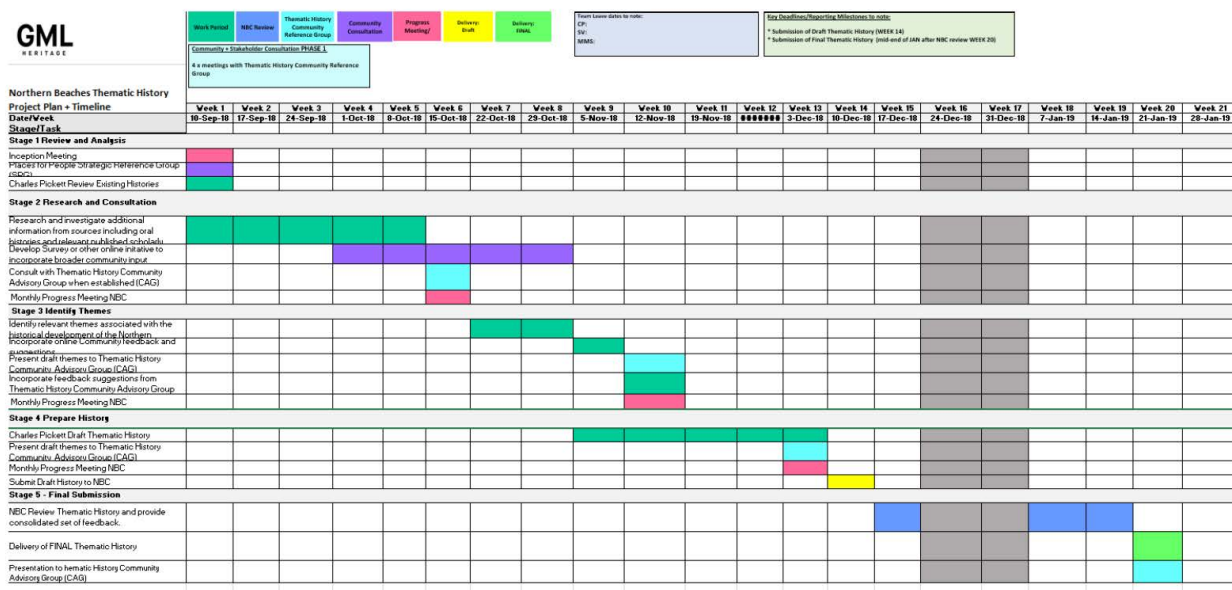
APPROACH TO THEMATIC HISTORY

- **Review and investigate** existing thematic histories: *Manly Thematic History* (1986), *Warringah Historical Context Report* (1994) and *Pittwater Thematic History* (2015).
- **Identify** existing historical themes and indicative places that illustrate them. Consider the inclusion of additional themes where relevant, within the framework of the NSW State themes.
- **Consult** with relevant groups including Thematic History Community Advisory Group (CAG), Manly, Warringah, Pittwater Historical Society; Michelle Richmond (Dee Why Library); and Sharelle Ravenscroft (Mona Vale Library/ Manly Library).

We will also work with Council to consult the broader community to encourage them to share stories, places and themes they would like to see highlighted in the history.

- **Research and Write** a consolidated Thematic History that includes research from a variety of primary and secondary sources and forms the basis of future heritage planning and management.

TIMELINE



EXISTING LOCAL THEMES

- **Manly Thematic History (1986)**
 - Isolation
 - Urban development: Villas 1870s- Flats 1920s – 1930s
 - Community and Social Structure
- **Warringah Heritage Study (1994)**
 - Aborigines and Exploration (1788 – 1810)
 - Surveys and Settlement (1810 -1900)
 - Speculation, Subdivision and Transport (1900-1930)
 - Depression and World War II (1930 -1945)
 - Urban Warringah (1945 – 1991)
- **Pittwater Community Based Heritage Review (2014)**
 - Natural Beauties of Pittwater
 - Infrastructure
 - Leisure, Recreation and Tourism
 - The Garigal
 - Exploration of Pittwater
 - Pittwater
 - Isolation/Access
 - Making a Living
 - Great Outdoors
 - Community and Civic
 - Leisure, Recreation and Tourism
 - Living in Pittwater
 - Architectural Modernism in

POTENTIAL NEW THEMES AND STORIES?



Collaroy 1908



Surfriders, Dee Why, New South Wales David Beal, 1962



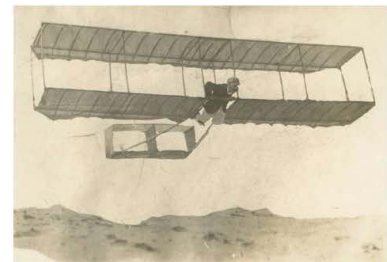
St. Michael's cave, Avalon Beach 'Members of The Royal Australian Historical Society inspecting the cave on Saturday' 1926



Avalon 1920s - A.J. Small's advertising



The Life Savers Manly 1907-1908 by William Hall



George Taylor Flying at Narrabeen, 1909

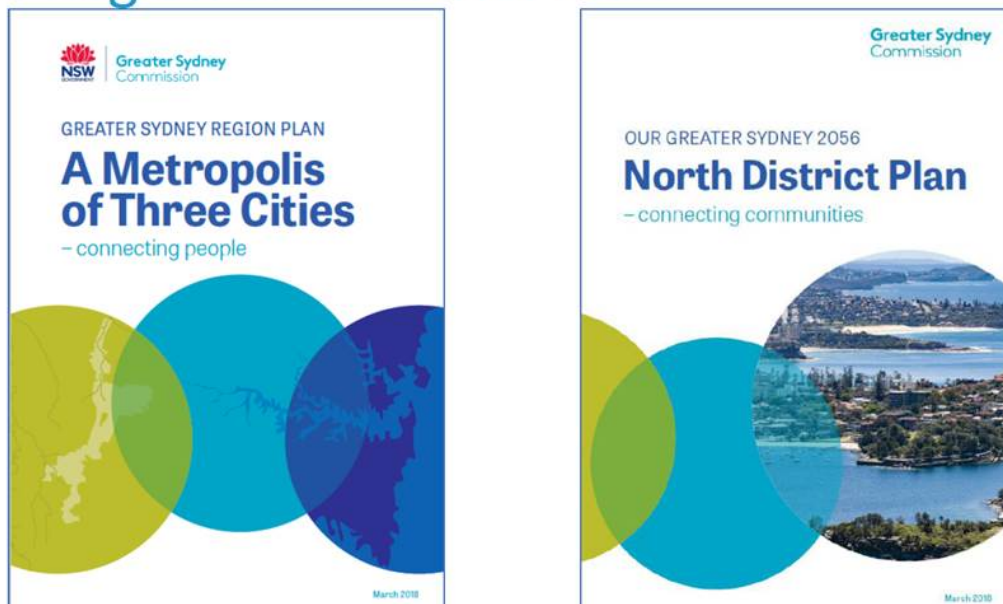
Northern Beaches Local Environmental Plan



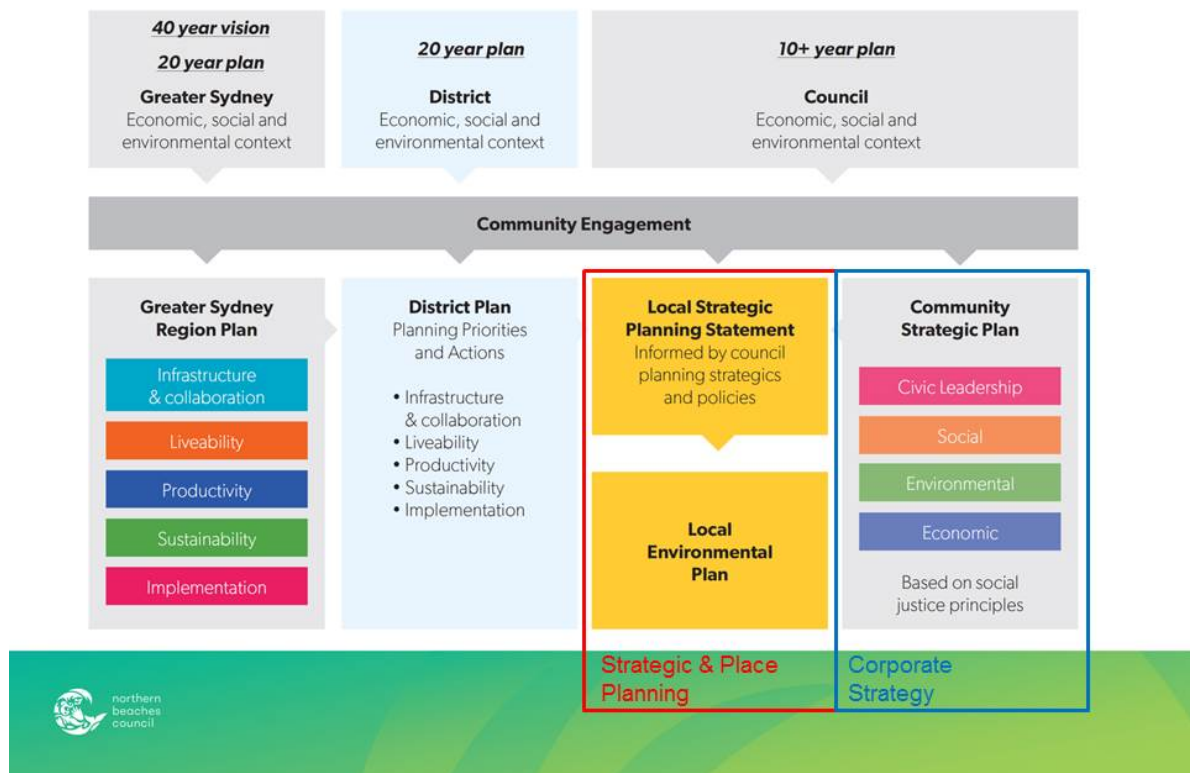
Two significant changes have occurred for planning in NSW over the last 18 months



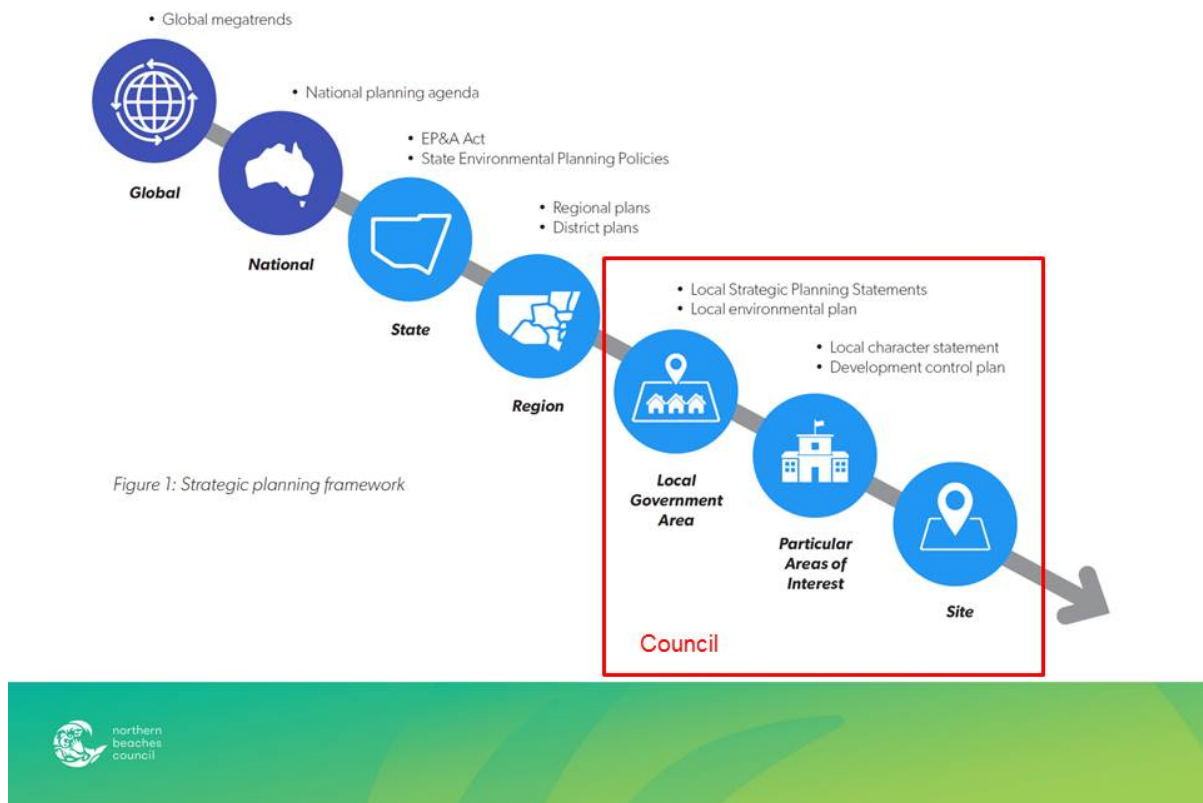
Final Region and District Plan



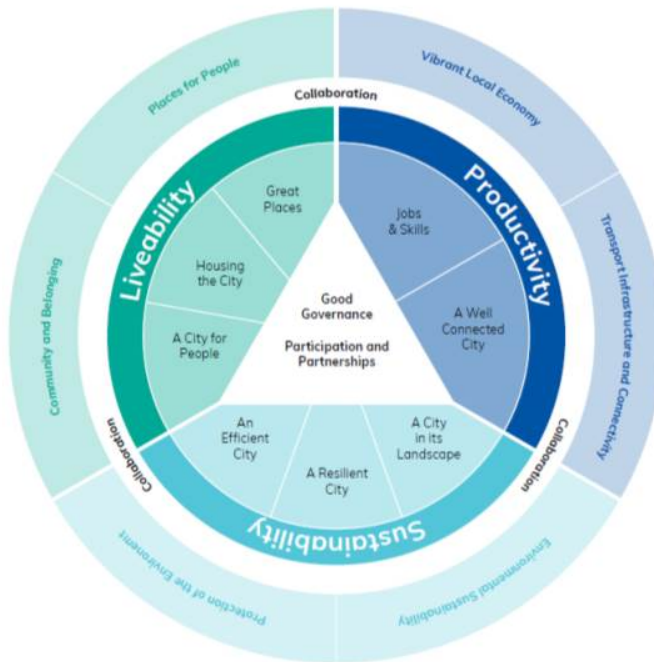
Planning Framework for Greater Sydney Region



Planning Framework for Greater Sydney Region



CSP Alignment with District Plan



District Plan Actions for Strategic and Place Planning

Local Environmental Plan Review

Local Strategic Planning Statement

Local Environmental Plan

Monitor and Reporting

Local Environmental Plan Review

LEP Review template

Parts

1. Introduction
2. Health Check
3. Context
4. Conclusions and Recommendations

Sensitive: NSW Government. Internal purposes only.

APPENDIX ONE

LEP review Template

LOCAL ENVIRONMENTAL PLAN REVIEW TEMPLATE

A standard format for LEP review
Reports to be submitted to the
Greater Sydney Commission



Health Check

District Plan Actions

- LEP clauses that give effect to the Actions
 - Evidence base (studies) to support relevant LEP clauses
 - Degree of compliance
- Council initiatives to support the Actions
 - Plans, policies, programs, strategies, studies



Gap Analysis



LEP Review

- Review Council's
 - LEP
 - DCP
 - Plans, Policies and Strategies
 - Delivery Program
- Are they consistent with the District Plan?
- What are the barriers to delivery, key risks and key findings?
- What are the gaps and what further work is required?
- What are the priorities for this further work?

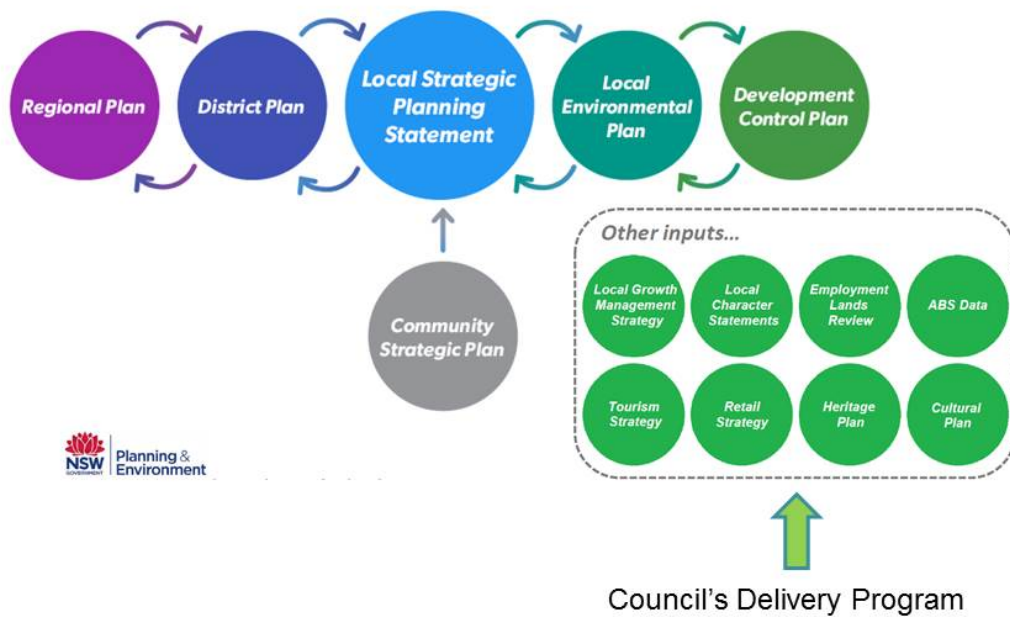


North District Plan Actions Some Relevant Delivery Plan Projects

Infrastructure & Collaboration	<ul style="list-style-type: none">•Transport Strategy•Walking Plan, Bike Plan, Parking Plan etc
Liveability	<ul style="list-style-type: none">•Place making Strategy, Open Space Strategy, Events Strategy•Social Plan, Arts Strategy, Community Centre Strategy•Crown Lands, new community spaces, modernising libraries
Productivity	<ul style="list-style-type: none">•Economic Development Plan•Destination Management Plan•Activation Plans
Sustainability	<ul style="list-style-type: none">•Programs to protect and restore bushland, waterways•Green Star Communities at Frenchs Forest and Ingleside
Implementation	<ul style="list-style-type: none">•Develop and review integrated policy framework•Implement the digital transformation strategy



Local Strategic Planning Statements (LSPS)



What is an LSPS?

20-year vision for councils:

- Land Use
- Special Characteristics
- Shared Community Values
- Management of growth and change



What is an LSPS?

- Provides answers to the land use questions for the LGA
- Gives effects to Regional and District Plans
- Informs amendments to LEPs and DCPs
- Mechanism to introduce change in an LGA
- Integration of land use planning across EP&A Act and LG Act



Timeline consistent to all Councils

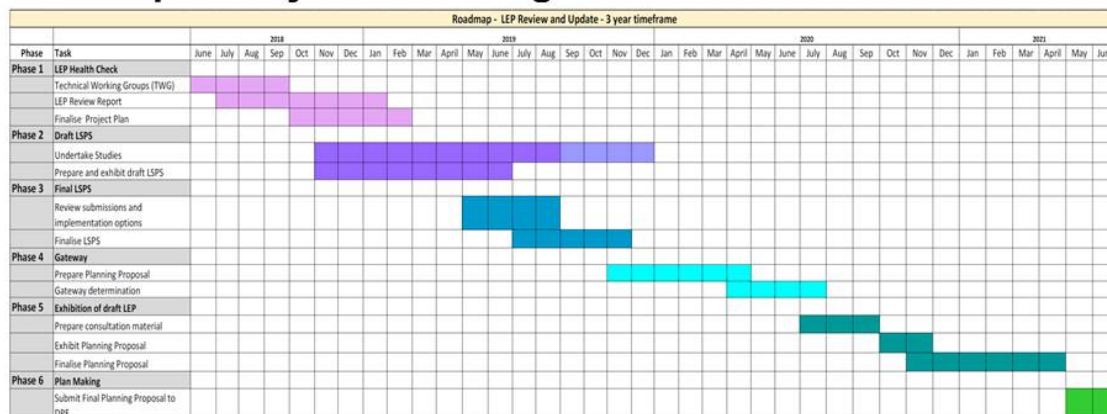
		2018							2019												2020					
Task		June	July	Aug	Sep	Oct	Nov	Dec	Jan	Feb	Mar	Apr	May	June	July	Aug	Sep	Oct	Nov	Dec	Jan	Feb	Mar	Apr	May	June
Phase 1 LEP review (Health Check)	Technical Working Groups (TWG)																									
	Sign Funding Agreement																									
	LEP review report																									
	Finalise project plan																									
Phase 2 Draft LSPs	Undertake studies																									
	Prepare and exhibit draft LSPs																									

Deadlines

- Late 18 – LEP Review to Council
- Nov 18 - Jan 19 – LEP Review to DPE
- Dec 18 - Finalise Project Plan
- May 19 – Exhibit Draft LSPS



Roadmap for 3 year LEP Program



Deadlines

- Nov 19 – Finalise LSPS
- Nov 19 – Commence preparing Planning Proposal
- Oct – Nov 20 – Exhibit Planning Proposal
- Apr 21 – Finalise Planning Proposal
- May 21 – Submit Planning Proposal to DPE



Deliverables

- LEP Review
- Local Strategic Planning Statements
- Relevant studies into:
 - Transport (e.g. Transport strategy; traffic and transport modelling)
 - Housing (e.g. Housing Strategy, Affordable Rental Housing Target Schemes)
 - Social Infrastructure & Open Space
 - Place & Heritage (e.g. Aboriginal and European Heritage; Local Character Statements; Place Planning)
 - Employment (e.g. Employment Strategy including Strategic Industrial Lands Review and Centres and Corridor studies)
 - Environment (e.g. Bushland and Biodiversity; Waterways)
- Community Participation Plan
- Infrastructure Implementation Plan
- Planning Proposal for new LEP
- Development Control Plan



Community Engagement

- Year 1 (2018/19)
 - Conversation re: need to plan for growth 20 years
 - Public exhibition of draft LSPS
- Year 2 (2019/20)
 - Consultation on housing and employment studies
 - Place based consultation - understanding locality character and community character central to the overall direction of the LEP/DCP
- Year 3 (2020/2021)
 - Draft LEP & DCP Exhibition



Next Steps

- Late 18 – LEP Review to Council
- Nov 18 - Jan 19 – LEP Review to DPE
- May 19 – Exhibit Draft LSPS
- Nov 19 – Finalise LSPS



ATTACHMENT 3

