

# NOTES

## **COMMUNITY SAFETY STRATEGIC REFERENCE GROUP**

held in the Councillors Room, Manly Council Chambers on

**THURSDAY 27 OCTOBER 2016**

**Notes of the Strategic Reference Group Meeting**  
**held on Thursday 27 October 2016**  
**in the Councillors Room, Manly Council Chambers,**  
**Commencing at 5:04pm**

**ATTENDANCE**

**Members**

Jean Hay (Chair)	Implementation Advisory Group
Steve Pickering	LRC - Social
Sharon Austin	Resident – Narrabeen Ward
Lance Burrow	NSW Liquor Accord
David Darcy	NSW Police - NB LAC
Sidar Demirbag	Late Night Food Traders
Shannon Job	Surf Life Saving Sydney Northern Beaches
Thomas Loomes	The Office of The Hon Mike Baird MP
Raymond Mathieson	Manly Community Forum
Simon Moriarty	Resident – Curl Curl Ward
Melissa Palermo	Health Promotion, Northern Sydney Local Health District (Northern Beaches)
	<i>left the meeting at 6.50pm</i>
Malcolm Pearse	Community Corrections
Jacquililen Smith	Manly community Centre & Services
Robert Tarabay	State Transit Authority
Sarah Turner	<i>(arrived at 5.35pm and was introduced to the committee by the Chair)</i>
Susan Watson	Manly Drug Education & Counselling Centre
Margaret White	Zonta club of northern Beaches Inc

**Council Officers**

Beth Lawsen	Deputy General Manager Public Affairs
Mick Darda	Executive Manager Place Making
Leanne Martin	Community Safety Coordinator
Lynne Jess	Secretariat
Annie Laing	Administration Officer Governance
Kathryn Parker	Research Officer

## 1.0 APOLOGIES

### DISCUSSION

That the apologies from Michael Olofinsky, Lance Burrow and Susan Watson be noted. It was also noted that Philip Stone resigned from the Group.

Moved: Sharon Austin

Seconded: Ray Mathieson

## 2.0 DECLARATIONS OF PECUNIARY AND CONFLICTS OF INTEREST

### DISCUSSION

No declarations were declared.

## 3.0 WELCOME AND INTRODUCTIONS

### DISCUSSION

Jean Hay, AM former Mayor of Manly opened the meeting at 5.04pm and welcomed members. Members were then asked to introduce themselves and give a brief outline on why they wanted to be on the committee.

## 4.0 ASPIRATIONS

### DISCUSSION

Kathry Parker, Research Officer circulated a copy of the “Strategic Reference Protocols and Guidelines” (Attachment 1) to members and highlighted the following:

- Membership
- Meeting Schedule
- Role of the Chair
- Role of the Executive Manager
- Conduct at Meetings
- Attendance at meetings
- Quorum
- Agenda
- Meeting notes

J Hay, advised that these new committees were strategic not operational. J Hay also advised the group that Manly was the only Council that previously had a Community Safety Committee.

Mick Darda, Executive Manager Place Management, reminded the group that when the previous Council’s merged all previous committees were dissolved. When elected the new Council will decide what committees will be formed and how they wish to engage with the community.

## **4.2 PROFILE OF NORTHERN BEACHES AREA KATHRYN PARKER**

### **DISCUSSION**

Kathryn Parker, Research Officer gave a presentation (Attachment 2) on the Demographics and highlighted the following points:

- Population – Now and forecast
- Housing Implications
- Demographic details economic characteristics
- Natural environment
- Built environment

## **5.0 COUNCIL UPDATES**

### **5.1 OVERVIEW OF CORPORATE STRATEGIC PLAN AND PLANNING PROCESS KATHERINE PARKER**

#### **DISCUSSION**

Kathryn Parker, discussed the Community Strategic Plan (CSP) and the priorities that have been identified.

## **6.0 STRATEGIC WORKSHOPS**

### **6.1 REVIEW OF COMMUNITY STRATEGIC PLAN ISSUES PAPER / PRIORITIES KATHRYN PARKER**

#### **DISCUSSION**

The group were asked to spend some time reviewing the posters and identify their 10 priorities across the region by adding a yellow dot to the issues that were important to them. If there was an issue not on the board they were to add it to a post-it-note.

The number of dots will be counted and taken on notice.

Mick Darda, Executive Manager Place Management then discussed results of workshop.

### **6.2 NORTHERN BEACHES CRIME STATISTICS – LEANNE MARTIN and DAVID DARCY**

#### **DISCUSSION**

Leanne Martin, Co-ordinator Community Safety, gave a presentation (Attachment 3) on crime statistics which highlighted the following:

- Non domestic assaults
- Offensive conduct
- Offensive language
- Liquor offences
- Resist arrest
- Other theft
- Steal from person

- Fraud
- Domestic violence
- Steal from motor vehicle
- Steal from retail store (shoplifting)

**NOTE:** *Leanne Martin advised these were low lever problems and the previous Safety Committee had worked together with the police for an improvement.*

**NOTE:** *Malcolm Pearce, Community Corrections, informed the Committee that crime statics reported are actually less than actual crime. He also advised that crimes are most indicative of late night entertainment precinct.*

David Darcy of Northern Beaches Police LAC gave a presentation (attachment 4) highlighting issues related to:

- Bus Safety
- Traffic Offences
- Domestic Violence
- Drugs and alcohol particularly noting the increased detection of amphetamine (ICE)
- Youth homelessness

## 7.0 GENERAL BUSINESS

### 7.1 Members contact details

#### DISCUSSION

J Hay, informed the group that the form in front of them was required to be signed to ensure all contact details were correct and that they had read and will adhere to the Code of Conduct.

Ray Mathieson, Manly Community Forum, asked if member's addresses could be circulated amongst the group?

Simon Moriarty, Resident – Curl Curl Ward, suggested that a drop box be set up for members to receive documentation.

M Darda, advised he would investigate the matter

### 7.2 Briefing – Re transport issues

Robert Tarabay, State Transit Authority, gave a short outline of the issues that need to be addressed and advised the changing dynamics of the Northern Beaches had not been relayed to Transport for NSW to include in their planning of bus services. This is evident with the high number of new construction projects and the demand for tradespeople to travel to the site and once completed for residence to travel to their work location. Additionally, the changes with lockout laws in Manly and the increased number of patrons utilising restaurants of an evening, have limited opportunity to travel home by public transport as services have not changed, potentially increasing the rate of drink driving on the Northern Beaches.

## SUMMARY OF ACTIONS

ACTION	RESPONSIBLE OFFICER
Members addresses to be circulated amongst members	Governance
Liaise with Police and Transport for NSW regarding potential improvements to afterhours public transport options across the Northern Beaches.	Executive Manager, Place Management

*The meeting concluded at 7.20pm*

*This is the final page of the Notes comprising 1 pages  
numbered 1 to 6 of the Community Safety Strategic Reference Group  
meeting held on 27 October 2016*

## Strategic Reference Group Protocols and Guidelines

### Overview

The new Strategic Reference Groups (SRGs) are aligned to the Local Representation Committee priorities and will help shape the draft Community Strategic Plan. The SRGs replace the role of the previous formal special interest committees across the former council areas

The SRGs will be a collective voice to provide input to the development of the vision and priorities for the draft Community Strategic Plan. The SRGs play an advisory role on Strategic Regional priorities.

The scope of each SRG is included in the separate Terms of Reference Document

Read the [Terms of Reference for the Strategic Reference Groups](#).

The Strategic Reference Groups are listed below.

Local Representation Group	Strategic Reference Groups (SRGs)
<b>Economic</b>	Affordable Housing Economic Development and Tourism Place Making
<b>Environment</b>	Natural Environment Waste and Recovery Management Sustainable Transport
<b>Social</b>	Art, Culture and Heritage Community Safety Inclusive Communities . Open Space and Recreation . Youth

### Membership

Council aims to include a diversity of members and ensure geographical coverage of the region. Each SRG will comprise of 10 people from [the five new wards](#), as well as five others from across the broader Council region. Their input will help develop the draft Community Strategic Plan.

### Meeting Schedule

The SRGs will meet twice during 2016 and three times in 2017.

The meetings will be on Thursday evenings from 5-7pm at venues including Manly and Dee Why. Meetings will run for no longer than two hours. Members can agree to extend the meeting by no more than thirty minutes if all members are in agreement.

### Role of the Chair

The chair will be the Implementation Advisory Group representative. Their role is to independently chair the meeting to time and agenda.

They will also work with the Executive Manager to agree items for the agenda that are of Regional Significance.

### Role of the Executive Manager

An Executive Manager has been allocated to each SRG. They will be supported by Research Officers, Governance and technical staff as required. They will finalise the agenda items and prepare reports and briefing notes. They will also approve meeting notes prior to circulation.

### Conduct at Meetings

Members should be familiar with and comply with the [Office of Local Government's Model Code of Conduct for Local Councils in NSW](#) as this applies to staff, Administrator and all members of committees.

### Attendance at Meetings

Apologies for attendance should be sent to the Governance contact and Chairperson as soon as possible prior to the meeting, either by telephone or email.

Please inform your Governance contact if you require any assistance accessing the meeting venue or have any dietary requirements.

### Quorum

The meeting quorum is a majority of SRG members (minus any vacancies).  
If the Chair is unable to attend, they will nominate a Local Representation Committee member to chair the meeting.

If there are no members of the Local Representation Committee are in attendance the Executive Manager will chair the meeting.

### Agenda

The meeting agenda and reports will be forwarded at least 5 working days prior to the meeting.

Members may suggest items for inclusion on the agenda. Proposed items are to be forwarded to the Governance contact, Chair and Executive Manager at least 10 working days prior to the meeting.

Items on the agenda will be agreed by the Chair and Executive Manager and should be of Strategic Regional significance.

### Meeting notes

Meeting notes will be taken at SRG meetings. The notes of the SRG meetings will be circulated to the relevant Local Representation Committees for consideration. Recommendations of the SRG that require allocation of Council resources will require approval by Council prior to proceeding. These matters will need to be supported by the LRC and will be reported to Council as part of the LRC meeting notes.

The SRG notes will also be published on the Northern Beaches website.



An aerial photograph of a crowded beach. The top half of the image shows a wide expanse of golden sand filled with hundreds of people, many of whom are sitting or lying down. The bottom half of the image shows the ocean with clear, turquoise water and white foam from waves breaking onto the shore. People are also seen swimming and wading in the water. A large, semi-transparent purple rectangle is overlaid on the right side of the image, containing the council's name and website.

# NORTHERN BEACHES COUNCIL

[northernbeaches.nsw.gov.au](http://northernbeaches.nsw.gov.au)

# Strategic Reference Group – Meeting 2

MEETING AGENDA	
Welcome and purpose of meeting	Chair
Overview of role	Research Officer
Profile of area presentation	Research Officer
Overview of CSP Process	Research Officer
SRG Member's presentations	Executive Manager and SRG Members
Review of Issues Paper – anything missing	Research Officer
SRG priority setting	Research Officer
Meeting close	All

# Overview of Role



# Strategic Reference Group - Protocols and Guidelines

- Role of Strategic Reference Group
- Meetings
- Agenda
- Meeting Notes

# Northern Beaches Profile information

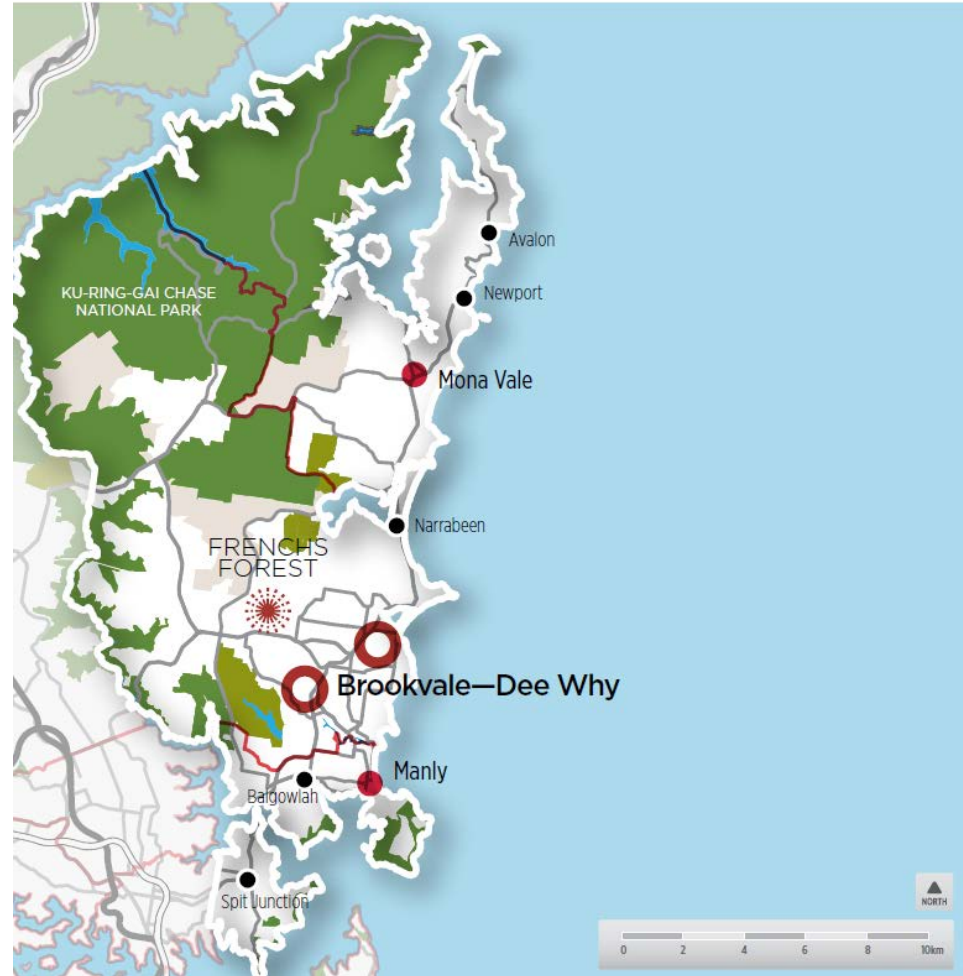
# Demographics: Who Are We?

- Why are demographics important?
  - Assist planning, directions, input to community now and in transition to new council
  - Vital connection role – make the region work together in its new organisational role;
  - Marketing, communications and community connections = your important role
- Variety of data sources to provide comprehensive snapshot:
  - ABS,
  - SHOROC,
  - State & Agency studies & plans
- Context:
  - Greater Sydney Commission;
  - new regional council;
  - Expectations from DP&C;
  - 2012 – Regional Action Plan



# Northern Beaches Region of Sydney

- Regional overview:
  - Coastal fringe to Pacific Ocean
  - Aging population
  - Residents have higher level of income than NSW average
  - Strong sense of community – high levels of volunteering
  - Competitive advantages
  - Key industries property & business services, hospitality, international education, recreation and tourism
  - Highly skilled & competitive workforce with significant knowledge base
  - Well connected to Sydney and central coast
  - High quality Vocational Education & Training, English Language, and TAFE education





# Population: Now & Forecast (NSW Department of Planning, 2016)

## Northern Beaches Region

<b>Population (2016)</b>	<b>263,700</b>
<b>Forecast 2031 (NSW DOP, 2016)</b>	<b>287,650</b>
<b>Population Increase 2016-2031 *revised, 2016</b>	<b>23,950*</b>
<b>% Increase *revised 2016</b>	<b>9.0%*</b>
<b>Average annual growth</b>	<b>0.5-0.7%</b>



# Housing Implications...

## Northern Beaches Region

<b>Total Households (2016)</b>	<b>99,350</b>
<b>Total Households (2031) NSW DOP 2016</b>	<b>110,300*</b>
<b>Households Increase (2016- 2031)</b>	<b>10,950, or 11%</b>

# Highlights: social, income, housing

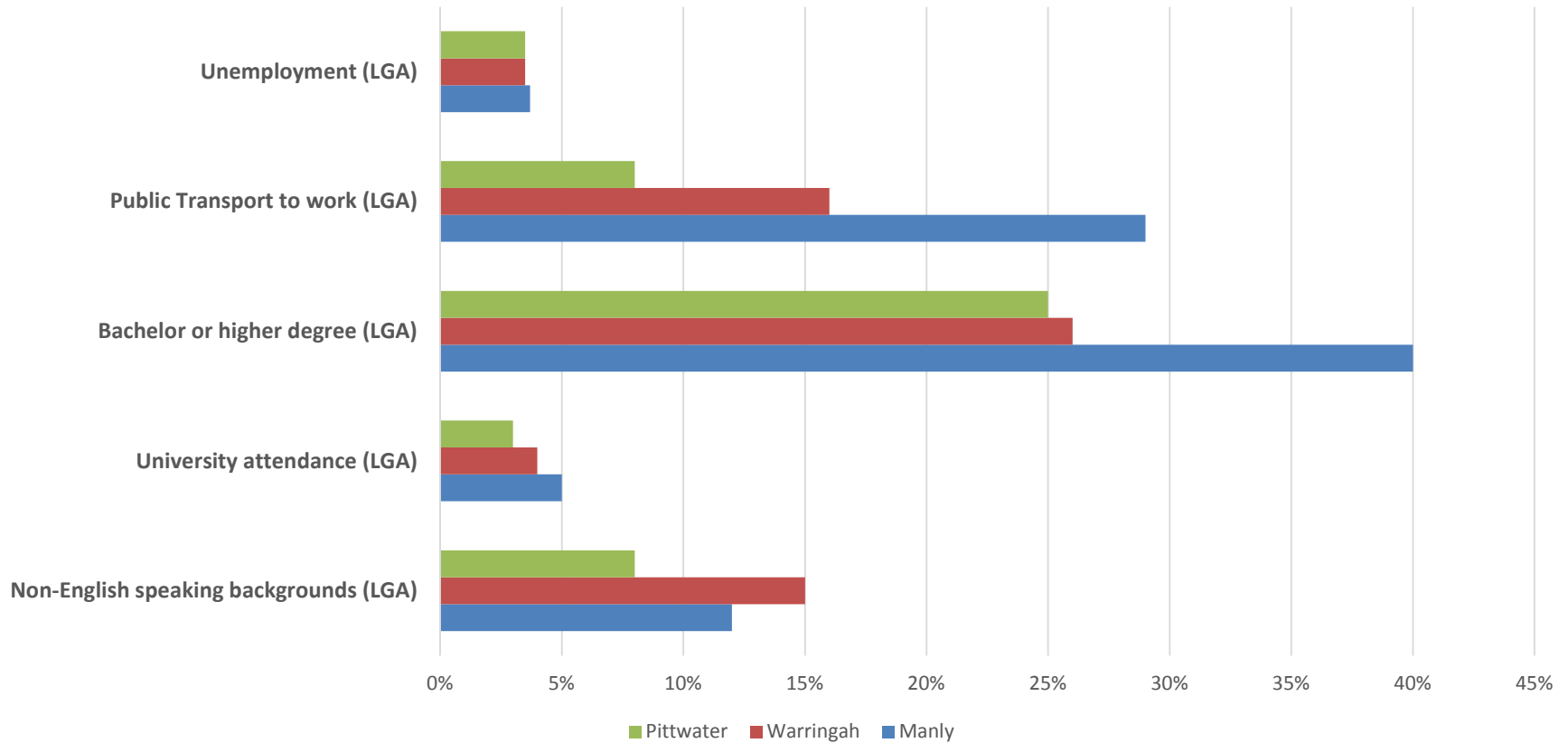
	Northern Beaches Region	Greater Sydney
Median Age	<b>39</b>	<b>36</b>
Median Weekly household income (LGA)	<b>\$1,921</b>	<b>\$1447</b>
Couples with children (LGA)*	<b>35%</b>	<b>35%</b>
Medium & high density housing (LGA)*	<b>43%</b>	<b>40%</b>
Households with a mortgage (LGA)*	<b>33%</b>	<b>33%</b>
Households renting (LGA)	<b>26%</b>	<b>30%</b>

# Who are we? Community Profile

	Northern Beaches	Greater Sydney
NESB	11.6%	26%
Bachelor or higher Degree	30.3%	24%
Vocational	15%	15%
Public Transport (to work)	17.6%	20%
Unemployment	3.5%	5.6%

# Demographic Detail

## Work, Travel, Skills & Culture



# Economic characteristics

## Northern Beaches region

<b>Gross Regional Product</b>	<b>\$13.35B</b>
<b>Local Jobs</b>	<b>95,131</b>
<b>Local Businesses</b>	<b>30,415</b>
<b>Employed Residents</b>	<b>141,200</b>
<b>Containment Rates (% of residents employed locally)</b>	<b>49%</b>
<b>Largest Industries</b>	<b>Health Care &amp; Social Assistance Retail Construction</b>

# Natural Environment:

- High valued by residents;
- Beach Quality:
  - 21 Beaches &
  - 20 Estuarine areas: Pittwater, Palm Beach to Shelley Beach:
  - Very good to good suitability (*2011-12, OE& H, State of Beaches*)
- Catchment health:
  - Hawkesbury river, Pittwater, Broken Bay, Narrabeen, Dee Why, Curl Curl and Manly Lagoons & Middle Harbour creek
    - *NSW Government State of the Catchments (SOC) Report 2010* - 62% of them meet indicators for desired conditions & pressure index ratings targets;
- Biodiversity;
  - 195 Endangered & Vulnerable species of scrubs, plants, marsupials, birds, bats, reptiles, amphibians (*Pittwater Part B, Office of Environment & Heritage, website*)

# Built Environment\*:

(\*SHOROC 2011, State of Environment Indicators):

- Transport & Mobility:
  - Public transport trips on increase, and private trips on decrease; travel times decreasing;
- Waste:
  - Decreased household domestic waste & total waste to landfill, per capita and over time;
- Residential & Business Energy Footprint:
  - via annual stationary energy consumption per capita decreasing;
- Council Energy Footprint:
  - reduction in energy use & emissions over time; increased percentage of renewable energy
- Water usage:
  - decreasing consumption of potable water over time
- Affordable housing = major issue for region
  - key public sector workers

# What does this tell us?

- Highly skilled & qualified local resident workforce;
- Strong economy: employed residents; small business;
- Growing: higher density housing & future demand;
- Aging population: workforce & population
- Environmental constraints: beaches, lagoons, threatened species
- Opportunities / Challenges:
  - Harness collective social capital & skills,
  - Protecting environmental & heritage of region
  - Lobbying & working with key agencies to ensure improvements
  - Political role to ensure benefits & LT infrastructure improvements
  - Strong community building role to enable cohesive region;
  - Enable future community & business partnerships;
  - Harness future opportunities & minimise challenges; and
  - Global Sydney links with transport, infrastructure & residents;

Any more?



# **Overview:**

## Community Strategic Plan (CSP) Process and Integrated Planning and Reporting (IP&R)



# COMMUNITY STRATEGIC PLAN

<b>VISION &amp; PRIORITIES</b>	<b>Sep - Nov 2016</b> Community engagement: Issues Paper
<b>STRATEGIES</b>	<b>Mar - Apr 2017</b> Community engagement: Discussion Paper Staff and stakeholder engagement
<b>PUBLIC EXHIBITION DRAFT CSP</b>	<b>Jul - Aug 2017</b> Community engagement: Feedback on draft
<b>FINAL CSP ADOPTED</b>	<b>Adoption</b> post September 2017 by the newly elected Council



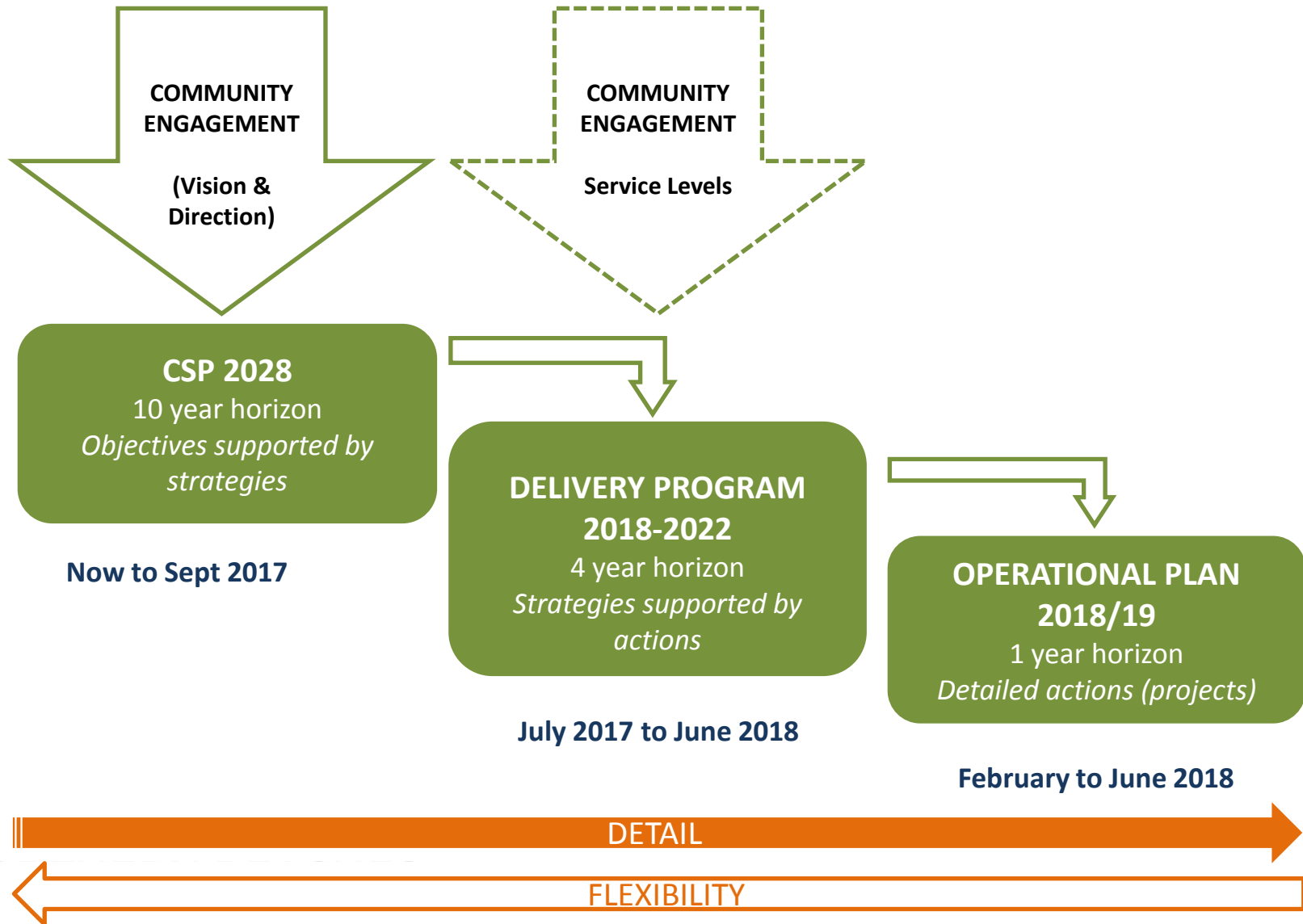
## Integrated Planning and reporting overview





# Corporate planning products and deliverables:

from community objectives to strategies and specific actions





## Affordable Housing example

### Community Strategic Plan

#### OBJECTIVE

Broad directional  
statements of aspiration

Provide a range of housing to  
meet the needs of people who  
live and work in the area

#### STRATEGY

Approach to achieve an  
objective

Expand the supply of affordable  
housing to meet the community's  
needs.

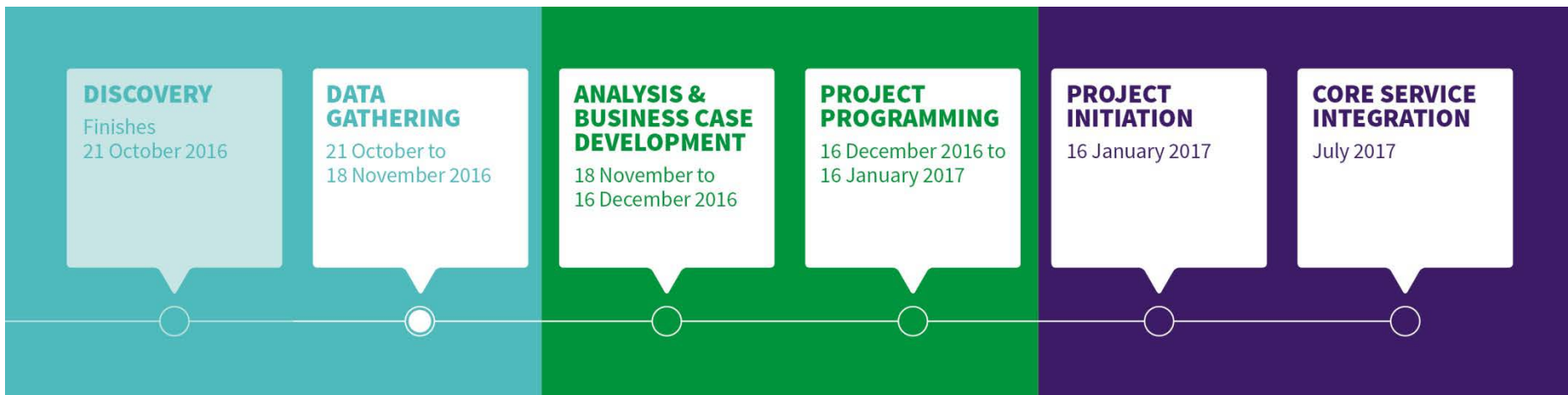
#### ACTION

Discrete and measurable  
pieces of work to achieve  
the objective

Amend planning policies &  
development controls to  
facilitate the supply of  
affordable housing.



# Draft Implementation Plan Northern Beaches Council



[Click to view Draft Plan](#)



# Working on the outcomes of the Strategic Reference Group workshop



# Workshop – Challenges & Issues

*From the perspective of your SRG is any thing missing?*





# Workshop – Priorities

*Looking at the Challenge/Issue what are your top ten priorities across the region?*

Meeting Close

Next SRG meeting

February 2017  
TBC

An aerial photograph of a crowded beach. The top half of the image shows a wide expanse of golden sand filled with hundreds of people, many of whom are sitting or lying down. The bottom half of the image shows the ocean with clear, turquoise water and white foam from waves breaking onto the shore. People are also seen swimming and wading in the water.

# NORTHERN BEACHES COUNCIL

[northernbeaches.nsw.gov.au](http://northernbeaches.nsw.gov.au)

**NORTHERN BEACHES COUNCIL COMMUNITY STRATEGIC REFERENCE  
GROUP**

**BOCSAR RECORDED CRIME STATISTICS 2015**

- Of the 17 Major crime categories Manly records higher in every category except for 3 areas.
- Pittwater is higher in Motor Vehicle Theft and Steal from Motor Vehicle
- Warringah is highest in Fraud

**Crimes most indicative of a late night entertainment precinct**

<b>Non Domestic Assaults</b>	<b>No. offences</b>	<b>Rate per 100,000 population</b>	<b>LGA Rank in NSW</b>
Manly	185	413.1	62
Warringah	177	177.1	128
Pittwater	120	189.5	123
Sydney SD		357.4	

<b>Offensive Conduct</b>	<b>No. offences</b>	<b>Rate per 100,000 population</b>	<b>LGA Rank in NSW</b>
Manly	151	337.2	5
Warringah	47	30.3	107
Pittwater	23	36.3	100

<b>Offensive Language</b>	<b>No. offences</b>	<b>Rate per 100,000 population</b>	<b>LGA Rank in NSW</b>
Manly	62	138.4	
Warringah	32	20.6	
Pittwater	15	23.7	

<b>Liquor Offences</b>	<b>No. offences</b>	<b>Rate per 100,000 population</b>	<b>LGA Rank in NSW</b>
Manly	170	379.6	
Warringah	75	48.3	
Pittwater	74	116.8	

<b>Resist Arrest</b>	<b>No. offences</b>	<b>Rate per 100,000 population</b>	<b>LGA Rank in NSW</b>
Manly	69	154.1	
Warringah	33	21.3	
Pittwater	25	39.5	

### Crimes indicative of a high tourist area

<b>Other Theft</b>	<b>No. offences</b>	<b>Rate per 100,000 population</b>	<b>LGA Rank in NSW</b>
Manly	273	609.6	12
Warringah	293	188.7	128
Pittwater	175	276.3	101
Sydney SD		371.9	

<b>Steal from Person</b>	<b>No. offences</b>	<b>Rate per 100,000 population</b>	<b>LGA Rank in NSW</b>
Manly	51	113.9	9
Warringah	56	36.1	59
Pittwater	17	26.8	74
Sydney SD		94.1	

### Other common offences in Northern Beaches

<b>Fraud</b>	<b>No. offences</b>	<b>Rate per 100,000 population</b>	<b>LGA Rank in NSW</b>
Manly	205	457.7	54
Warringah	791	509.4	42
Pittwater	317	500.5	44

<b>Domestic Violence</b>	<b>No. offences</b>	<b>Rate per 100,000 population</b>	<b>LGA Rank in NSW</b>
<b>Manly</b>	67	149.6	123
Warringah	188	121.1	132
Pittwater	91	143.7	127
Sydney		330.5	

<b>Steal from Motor Vehicle</b>	<b>No. offences</b>	<b>Rate per 100,000 population</b>	<b>LGA Rank in NSW</b>
Manly	158	352.8	87
Warringah	466	300.1	105
Pittwater	248	391.6	76

<b>Steal from Retail Store (shoplifting)</b>	<b>No. offences</b>	<b>Rate per 100,000 population</b>	<b>LGA Rank in NSW</b>
Manly	109	243.4	52
Warringah	362	233.1	57
Pittwater	66	104.2	103

Overview of crime and a comparison of the Northern Beaches areas. (handout)

From looking at the crime figures it is hopefully clearer why Manly has had a long term, active and operational interest in crime prevention and community safety.

The Community Safety role has been involved in tasks ranging from:

- development of a 3 year Crime Prevention Plan (fully funded by the Attorney Generals dept);
- late night community safety audits;
- hotspot audits
- graffiti and murals
- lighting, signage etc.
- late night transport initiatives (safe taxi ranks and late night bus routes)
- establish radio network between late night venues
- night time activations
- syringe disposal issues and drug
- alcohol free zones and alcohol prohibited areas
- awareness programs for English Language students and Year 12 school leavers
- rough sleepers and development of a Homeless Persons protocol
- review of liquor license applications and relevant DAs
- CPTED assessments of large developments
- Representation on Liquor Accord, Homelessness interagencies, Community Drug Action Team; Northern Beaches Domestic Violence committee
- CCTV
- Pending Federal govt. grant to remediate and activate three Manly laneways with murals, lighting and CCTV

Close working relationships with Police, Health, Corrections, Chamber of Commerce, late night licensees, NGO's especially MCC and MDECC etc.

BOCSAR official govt accessible to everyone and breaks down into LGAs

Where, when, victim type, contributing factors etc.

Worked in this field of community safety and crime prevention for a long time at a local, State, Federal level ranging from operational, police, media and research and policy. I've seen a lot of research down on communities and their fear of crime and concerns about community safety. So very often in Australia when people are drilled about crime in their neighbourhoods the most common responses are things like:

Racing cars, burnouts, young people drinking and yahooping in the street, graffiti or minor malicious damage incidents. It is very rarely murder and mayhem that people worry about when they lie in their beds. So in terms of policing it is very low level crime that worries the most people the most.

Of course there are shocking crimes that affect people terribly but by and large most people will never have this happen to them.

But unlike the serious criminal investigations which is very much the police domain, these low level annoying issues that affect neighbourhood amenity are the very types of issues that local government can have an impact in by looking at what, where and when and figuring out some solutions together with police.

If the group agrees I would like to present next month in more detail on some of the activities we have undertaken over the past few years and how this may encompass the wider Northern Beaches.



**NSW Police Force**

# Northern Beaches

## Community Safety Strategic Reference Group

Thursday 27<sup>th</sup> Oct 2016

Note: The date range for these statistics (unless otherwise stated) is 01/01/2016 – 30/09/2016



# BUS SAFE / PCA

There were 420 PCA's in NB LAC between Jan and Sep 2016. Of these, 319 live in NB LAC.

## Top 7 Suburbs:

Manly	34
Mona Vale	30
Dee Why	27
Brookvale	27
Collaroy	25
Newport	23
Avalon Beach	19

## Where They Live

Dee Why	37
Avalon Beach	20
Newport	20
Manly	16
Narrabeen	14
Collaroy	14
Freshwater	12



NSW Police Force

# TRAFFIC OFFENCES

Between Jan and Sep 2016 there were 1586 speeding tickets issued in Northern Beaches LAC.

## Top 5 Suburbs:

Balgowlah	352
Ingleside	169
Belrose	167
Mona Vale	115
Terrey Hills	101

## Target Area Offences:

Suburb	Street	TIN's
Ingleside	Mona Vale Rd	51
Ingleside	Walter Rd	46
Terrey Hills	Mccarrs Creek Rd	31
Ingleside	Chiltern Rd	14
Mona Vale	Barrenjoey Rd	13
Ingleside	Lane Cove Rd	12
Ku-Ring-Gai Chase	West Head Rd	2
Ingleside	Wattle Rd	1
Mona Vale	West Head Rd	1
Terrey Hills	West Head Rd	1
Ku-Ring-Gai Chase	Mccarrs Creek Rd	1
Bayview	Cabbage Tree Rd	1
Bayview	Pittwater Rd	1
Church Point	Mccarrs Creek Rd	1
Grand Total		176



NSW Police Force

# DOMESTIC VIOLENCE

- Proactive legal action rate Assault (D/V) 84% well above the State average of 66% (July-Sept 2016)
- 48 repeat D/V offenders and 42 repeat victims (6mth period from 1<sup>st</sup> April – 30<sup>th</sup> Sept 2016)
- 29 Legal Actions for the month of Sept 2016
  - 17 assault
  - 14 breach AVO
  - 1 judicial &
  - 8 malicious damage incidents

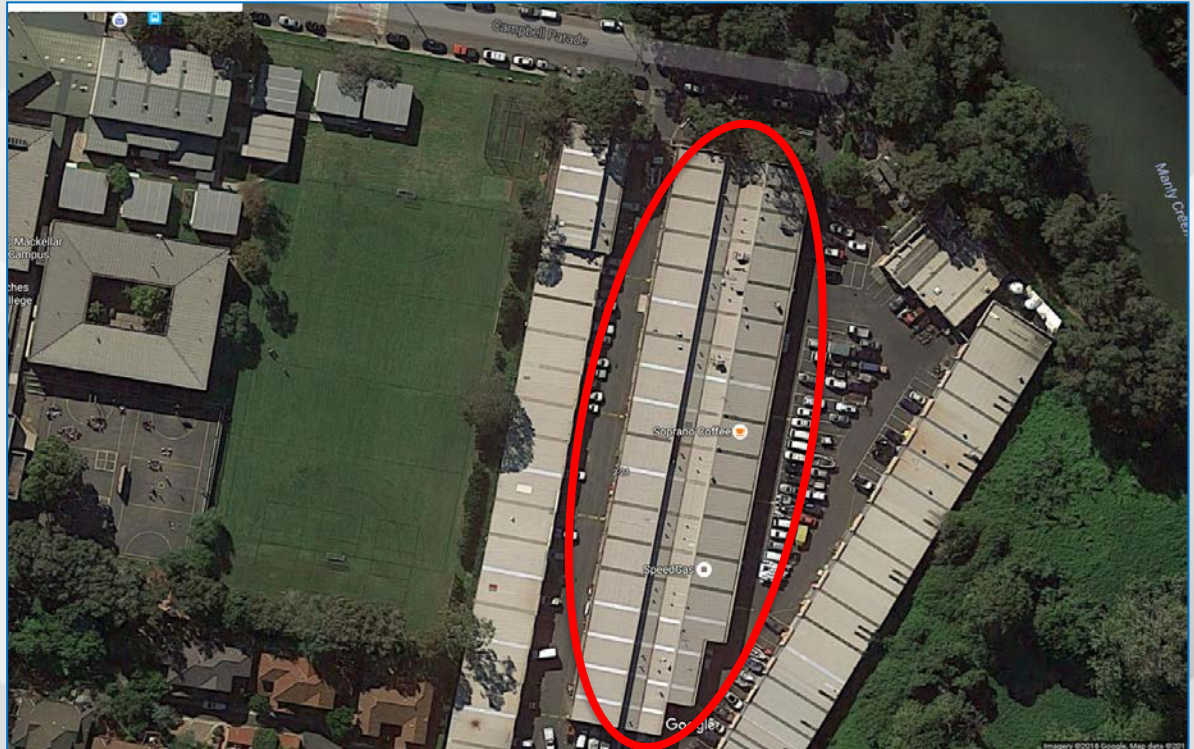


NSW Police Force

# DRUGS AND ALCOHOL

## Drug Supply From Commercial Premises

### Case Study – Industrial unit, Campbell Pde, Manly Vale



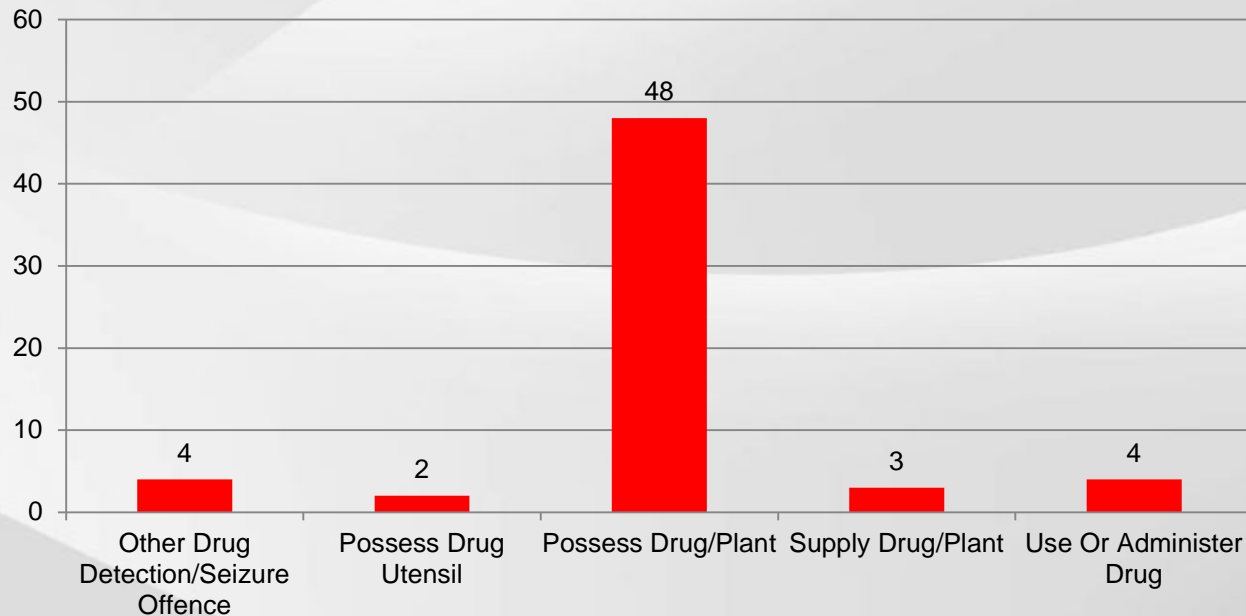
Source – RP Data & Google maps



# DRUGS AND ALCOHOL

## Minors and alcohol/drug use

### Drug Detections For Juveniles

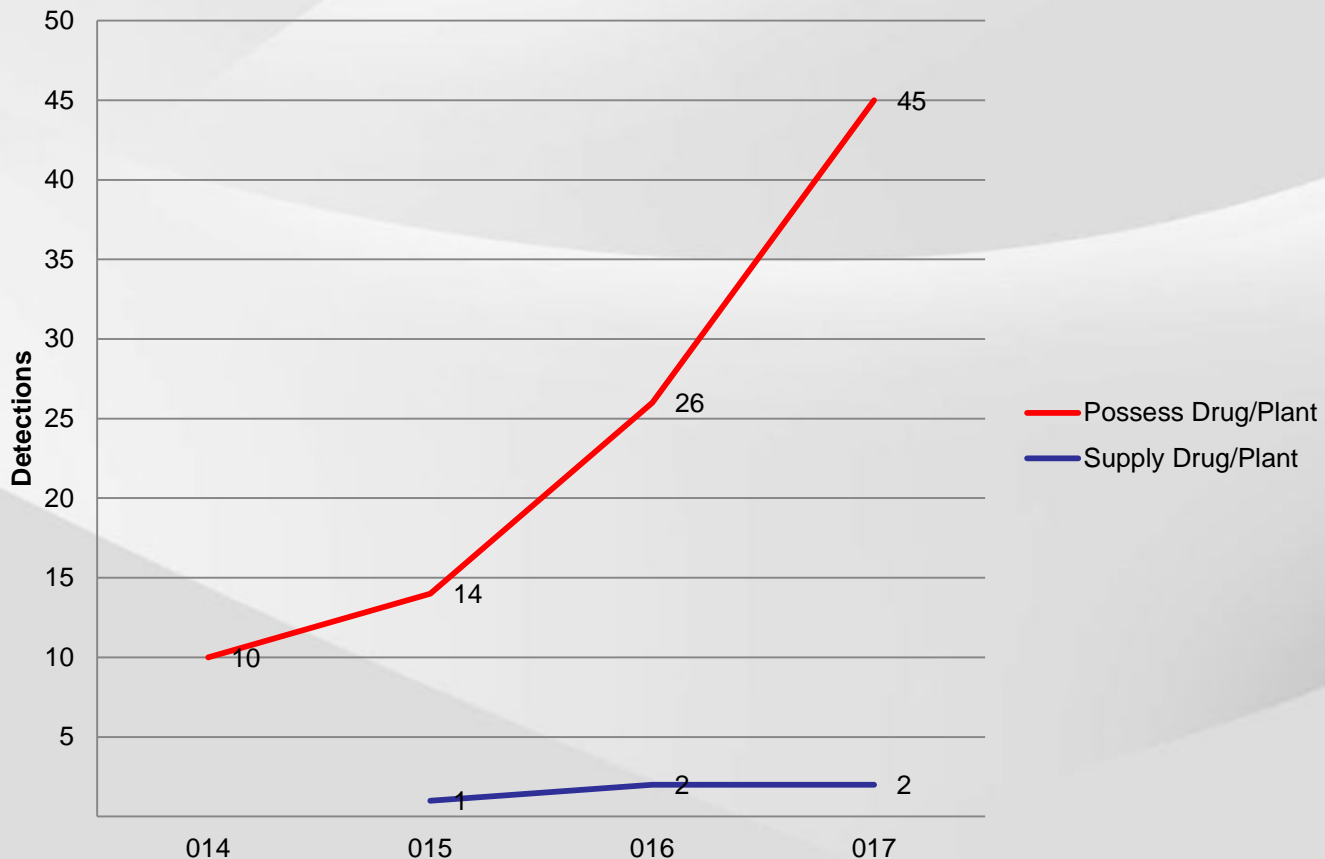


Also 25 juveniles detected as intoxicated persons and 17 licensing offences by minors.

# DRUGS AND ALCOHOL

## Minors and alcohol/drug use

**Juvenile Drug Detection By Age**

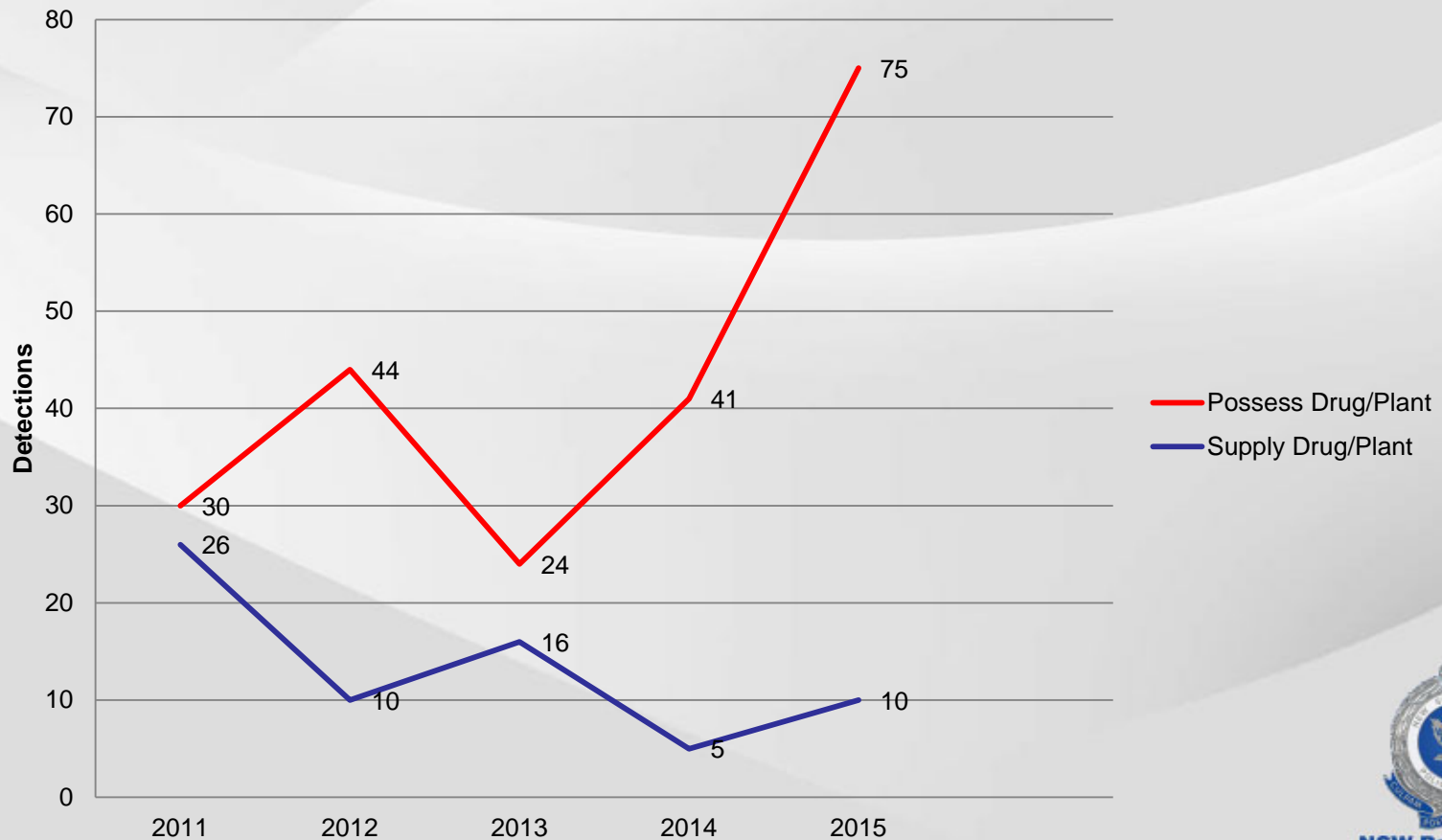


NSW Police Force

# DRUGS AND ALCOHOL

## Amphetamine (ICE) Detections

### Amphetamine Detections Possess & Supply

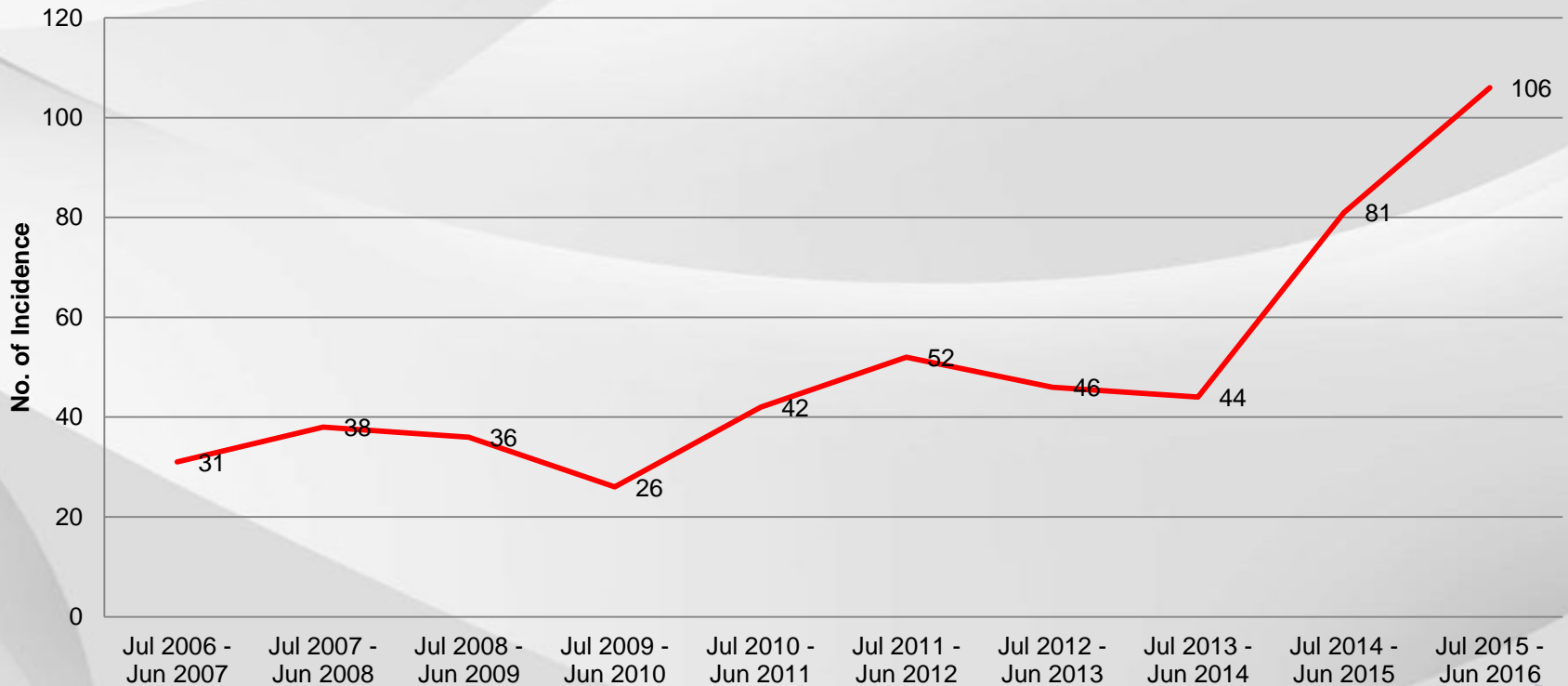


NSW Police Force

# DRUGS AND ALCOHOL

## Amphetamine (ICE) Detections

### Amphetamine Possess/Use for Northern Beaches



5 year trend & average annual % change - 19.5%  
10 year trend & average annual % change - 14.6%

Source: BOCSAR

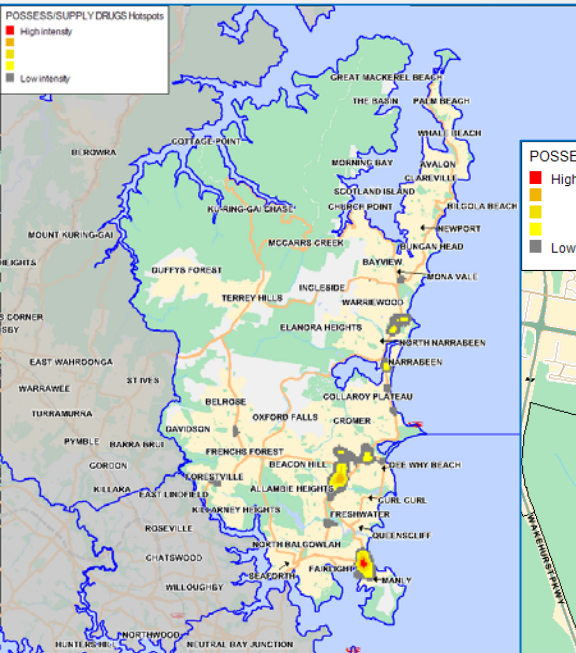


NSW Police Force



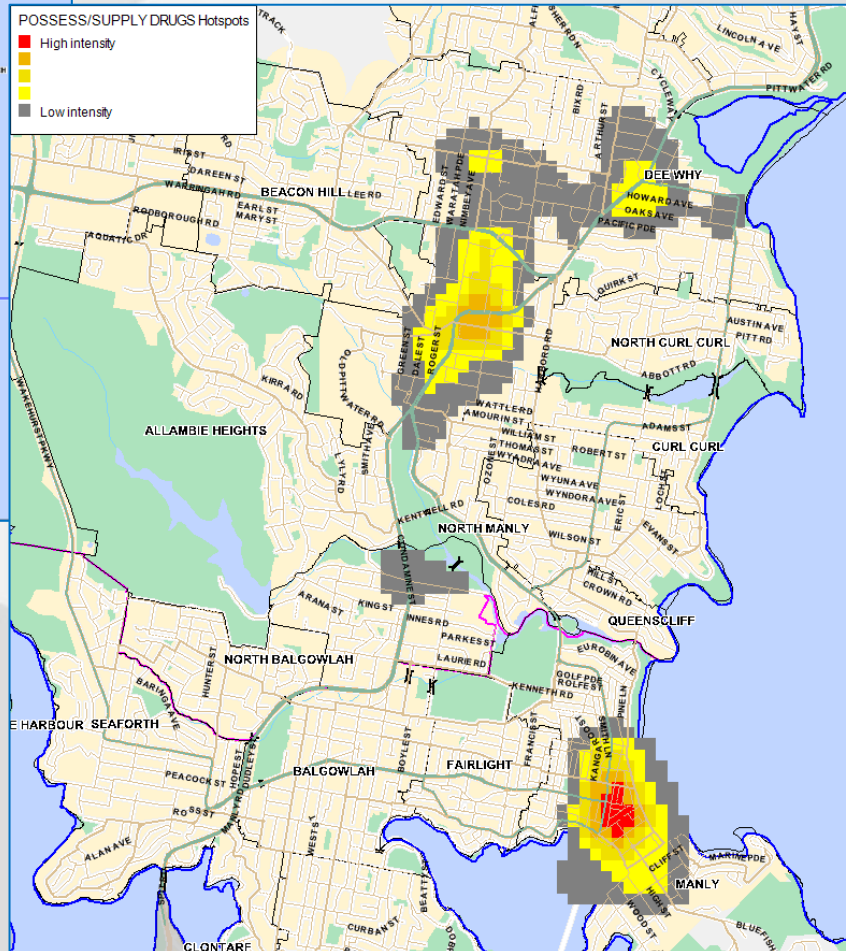
# DRUGS AND ALCOHOL

## Drug detections – supply/possess



Above: NB LAC  
Hotspot map

Below: Hotspot Zoom –  
Dee Why, Brookvale & Manly



SUBURB	Count
MANLY	40
BROOKVALE	31
DEE WHY	21
WARRIEWOOD	15
NARRABEEN	14
FRENCHS FOREST	12
MONA VALE	11
NORTH NARRABEEN	10
COLLARROY	8
KILLARNEY HEIGHTS	8
MANLY VALE	8
NARRAWEENA	7
AVALON BEACH	7
FORESTVILLE	6
FRESHWATER	5
BALGOWLAH	4
BEACON HILL	3
SEAFORTH	3
CLONTARF	3
BELROSE	3
NORTH MANLY	3
DAVIDSON	2
FAIRLIGHT	2
NEWPORT	2
OXFORD FALLS	2
WHALE BEACH	1
CROMER	1
CHURCH POINT	1
COLLARROY PLATEAU	1
ALLAMBIE HEIGHTS	1
KU-RING-GAI CHASE	1

SUBURB	Count
BROOKVALE	8
CROMER	4
MANLY	3
BEACON HILL	2
NARRAWEENA	2
FRENCHS FOREST	2
DEE WHY	1
NORTH CURL CURL	1
BELROSE	1
MONA VALE	1
WARRIEWOOD	1
KILLARNEY HEIGHTS	1
NARRABEEN	1

Drug Supply  
by suburb

Drug Possess  
by suburb

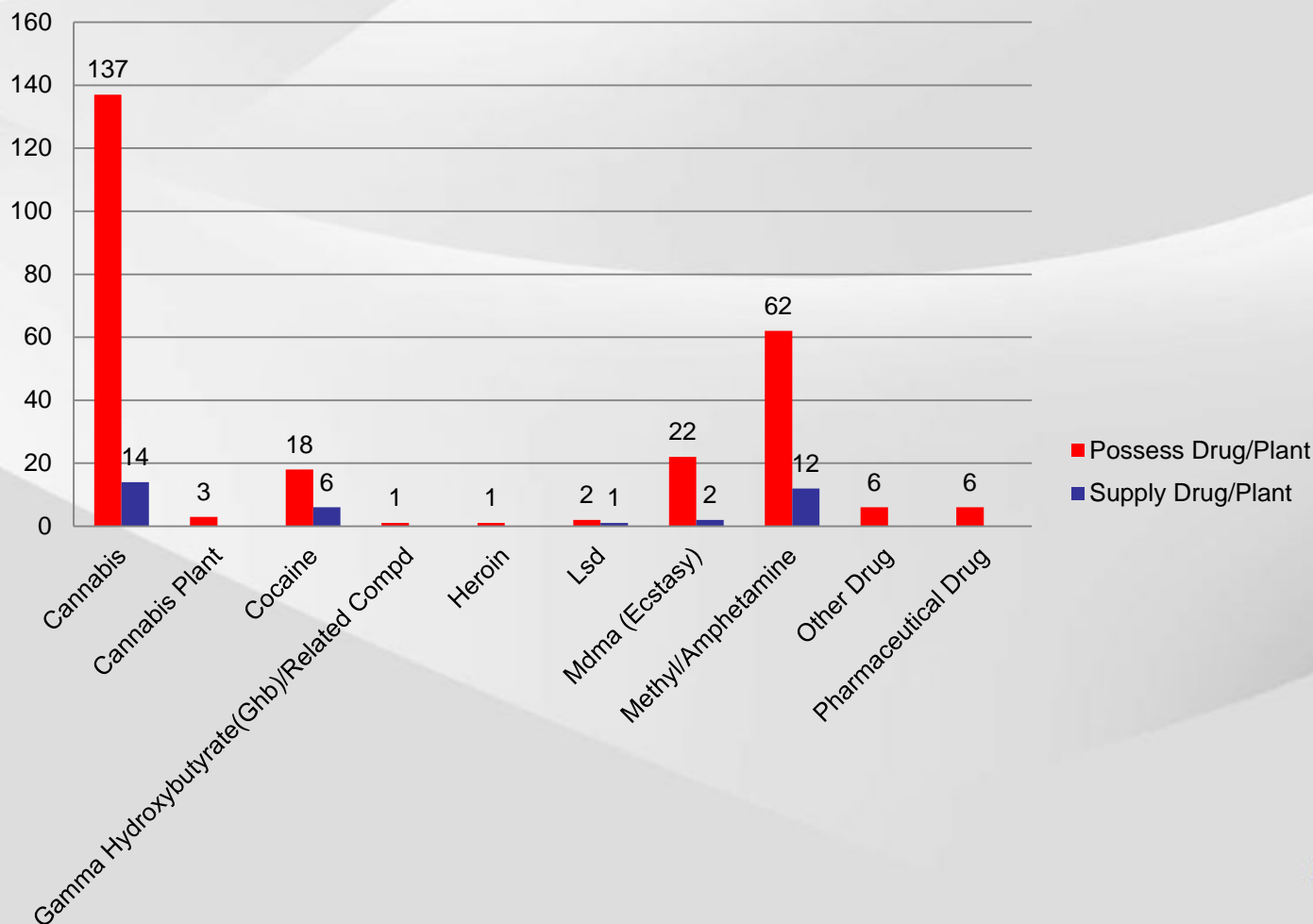


NSW Police Force

# DRUGS AND ALCOHOL

## Drug detections – supply/possess

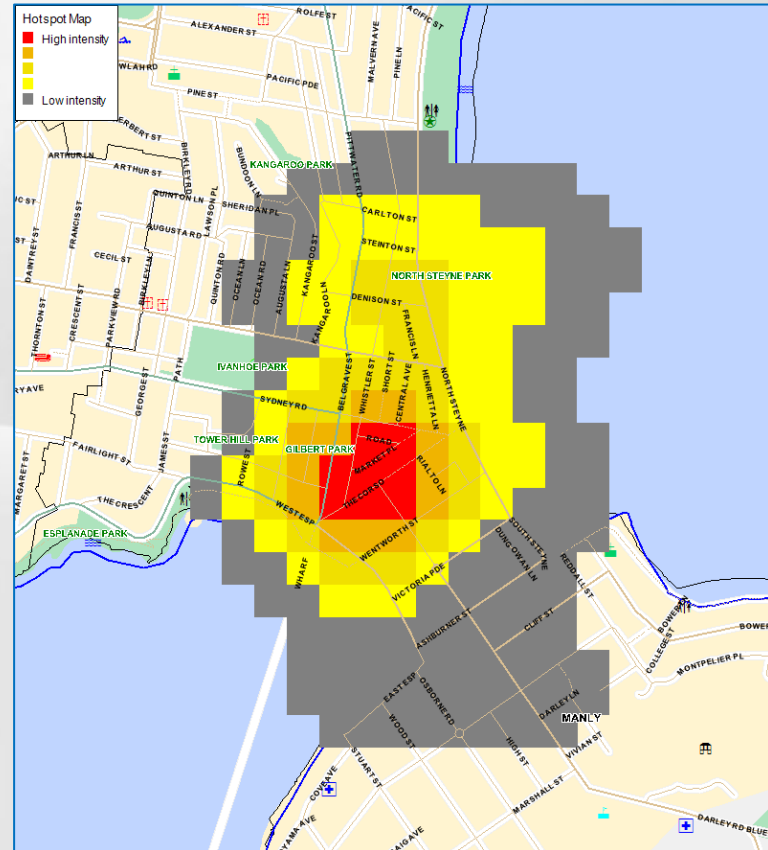
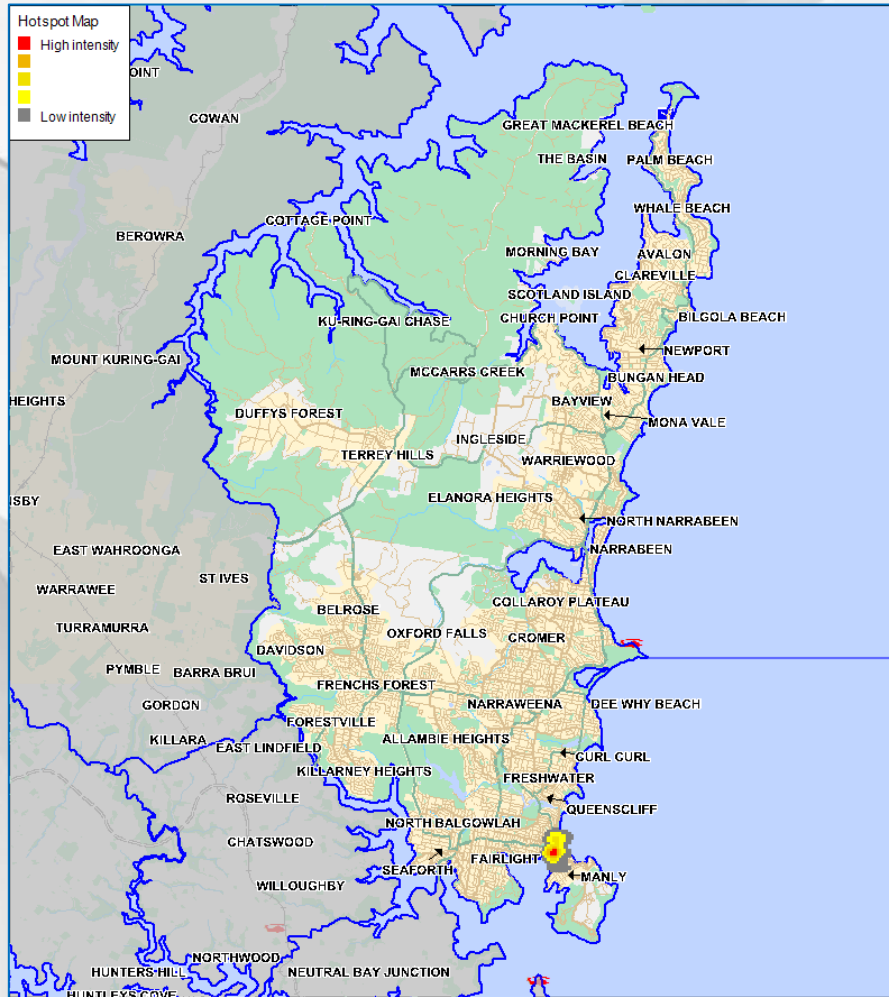
Drug Detections by Drug Type



NSW Police Force

# DRUGS AND ALCOHOL

## Alcohol related crime



ARC – Zoom (Manly)

ARC – Northern Beaches LAC

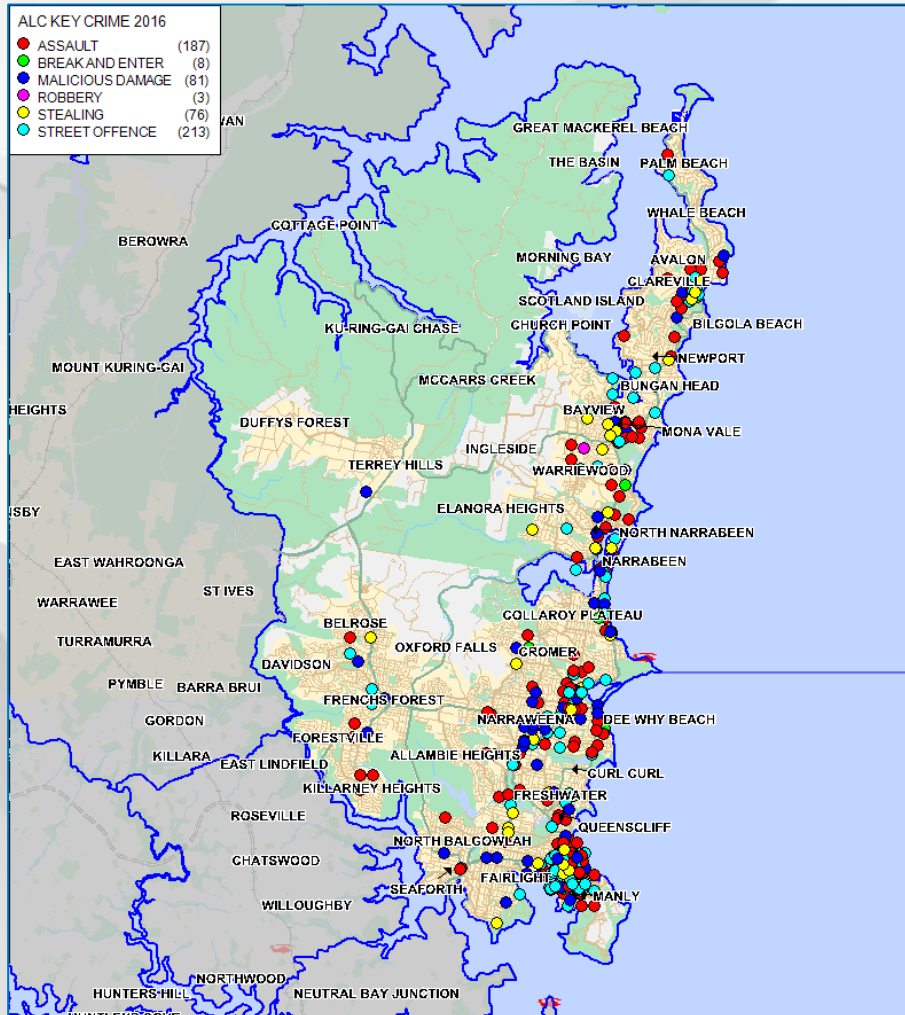


NSW Police Force



# DRUGS AND ALCOHOL

## Alcohol related crime



ARC by Incident category

SUBURB	Count
MANLY	303
DEE WHY	46
MONA VALE	31
BROOKVALE	26
AVALON BEACH	17
NARRABEEN	16
COLLAROY	14
NEWPORT	13
WARRIEWOOD	12
MANLY VALE	11
FRESHWATER	9
NORTH NARRABEEN	9
FAIRLIGHT	6
NORTH CURL CURL	6
BALGOWLAH	5
NARRAWEENA	5
BELROSE	4
CROMER	4
NORTH MANLY	4
FRENCHS FOREST	3
SEAFORTH	3
KILLARNEY HEIGHTS	3
FORESTVILLE	3
TERREY HILLS	3
ALLAMBIE HEIGHTS	3
PALM BEACH	2
BEACON HILL	2
CLONTARF	1
ELANORA HEIGHTS	1
NORTH BALGOWLAH	1
BALGOWLAH HEIGHTS	1
QUEENSCLIFF	1

ARC by suburb

PREMISE_TYPE	Count
OUTDOOR/PUBLIC PLACE	258
LICENSED PREMISE	107
RESIDENTIAL	75
BUSINESS/COMMERCIAL	57
PUBLIC TRANSPORT	28
RELIGIOUS	15
LAW ENFORCEMENT	12
CARPARK	7
VEHICLE	4
RECREATION	3
HEALTH	1
EDUCATION	1

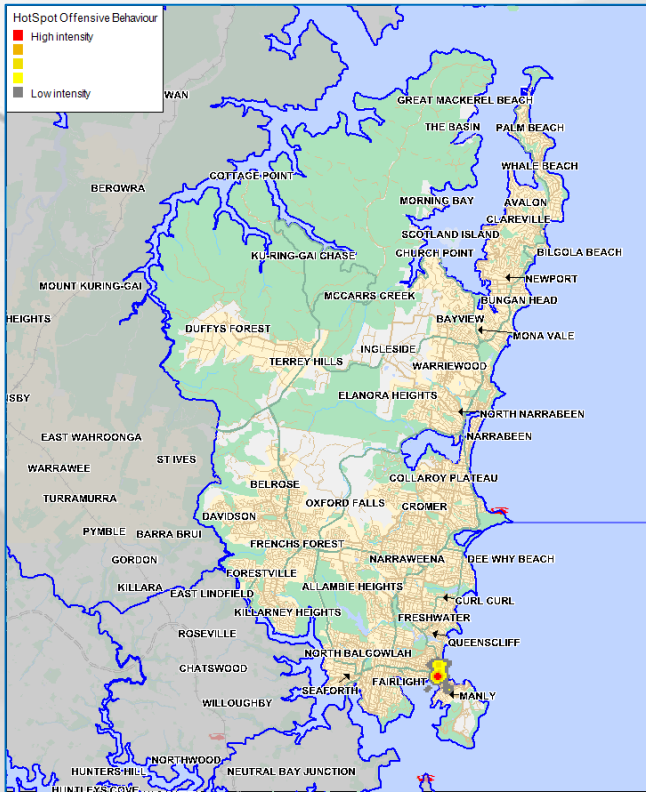
ARC by  
premise type



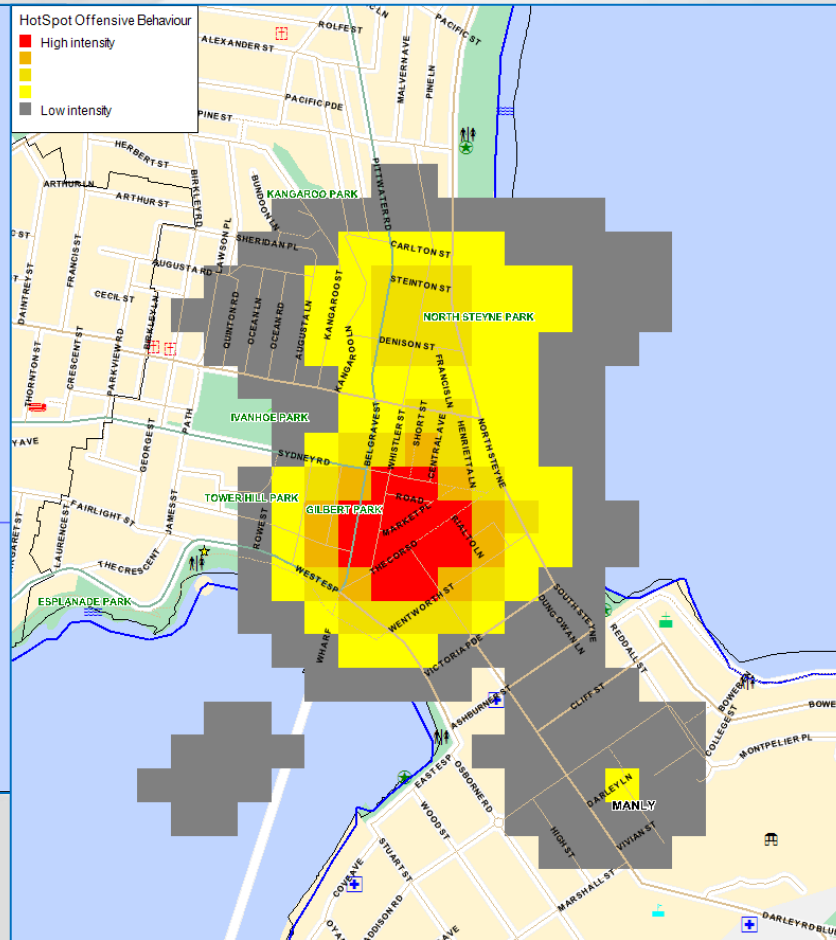
NSW Police Force

# DRUGS AND ALCOHOL

## Offensive behaviour



OFFENSIVE BEHAVIOUR – Northern Beaches LAC



OFFENSIVE BEHAVIOUR – Zoom (Manly)

SUBURB	Count
MANLY	113
DEE WHY	5
BROOKVALE	4
MONA VALE	4
WARRIEWOOD	3
AVALON BEACH	3
NEWPORT	3
BALGOWLAH	2
NARRABEEN	2
FRENCHS FOREST	2
NORTH NARRABEEN	1
FAIRLIGHT	1
FRESHWATER	1
NARRAWEENA	1
ALLAMBIE HEIGHTS	1
PALM BEACH	1
COLLAROY	1
TERREY HILLS	1
FORESTVILLE	1

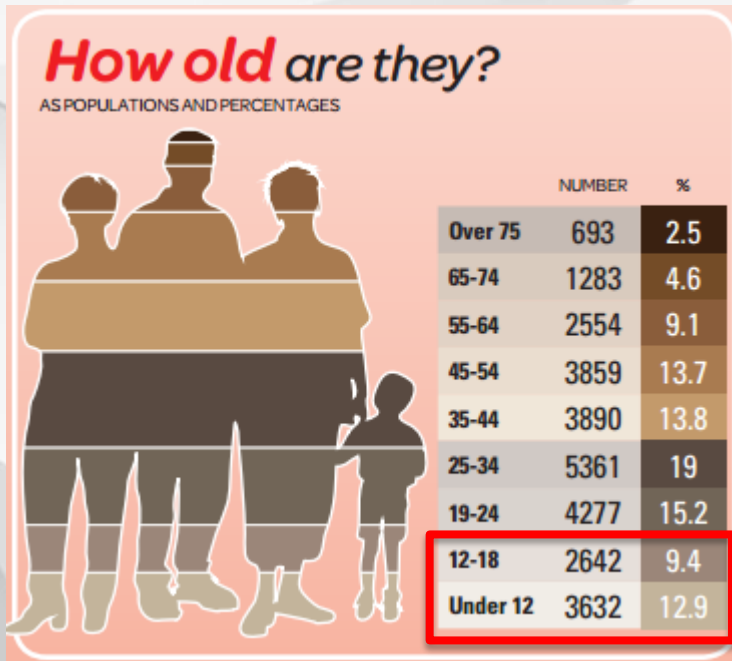
Off/behaviour  
by suburb



NSW Police Force

# YOUTH HOMELESSNESS

On any given night in Australia 1 in 200 people are homeless



Anecdotally, local police are seeing a rise in young persons who are 'couch surfing' after leaving their family home

Source: [www.homelessnessaustralia.org.au](http://www.homelessnessaustralia.org.au)

## Suggested projects for the NB Community Safety Strategic Reference Group

- 1) Enhancement of after hours bus services
- 2) Safety improvements to McCarrs Creek Rd
- 3) Improved team work between police and council – drug supply on commercial premises
- 4) Understanding youth homelessness
- 5) Enhancing resources to domestic violence
- 6) Improve drug and alcohol awareness
- 7) Maximising use of community volunteers in an emergency
- 8) Manly CCTV system and use of data fusion technology



NSW Police Force



**NSW Police Force**

