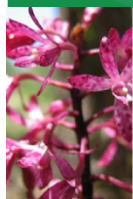


# Ingleside – Angus Onion Orchid (*Microtis angusii*)

Dr Steven Ward

eco  
logical  
AUSTRALIA

Document Set ID: 5165771  
Version: 1, Version Date: 07/07/2015



## Identification and Data Needed

- Small cryptic plant
- Genetic testing to confirm identification
- Number individuals needed for bio-certification calculations
- Need to survey when flowering



Document Set ID: 5165771  
Version: 1, Version Date: 07/07/2015



Photo from DECCW Recovery Plan



# Life Cycle



Month	Activity
Jan	Dormant
Feb	Dormant
March	Dormant
April	Starts to grow from tuber. Small leaves can appear
May	Likely to start producing a flowering stem (inflorescence)
June	Continues to develop inflorescence slowly
July	Continues to develop inflorescence
Aug	Continues to develop inflorescence and flowering
Sept	Flowering, starts to produce fruit
Oct	Flowering, fruit and seeding
Nov	Flowering, fruit and seeding
Dec	Starts to die off



**Peak Flowering**

Document Set ID: 5165771  
Version: 1, Version Date: 07/07/2015



# Status



- Endangered under both NSW and Commonwealth legislation
- Historically known to occur just to the west of the Ingleside Precinct (Warringah Council area)
- Only known to occur around Ingleside
- Recent new data from Roads and Maritime surveys – found within Ingleside Precinct

Document Set ID: 5165771  
Version: 1, Version Date: 07/07/2015





# Habitat Preferences



- Still many unknowns
- Known sites occur in disturbed areas
- Appears to prefer damper areas
- Needs mycorrhizal fungus
- Roads and Maritime results used to generate a habitat model

Document Set ID: 5165771  
Version: 1, Version Date: 07/07/2015

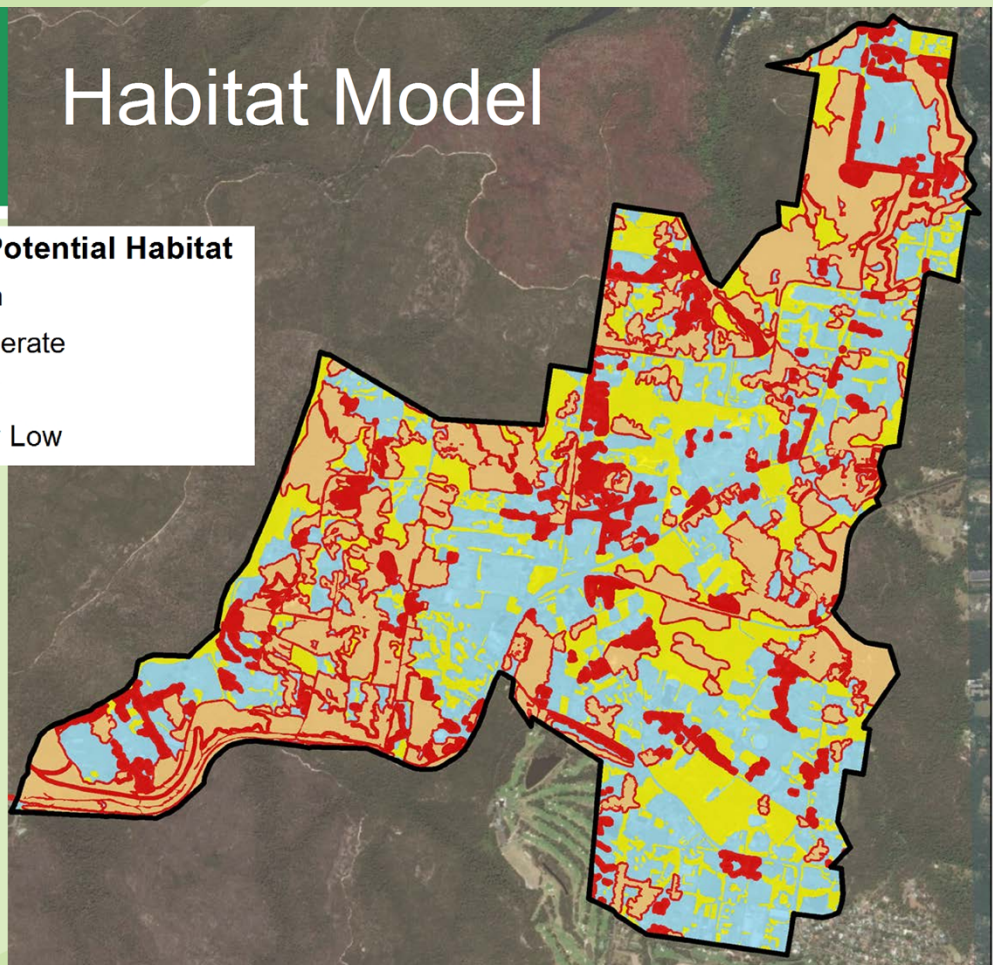


## Habitat Model



### Orchid Potential Habitat

- High
- Moderate
- Low
- Very Low



Document Set ID: 5165771  
Version: 1, Version Date: 07/07/2015



# Next Steps



- Undertake survey
  - Monitor known sites for survey timing
  - Within Ingleside (letter to residents)
  - In surrounding National Parks
- Allowance made for genetic testing by Royal Botanic Gardens
- Test the habitat model produced
- Further steps will depend on results

Document Set ID: 5165771  
Version: 1, Version Date: 07/07/2015