



## Update on Mona Vale Road Upgrades

1 July 2015

1 July 2015

- 1 -

*every journey matters*

### Presentation Overview

Transport  
Roads & Maritime  
Services

1. Overview of both Mona Vale Road Projects
2. Mona Vale Road East REF
3. Mona Vale West - Key Issues and Progress

1 July 2015

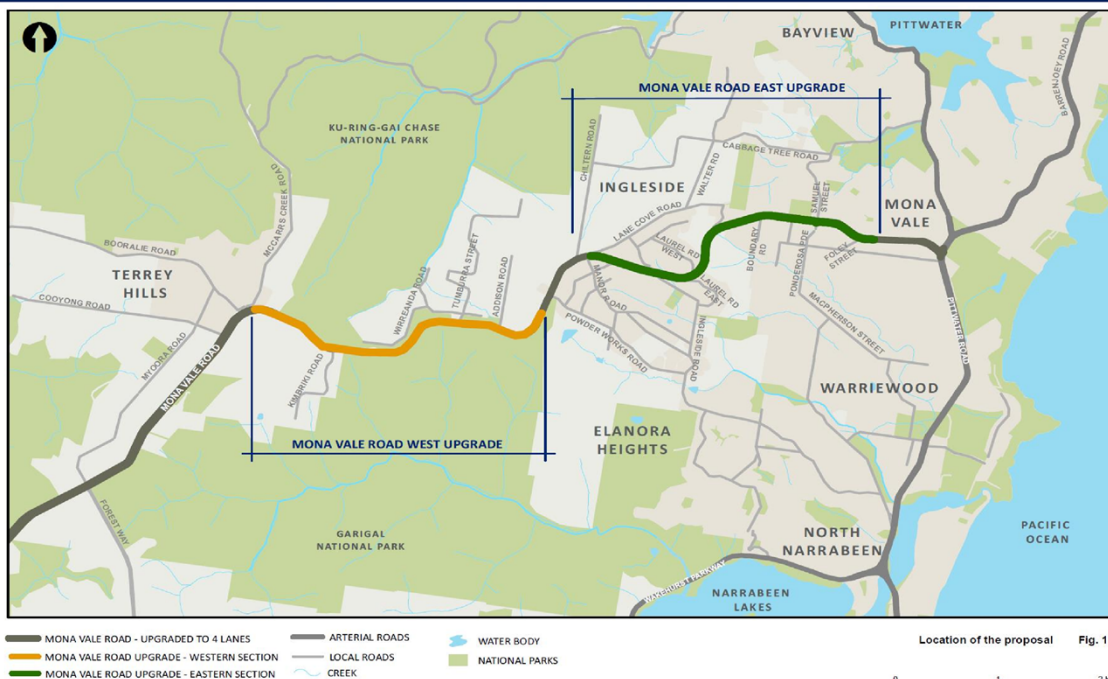
- 2 -

*every journey matters*

# Mona Vale Road Upgrades



Transport  
Roads & Maritime  
Services



1 July 2015

- 4 -

every journey matters

## Mona Vale Road East - Key Features



Transport  
Roads & Maritime  
Services



1 July 2015

- 6 -

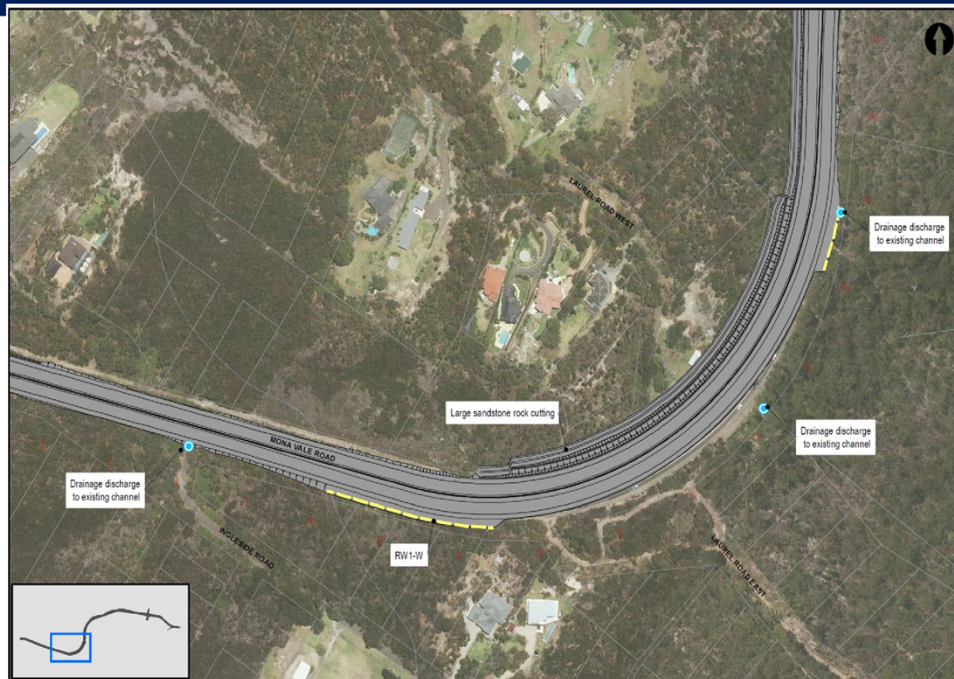
every journey matters



# Mona Vale Road East - Key Features



Transport  
Roads & Maritime  
Services



Key features of the proposal Fig. 3.3

1 July 2015

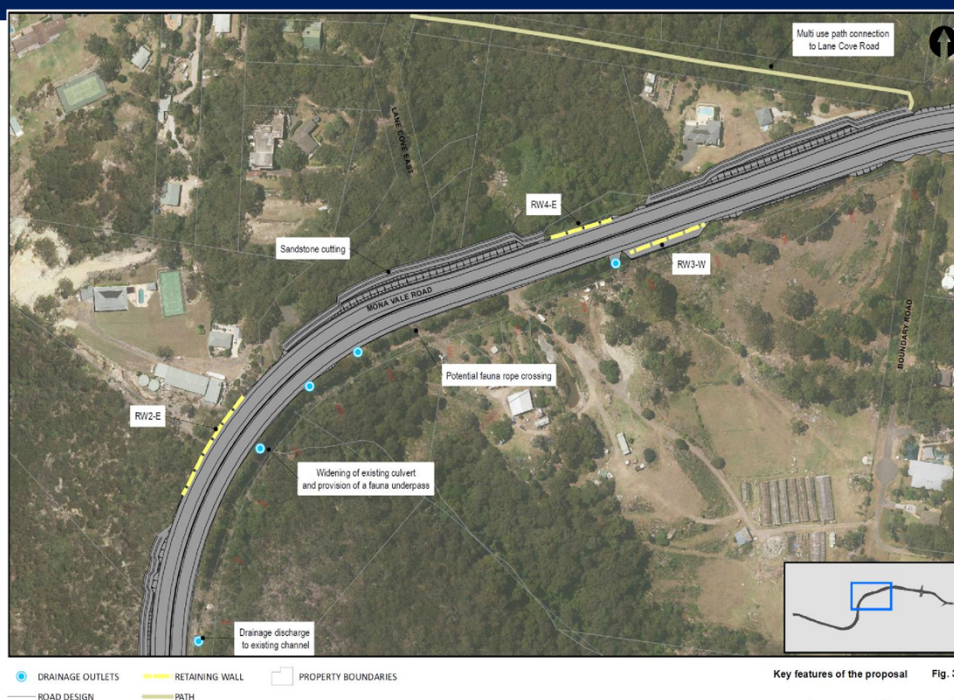
- 7 -

every journey matters

# Mona Vale Road East - Key Features



Transport  
Roads & Maritime  
Services



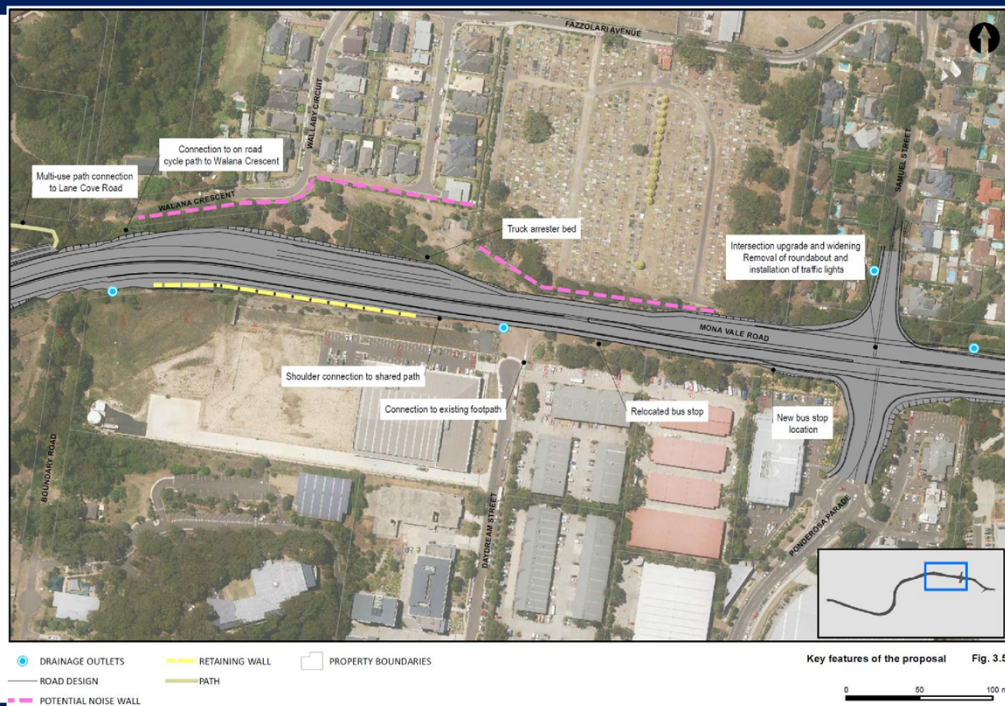
Key features of the proposal Fig. 3.4

1 July 2015

- 8 -

every journey matters





1 July 2015

- 9 -

every journey matters



1 July 2015

- 10 -

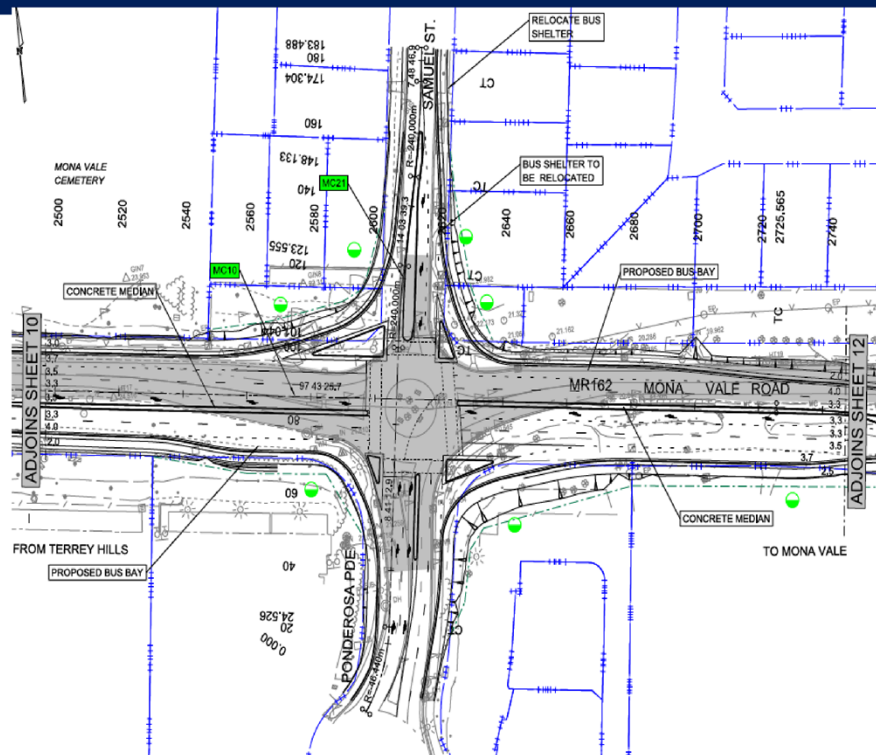
every journey matters



# Mona Vale Road East - Ponderosa/Samuel St Intersection



Transport  
Roads & Maritime  
Services



1 July 2015

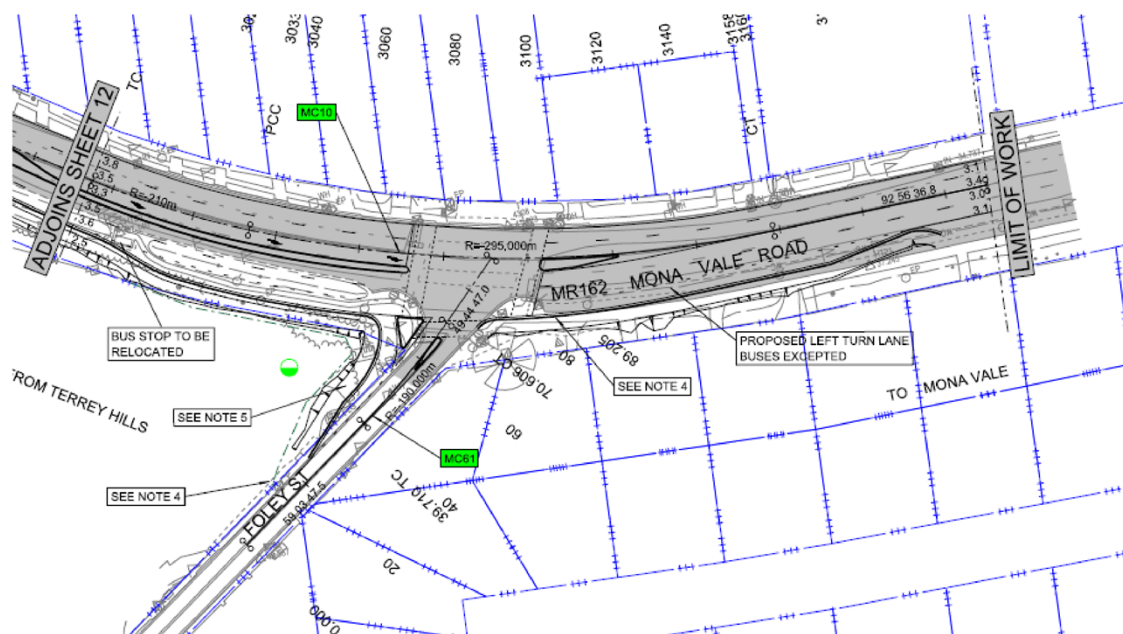
- 11 -

*every journey matters*

# Mona Vale Road East - Foley St Intersection



Transport  
Roads & Maritime  
Services



1 July 2015

- 12 -

*every journey matters*

# Review of Environmental Factors - Mona Vale Road East



Transport  
Roads & Maritime  
Services

- Draft REF for MVRE being finalised now
- Some Key issues

1 July 2015

- 13 -

every journey matters

# Review of Environmental Factors - Mona Vale Road East



Transport  
Roads & Maritime  
Services

## **Biodiversity**

- *Microtis angusii* – avoided through re-design
- Fauna connectivity
  - Narrabeen Creek culvert
  - Rope crossing
- Native vegetation removal – no threatened ecological communities impacted (State or Commonwealth). No Duffys Forest impacted

1 July 2015

- 14 -

every journey matters



# Review of Environmental Factors - Mona Vale Road East



Transport  
Roads & Maritime  
Services

## Heritage

- Aboriginal heritage
  - 3 sites identified within 200m
  - No direct impacts
  - Exclusion zones to be established
- Historic heritage
  - Cemetery Gates
  - No direct impacts
  - Vibration monitoring

1 July 2015

- 15 -

*every journey matters*

# Review of Environmental Factors - Mona Vale Road East



Transport  
Roads & Maritime  
Services

## Traffic

- Same consultant used as for Ingleside land release planning
- Modelling for “do nothing”, MVR east only upgrade, MVR east and west upgrade
- 2014 base year, 2019, 2021, 2031, 2036 modelled

1 July 2015

- 16 -

*every journey matters*

# Review of Environmental Factors - Mona Vale Road East



Transport  
Roads & Maritime  
Services

Travel Time Between Pittwater Rd and McCarrs Ck Rd

00:00	2036 AM Do Nothing	2036 AM EAST	2036 AM FULL	2036 AM WEST
95th	26:34.00	11:08.88	10:48.09	21:25.13
Max	35:08.50	13:30.00	12:48.00	26:06.00
Median				
Min	11:16.70	07:29.10	07:04.60	08:49.90
5th	13:15.07	08:06.75	07:41.63	10:49.44

Figure 5-2 2036 AM Westbound Travel Time Range

Source: AECOM, 2014

1 July 2015

- 17 -

every journey matters

## Review of Environmental Factors - Mona Vale Road East



Transport  
Roads & Maritime  
Services

### Noise

- Assessments for build and no build scenarios (MVR east and MVR west)
- Properties identified for noise treatment if no mitigation
- Possible mitigation measures:
  - Quieter pavement
  - Noise barriers
  - At property architectural treatments

1 July 2015

- 18 -

every journey matters

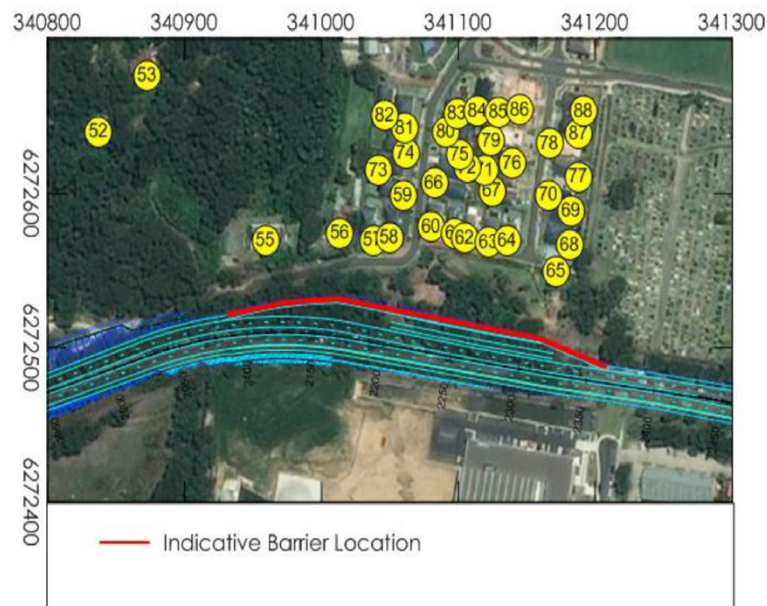


# Review of Environmental Factors - Mona Vale Road East



Transport  
Roads & Maritime  
Services

## INDICATIVE NOISE BARRIER LOCATION



1 July 2015

- 19 -

every journey matters

## Milestones - East



Transport  
Roads & Maritime  
Services

Milestone	Expected date / timeframe
100% concept design	Completed
REF display	Aug 2015
Environmental approval	Oct/ Nov 2015
Commence construction ( <i>dependent on funding / procurement strategy</i> )	2016/2017

1 July 2015

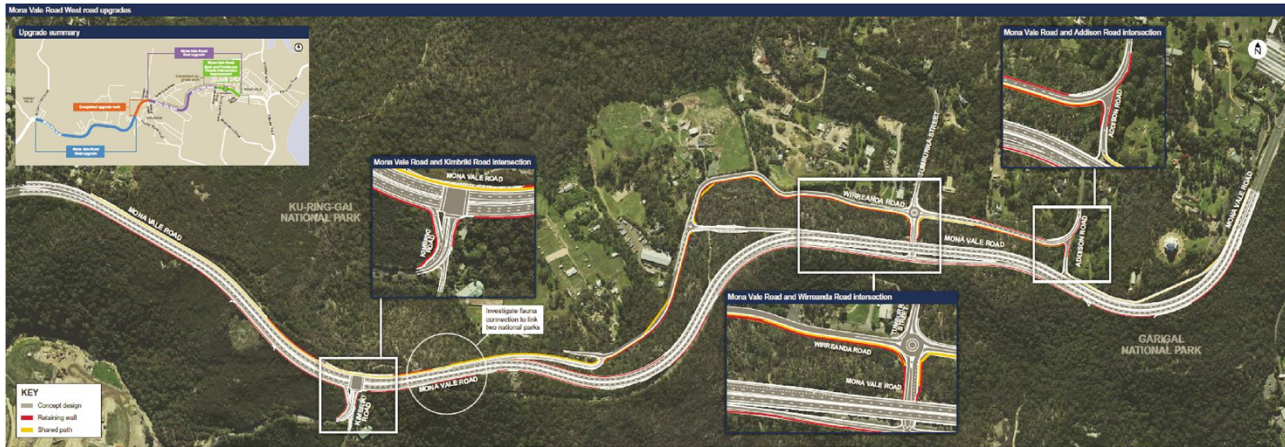
- 20 -

every journey matters

# Mona Vale Road West Key Features



Transport  
Roads & Maritime  
Services



1 July 2015

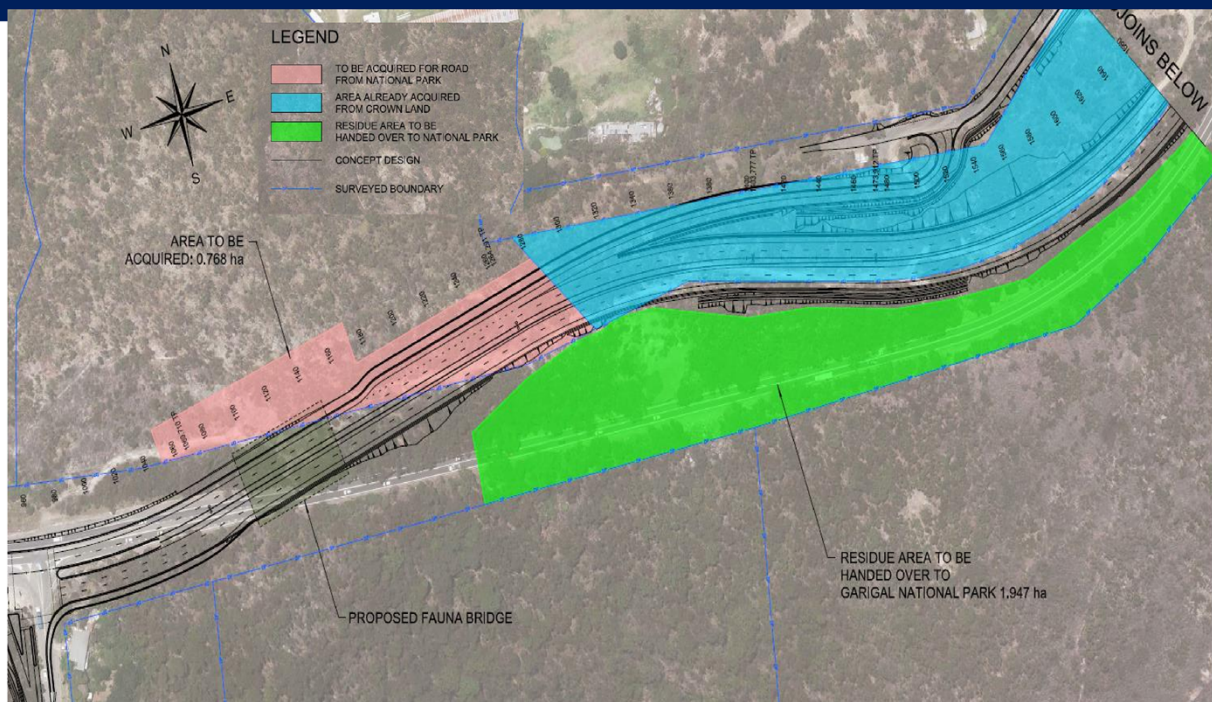
- 21 -

every journey matters

## National Park Revocation



Transport  
Roads & Maritime  
Services



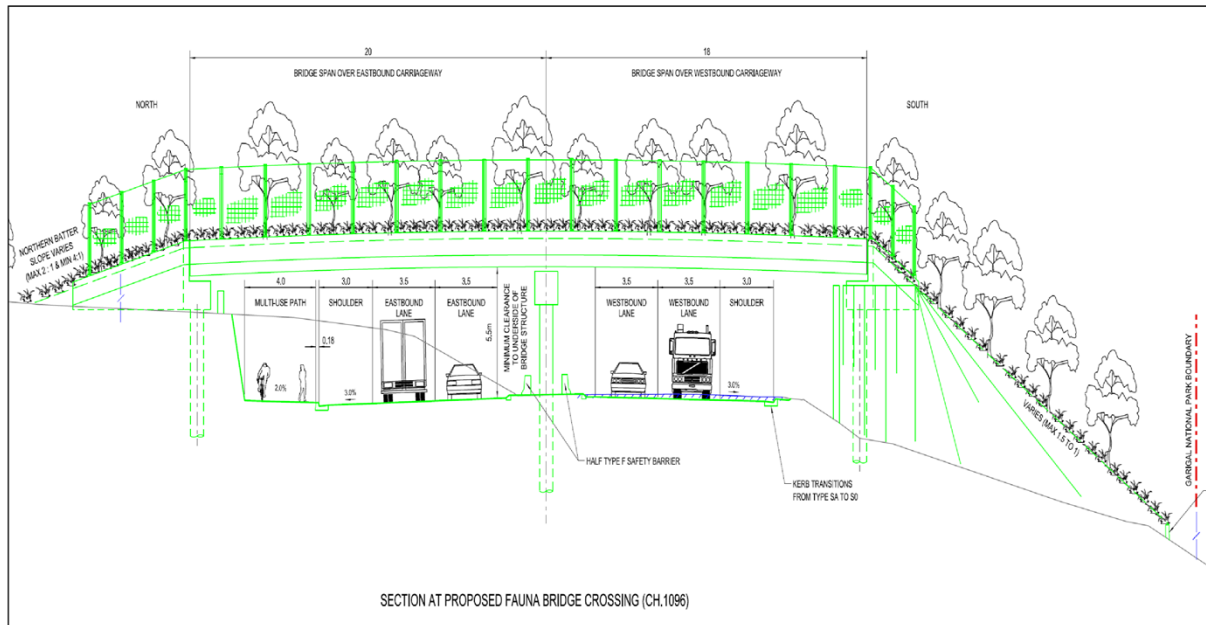
1 July 2015

- 23 -

every journey matters



# Early Concept Design Fauna Overpass – Cross Section



1 July 2015

- 24 -

every journey matters

## Example of a Fauna Overpass - Pacific Hwy, Bonville NSW



1 July 2015

- 25 -

every journey matters

## Project Status - West



Transport  
Roads & Maritime  
Services

- Concept Design 80% complete.
- Species Impact Statement – DGRs issued
- National Park Acquisition- OEH preparing Parliamentary Bill
- REF and SIS preparation commenced

1 July 2015

- 26 -

every journey matters

## Milestones - West



Transport  
Roads & Maritime  
Services

Milestone	Expected date / timeframe
Display preliminary concept design	Completed
REF and SIS display	May 2016
Environmental approval	Aug 2016
National Park revocation	Parliamentary Bill prepared by OEH
Commence construction ( <i>dependent on funding / procurement strategy</i> )	2017/18

1 July 2015

- 27 -

every journey matters