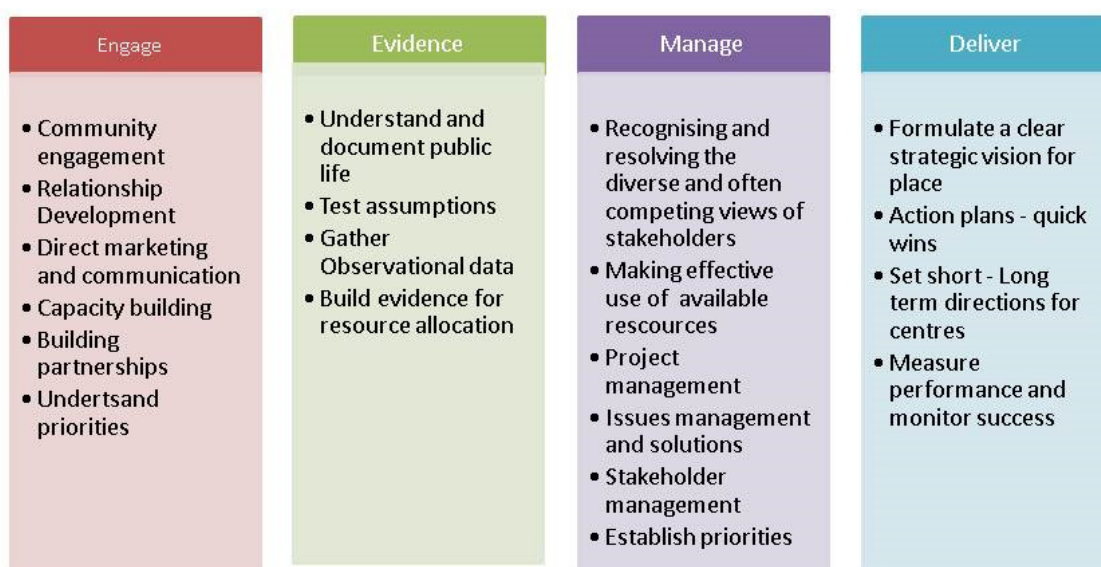


Place Management Team

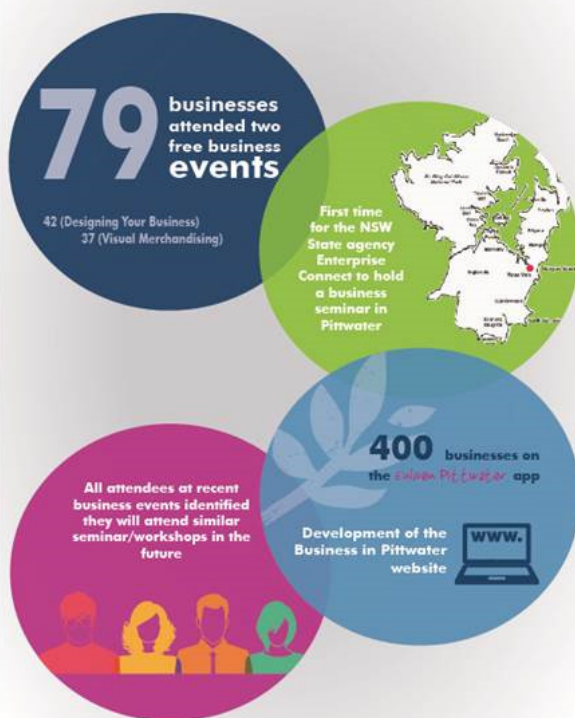


Framework for place management



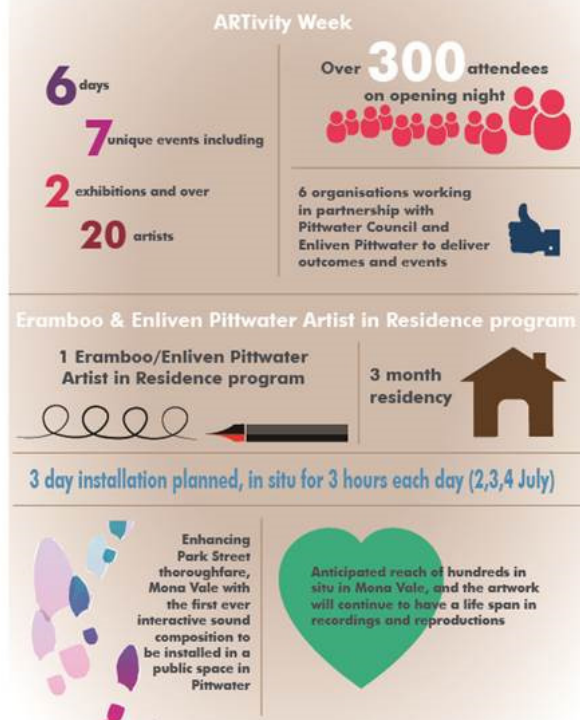
Methods & Outcomes

Supporting Local Business



Methods & Outcomes

The Arts



PITTPATER COUNCIL

Methods & Outcomes

Events & Activation



PITTPATER COUNCIL

Methods & Outcomes

Urban Design & Study of Public Life



 PITTWATER COUNCIL

Outcomes Area



 PITTWATER COUNCIL



Future Directions Enliven– June – Dec 2014

After a very successful first 12 months and having achieved over 30' quick wins' Enliven has more great initiatives for the second half of 2014 .

Immediate Priorities :

- Develop / build stronger relationships with Business Groups and Networks in Pittwater – facilitated by regular meetings with Chambers of commerce and conscious relationship development with large and small business locally.
- Supporting events that establish Pittwater as a destination and brand that is associated with high quality, interesting and stimulating events that reflect community interests and help stimulate the local economy .
- Promote events that can assist Pittwater develop 'place' through the Enliven app, via social media and enliven and Pittwater Council web sites



Some of the programs scheduled for the upcoming months include:

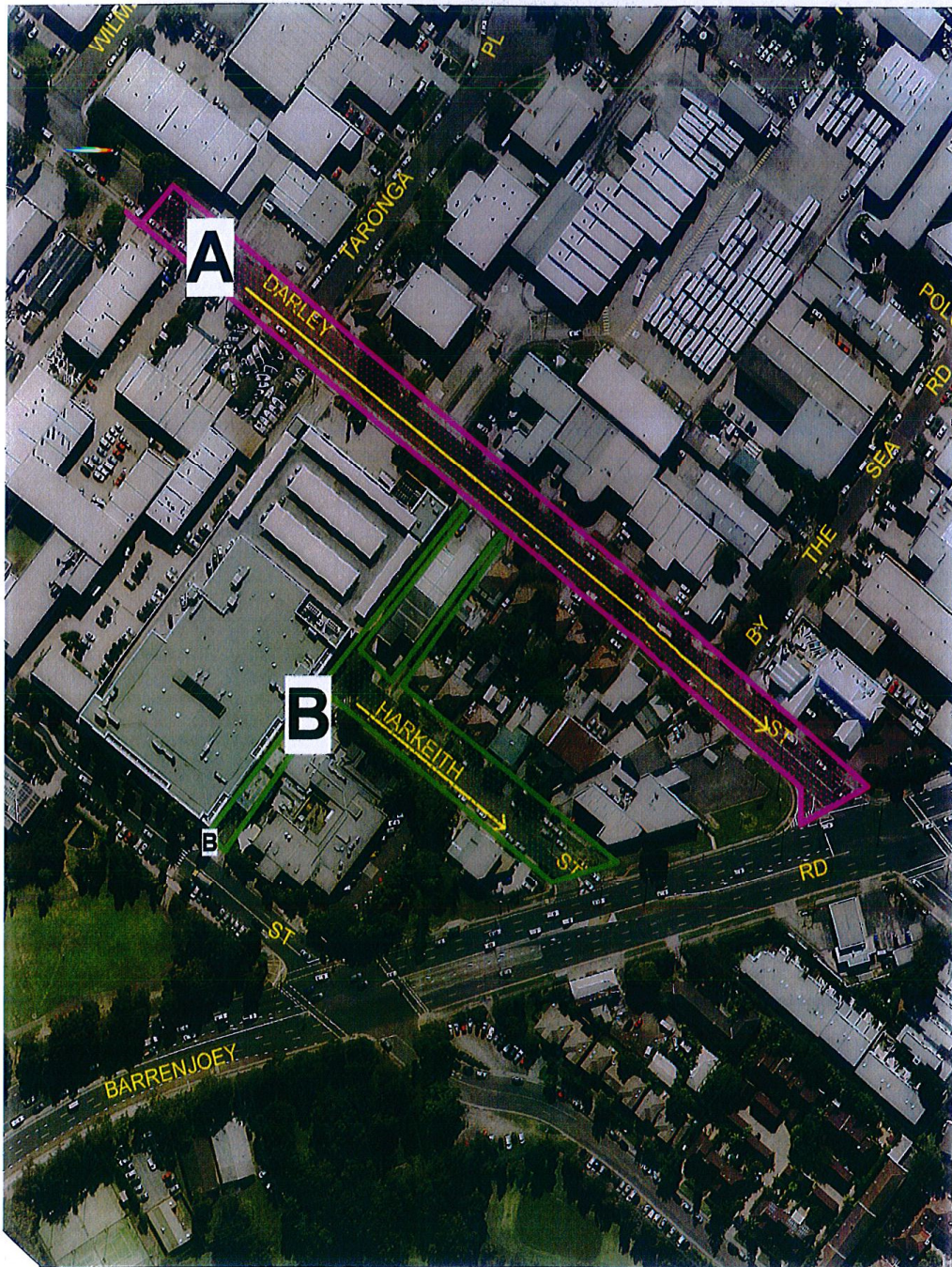
- Continuation of the marketing drive to increase the awareness and uptake of the Enliven Free app
- October Workshop for Pittwater Retailers–building capability using social media and making the most of free marketing tools. (evening)
- Event October - Enliven Event for Pittwater Commercial property owners, chambers of commerce, and retailers on the hot topic of - **Pop ups – the benefits and the Benefits** - how pop ups can increase business opportunities and profits for landlords and tenants
- Late October Christmas Workshop for Retailers and Business Owners – how to engage your shoppers locally - workshop.(evening)

ATTACHMENT 6 Leading and Learning Minutes

1 - DARLEY STREET PRECINCT

HUB A - Darley Street to Barrenjoey Road.

HUB B - Harkieith Street and pedestrian walkways to Darley St and including Mona Vale Hotel Walkway.



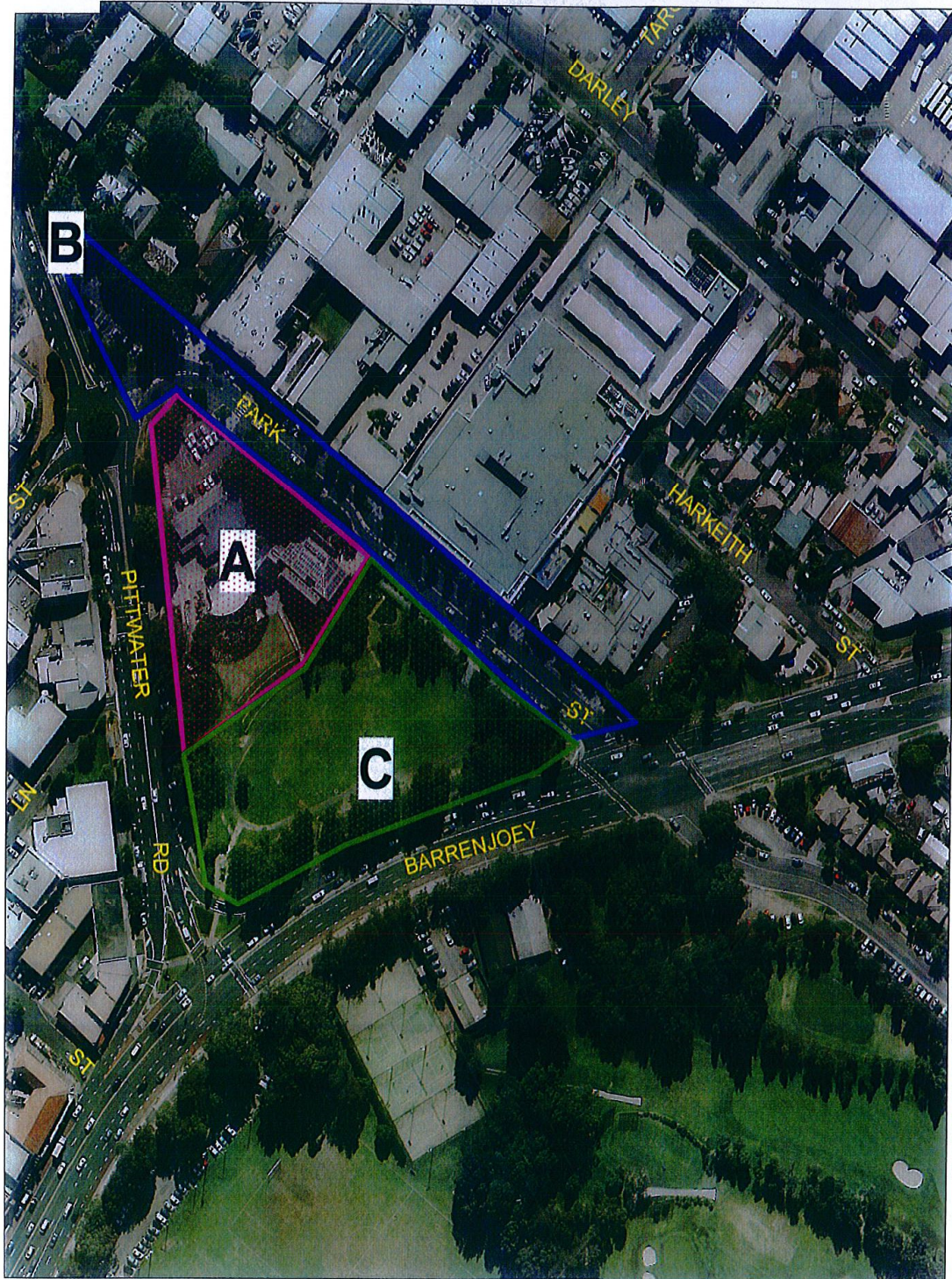


2 - PARK STREET PRECINCT

HUB A - Library, The Inch and walkway between library and community hall and carpark.

HUB B - Carpark at western end of Park Street and whole length of Park St (East).

HUB C - Village Park and surrounding footpath along Barrenjoey Road and Pittwater Road.





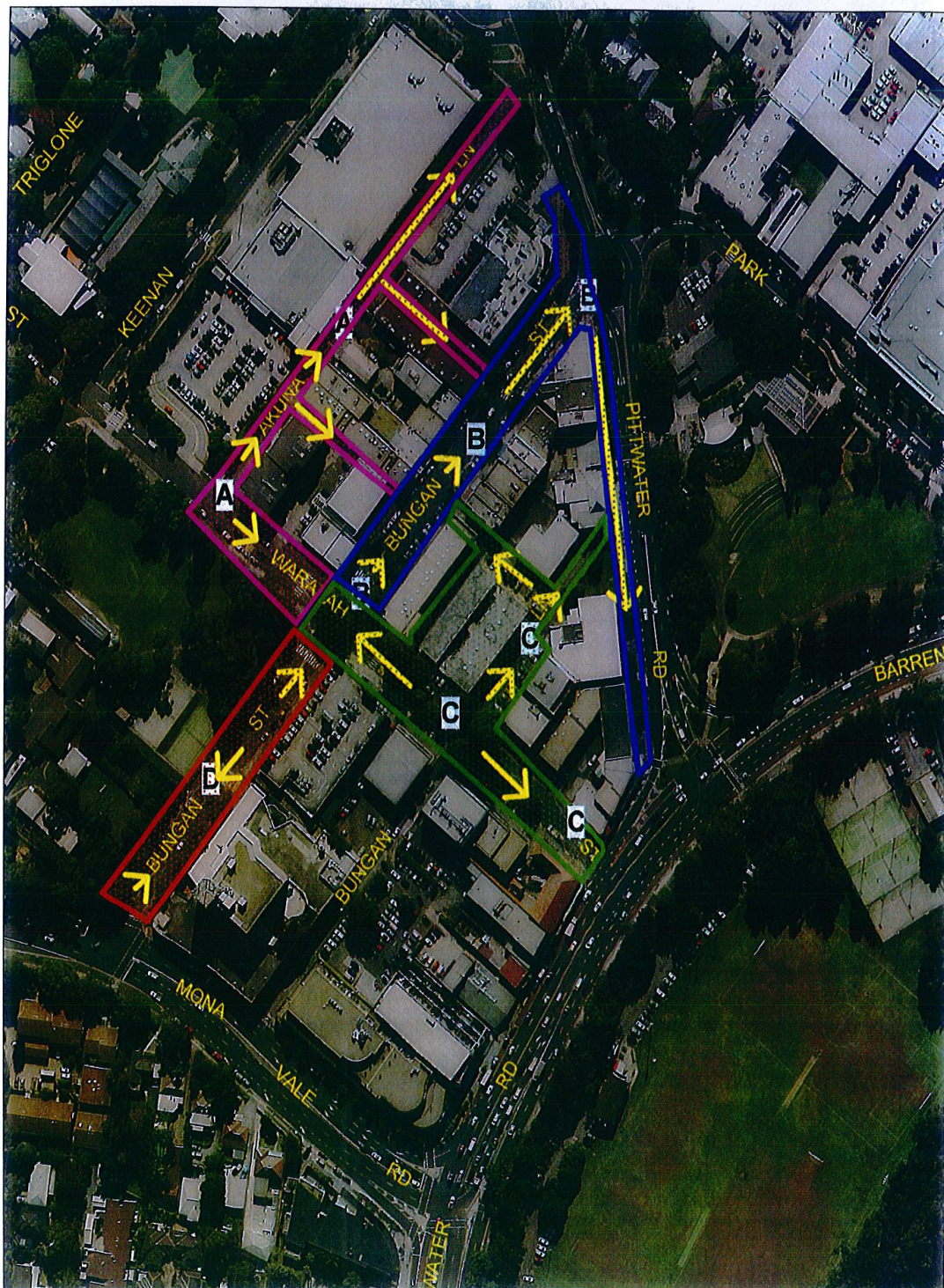
3 - UPPER MONA VALE PRECINCT

HUB A - Akuna Lane & Laneways adjoining Bungan Street & Akuna Lane and Waratah Street (West end).

HUB B - Bungan Street (from Waratah St to Pittwater Rd) and along Pittwater Rd to Barrenjoey Rd.

HUB C - Waratah St (Eastern end) to Bungan St - Bungan Lane from Waratah St to Pittwater Rd including Waratah Court.

HUB D - Bungan St from Waratah St to Monna Vale Rd.





4 - TRANSIT PRECINCT

HUB A -Pittwater Rd from Mona Vale Rd to Pittwater Road footpath.

HUB B -Pittwater Rd and Barrenjoey Road to Beeby Park and including park and ride at Kitchener Park and bus stop south of Beeby Park.

