

# Setting the Standard for a Sustainable Future in Ingleside

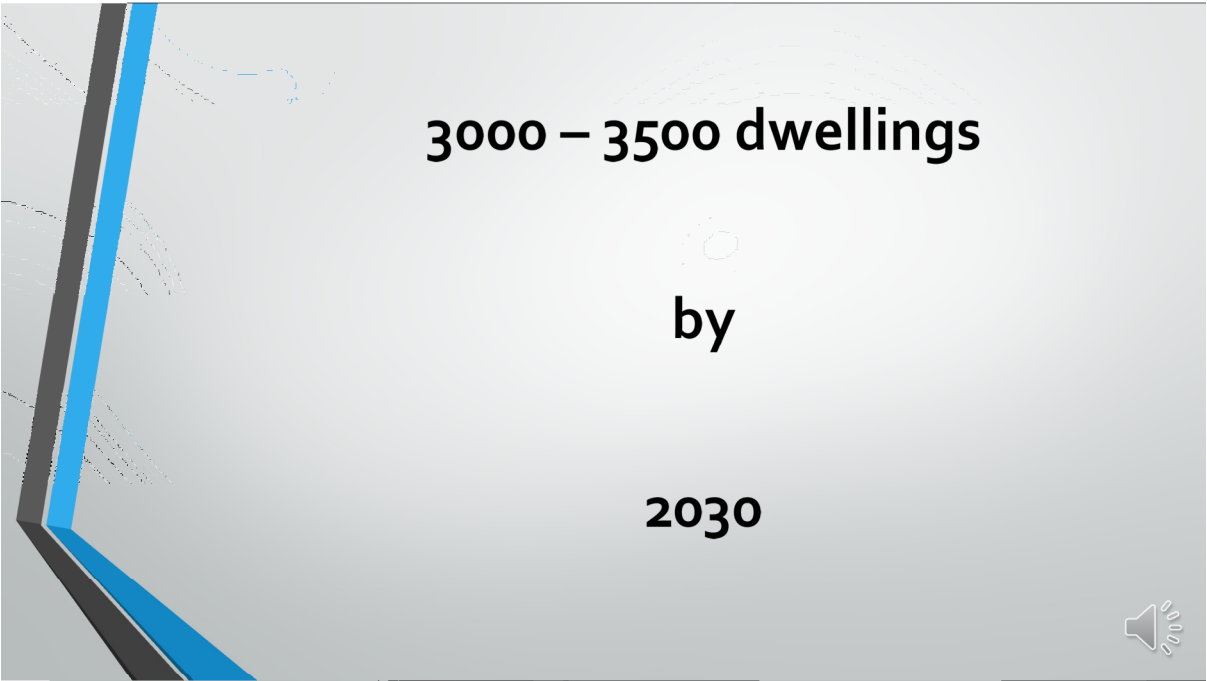
*Ingleside Reference Group presentation*

*- March 2015*

**We, as a responsible, forward thinking  
community, must plan now for a high  
level of sustainability in the near future**

**There is NO other viable  
option!**





**3000 – 3500 dwellings**

**by**


**2030**




**2030**

**Too late to say – ‘Gee, we should  
have done something to be more  
sustainable’**





**By 2030:**  
**40-60% reduction in**  
**Green House Gas**  
**from 2000 levels**



**By 2030:**  
**BASIX**  
**will only achieve a 10%**  
**reduction**





**Ingleside homes**

**Minimum NatHers  
7.5 Star Rating**



**TRANSPORT**

**20% of Green House Gas  
emissions**

**Need superb public transport system**







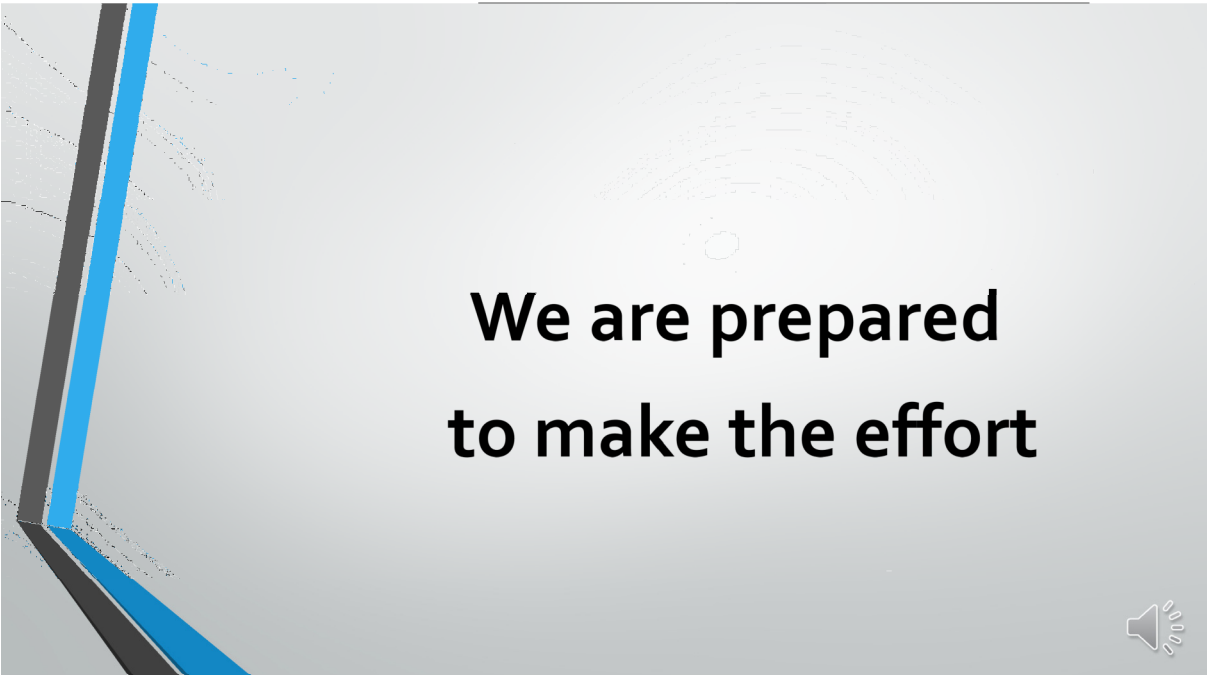
# TRANSPORT

## Bicycle and walking tracks




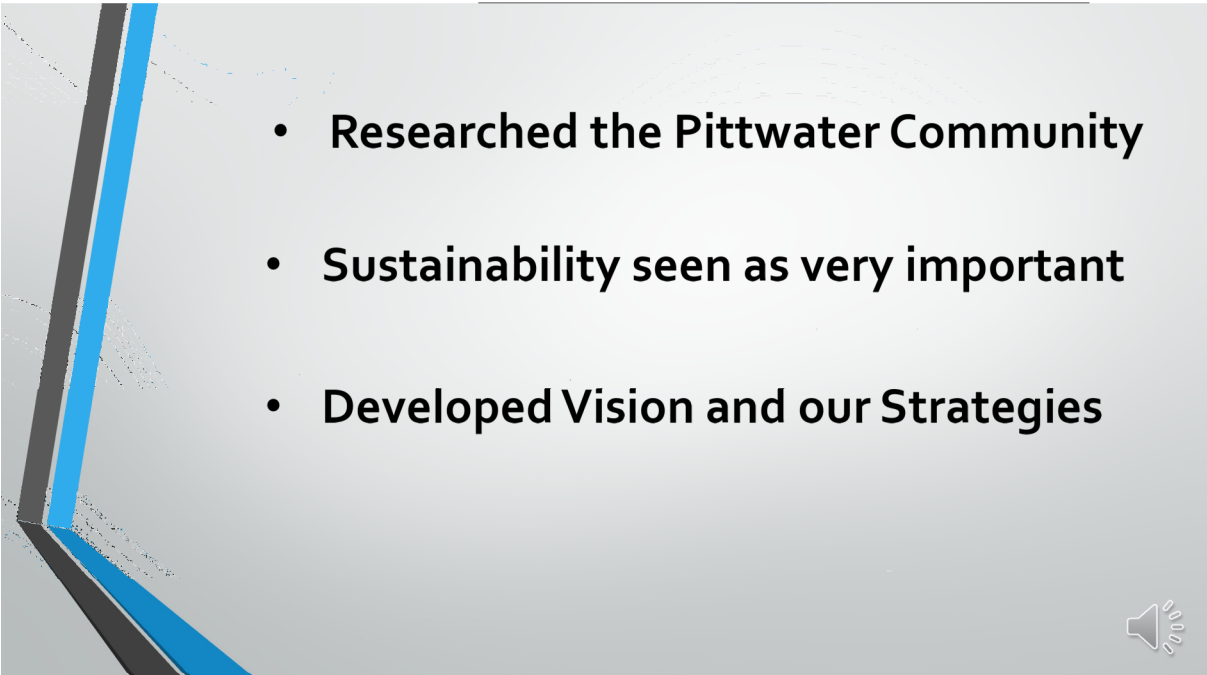

**MUST MAKE  
A COMMITMENT  
TO CHANGE**

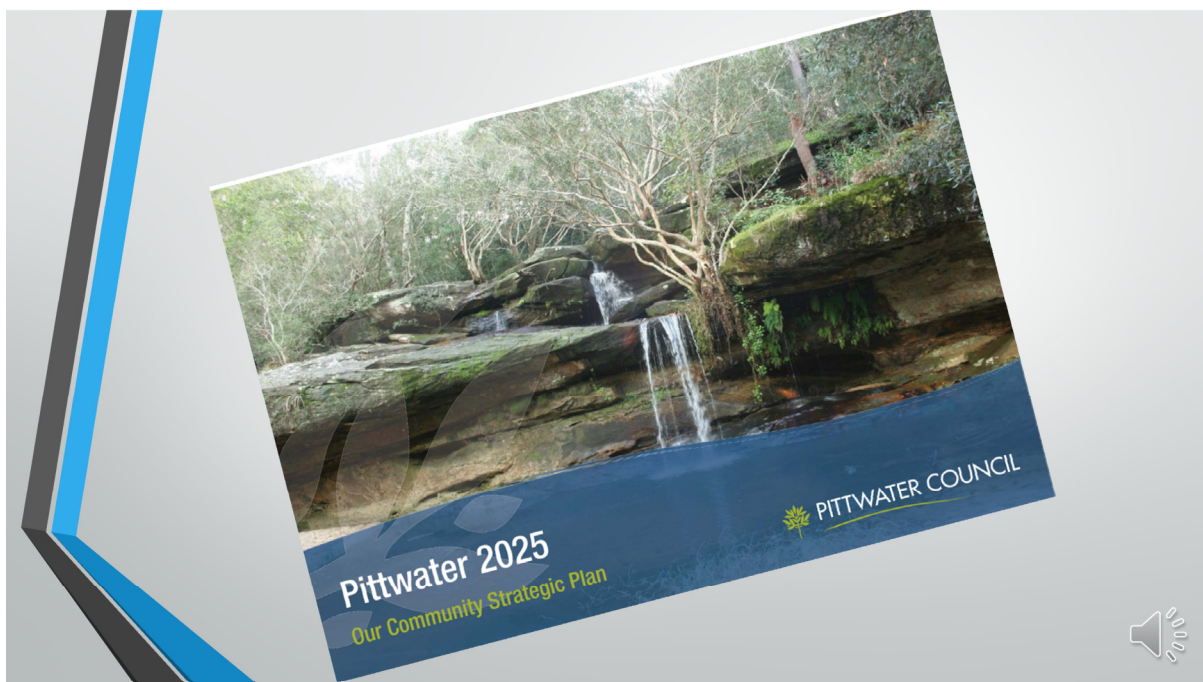




**We are prepared  
to make the effort**



- 
- **Researched the Pittwater Community**
  - **Sustainability seen as very important**
  - **Developed Vision and our Strategies**
- 



## Pittwater's Vision

'to be a vibrant sustainable community  
of connected villages inspired by bush,  
beach and water'

## Pittwater's Vision

Ingleside must fit within the Pittwater Vision and the agreed strategies



## Pittwater Council Resolution

Council wants Ingleside to be:

***"a sustainable and  
ecologically sensitive  
development form based on  
the highest standards".***



# Ingleside

Planned, Built, Maintained  
to  
World's best sustainability  
practices



# Infrastructure

Rainwater harvesting  
Sewage treatment to tertiary level  
Solar panel street lighting  
Community gardens  
Integration of good public transport  
Walkways and cycle paths  
Community centre/café  
Work Centres



## Homes

Net zero energy, PV panels & high energy efficient design

Going beyond Basix requirements, Min 7.5 NatHERS star rating for buildings

Solar or heat pump for hot water

Greywater reuse



## Environment

Ingleside must have a high level of effective safeguards to guard against impacts on Native vegetation and wildlife





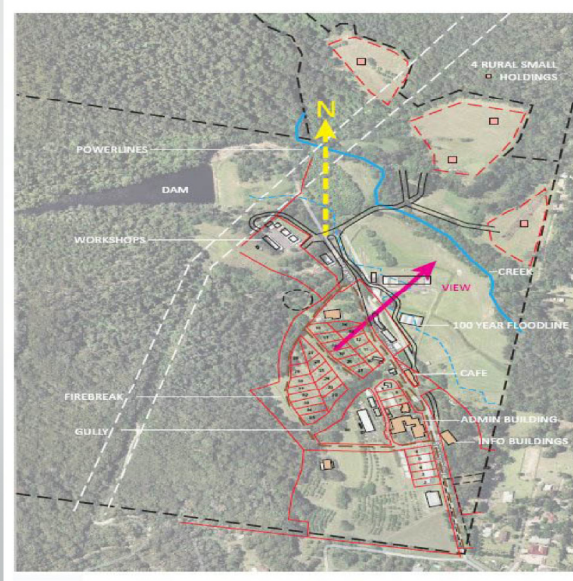
## Cape Paterson - Victoria



## Currumbin ecoVillage, QLD



# Narara ecoVillage - Gosford



# Googong - Queanbeyan





## Googong - Queanbeyan



## Expectation

Our expectation is that the NSW Government, together with Pittwater Council and the Pittwater community will work together to ensure that Ingleside is researched, planned and developed to meet the Vision of Pittwater.

**Anything less is  
unacceptable**



# QUESTIONS

**Do you agree?**

**Do you support it?**



## Ingleside Precinct Sustainability Group

Contact: [graamejessup@optusnet.com.au](mailto:graamejessup@optusnet.com.au)

# Questions for the Planners

Do the Planners agree that as a result of current planning Ingleside will not come close to meeting a 40% to 60% reduction in Green House Gas emissions?

Will the planners make sure Ingleside embodies changes that will meet the 40% to 60% reduction by 2030? If not please indicate the barriers that will prevent them from doing so.

Have the planners agreed to obtain GreenStar certification for Ingleside? If not, why not.

## Getting Around

### Business As Usual...

- 3,500 dwellings = 7,000 extra cars
- Min. 3,000 extra cars during AM & PM peaks  
= traffic gridlock, even with Mona Vale Rd upgrade.

Why?

- Induced Traffic Growth



Into the mid-21st century  
this means of 'getting around' will not work -

It is a 19th century solution using 20th century  
technologies.

It will not continue.



## Let's set Ingleside up to be the change


Totally integrated transport solution...

- meets the actual needs of residents and commuters,
- provides an attractive alternative to cars,
- encourages an active and interactive community.

## How? The solution includes

- Walkways and cycleways throughout,
- Very frequent local and district loop shuttles
  - (small buses in 2015, by 2030 who knows?)
- Mass transit services to major commercial centres beyond (City, Macquarie etc)
  - very frequent in peak times
  - fast, luxurious, clean, hi-tech (wi-fi & power etc)
  - BRT in 2015, by 2050 who knows





And they won't exist here  
unless we decide that they will.

We have that chance with Ingleside.

9



## Ingleside Precinct Sustainability Group

Contact: [graemejessup@optusnet.com.au](mailto:graemejessup@optusnet.com.au)