



SETTLED/ UNSETTLED

**Art on asylum-seeker,
migrant and refugee
experiences**

Children's Exhibition Trail
(for ages 7 - 12)

Settled/Unsettled is an exhibition of work by seven artists. Through painting, film, ceramics and art installations, they explore issues around war and cultural displacement.

By exploring conflict and exile, home and belonging, the exhibition encourages mutual understanding and contributes to the global movement of empowerment and acceptance of all refugees.

Walk through the three exhibition rooms.

Look at each of the artworks.

Think about the questions in this booklet.

Create your responses.

There are no wrong answers and no limits to your imagination!

Words

Asylum-seeker

a person who has fled their home country due to fear of persecution and is seeking protection or sanctuary in another country but has not yet had their claim for protection finally decided on. A person remains an asylum seeker until their protection 'status' has been determined.

Cultural displacement

is a concept that involves the real or perceived loss of place, sense of ownership and belonging.

Exile

when someone is forced to leave their native country or home and go to live in another country for a period of time, especially for political reasons or as a punishment.

Migrant

a person who moves from one country to another, especially to find work or better living conditions. People may also move due to significant hardships that arise from natural disasters, famine, or extreme poverty. Those who leave their countries for these reasons would not usually be considered refugees under international law.

Migration

the movement of people from one country, locality or place of residence to settle in another.

Refugee

a person who has been forced to leave their country to escape war, persecution, or natural disaster and, as a result, requires international protection. Their situation is often so unsafe and unbearable, that they cross national borders to seek safety in nearby countries, and become internationally recognized as 'refugees'.

Social justice issues

social justice means that people are equal and deserve the same rights. Social justice issues are when actions are taken that treat people unfairly or when their rights are taken away.

Kathrin Longhurst

Room 1 (Batten - Large gallery)

3

These paintings by Kathrin Longhurst are realistic portraits of three women: Tamil, Haya and Mariama. The artist has painted a close up of their faces, making us focus on their different poses and facial expressions, showing their courage and power.

Find these 3 portraits hanging in this room. **Look** closely at their faces, eyes and jewellery.

Imitate and **describe** their facial expressions. What do you think each woman is thinking or feeling? Write your thoughts in the speech bubbles below.



Kathrin Longhurst, L-R: Tamil, Haya, Mariama, oil on linen

A large, empty speech bubble with a white background and a black outline, intended for writing thoughts about the portrait of Tamil.A large, empty speech bubble with a white background and a black outline, intended for writing thoughts about the portrait of Haya.A large, empty speech bubble with a white background and a black outline, intended for writing thoughts about the portrait of Mariama.

Draw a portrait of yourself and an object that says something about you.

Mehwish Iqbal

Room 1 (Batten - large gallery)

Mehwish Iqbal explores ideas about migration, courage and identity. This textile is about a family leaving their home country and walking a long distance across a border into another country.

Look closely at the embroidered stitches that form the outlines of various figures and clothing.

Imagine you and your family need to leave your home and go to another country. What might you take with you?

Draw your family and some things you would take on your journey.



Mehwish Iqbal, *When they walk, I walk, when they stop, I stop*, textile

Angus McDonald

Room 2 (Rubbo - middle gallery)

5

Angus McDonald is an artist and filmmaker who worked with Kurdish Iranian writer Behrouz Boochani to produce the film, Manus. Behrouz fled his war-torn country on a boat to seek asylum in Australia.

Watch this short film.

Describe what the asylum-seekers might be feeling?



Behrouz Boochani, photo
by Angus McDonald

Create a short poem about yourself and things that matter to you.
Start each line with the letters that form the word **IDENTITY**.

I _____

D _____

E _____

N _____

T _____

I _____

T _____

Y _____

Penny Byrne

Room 4 (Rubbo - middle gallery)

Penny Byrne creates sculptural installations using vintage ceramic figurines to highlight the dangerous journey large groups of refugees make across the ocean in search of a better life.

Count the number of figures you can see. The artist has put orange lifejackets on the figures. Why do you think she has done this?



Penny Byrne, *Europa Europa*, 2017, vintage figurines, hand painted

Hedar Abadi

Room 3 (Access – window gallery)

7

Hedar Abadi grew up near a river in Babylon, Iraq. He came to Australia as a refugee fleeing war. He still feels a connection to the waters of his homeland. Fish are featured a lot in Hedar's artworks.

Find this sculpture. **Look** at the shapes in it. **Spot** the fish and count them. **Describe** what you see. What materials has he used to make this work?



Hedar Abadi, *Migration*, mixed media

Draw a picture of yourself swimming in the sea with some fish

Mehrdad MehrAeen

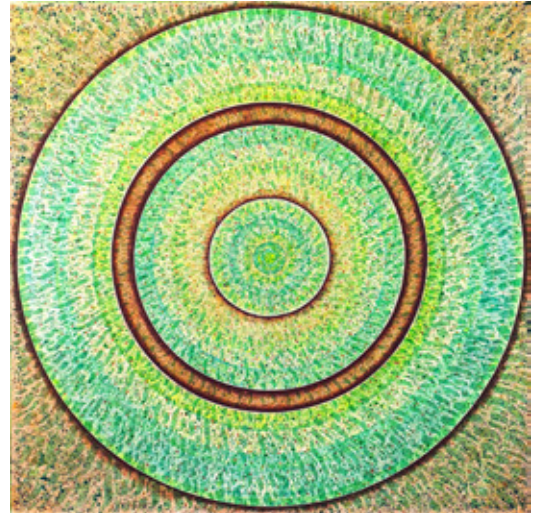
Room 3 (Access - window gallery)

Mehrdad has created this artwork inspired by the shapes, patterns and colours of nature.

Find this painting called Dance of the Green Roots. **Write** down how many circles you can see in it.

Close your eyes. **Imagine** the colours, shapes and patterns you might see in nature.

Draw what you see.



Mehrdad MehrAeen,
Dance of the Green Roots

Write some words that describe how you feel when you are in nature.

Raneen Shamon

Room 3 (Access – window gallery)

9

For this artwork, Raneen Shamon used pale pink melted wax from church candles mixed with incense from her home country, Iraq. Melting the candle reveals a small bird made of pewter inside, symbolising new beginnings. The smell represents the prayers for peace and mourning for those who died in war.

Find this small sculpture.

Describe what you see.



Raneen Shamon, *Melt Me*, wax, metal

Imagine making your own candle with a special object inside.

Draw your idea.



SETTLED/ UNSETTLED

**Art on asylum-seeker,
migrant and refugee
experiences**

24 June - 31 July 2022

This exhibition is presented as part of Refugee Week 2022 by Manly Art Gallery & Museum in partnership with Settlement Services International, an organisation that facilitates diverse cultural participation and individual artistic expression by nurturing cultural practitioners from refugee and migrant backgrounds. Supported by Community Northern Beaches and The Social Outfit.

All images are courtesy and © the artists.

This resource was prepared by MAG&M staff with the permission of the artists.


Manly Art Gallery & Museum

West Esplanade Reserve, Manly

9976 1421 | artgallery@northernbeaches.nsw.gov.au

Open 10am - 5pm, Tue - Sun | Free entry



 [magamnsw](https://www.instagram.com/magamnsw)
magam.com.au