

Minutes

MANLY WARRINGAH WAR MEMORIAL STATE PARK ADVISORY COMMITTEE MEETING

Held on-line via Microsoft Teams on

MONDAY 1 FEBRUARY 2021

Minutes of the Manly Warringah War Memorial State Park Advisory Committee meeting held on Monday 1 February 2021 online commencing at 5:00pm.

ATTENDANCE:

Committee Members

Mayor Cr Michael Regan	Northern Beaches Council
David Beharrell	Environment Representative (Community member)
Geraldine Hall	Recreational Representative (Community member)
Ann Collins	Community Representative (Community member)
Mel Hall	Senior Conservation Planning Officer, NSW National Parks and Wildlife Service Office of Environment and Heritage
Stan Rees	NSW Crown Lands

Council Officers

Steven Lawler	Executive Manager Parks and Recreation
Damian Ham	Manager Open Space and Recreation Planning
Chris Munro	Manager Bushland and Biodiversity
Jessica Currie	Coordinator, Recreation Planning
Jodie Crawford	Manager, Coast and Catchments
Chris Buckley	Coordinator Parks Manly Dam
Robin Anderson	Senior Ranger Manly Dam

Guest Speakers

Stephen Hancock	Mountain Biking Representative
Doug Pariss	Transport NSW
Jack McGovern	Transport NSW
Alex Major	Transport NSW
Tony Stante	Transport NSW
David Bohm	Transport NSW
Gemma Poppett	Transport NSW
Linda Armstrong	Transport NSW

1. ACKNOWLEDGEMENT OF COUNTRY

2. APOLOGIES

- Cr Stuart Sprott Northern Beaches Council
- Peter Bergman Ranger Team Leader, Sydney North Area, Greater Sydney Branch, NSW National Parks and Wildlife Service

3. DISCLOSURES OF INTEREST

- There were no declarations of pecuniary or non-pecuniary conflicts of interest.

4. CONFIRMATION OF MINUTES OF PREVIOUS MEETING

- Minutes of the meeting held on 9 November 2020 were adopted.

5. UPDATE ON ACTIONS FROM PREVIOUS MEETINGS

- The Actions were not reviewed.

6. AGENDA ITEMS

6.1 Manly Dam Mountain Bike Presentation

- Stephen Hancock joined the meeting to deliver his “Manly Dam Mountain Bike Track Trail Update 2021” presentation to the Advisory Committee (presentation attached).
- Stephen provided an overview of his connection with the State Park being a paddleboarder, mountain bike rider and using the State Park for a variety of other recreational activities. He noted that he was presenting on a personal basis and not on behalf of the mountain biking clubs that he is a member of.
- In his view the mountain bike trail is maintained poorly; construction has been inadequate; investment from Council is inadequate; the action items from the 2014 Plan of Management have not been completed; there has been an increase in rider usage since COVID-19 and the construction of the Beaches Link will impact the State Park bike trails during and after construction.
- Stephen offered his vision for the State Park mountain bike track (page 19 of attached presentation) including his proposal for immediate actions for maintenance, park management, trail audit and budget.
- Steve Lawler advised that Council cannot commit to funding via the Advisory Committee and there are competing priorities, but he is advocating for further funding for the State Park.
- Ann Collins thanked Stephen for his presentation. She also noted that there have been outstanding actions from the 2014 Plan of Management and the previous one, in all areas not just Mountain Bike issues.
- Steve confirmed that due to the ongoing COVID-19 Public Health Orders there have been restrictions on Council volunteers however he is happy to explore this further.
- Stephen requested rider representation on the Advisory Committee.

ACTION

- That the Advisory Committee note the presentation by Mr Hancock.
- Staff to prepare an estimate for the cost of 8 signs in the location identified by the biking community presented by Stephen Hancock.
- Council to follow up volunteering at the State Park and the Public Health Orders.
- That Mr Hancock's request for rider representation on the Advisory Committee be investigated.

7. Overview of the Beaches Link Environmental Impact Statement (EIS)

- Doug Pariss joined the meeting along with six of his colleagues from Transport NSW to provide an overview of the Beaches Link Environmental Impact Statement (EIS) in relation to the State Park.
- The overview included an extensive discussion where many questions and concerns were raised by the Advisory Committee and answered or noted by Transport NSW.
- The key discussion points were focussed around:
 - o the community feedback process
 - o working to minimise the environmental footprint and impact of this project
 - o research on environmental impacts and the management measures in place including the request from the Advisory Committee for written acknowledgment from Transport NSW that their works will have no impact of water quality on the State Park
 - o an overview of the design and operational phases including timelines
 - o biobanking opportunities and acquiring lands ahead of projects was discussed
- Linda Armstrong provided details for the upcoming Transport NSW Air Quality Information Session scheduled for Tuesday 9 February 6:00pm – 7:30pm
- The Advisory Committee were requested to provide feedback on the EIS by Friday 12 February 2021.

ACTION

- Transport NSW to provide Council with the contact details regarding biobanking and acquiring land.
- The Advisory Committee to provide feedback on the EIS by Friday 12 February 2021.
- Chris Munro to discuss biobanking options at the State Park with Dave Beharrell.
- Damian Ham to contact Linda regarding other stakeholders for the bike Trail user meeting.

8. Water-skiing

- Due to the time constraints it was agreed that this item would not be discussed in this meeting and a separate meeting would be arranged for 6 weeks' time.

ACTION

- Water-skiing meeting to be arranged for 6 weeks' time. Paul Fletcher, President of the Manly Warringah Water Ski Club to be invited.
- Damian to circulate the water-skiing discussion paper to the Advisory Committee prior to the meeting.

9. GENERAL BUSINESS

- It was confirmed that Council already monitors the water for algae and bacteria and no current concerns have been raised. A request was put forward to review the data and water monitoring related actions in the Plan of Management and for the Advisory Committee to be updated annually on the water quality reporting.
- Comment was made on the low allocation of capital funds for the State Park and agreed on the action for track counters as this information will feed into a business case for more allocation of Council funds for the State Park.
- Council is working to include Aquatic Reserve in the National Heritage nomination.
- It was noted that the Advisory Committee had not been advised of the Water Management for Development Policy that went to Council in the August 2020 meeting. It was agreed that Council would rectify the mapping to include the State Park and Curl Curl Creek into the Water Management Development Policy.
- There is currently an internal service review being conducted for the consideration of Councillors including funding for recreational facilities.
- An appeal has been filed with the Land and Environment Court for the 181 Allambie Road, Allambie Heights Development Application.
- Council was successful in receiving a Crown Lands grant of \$128,000 to upgrade the Roosevelt to Nyrang Pathway.

ACTION

- The Advisory Committee requests that the Aquatic Reserve be included as part of the Manly Warringah War Memorial State Park National Heritage listing nomination.
- The Advisory Committee to write to the Executive Manager, Environment and Climate Change seeking an update on the timeline for the inclusion of the State Park and Curl Curl Creek into the Water Management Development Policy.
- Council to review the water monitoring actions in the Plan of Management and to provide an annual update.
- Next Meeting to be held Monday 17 May 2021.

**The meeting concluded at 8.19pm
This is the final page of the Minutes comprising 5 pages
of the Manly Warringah War Memorial State Park Advisory Committee
meeting held on Monday 1 February 2021.**

MANLY DAM MOUNTAIN BIKE TRACK TRAIL UPDATE 2021

MANLY WARRINGAH WAR MEMORIAL STATE PARK ADVISORY COMMITTEE
PRESENTED BY STEPHEN HANCOCK
1ST FEBRUARY 2021



WHY HAS SYDNEY'S BUSIEST MOUNTAIN TRACK BEEN LEFT TO FALL INTO DISREPAIR BY NORTHERN BEACHES COUNCIL?



MANLY DAM MOUNTAIN BIKE TRACK IS BEING IRREVOCALLY DAMAGED BY MISMANAGEMENT



**RIDER NUMBERS ARE BOOMING, BUT SYDNEY'S MOST POPULAR TRAIL IS
SUFFERING FROM POOR MANAGEMENT, LACK OF MAINTENANCE,
HISTORICALLY POOR CONSTRUCTION & MINIMAL INVESTMENT FROM
COUNCIL.**

**THE CURRENT CONDITION OF THE MOUNTAIN BIKE TRACK IS
CAUSING UNNECESSARY DAMAGE TO THE ENVIRONMENT &
IS DANGEROUS TO ITS KEY USER GROUP OF INTERMEDIATE RIDERS**



THE CURRENT CONDITION OF THE MOUNTAIN BIKE TRACK IS NOT IN KEEPING WITH ITS 2014 PLAN OF MANAGEMENT

TT2	Continue to maintain a network of safe and sustainably managed routes – of differing track standards/conditions, distance/duration and character – within the Park, to offer a choice of experiences. This network will include bush tracks and fire trails in the Park's bushland areas, sealed or high standard pathways in the Park's more developed areas or along the Park's margins, and cleared asset protection zones along the Park's margins. Track/trail re-routings and works may be undertaken as required for user safety and to minimise adverse impacts on the Park's values (in addition to the works set out below, and in sections DU and A). Informal and unauthorised tracks will be closed and rehabilitated (A, B, C, D, E)	Moderate	HIGH continuing	Park management
TT8	Existing track treatments on the approved mountain biking loop will be maintained as required – and new or additional track treatments installed – for user safety, to minimise adverse impacts on the Park's values, and to minimise the likelihood of detouring/avoidance and the development of unauthorised alternative tracks (input will be sought from mountain bikers, and other relevant users, regarding the design and siting of track treatments). (D, B, A)	Moderate	Medium continuing	Park management
TT9	<i>Liaise with representatives of mountain bike riders, bush walkers and environmental groups regarding sustainable management and maintenance of the approved mountain biking loop, including catering for a cross section of riders and abilities as well as providing for rider and visitor safety (refer section CI). (D, B, A, C, E)</i>	Minor	Medium continuing	Park management Council
TT20	All approved tracks and trails will be maintained through a programmed system of inspections and maintenance, supported by responsive maintenance works as required. All maintenance, preventative and other works will be documented. Informal and unauthorised tracks will be closed and rehabilitated – and track alignment, design and treatments will endeavour to minimise the likelihood of the creation of unauthorised/alternative tracks. (A, B, D)	Moderate	HIGH continuing	Park management



HIGH PRIORITY ITEMS ON 2014 PLAN OF MANAGEMENT ARE STILL NOT FUNDED OR ACTIONED 7 YEARS ON.

TT16	Investigate the practicality and implications of relocating that section of the identified mountain biking loop now located outside the Park along the northside of Manning Street (opposite Balgowlah North Public School) to a new section of mountain bike only track a short distance inside the Park boundary in this area. Implement if feasible, and the environmental impacts are acceptable and funding available. (D, A)	Negligible (Moderate if to be implemented)	HIGH	Trust Park management
------	--	---	-------------	--------------------------

MANLY DAM MOUNTAIN BIKE TRACK COUNCIL PERCEPTION

"Manly Dam Mountain Bike track is one of Sydney's best and is enjoyed by beginners to advanced riders."

www.northernbeaches.nsw.gov.au



Tracks & trails

	Park Circuit Track	7.3 km	3 hour circuit
	Wildflower Walk	.35 km	15 min one way
	Nature Trail	1.5 km	40 min one way
Minor Walking Tracks			
	McCombs Hill Track	1 km	25 min round trip
	Curl Curl Track	2 km	30 min one way
	Eva's Track	2 km	1 hour circuit
	Heath Track	1 km	25 min circuit
Mountain Bike Trail			
	Mountain Bike Trail	11 km	Loop, clock-wise
	Shared Path		
	Fire Trail		

Legend

	Manly Dam Lake		Parking		Drinking Water		Main Gate
	Power Boat Area		Toilets		Rubbish Bins		Walker Entry Points
	National Park		Picnic Tables		Boat Ramp		Bike/Walker Entry Points
	Manly Warringah War Memorial State Park (Manly Dam)		Covered Picnic Tables		Playground		Service Access
	Urban		Electric Barbeques		Water Skiing		Picnic Area Section 1
	Roads/Paths		Wood Barbeques		Swimming		Picnic Area Section 2
	Parking Areas		Dogs on leash on tracks only – not allowed in Picnic Areas		Sports Field		Picnic Area Section 3
							Picnic Area Section 4



MANLY DAM MOUNTAIN BIKE TRACK COUNCIL PERCEPTION

Destination Northern Beaches

Creating a sustainable visitor economy

Off-road cycling

Off-road cycling is a growing market within the nature-based tourism sector and this niche is rapidly growing in popularity. It can be an ecologically sustainable tourism experience which encompasses, social and recreational riding, touring, competition, cycling festivals and spectator events. It reaps huge health and social benefits from getting out and about in the fresh air.

Northern Beaches residents and visitors participate in a broad spectrum of riding disciplines ranging from cross country and gravity trails, to BMX, dirt jumps and pump tracks. The Northern Beaches boasts designated trails and facilities at a number of locations for off-cycling enthusiasts who seek a safe and enjoyable bush cycling experience. A key concern to these enthusiasts and other community members is knowing that Council is managing the potential environmental and biodiversity impacts on these locations as well as where there are unauthorised trails.

As part of the development of the Open Space and Recreation Strategy, Council will be analysing key trends in off-road cycling, current provision and future requirements of this sport on the Northern Beaches. The project will consider all disciplines, all ages and all stages to help inform Council's decision making and involves consultation with riders to better understand and accommodate their needs.

Manly Dam

This 377 hectare reserve Manly Warringah War Memorial State Park - known as Manly Dam, has a wonderful diversity of flora and fauna, including a number of threatened species. The area attracts a lot of wildlife, including some very friendly black swans, a variety of ducks and other birds, goannas, lizards and many more. It's great for picnics by the water, renowned for mountain biking and water skiing, and its network of bush tracks are perfect for exploring. Once the water reservoir for Manly, it has been a recreational park since WWII. This beautiful bushland area is hidden away from the crowds, nestled between Manly Vale, Allambie and North Balgowlah. Now one of Sydney's best mountain biking tracks is enjoyed by beginners to advanced riders and the Manly Dam Heritage Walk, which is 7.3km in length goes around the lake gives the Northern Beaches potential to diversify the nature offering which is so close to the Sydney CBD.

MANLY DAM MOUNTAIN BIKE TRACK RIDER PERCEPTION



MANLY DAM MOUNTAIN BIKE TRACK RIDER PERCEPTION



Paul Lidgard

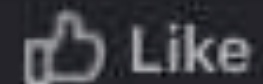
July 4, 2013 · Seaforth, Sydney · 🌐

Hey all, Manly Dam is still pretty wet please don't ride there until the weekend. This view is generally agreed on various forums. The track isn't coping with erosion from riding in the wet. Considering Trailcare is in the process of helping with the IMBA assessment of Manly Dam MTB trails and getting the volunteer trail maintenance days going again please don't ride until things dry out more. Thanks.



3

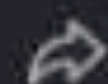
6 Comments



Like



Comment



Share



Bill Kaloudis

Totally agree Paul, people should stay off for a month after all the rain we have had recently.

Like · Reply · 7y



Warren Burgess

It would be a good idea in the future to make the trails weather proof. What do you think? is that feasible?

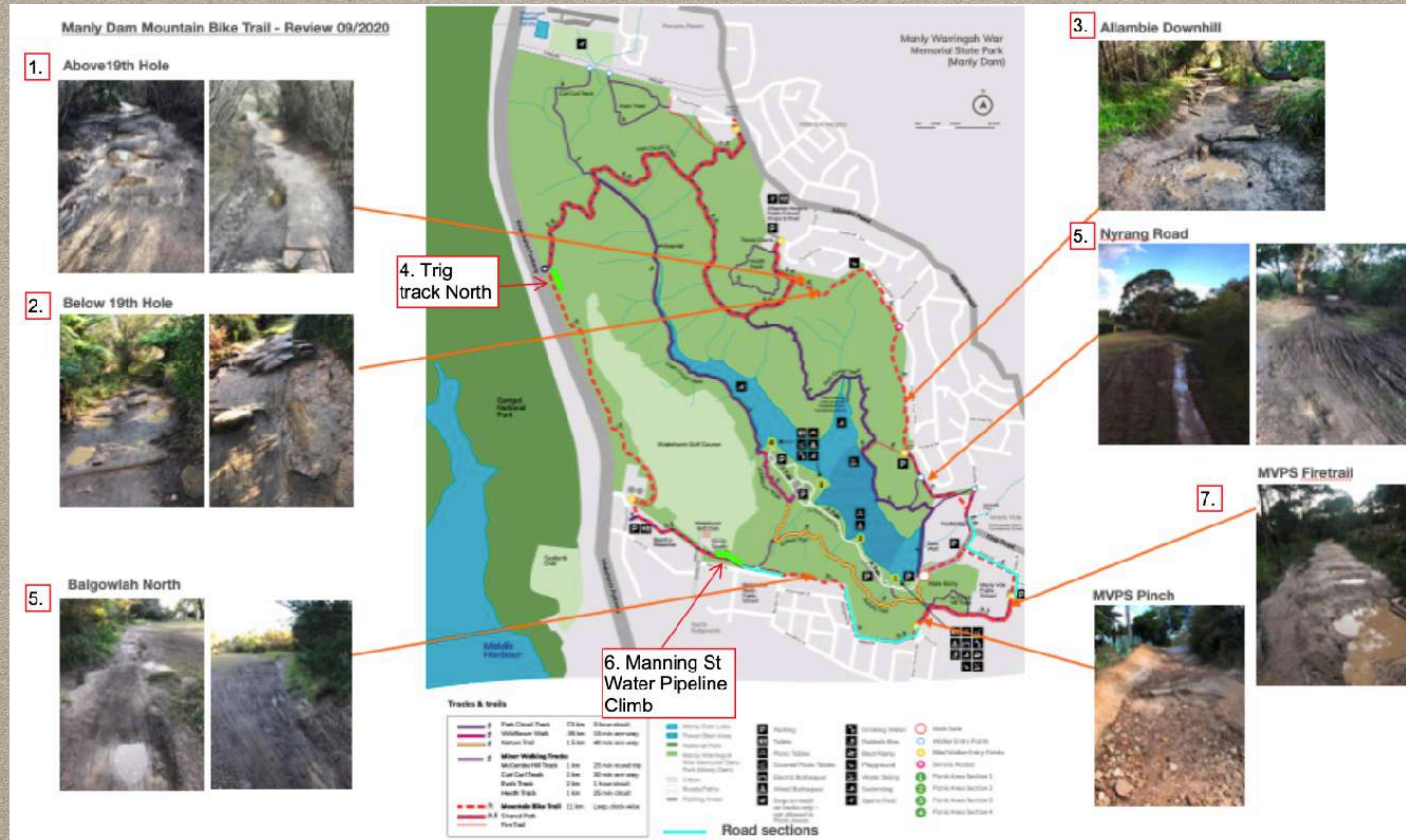
Like · Reply · 7y



2



MANLY DAM MOUNTAIN BIKE TRACK DISREPAIR OVER ENTIRE TRAIL



BEST PRACTICE TRAIL NETWORKS

Sydney Region

Old Man's Valley
Hornsby Council



Mill Creek
Sutherland Shire



Wylde
Western Sydney
Parklands



Ourimbah
Central Coast



Awaba
Central Coast



Australia Wide

Stromlo
Canberra



Dungog
Dungog Shire Council



Derby
Tasmania



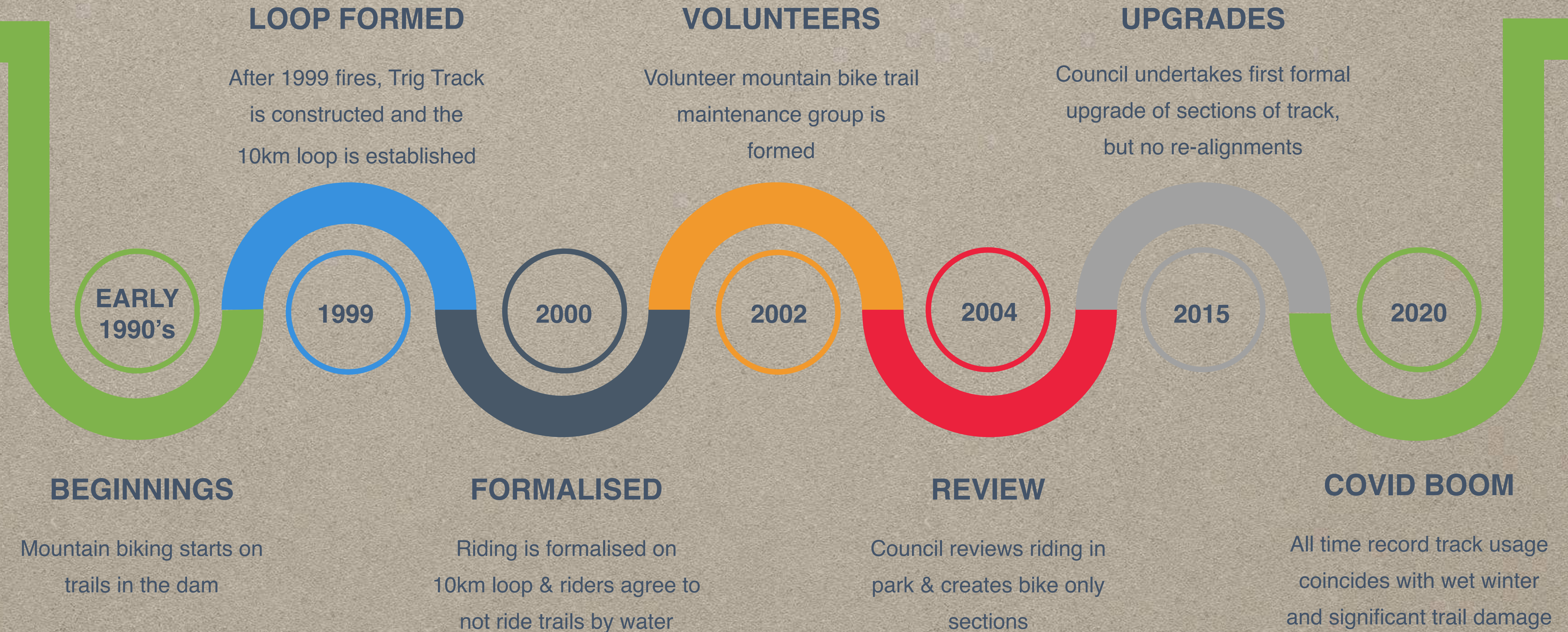
Wild Mersey
Tasmania



Port Douglas Trail
Far North Qld



MANLY DAM MOUNTAIN BIKING HISTORY



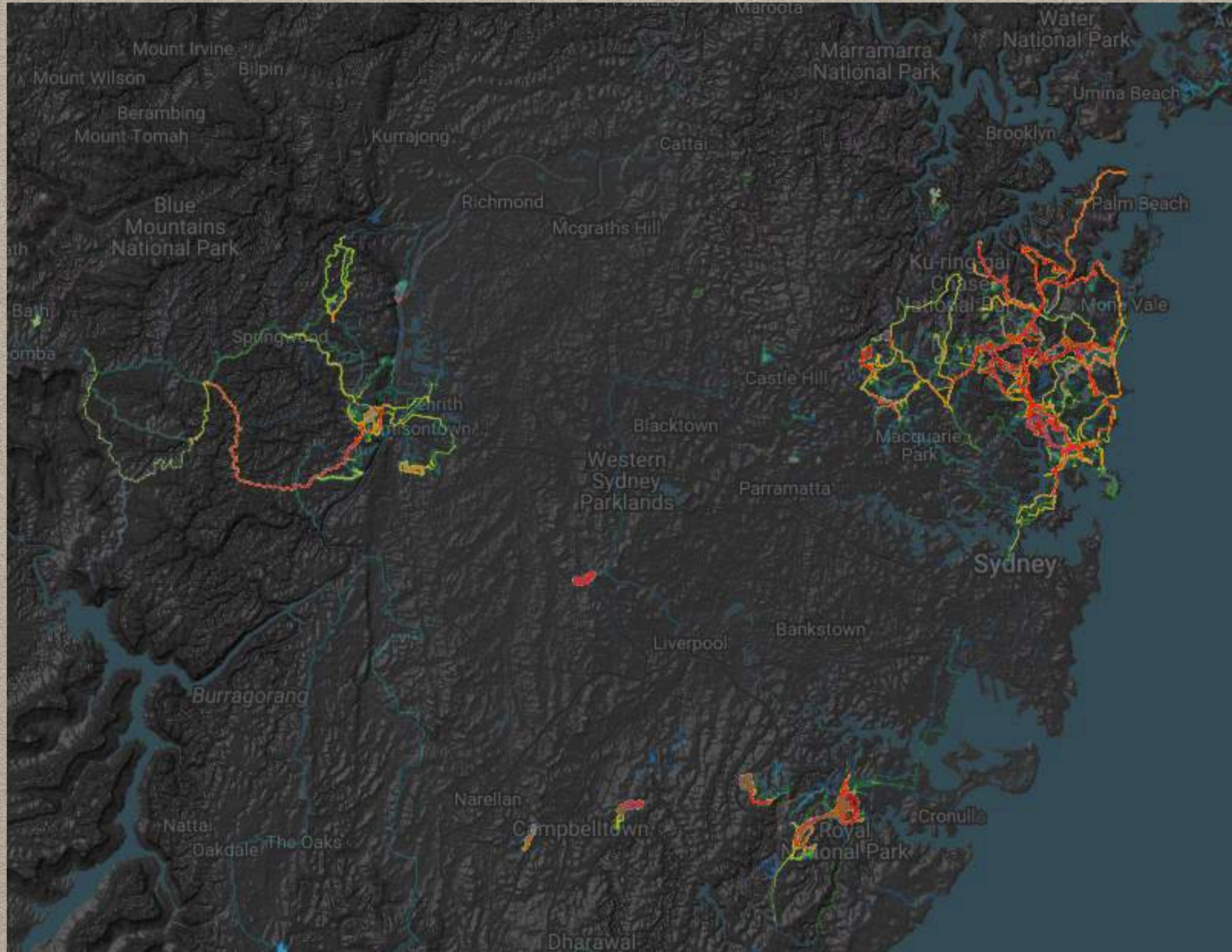
RECORD MANLY DAM TRAIL USAGE IN 2020

	Trig (Pedestrians)	Trig (Riders)
July 2018	corrupt data	
August 2018	corrupt data	
September 2018	corrupt data	
October 2018	corrupt data	
November 2018	corrupt data	
December 2018	1006	4351
January 2019	943	4773
February 2019	814	3613
March 2019	706	3335
April 2019	952	4266
May 2019	797	4005
June 2019	904	3446
TOTAL Financial Year 18/19	6,122	27,789
Average per Month	875	3970
July 2019	1156	3690
August 2019	879	4065
September 2019	1069	3185
October 2019	1176	4024
November 2019	883	4599
December 2019	1113	5140
January 2020	1167	4675
February 2020	612	2657
March 2020	928	4155
April 2020	2132	10434
May 2020	1801	9704
June 2020	1113	5471
TOTAL Financial Year 19/20	14,029	61,799
Average per Month	1169	5150

APRIL 2019-2020

145%
INCEASE IN USAGE

SYDNEY REGION MOUNTAIN BIKE HEAT MAP



The Northern Beaches is by far the most popular off-road riding destination in the Sydney region.

RIDING BENEFITS

- Mental Health
- Physical Health
- Helps Local Economy
- Employment Opportunities

Trailforks Heat Map, Oct 2020

LOCAL CLUBS



MANLY
WARRINGAH CYCLE CLUB



TWILIGHT
SHORT TRACK
RACING



LOCAL CLUBS

Manly Dam MTB Volunteers

Private group · 415 members



BEFORE



AFTER



MOUNTAIN BIKE DISCIPLINES



IMBA Trail Difficulty Rating System					I M B A	
						
	EASIEST WHITE CIRCLE	EASY GREEN CIRCLE	MORE DIFFICULT BLUE SQUARE	VERY DIFFICULT BLACK DIAMOND	EXTREMELY DIFFICULT DBL. BLACK DIAMOND	

**MOUNTAIN BIKING IS A RECREATION, NOT A SPORT.
(SIMILAR TO SURFING, WALKING, OCEAN SWIMMING
& ROCK CLIMBING)**

NORTHERN BEACHES TRAIL NETWORK

Narrabeen Lagoon
Beginner/ Families
Recreational



Terrey Hills
Beginners
Pump Track/ BMX



Manly Dam
Intermediate
Cross Country



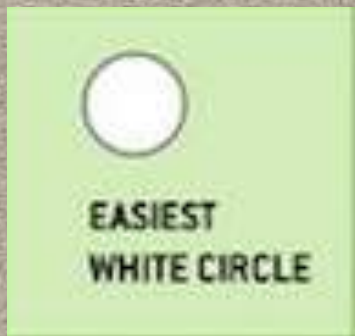
Bare Creek
Expert
Jumps



Mona Vale Downhill
Expert
Downhill



RIDING SKILLS PROGRESSION



**EASIEST
WHITE CIRCLE**



**EASY
GREEN CIRCLE**



**MORE DIFFICULT
BLUE SQUARE**



**VERY DIFFICULT
BLACK DIAMOND**



**EXTREMELY DIFFICULT
DBL. BLACK DIAMOND**

MANLY DAM MOUNTAIN BIKE TRACK VISION

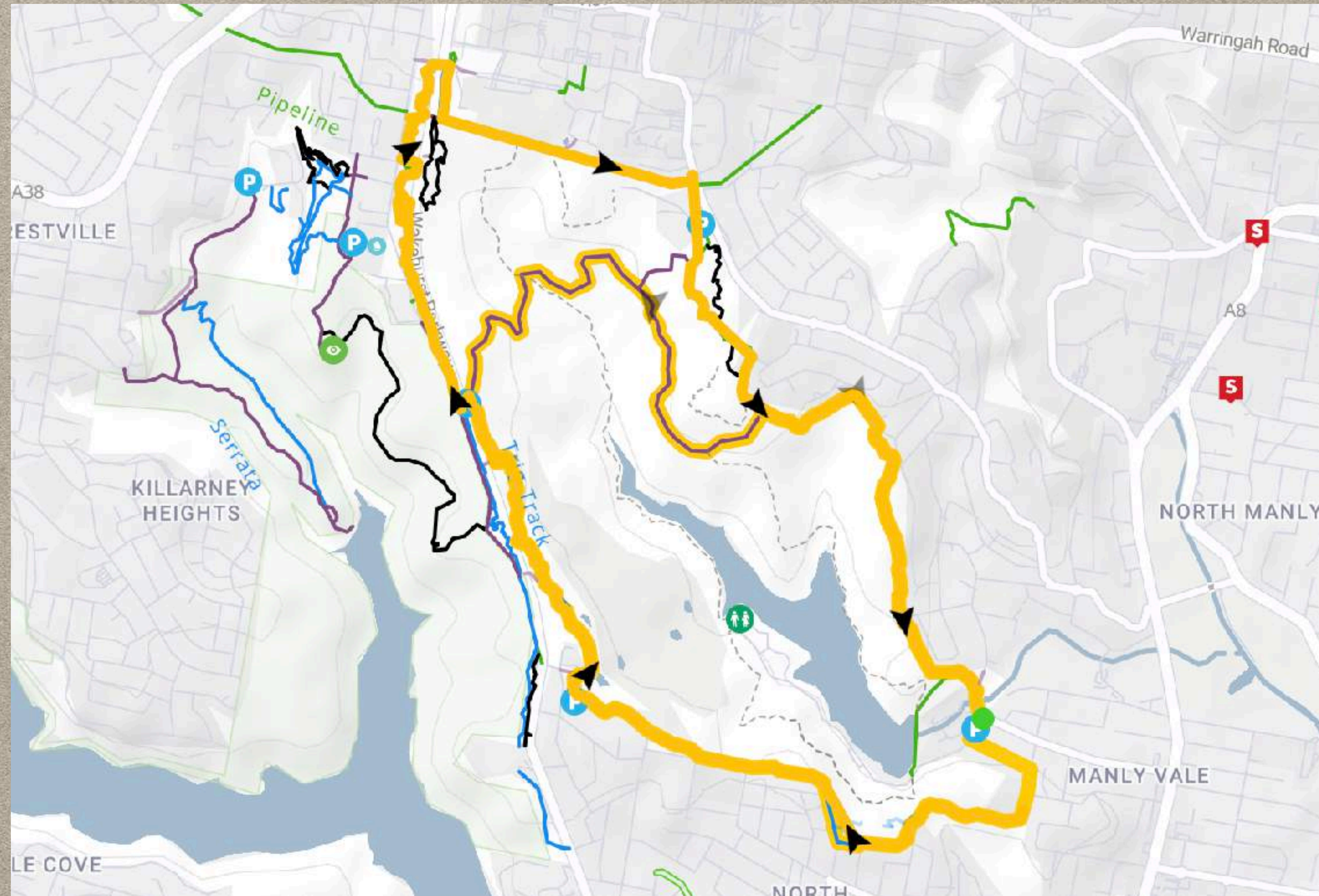
- We believe Manly Dam should be an intermediate grade, flowing single track loop
 - All weather
 - All off-road (Remove four road sections)
 - Environmentally sustainable
- Increased ratio of single track
- Protection from Beaches Link construction
- Formalise extended loop & connections to Bantry Bay.



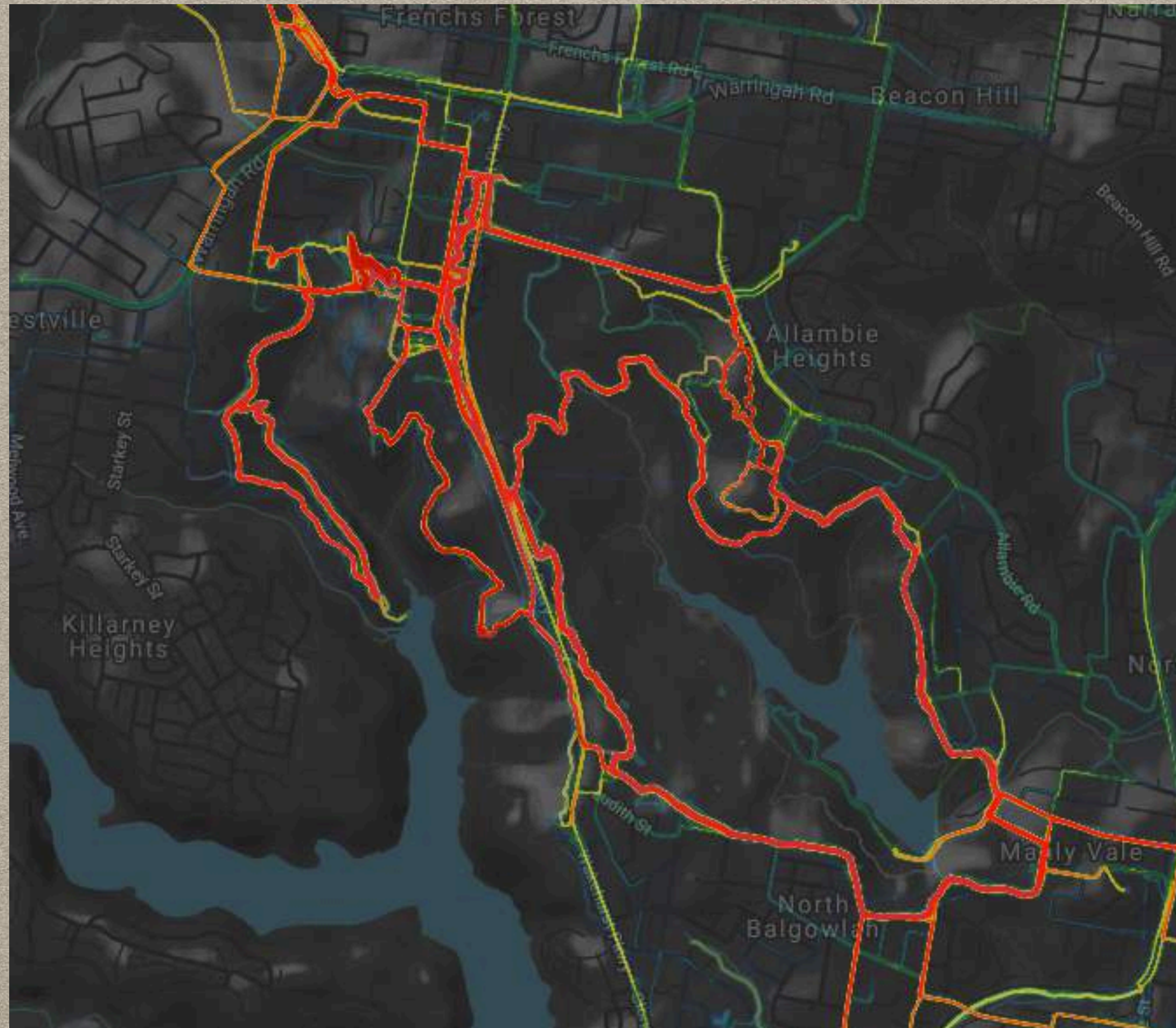
- Road sections of mountain bike track
- Under threat from Beaches Link

MANLY DAM MOUNTAIN BIKE TRACK

- Informal trails/ Manly Dam extended loop



MANLY DAM AREA MOUNTAIN BIKE HEAT MAP

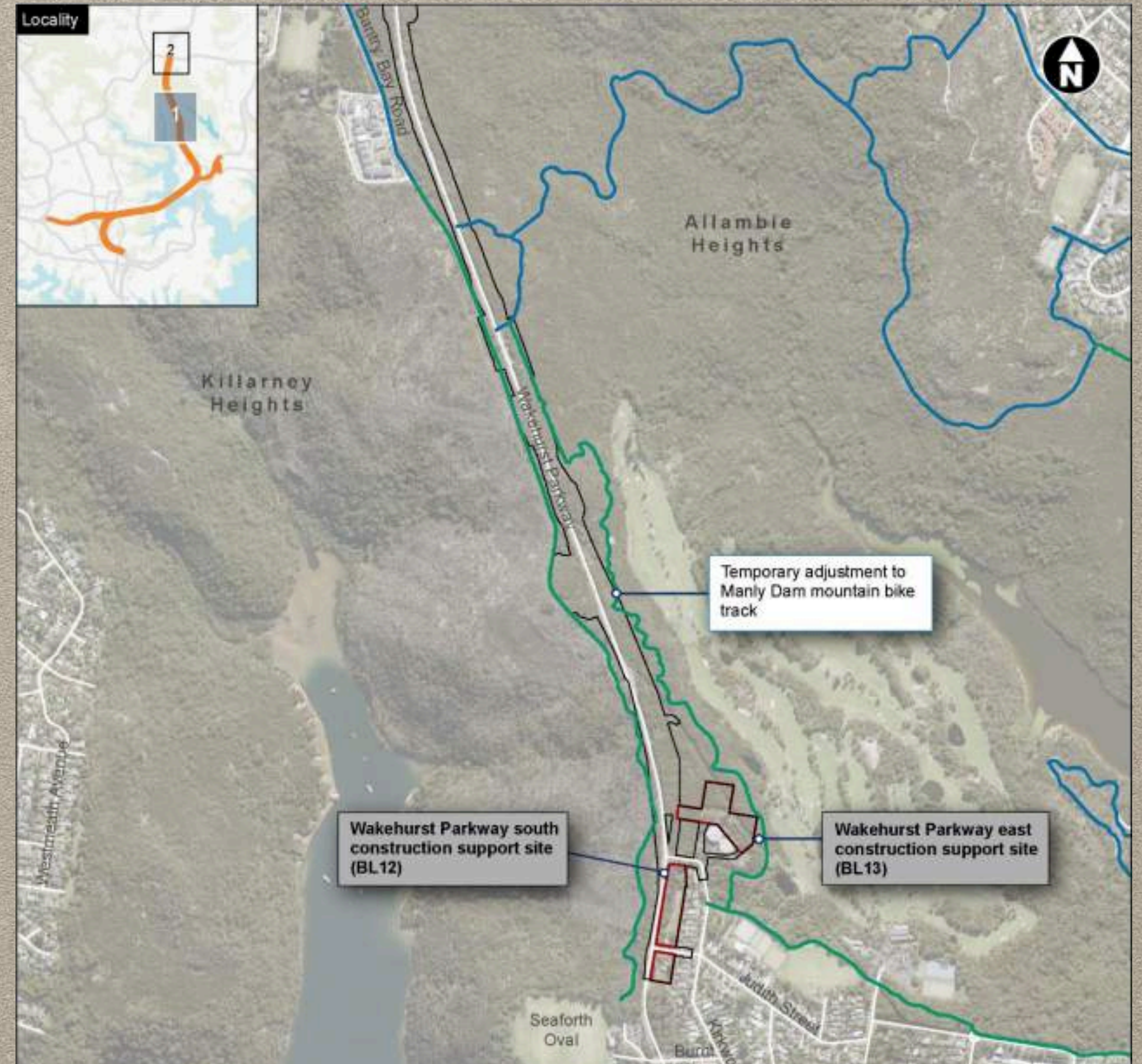


The informal trails are just as popular as the formal Manly Dam loop and should be included in the upcoming trail audit.

Trailforks Heat Map, Oct 2020

MANLY DAM MOUNTAIN BIKE TRACK

- Manly Dam & informal connecting trails are under threat from Beaches Link Tunnel Project



PROPOSED IMMEDIATE ACTIONS MAINTENANCE

(AS DISCUSSED WITH COUNCIL ON SITE VISIT 6TH NOVEMBER 2020)

- **Emergency Maintenance**

- Volunteer & Contractor actions as laid out in volunteer supplied maintenance audit

- **Signage**

- Maps/ Rules at main entrances

- **North Balgowlah trail realignment**

- As recommended in 2014 POM TT16

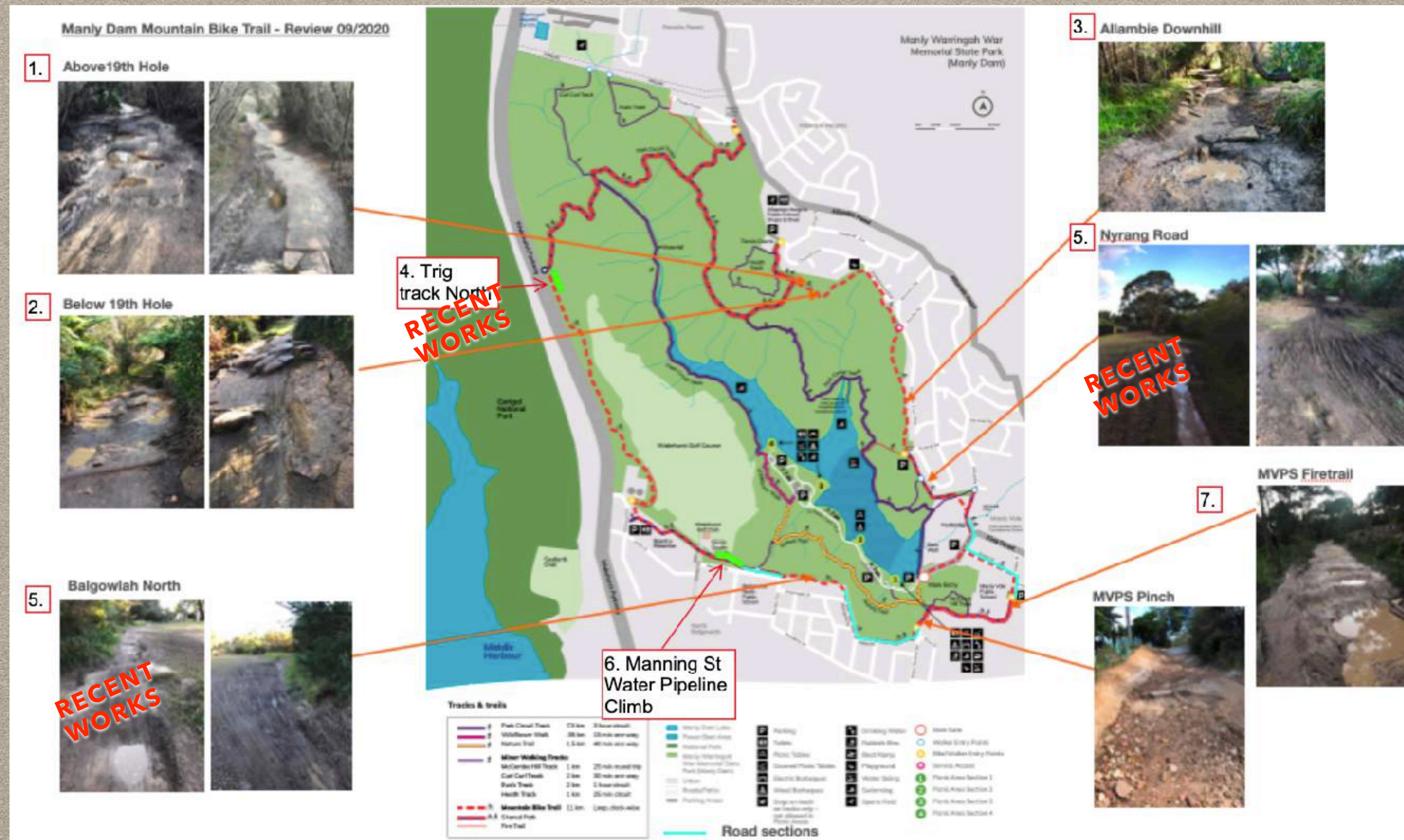
TT16	Investigate the practicality and implications of relocating that section of the identified mountain biking loop now located outside the Park along the northside of Manning Street (opposite Balgowlah North Public School) to a new section of mountain bike only track a short distance inside the Park boundary in this area. Implement if feasible, and the environmental impacts are acceptable and funding available. (D, A)	Negligible (Moderate if to be implemented)	HIGH	Trust Park management
------	--	---	------	--------------------------

- **Manly Vale 'pinch' climb**

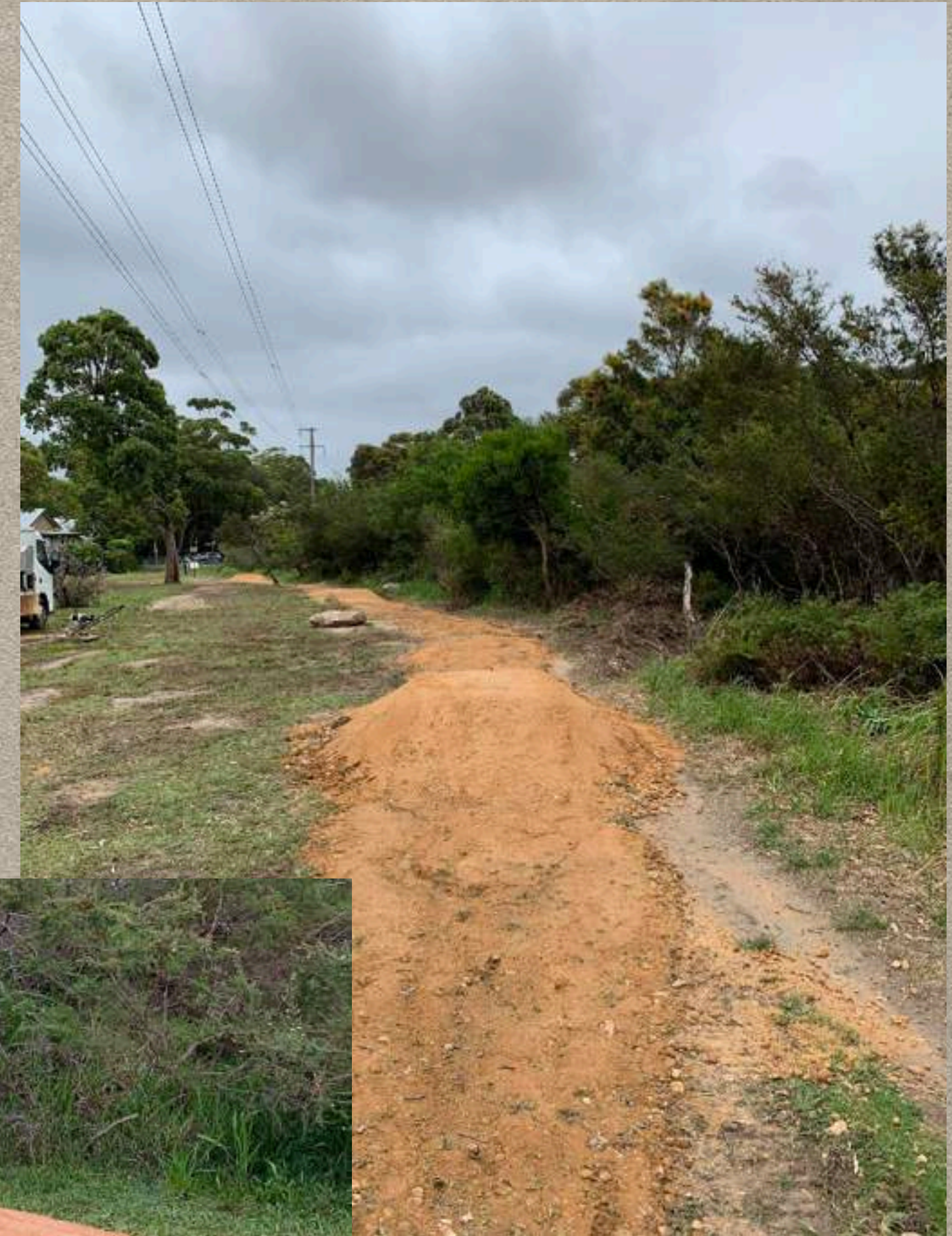
- Chase up RFS budget to fix

TT24	Liaise with other agencies (such as the Rural Fire Service, electricity utilities and Sydney Water - refer section U1) as required regarding maintenance scheduling, standards and environmental safeguards that should, preferably, be applied on those sections of the Park's fire trail and tracks network that are subject to maintenance by other agencies.	Negligible	Medium continuing	Park management Council Other agencies
------	--	------------	----------------------	--

**REFERENCE - MANLY DAM MAINTENANCE AUDIT 2020
(CREATED BY MANLY DAM MTB VOLUNTEERS)**



REFERENCE - MANLY DAM MAINTENANCE AUDIT 2020 (UPDATE - RECENT WORKS)



PROPOSED ACTIONS

MANAGEMENT

- **Park Management**

- Fresh blood and development of a service culture in council management of park.
- Revise processes to reward action & execution rather than endless unfulfilled documentation.
- More proactive management of trails, including swift closure of trail in wet conditions and better communication of this.
- Potential for self management by riding community to successfully meet POM guidelines.

- **Trail Audit**

TT21	The approved mountain biking loop and other tracks/trails may be temporarily closed due to wet weather, for maintenance or other Park management operations, for visitor safety, or as determined by the Park Manager. Closures of the mountain biking track will be notified via Council's web site and social media (A, B, D, E)	Negligible	HIGH continuing	Park management Council
------	--	------------	---------------------------	----------------------------

- Include local connected network of informal trails (Possum/ Pipeline/ Nemesis etc) in scope of upcoming Trail Audit.

- **Budgets**

- Separate 'non rolled up' line item in council finances for annual mountain bike trail maintenance budget.

- **Representation**

- Better representation of mountain biker community concerns on advisory committee & council.

- **Committee Access**

- Publicly accessible email contact for community reps and clear details online for requesting guest speakers.

RIDING COMMUNITY QUESTIONS TO COMMITTEE

• VISION

- What is the Committee's vision for the future of Mountain Biking within Manly Dam?
- Will Council be increasing cap-ex and maintenance budgets for Manly Dam now its usage is booming and Narrabeen Lagoon is complete?
- Can inefficient council processes be streamlined to deliver better service to ratepayers?

• POM 2014

- Why are 'high priority' items from 2014's POM still not executed?

• BEACHES LINK/ WAKEHURST PARKWAY

- Will Trig Track and Possum survive the upcoming road expansion?
- Does Council have plans to keep the trail operational during construction?

EIS - EFFECTD BY
CONSTRUCTION

THANKS FOR LISTENING

**LETS MAKE MANLY DAM MOUNTAIN BIKE TRACK
SYDNEY'S BEST INTERMEDIATE TRAIL
AND SUPPORT THE LOCAL RIDING COMMUNITY**

