



northern
beaches
council

MINUTES

NARRABEEN LAGOON STATE PARK ADVISORY COMMITTEE

HELD ON THURSDAY 8 JULY 2021

Committee Members

Voting Members

Northern Beaches Council – Chair	Michael Regan
Northern Beaches Council CEO representative	Mr Todd Dickinson
Metropolitan Local Aboriginal Land Council	Mr Allen Madden / Mr Nathan Moran
Office of Environment and Heritage – National Parks	Mr Peter Bergman
Department of Industry - Lands	Mr Stan Rees
NSW Department of Primary Industries (Fisheries)	Ms Sarah Conacher
Community Representative – Environment	Dr Conny Harris
Community Representative – Business	vacant
Community Representative – Recreation	Ms Julie Whitfield
Community Representative – Rate Payer / Community	Ms Pamela Johnston

Officers

Manager Coast and Catchments	Ms Jodie Crawford
Senior Environment Officer – Catchments	Ms Sue Jacobs

Quorum

At least half the total number of members, including a Crown Land Manager representative and the Chair (or delegate).

**Minutes of the
Narrabeen Lagoon State Park Advisory Committee
held on Thursday 8 July 2021
via Teams
Commencing at 4:00pm**

1. ACKNOWLEDGEMENT OF COUNTRY

2. PRESENT

Mayor Michael Reagan (Chair), Mr Todd Dickinson (Crown Land Manager representative), Mr Peter Bergman, Mr Stan Rees, Ms Sarah Conacher, Dr Conny Harris, Ms Julie Whitfield, Ms Pamela Johnston, Ms Jodie Crawford, Ms Sue Jacobs.

VISITORS: Mr Duncan Howley, Mr Jeremy Smith, Mr James Leigh, Mr Damian Ham

Meeting opened at 4:05pm

2.1 Apologies

Nil

3. DECLARATION OF PECUNIARY AND CONFLICTS OF INTEREST

Nil

4. CONFIRMATION of minutes of previous meeting

Minutes of Narrabeen Lagoon State Park Advisory Committee meeting held 9 September 2019 were confirmed as correct by Julie Whitfield and seconded by Michael Regan.

5. UPDATE ON ACTIONS FROM LAST MEETING

5.1 Open Space Strategy site visit

A draft Open Space Strategy will go to Council for approval to exhibit later this year. An update will be given to this Committee following approval to exhibit.

Resolution: That the Advisory Committee note this update.

6. AGENDA ITEMS

6.1 Waterbody Management

Entrance Management

Duncan Howley gave an update on Council's approach to managing the Narrabeen Lagoon entrance, and provided information on the exhibition of the options paper. Ms Johnston of the Narrabeen Lakes Sailing Club asked about consultation with the Club and Mr Howley undertook to follow this up with Ms Johnston. Council will continue to investigate potential ways to manage the entrance, including emergency response arrangements, clearance work improvement and the long-term costs and sustainability of entrance-specific options. The

environmental and recreational impacts of different options were discussed. Mr Howley also provided a summary of the next steps in the development of the Strategy.

The presentation also included information on the entrance clearance which is planned for later this year.

Resolution: That the Advisory Committee note this update.

6.2 Foreshore Management Issues

Narrabeen Lagoon Bridge

Jeremy Smith gave an update on the proposed construction of a pedestrian bridge adjacent to the Pittwater Road bridge at North Narrabeen.

Resolution: That the Advisory Committee note this update.

6.3 Catchment Management Issues

Wakehurst Parkway Flood Mitigation

James Leigh gave a presentation on the investigations into flood mitigation for Wakehurst Parkway. A feasibility study which explores options to address problem flooding is currently on public exhibition. It was noted that there would be significant environmental impacts if the project proceeds, and that these would be assessed in the next stage of the project.

Resolution: That the Advisory Committee note this information.

Mountain Biking

Damian Ham gave a presentation on mountain biking within the catchment and progress on managing the issues of unauthorised trails. This issue affects both Council and National Parks. A number of actions were identified, including authorising some trails and closing others, in consultation with user groups. The committee congratulated Council on its approach to managing such a difficult issue.

Resolution: That the Advisory Committee note this information.

Fire Management

Peter Bergman gave a brief outline of the approach to fire management in the catchment. Fire management strategies are developed by the Bushfire Management Committee based on a wide range of factors including fire history, vegetation type and asset protection needs. This results in a mosaic pattern of age classes.

Resolution: That the Advisory Committee note this information.

7. GENERAL BUSINESS

Potential expansion of the State Park

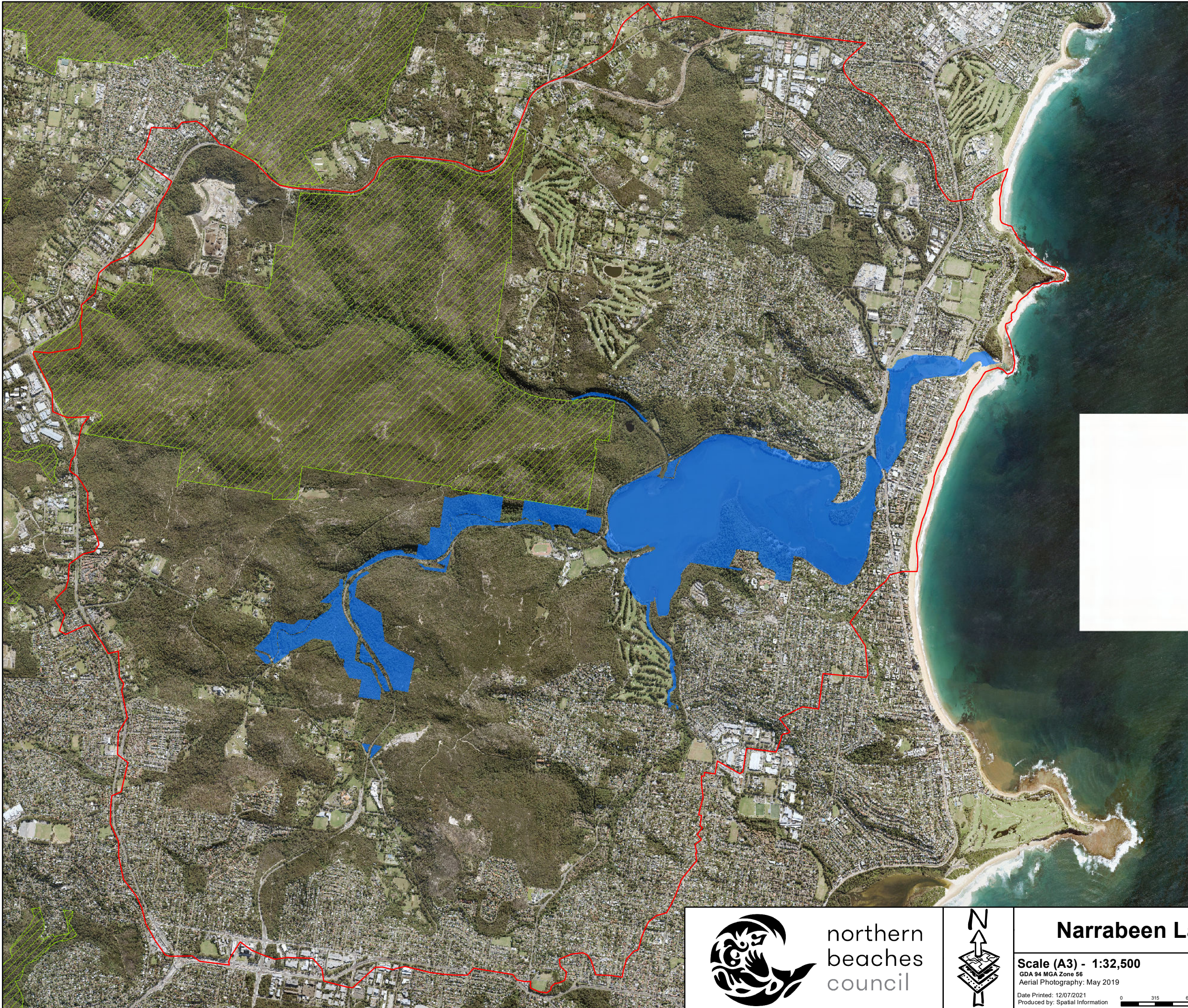
Conny Harris asked whether there is any potential to expand the State Park. The strategic importance of adding to the State Park was discussed. A number of options were raised, including purchasing land and incorporating Council land or unused Crown Land. It was decided to add this issue to the agenda for the next meeting.

Resolution: That Council list this issue in the agenda for the next meeting and DPI – Lands provide a summary of Crown Land in the catchment.

There being no further business the meeting closed at 5:56pm.

NOTE

The next meeting will be held via Teams. A date for the next meeting will be decided after the Council elections later this year.



Legend

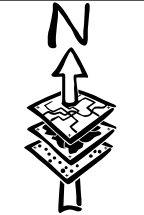
Narrabeen Lagoon State Park

Narrabeen Catchment

National Park



northern
beaches
council



Narrabeen Lagoon State Park

Scale (A3) - 1:32,500
GDA 94 MGA Zone 56
Aerial Photography: May 2019
Date Printed: 12/07/2021
Produced by: Spatial Information

03156301,260 Meters

The publisher of and/or contributors to this map accept no responsibility for injury, loss or damage arising from its use or errors or omissions therein. While all care is taken to ensure a high degree of accuracy, users are invited to report any map discrepancies and should use this map with due care.

© Northern Beaches Council 2021

Narrabeen Lagoon entrance management

08 July 2021



Narrabeen Lagoon Entrance Management Strategy

Short Term Management

- Flood emergency response arrangements
- Identification of innovative techniques
- Opportunities to monitor sand ingress
- Draft report due October 2020



Medium Term Management

- Opportunities to streamline entrance clearance
- Identify optimum design, frequency and any alternative options
- Draft report due October 2020



Long Term Management

- Investigation of long term management options
- Development of Strategic Business case for preferred option
- Draft report due February 2021



Update

- Initial Community Consultation - February and March 2021
- Outcomes and alternative options being investigated



Consultation

- Online interactive report
- Your Say webpage with video
- Letter sent to 3,000 residents
- Email to targeted stakeholders
- Media release, Council News Story, and email distribution lists
- Face-to-face meetings with Council staff
- Call back appointments with Council staff

iReport platform

Narrabeen Lagoon Entrance Management Strategy



[Home](#) [Background](#) [Council's current management practices](#) [Entrance Management Options](#)

Home

Northern Beaches Council is preparing a strategy to establish the most effective management regime for Narrabeen Lagoon entrance.

As part of this project, we are investigating all aspects of entrance management, including emergency response arrangements, clearance work improvements and the long-term costs and sustainability of entrance-specific options.

We have prepared this options paper to provide an opportunity for our community to learn more about how the lagoon entrance is currently managed and provide feedback on the potential ways it could be managed in the future.

The options paper is divided into three sections:

Background about Narrabeen Lagoon entrance

Council's current entrance management practices

Entrance management options

HOW TO READ THIS OPTIONS PAPER:

Click on the tabs at the top of the page to read the content of each section.

To learn more about the management of Narrabeen Lagoon entrance watch the Explainer video.



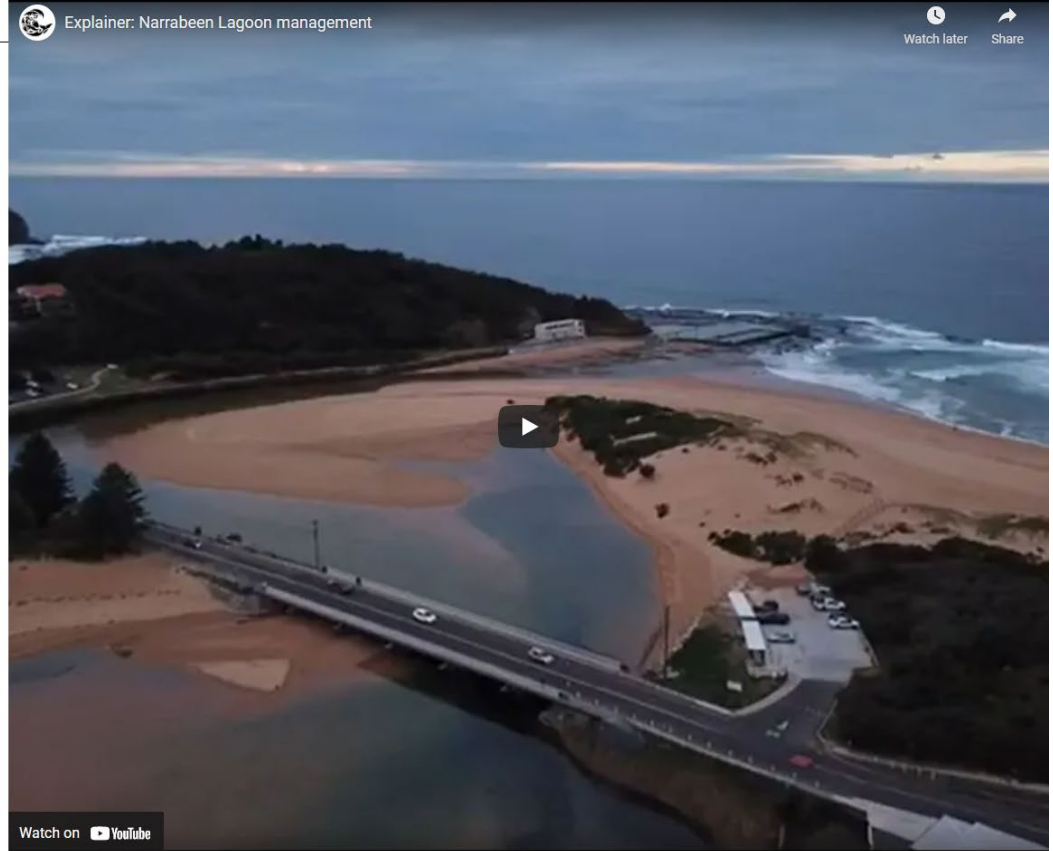
Explainer: Narrabeen Lagoon management




Watch later



Share



Watch on  YouTube

Results of community consultation

- 95 Your Say platform submissions
- 16 emailed and written submissions
- 3 stakeholder submissions:
 - Surfrider Foundation
 - Manly Warringah Kayak Club
 - Cromer Golf Club

Key themes

Submission	Detail
Sand pumping support	Of the long term options, sand pumping was the most supported option. It needs to be stressed that it involves a discrete operation rather than a continuous system
Entrance to be kept open	Many submissions outlined the benefit of open entrance conditions and that options that assist in keeping the entrance open be considered
Western basin dredging	Dredging of the western basin of the lagoon will be unlikely to reduce flood risk or improve water quality. Was previously investigated by Warringah Council
Improvements to entrance clearance	Currently considering the benefit of undertaking a smaller clearance more often to keep the lagoon in a less accreted state
Alternative option	A number of alternative options were recommended for Council and the Consultant to review.

Narrabeen Lagoon entrance clearance

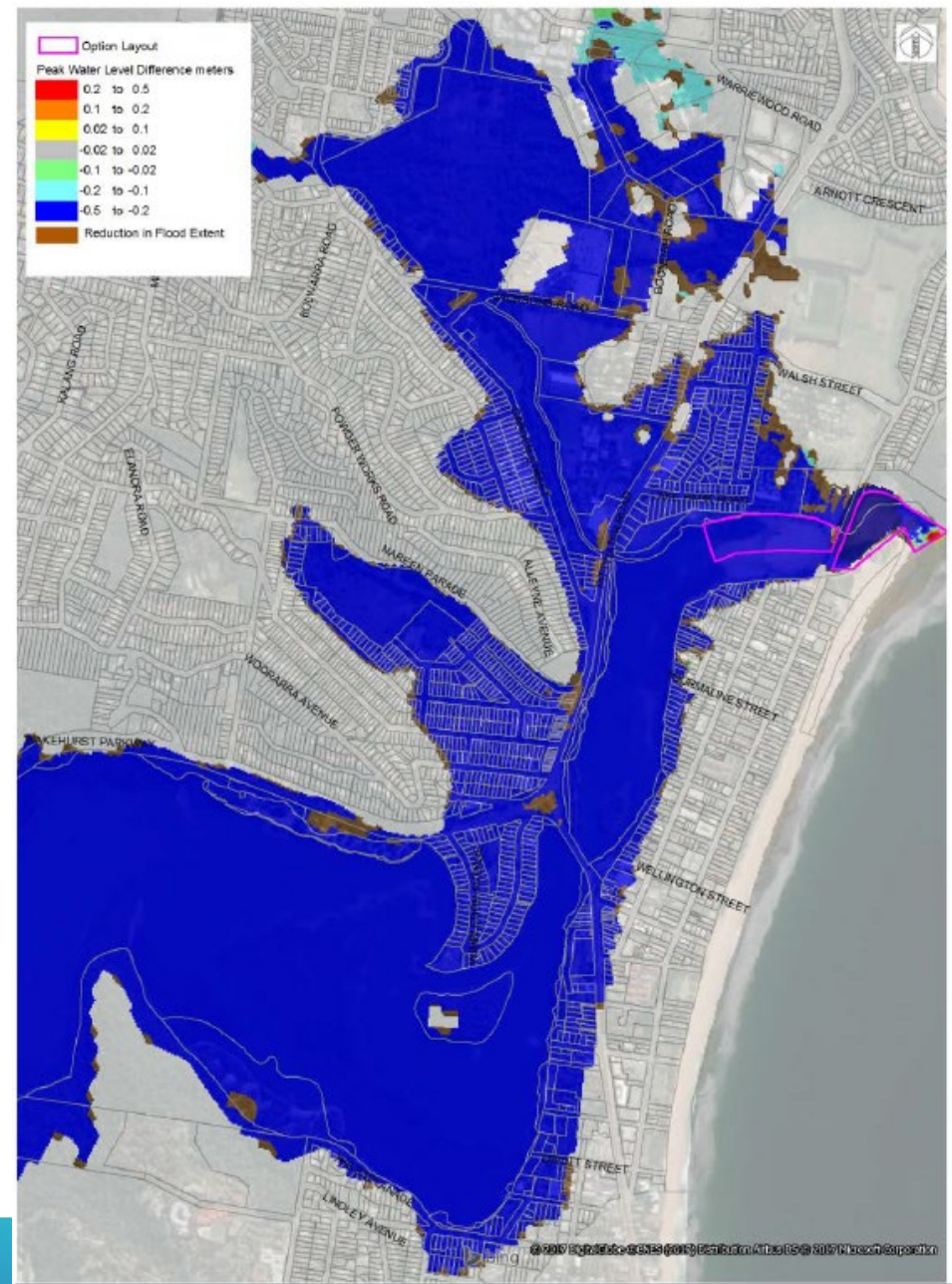
Background

- Excavation of 30,000-50,000m³ of sediment from Narrabeen Lagoon entrance
- Sediment placed and spread on Collaroy-Narrabeen Beach
- Occurs on average every 3-5 years
- Last completed in 2018



Objectives

- Significantly reduces flood risk
- Reduces expected flood damages in a 1% event by \$11.5m



Timing

- Design currently being finalised
- Hoping to commence works August 2021
-
- Works to be complete prior to Christmas holidays





Narrabeen Lagoon Bridge

Capital Projects/ Park Assets



northern
beaches
council

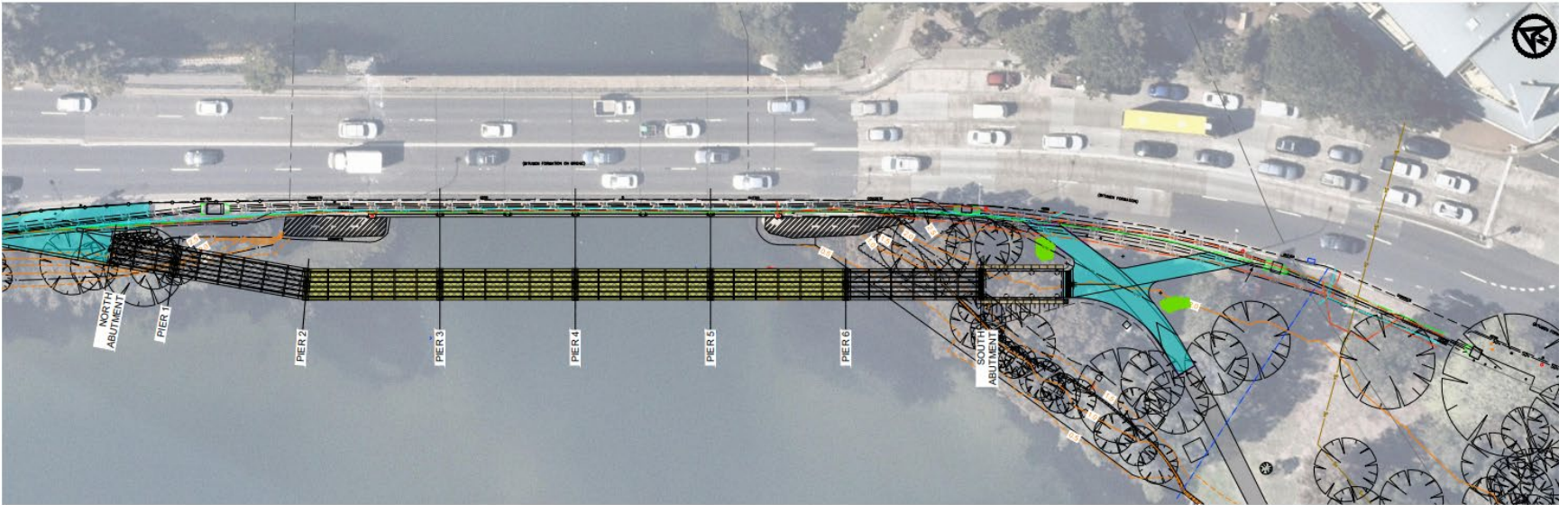
Items to consider

- Significant recreational benefit when finished
- Minimum environmental footprint
- Built in profile of existing bridge
- Disruption during construction

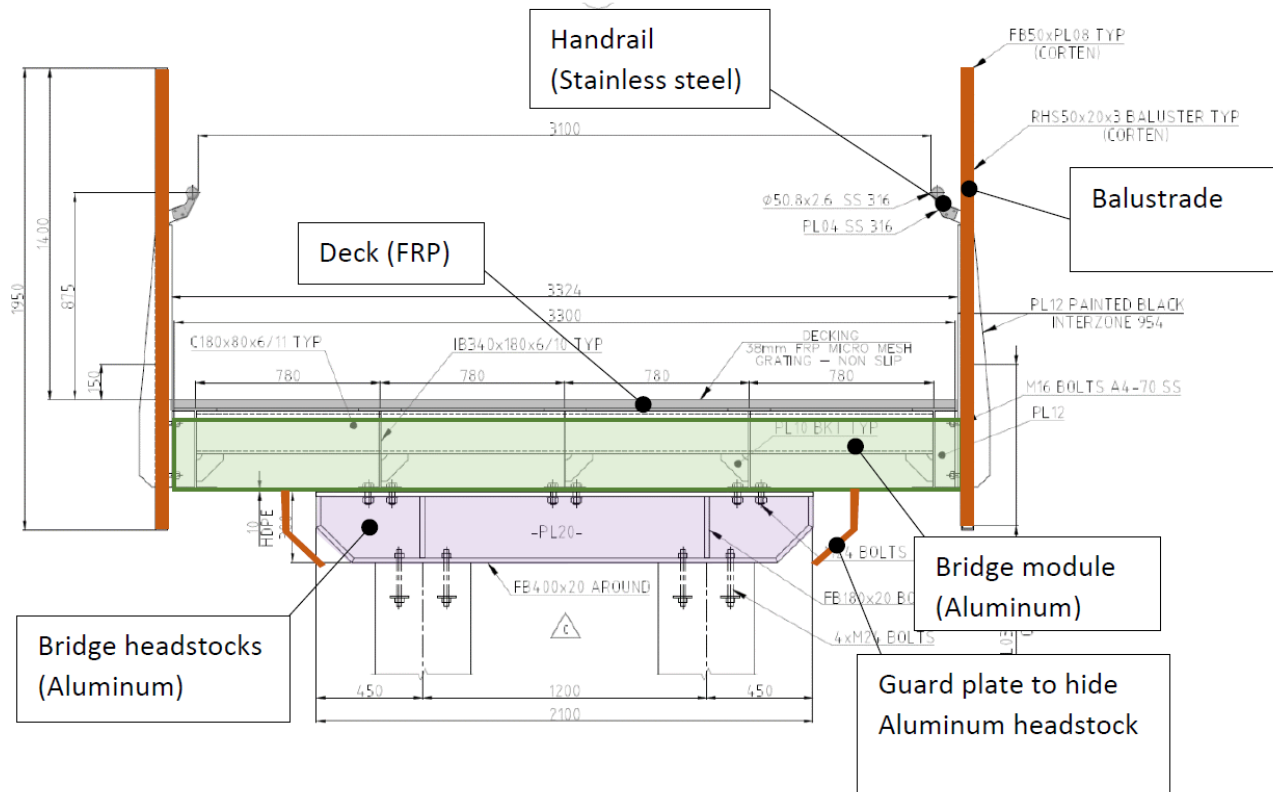
Current status

- Contractor about to be appointed
- Detailed design pending approval
- Work on site to commence spring 2021

Design – plan view



Design – section view



Location and work sites



Questions?

Wakehurst Parkway Flood Investigations

8 July 2021

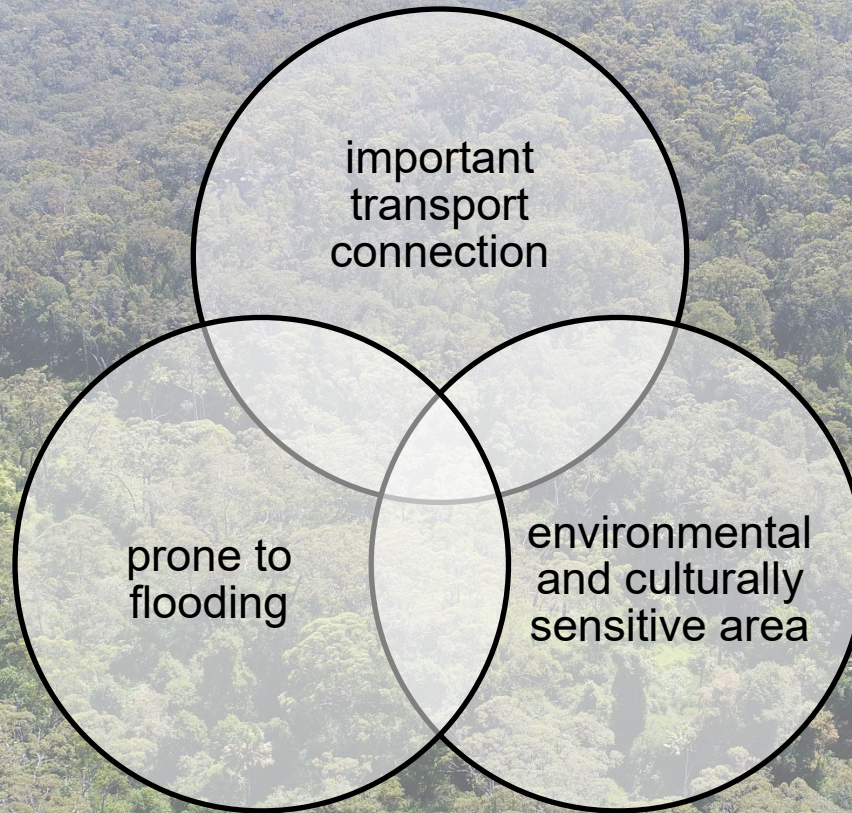


Introduction & Project Overview

James Leigh

Manager Stormwater & Floodplain Engineering

Wakehurst Parkway – overview



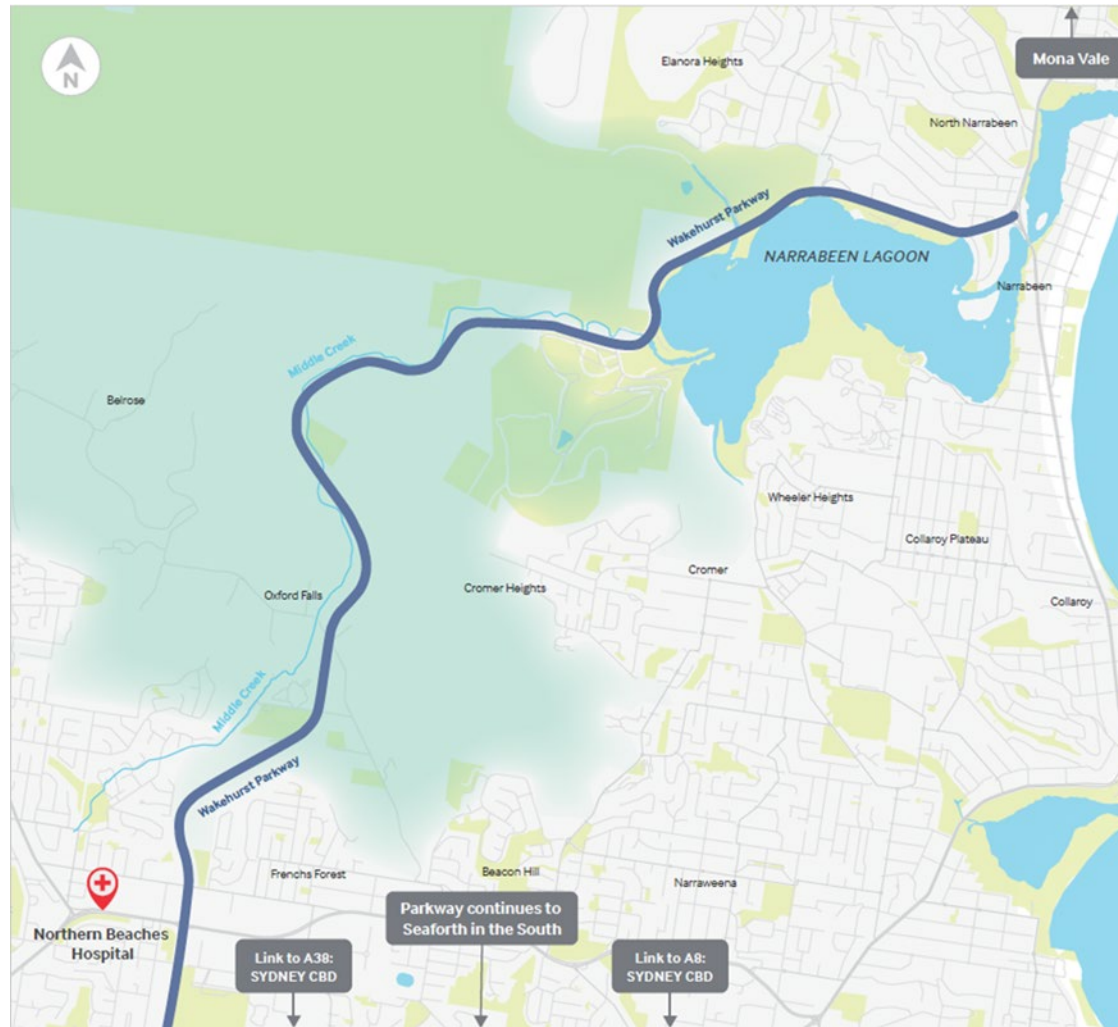
Timeline

- ✓ Dec 2017: Stronger Community Fund - grants awarded
- ✓ Mid 2017 - Apr 2018: Initial investigations and data collection
- ✓ Apr 2018 - Dec 2019: Detailed analysis and options development
- ✓ Dec 2019: Council wrote to TfNSW requesting additional funding
- ✓ Nov 2020: Funding announced in NSW budget
- ✓ Mar 2021: Formal funding offer received from TfNSW
- ✓ Apr 2021: Council conditionally accepts funding offer pending community consultation and extension of timeframe
- ★ May - Jun 2021: Public exhibition of the draft feasibility study
- ☆ Mid-late 2021: Council meeting to determine next steps
- ☆ Late 2021 and beyond: Next steps including further investigation (if endorsed)



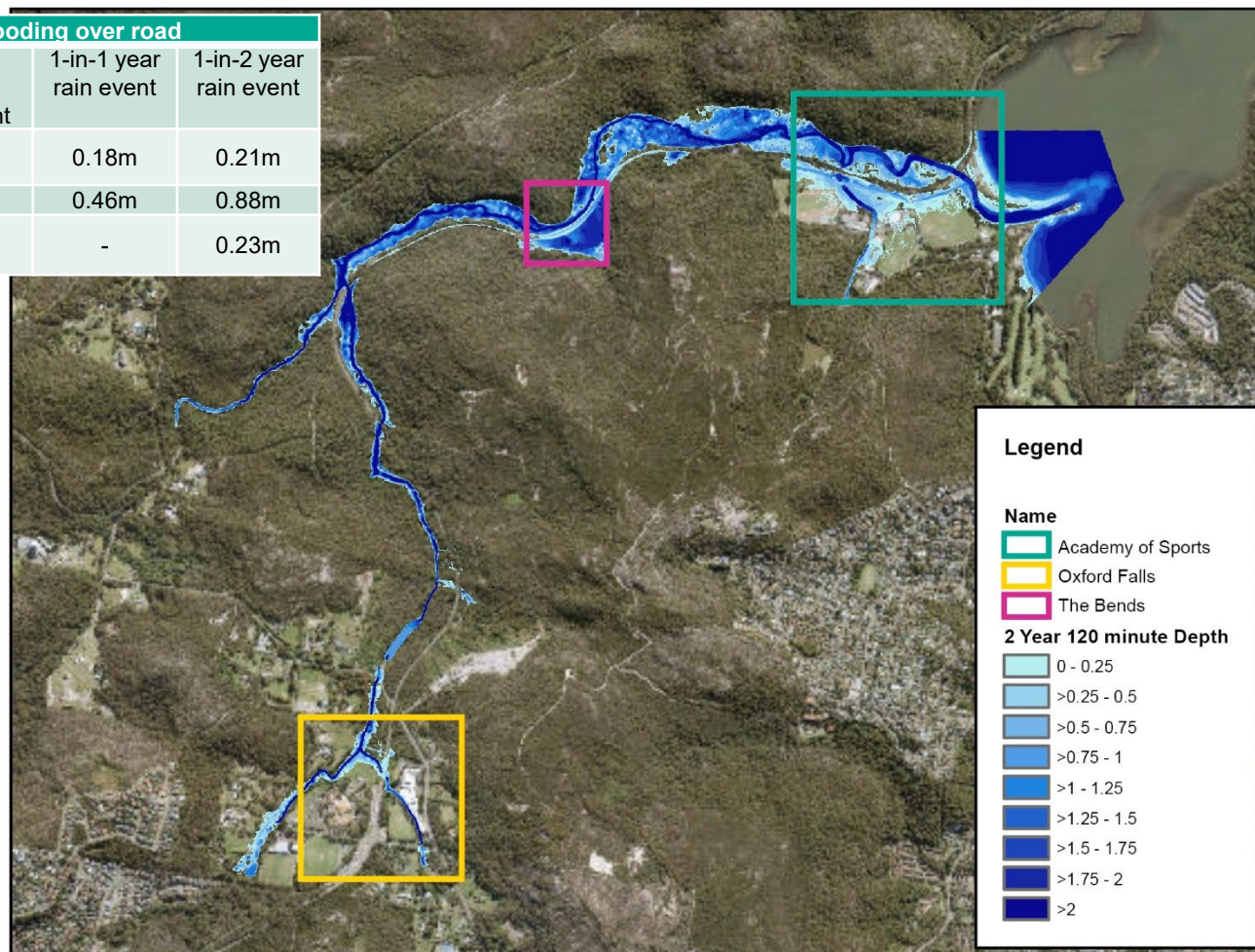
northern
beaches
council

Important connection



Prone to flooding

Case	Depth of flooding over road			
	1-in-3 month rain event	1-in-6 month rain event	1-in-1 year rain event	1-in-2 year rain event
Oxford Falls	0.06m	0.09m	0.18m	0.21m
The Bends	0.08m	0.35m	0.46m	0.88m
Academy of Sport	-	-	-	0.23m



Prone to flooding



Environmentally sensitive



Assessing the Options

Options Assessment Process

2017

The long list

Identified and refined by Cardno, Soil Conservation Service and Haskoning over 2017 and 2018, with preliminary assessment of benefits and impacts. Considered previous studies from 2009 and 2015.



Road upgrade options

- Culvert upgrades
- Improve road drainage
- Bunds
- Raise the road alignment
- New levees
- Upgrade to existing levees

Creek treatment options

- Top sand extraction (removal of overbank sediment) at specific areas of Middle Creek
- Sediment control
- Vegetation removal
- Creek restoration
- a detention basin
- Dredging
- Stabilisation of fire trails

2018

Shortlisting

The long list initially assessed for: site by site suitability and feasibility, and unacceptable risks, constraints (environmental or otherwise, and effectiveness.



Road upgrade options

- Culvert upgrades
- Improve road drainage
- Bunds
- Raise the road alignment
- New levees
- Upgrade to existing levees

Creek treatment options

- Top sand extraction (removal of overbank sediment) at specific areas of Middle Creek
- Sediment control
- Vegetation removal
- Creek restoration
- a detention basin
- Dredging
- Stabilisation of fire trails

Reasons for exclusion

- Sediment control and fire trail stabilisation considered small-creek catchment management approach would not see direct improvement to flooding.
- Creek restoration
- A detention basin the size needed not considered feasible due to size, location and other constraints.

Options grouped for flood protection for entire road: 1-in-3-month, 1-in-6-month, 1-in-1-year and 1-in-2-year flood events.

2019

Final shortlist

Work undertaken to further understand the feasibility of remaining options from the shortlist, and refine them for better comparison.



Road upgrade options

- Culvert upgrades
- Improve road drainage
- Bunds
- Raise the road alignment
- New levees
- Upgrade to existing levees

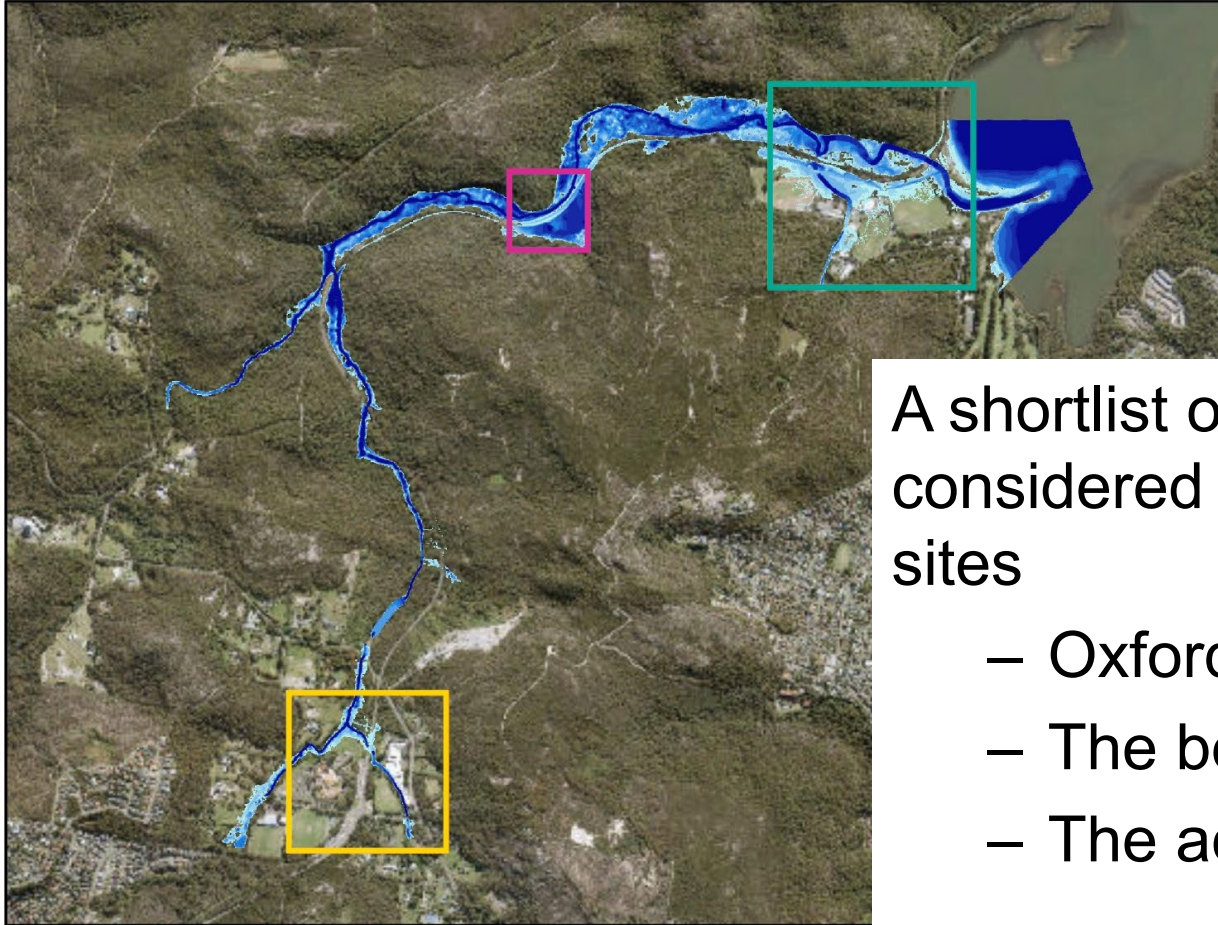
Creek treatment options

- Top sand extraction (removal of 1m overbank sediment) at targeted locations (depending on site).
- Top sand extraction (removal of 2m overbank sediment)
- New levees

Reasons for exclusion

- 2m of top sand extraction considered unfeasible: as creek is typically 1m below the overbank area, removing 2m of sediment would effectively lower the creek, with aquatic and hydraulic impacts.

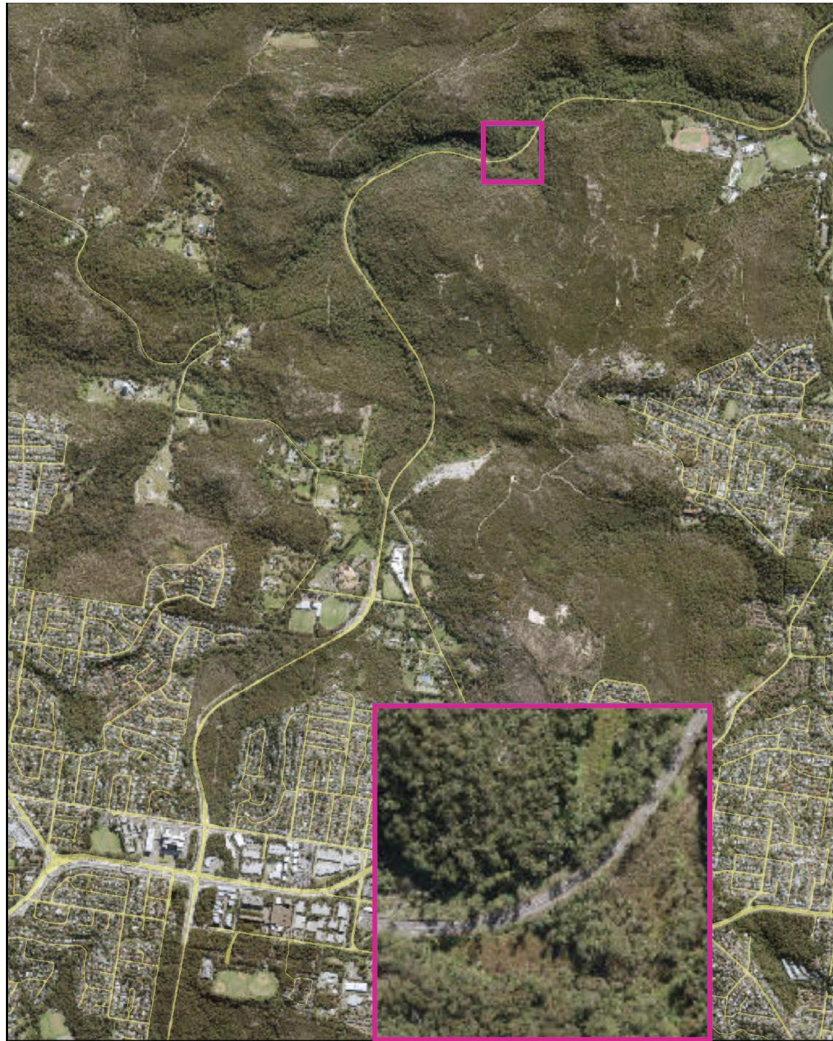
Final Shortlist



A shortlist of options were considered across 3 key sites

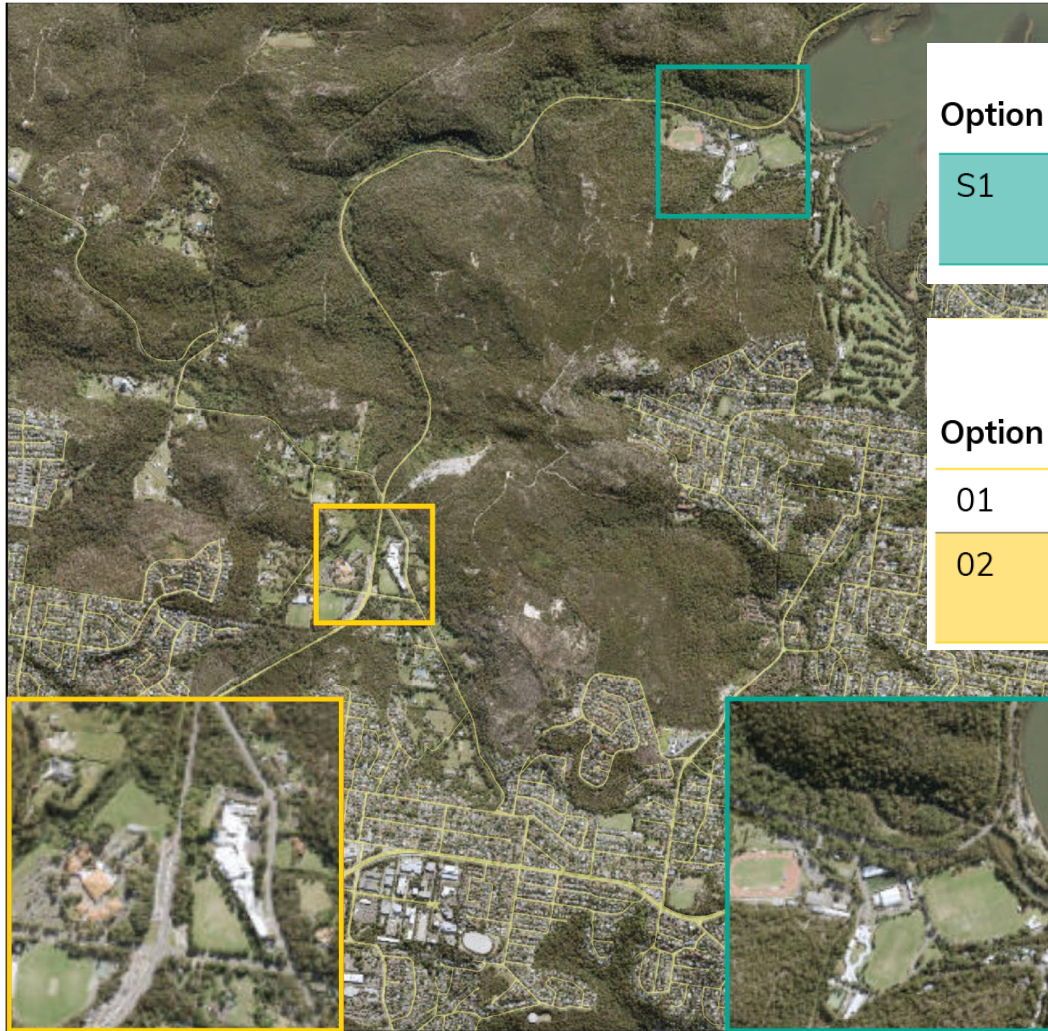
- Oxford fall
- The bends
- The academy

Shortlisted Options – The Bends



Option	Description	Flood protection offered
B1	New levee	1-in-3 month (1EY)
B2	New levee and removal of 1m depth of overbank sediment	1-in-6 month (2EY)
B3	New levee, removal of 1m depth of overbank sediment and under-road culverts	1-1 year (1EY)
B4	New levee, removal of 1m depth of overbank sediment, under road culverts, and top up of existing levee	1-in-2 year (0.5EY)
B5	Removal of overbank sediment (1m depth)	1-in-3 month (4EY)
B7	New levee, under road culverts	1-in-1 year (1EY)











Shortlisted Options – Academy of Sports & Oxford Falls



Option	Description	Flood protection offered
S1	Bunds and localised low point drainage	1-in-2 year (0.5EY)

Option	Description	Flood protection offered
01	Culvert capacity increase	1-in-1 year (1EY)
02	Culvert capacity increase (addition to A1)	1-in-2 year (0.5EY)

Options Comparison table page

	Do Nothing	1-in-3-month protection	1-in-6-month protection	1-in-1-year protection	1-in-2-year protection
Option Description	No construction options	The Bends <ul style="list-style-type: none"> • sediment removal 	The Bends <ul style="list-style-type: none"> • sediment removal • new levee Oxford Falls <ul style="list-style-type: none"> • upgrade existing culverts 	The Bends <ul style="list-style-type: none"> • sediment removal • new levee • new culverts Oxford Falls <ul style="list-style-type: none"> • upgrade existing culverts 	The Bends <ul style="list-style-type: none"> • sediment removal • new levee • new under-road culverts Oxford Falls <ul style="list-style-type: none"> • significantly upgrade existing culverts Sports Academy <ul style="list-style-type: none"> • bunds and localised low point drainage
Vegetation Cleared	none	~27,360m ²	~29,700m ²	~32,250m ²	~34,700m ²
Average road closures	6 to 7 a year	4 a year	2 a year	1 a year	1 every 2 years
Indicative cost	\$0.05M	\$4.5M 	\$7.0M  	\$13.3M   	\$17.5M    

1-in-2-year protection option

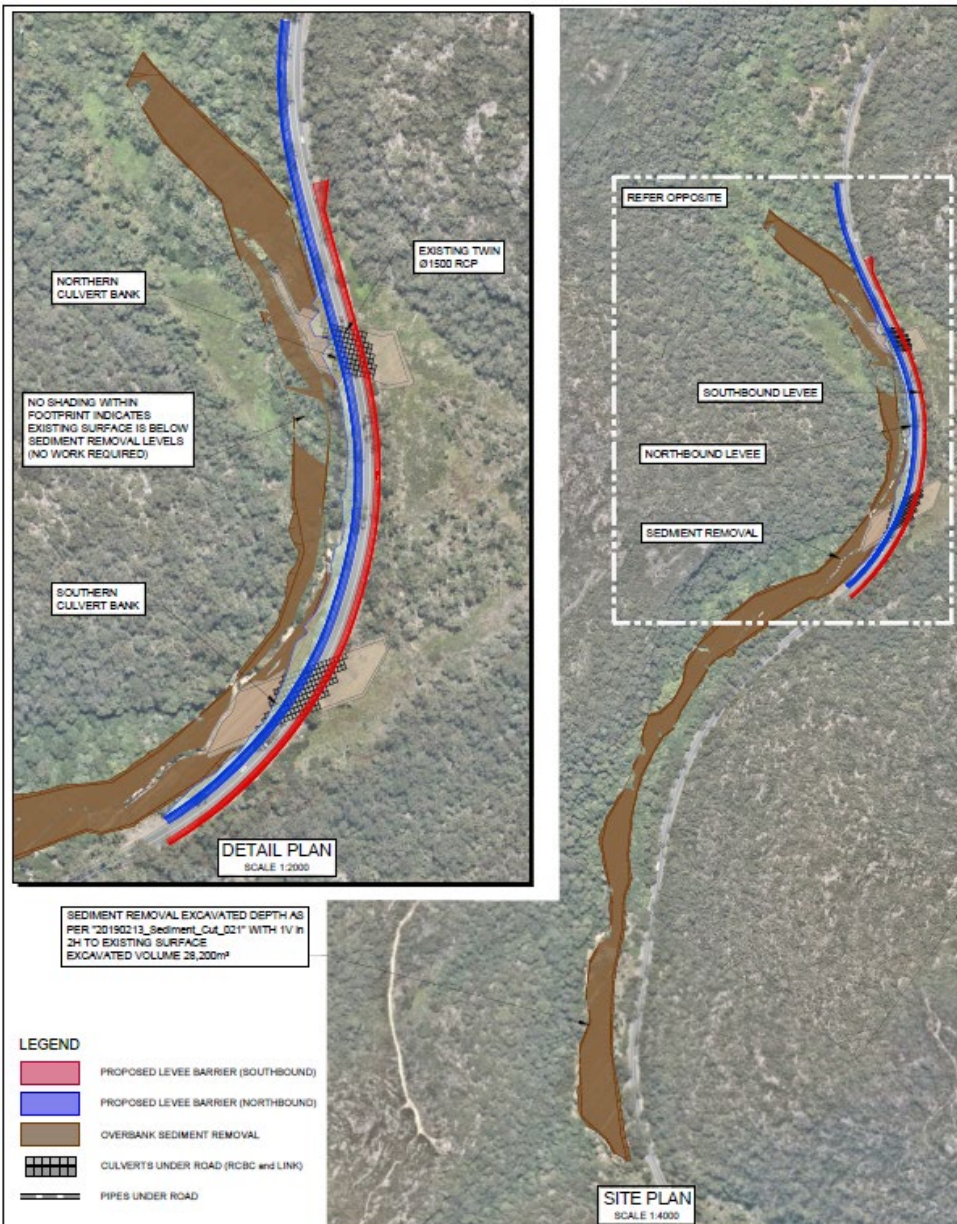
More details

What is the 1-in-2-year protection option?

A combination of site specific options which provide flood protection from a 1-in-2-year rain event

- **The Bends - Option B4** : New levee, removal of overbank sediment, under road culverts and top up of existing levee
- **Oxford Falls - Option O2** : Culvert capacity increase
- **Sydney Academy - Option S1** : Bunds and localised low drainage point

A key finding of the feasibility study was that environmental impacts are likely to be similar across all investigated levels of flood protection.



Title: Option B4 - New Levee's, Sediment Removal, Culverts

Project: Wakehurst Parkway - Option Feasibility (The Bends)

Figure:

B4

Rev:

1



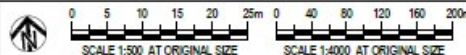
Title: Option O2 - Culvert Capacity Increase (2 Year Immunity)

Project: Wakehurst Parkway - Option Feasibility (Oxford Falls)

Figure:
O2

Rev:
1

DISCLAIMER: WHILE ALL RESPONSIBLE CARE HAS BEEN TAKEN TO ENSURE THE INFORMATION CONTAINED ON THIS MAP IS UP TO DATE AND ACCURATE, THIS MAP CONTAINS DATA FROM A NUMBER OF SOURCES. NO WARRANTY IS GIVEN THAT THE INFORMATION CONTAINED ON THIS IS FREE FROM ERRORS OR OMISSIONS. ANY LIABILITY PLACED ON SUCH INFORMATION SHALL BE AT THE SOLE RISK OF THE USER. PLEASE VERIFY THE ACCURACY OF ALL INFORMATION PRIOR TO USING IT. THIS MAP IS NOT A DESIGN DOCUMENT.



File ID: RHDH\WPA1943\Cad\Figure O.dwg



Title: Option S1 - Bunds and Localised Low Point Drainage

Project: Wakehurst Parkway - Option Feasibility (Sports Centre)

Figure:
S1

Rev:
1

DISCLAIMER: WHILE ALL RESPONSIBLE CARE HAS BEEN TAKEN TO ENSURE THE INFORMATION CONTAINED ON THIS MAP IS UP TO DATE AND ACCURATE, THIS MAP CONTAINS DATA FROM A NUMBER OF SOURCES. NO WARRANTY IS GIVEN THAT THE INFORMATION CONTAINED ON THIS MAP IS FREE FROM ERROR OR OMISSION. ANY RELIANCE PLACED ON SUCH INFORMATION SHALL BE AT THE SOLE RISK OF THE USER. PLEASE VERIFY THE ACCURACY OF ALL INFORMATION PRIOR TO USING IT. THIS MAP IS NOT A DESIGN DOCUMENT.



0 10 20 30 40 50m
SCALE 1:1000 AT ORIGINAL SIZE

0 40 80 120 160 200m
SCALE 1:4000 AT ORIGINAL SIZE

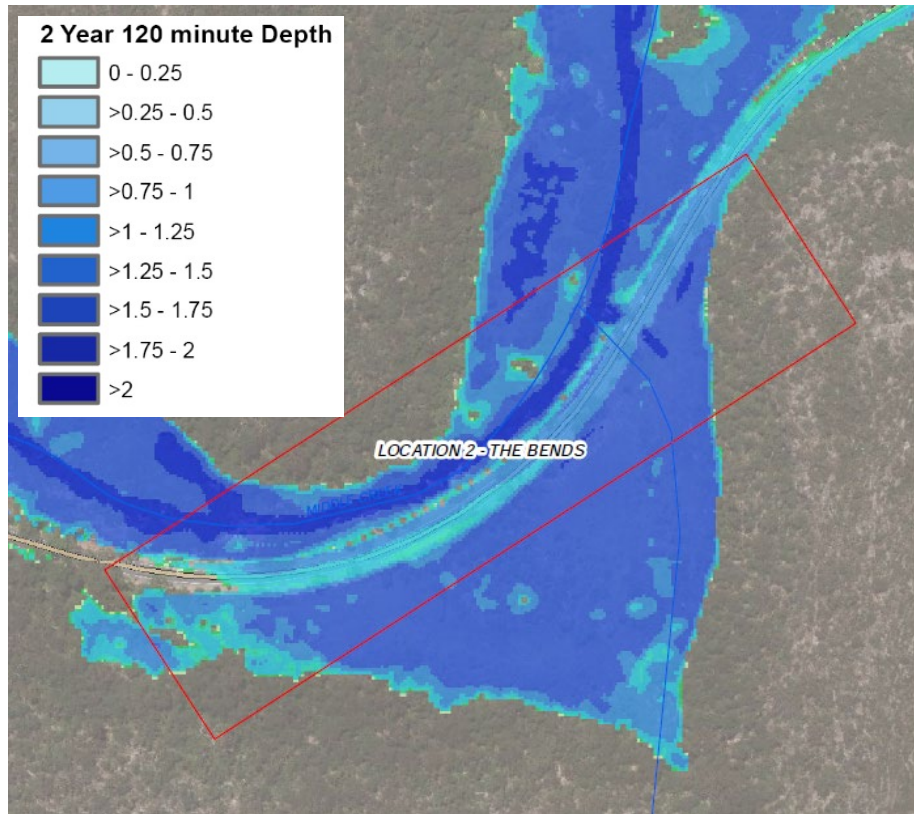
File ID: RHDHV\PA1943\Cad\Figure S.dwg



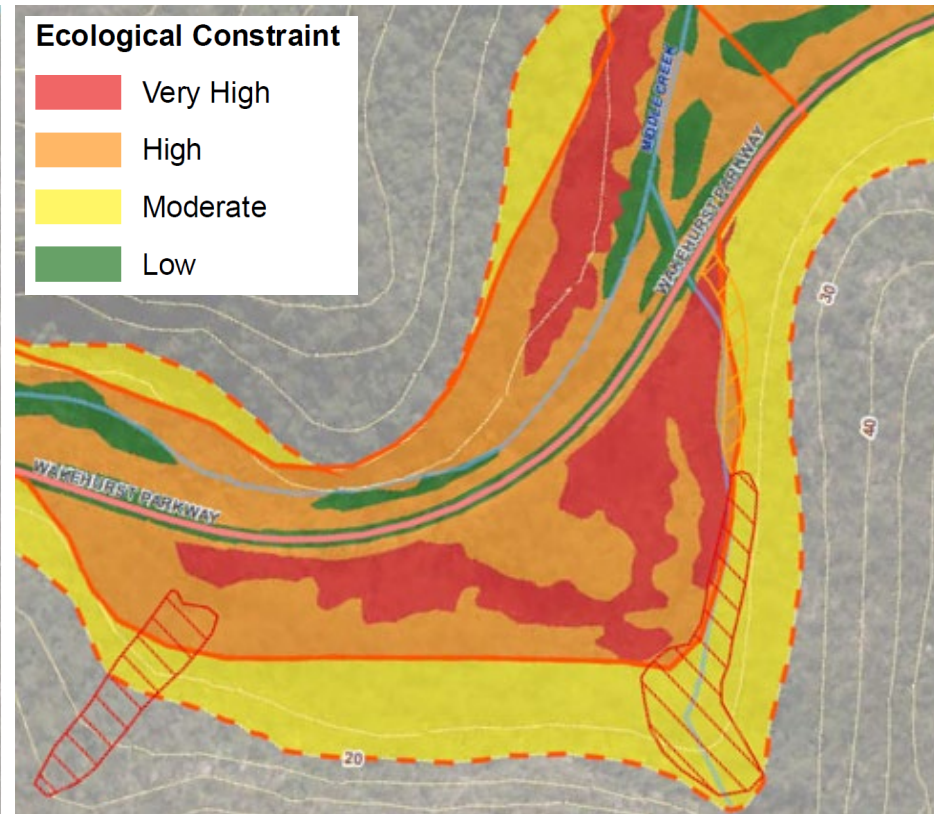
Environmental Impacts and Opportunities

Environmental Impacts and Opportunities

Flood Depth Map



Ecological Constraint Map



Environmental Impacts and Opportunities

- Oxford Falls Valley highly valuable environmental area
- Much of the high value ecological land is in the floodplain
- Road acts as a 'levee' which retains water in a large wetland on the eastern side of the bends
- Likely impacts:
 - Removal of over 3ha of bushland/wetlands including Threatened Ecological Communities and Threatened species
 - Environmental impact assessment required
 - Expensive offsetting
- Opportunity for restoration



Next steps

While a lot of work has been completed, there are a number of steps to come:

- feedback collected during this consultation period will be collated, assessed and reported back to Council
- if the elected Council decides to proceed, further designs and environmental approvals are required
- future stages of any flood reduction project would include, but not be limited to:
 - community consultation
 - design and approvals
 - procurement
 - construction and ensuring the rehabilitation of the impacted area.
- Thorough community and stakeholder engagement would be completed across all future project stages.

Have your say

No commitment has been made at this stage to pursue any specific option or combination of options and we want to hear from our community prior to making a decision.



<https://yoursay.northernbeaches.nsw.gov.au/wakehurst-parkway-flood-mitigation>



council@northernbeaches.nsw.gov.au



'Wakehurst Parkway Flood Mitigation',
Northern Beaches Council, PO Box 82 Manly,
NSW 1655.

Questions



use the chat box

or



use the “raise your hand” function if you would like to be asked to speak

or



unmute your microphone with camera on and ask a question



Update on Strategic Actions for Mountain Biking in Narrabeen Lagoon State Park catchment



northern
beaches
council

**Presentation to the Narrabeen
Lagoon State Park Advisory
Committee – 8 July 2021**



Background

- Deep Creek & Ingleside Chase Reserve - are the two major hotspots for unauthorised mountain bike riding on Council managed land within the Narrabeen Lagoon State Park catchment.
 - Other hotspots include Garigal National Park, Oxford Falls and Red Hill (owned/managed by NSW National Parks Wildlife Service (NPWS), Metropolitan Local Aboriginal Land Council, other State Government agencies and private property)
- There are at least 82 unauthorised bike trails covering approximately 70km in the State Park catchment (Based on information from online forum Trailforks).

Northern Beaches Trail Audit

OVERVIEW MAP: DEEP CREEK

30.03.21



- Trail Audit
 - Benry
 - Blackalicious
 - Franches
 - French Connection
 - Happy Ending
 - King Brown Alley
 - Loamville
 - Push-Up Track
 - Rust Bucket
 - Sprocket
 - The Dark Side
 - Trout
 - Two Bridges
 - Vovce
 - Ya Mun

- Base Layers
 - Closed Trail
 - Existing Tracks
 - Existing Roads
 - Lot
 - Hydroline
 - Contour2m
 - Study Area
 - Road/Corridor
 - NPWS Reserve
 - Crown Land

Extract from Deep Creek unauthorised trail audit

Background

- Bike trails are being constructed in various locations on the Northern Beaches without approval.
- Unauthorised trails can damage vegetation, cause erosion, damage natural land forms & impact cultural heritage.
- Other use / users are impacted.
- Compliance difficult to enforce due to; unknown builders, trails are often in remote locations & use & building is out of hours.
- Riders don't all know what trails are approved & what are not.

Background

How are unauthorised trails managed by Council?

- Signage
- Close unauthorised trails where resources permit
- Liaise with riders. Difficult as this community includes various groups & individuals that are not part of groups
- Seek ideas from other Councils & Land Managers

Outcomes - no observable reduction in unauthorised trail building or riding.

Since the COVID-19 restrictions were introduced in 2020 it has been observed that unauthorised trail building & riding has increased.

Background

Ideas to explore through the Open Space & Recreation Strategy Council is developing:

- Consider formalising specific trails & permanently closing other trails with rider buy in.
- Consider developing more places to ride.
- Continue to close unauthorised trails & seek more resources for this work.
- Work more closely with NPWS to formalise links & align management of closures.

Our Research

Consultation & research in 20/21 has revealed:

- A growing participation in off road cycling of all types on the Northern Beaches including mountain biking.
- That there are unmet facility needs of varying riding disciplines & skill levels, particularly in the Mona Vale & Brookvale-Dee Why catchments where there are currently no authorised trails / facilities.
- A desire from some rider groups to assist Council with maintenance.

In our view the growing participation & unmet facility needs contributes to the ongoing unauthorised trail building & riding.

Our Research

Trail Audits

Independent Trail Audits have been completed for the

- Manly Dam authorised mountain bike trail & unauthorised trails.
- Deep Creek, Forestville Park, JJ Melbourne Hills Memorial Reserve unauthorised trails

Local riding groups have been involved in the audit process

These audits provided recommendations for:

- Authorising some trails at Deep Creek – initial assessment of this audit indicates that environmental & planning assessment needs to be conducted with NPWS before any consideration of authorising trails.
- Authorising some trails at Forestville Park and JJ Melbourne Hills
- Closing some trails at these locations.
- Upgrades for the Manly Dam trail.
- Links with NPWS trails.

Next Steps for Mountain Bike Actions

- Staff (Environment & Climate Change, Parks & Recreation) to review the research findings & investigate the planning & approval pathways for trails & potential costs.
- The outcomes of this work will inform the draft off road cycling (mountain bike) action plan.
- The draft action plan (15 years) will be presented to a Council meeting later this year for approval to exhibit (as part of the draft Open Space & Recreation Strategy). The NLSPAC will be consulted at this time.

The following two slides outline some ideas under review. These ideas are subject to Council budget, planning & other approvals.

Preliminary Draft Off Road Cycling ideas - under review for the Open Space & Recreation Strategy (subject to budget, planning & other approvals)

Planning Catchment	Existing Authorised Facilities	Current Delivery Plan	Ideas under review (include)
Mona Vale	<ul style="list-style-type: none"> Nil 	<ul style="list-style-type: none"> Nil 	<ul style="list-style-type: none"> Deep Creek trails - Consider audit recommendations & conduct environmental & planning assessments & community engagement prior to determining next steps - Partner with NPWS. Ingleside Chase - Formalise agreed trail(s) & close/rehabilitate other trails following completion of any required environmental assessments. Consider new bike parks e.g. Bilarong Reserve & Avalon. New compliance signs.
Brookvale-Dee Why	<ul style="list-style-type: none"> Nil 	<ul style="list-style-type: none"> Nil 	<ul style="list-style-type: none"> Consider new bike parks in the catchment, e.g. John Fisher Park. New compliance signs.

PLANNING CATCHMENT SUBURBS

- Mona Vale Catchment:** including suburbs; Mona Vale, Bayview, Warriewood, Newport, Bilgola Beach,, Elanora Heights, Avalon Beach, Palm Beach, Clareville, Church Point, Ingleside, Whale Beach, Scotland Island, McCarrs Creek.
- Brookvale-Dee Why Catchment:** including suburbs: Brookvale, Freshwater, Dee Why, North Curl Curl, Beacon Hill, Narrabeena, Cromer, Wheeler Heights, Harbord, Narrabeen, Collaroy Plateau, Collaroy, Dee Why Beach, Curl Curl, North Manly, Queenscliff.
- Manly Catchment:** including suburbs; Manly, Fairlight, Balgowlah, Clontarf, Seaforth, Manly Vale, Allambie Heights.
- Frenchs Forest Catchment:** including suburbs; Frenchs Forest, Belrose, Forestville, Killarney Heights, Davidson, Oxford Falls.
- Terrey Hills Catchment:** including suburbs; Terrey Hills, Duffys Forest, Cottage Point.

Preliminary Draft Off Road Cycling ideas - under review for the Open Space & Recreation Strategy (subject to budget, planning & other approvals)			
Planning Catchment	Existing Authorised Facilities	Current Delivery Plan	Ideas under review (include)
Manly	<ul style="list-style-type: none"> Manly Dam mountain bike trail The Grove Bike Park, Seaforth 	<ul style="list-style-type: none"> Upgrade Manly Dam trail 21/22 Upgrade Grove Bike Park 	<ul style="list-style-type: none"> New bike park in Seaforth / Manly area. Consider new bike parks in the catchment. New compliance signs
Frenchs Forest	<ul style="list-style-type: none"> Bare Creek Bike Park Gahnia & Serrata trails (NPWS) Belrose fire trails (NPWS) 	<ul style="list-style-type: none"> New Junior Beginner Bike Park, Wyatt Ave, Belrose 	<ul style="list-style-type: none"> Forestville Park - Formalise agreed trails & close/revegetate other trails, following completion of any environmental assessments required. Consider new bike parks in the catchment e.g. Lionel Watts Reserve. New compliance signs
Terrey Hills	<ul style="list-style-type: none"> JJ Melbourne Hills - BMX track, pump track, dirt jump track, criterion track Terrey Hills fire trails (NPWS) 	<ul style="list-style-type: none"> Nil 	<ul style="list-style-type: none"> JJ Melbourne Hills - Formalise agreed trails & close/revegetate other trails, following completion of any environmental assessments. New compliance signs

Preliminary Draft Off Road Cycling ideas - under review for the Open Space & Recreation Strategy (subject to budget, planning & other approvals)

	<ul style="list-style-type: none">• Support volunteer maintenance.	<ul style="list-style-type: none">• Seek agreement with NPWS for agreed links at agreed locations & for a joined up approach to compliance	<ul style="list-style-type: none">• Seek additional resources for works (including from grants), assessments, compliance (including new signage), monitoring, maintenance, volunteering & community education (to promote caring for the environment).

Next Steps

- Finalise draft Open Space and Recreation Strategy and Action Plan
- Public Exhibition late 2021
 - Seek feedback from NLSPAC
- Adopt early 2022
- Implement Action Plan subject to budget, planning and other approvals