



northern  
beaches  
council

**Places for People**  
Strategic Reference Group

# AGENDA

## **PLACES FOR PEOPLE STRATEGIC REFERENCE GROUP**

Notice is hereby given that a meeting of the Places for People Strategic Reference Group will be held online via TEAMS on

**THURSDAY 5 NOVEMBER 2020**

Beginning at 6:00pm for the purpose of considering matters included in this agenda.

## Committee Members

Cr Ian White (Chair)	Councillor
Mayor Michael Regan	Councillor
Cr Candy Bingham	Councillor
Cr Stuart Sprott	Councillor
Caroline Ghatt	Play for all Australia
Stephen Pearce	Community Representative – Pittwater Ward
Jim Koopman	Community Representative – Pittwater Ward
Sita Mason	Youth Representative
Mark Lowe	Community Representative – Pittwater Ward
Merinda Rose	Community Representative – Pittwater Ward
Les Irwig	Community Representative – Frenchs Forest Ward
Miranda Korzy	Community Representative – Pittwater Ward
Maryann Novakovic	Community Representative – Manly Ward
Suzanne Cairns	Manly Dogs
Richard Michell	Manly, Warringah and Pittwater Historical Society
Kelvin Milsom	Northern Beaches Junior AFL Association, Manly Warringah Pittwater Sporting Union

## Council Officer Contacts

Andrew Pigott	Executive Manager Strategic & Place Planning
Steven Lawler	Executive Manager Parks & Recreation
Ximena Von Oven	Governance Officer

## Quorum

A majority of members including the Chair or one of the elected Councillors.

**Agenda for Places for People  
Strategic Reference Group Meeting  
to be held online via TEAMS on Thursday 5 November 2020  
Commencing at 6:00pm**

<b>1.0</b>	<b>ACKNOWLEDGEMENT OF COUNTRY .....</b>	<b>4</b>
<b>2.0</b>	<b>APOLOGIES .....</b>	<b>4</b>
<b>3.0</b>	<b>DISCLOSURES OF INTEREST .....</b>	<b>4</b>
<b>4.0</b>	<b>CONFIRMATION OF MINUTES OF PREVIOUS MEETING</b>	
4.1	Minutes of Places for People Strategic Reference Group meeting held 6 August 2020 .....	4
<b>5.0</b>	<b>UPDATE ON ACTIONS FROM LAST MEETING</b>	
	Nil	
<b>6.0</b>	<b>AGENDA ITEMS .....</b>	<b>5</b>
6.1	Social Sustainability Strategy (40 mins) .....	5
6.2	Parks and Recreation - Key Project Updates (20 mins) .....	23
6.3	Environmental Zones Review - Focus Group Presentation (40 mins) .....	24
<b>7.0</b>	<b>GENERAL BUSINESS</b>	

**NEXT MEETING TBA**

## 1.0 ACKNOWLEDGEMENT OF COUNTRY

---

As a sign of respect, Northern Beaches Council acknowledges the traditional custodians of these lands on which we gather and pays respect to Elders past and present.

---

## 2.0 APOLOGIES

---

All members are expected to attend the meetings or otherwise tender their apologies to the Chair and Governance at [councilmeetings@northernbeaches.nsw.gov.au](mailto:councilmeetings@northernbeaches.nsw.gov.au).

---

## 3.0 DISCLOSURES OF INTEREST

---

Members should disclose any "**pecuniary**" or "**non-pecuniary**" interests in matters included in the agenda. The [Northern Beaches Council Code of Conduct](#) (the Code) provides guidance on managing conflicts of interests.

A **pecuniary interest** is defined in Section 4 of the Code as:

*A pecuniary interest is an interest that you have in a matter because of a reasonable likelihood or expectation of appreciable financial gain or loss to you or a person referred to in clause 4.3.*

A **non-pecuniary conflict of interest** is defined in Section 5 of the Code as:

*A non-pecuniary conflict of interest exists where a reasonable and informed person would perceive that you could be influenced by a private interest when carrying out your official functions in relation to a matter.*

If you required further information or guidance about disclosing an interest please contact Governance at [councilmeetings@northernbeaches.nsw.gov.au](mailto:councilmeetings@northernbeaches.nsw.gov.au).

---

## 4.0 CONFIRMATION OF MINUTES OF PREVIOUS MEETING

### 4.1 MINUTES OF PLACES FOR PEOPLE STRATEGIC REFERENCE GROUP MEETING HELD 6 AUGUST 2020

---

#### RECOMMENDATION

That the Minutes of the Places for People Strategic Reference Group meeting held 6 August 2020, copies of which were previously circulated to all Members, be confirmed as a true and correct record of the proceedings of that meeting.

---

## 6.0 AGENDA ITEMS

ITEM 6.1	SOCIAL SUSTAINABILITY STRATEGY
REPORTING OFFICER	SOCIAL PLANNING & STRATEGY COORDINATOR
TRIM FILE REF	2020/617647
ATTACHMENTS	1 <a href="#">↓</a> Social Sustainability Strategy Presentation

---

### EXECUTIVE SUMMARY

---

#### PURPOSE

To provide an update on the status and approach to develop a Social Sustainability Strategy and gather input from the Places for People Strategic Reference Group.

#### SUMMARY

Council is in the process of developing Better Together, Social Sustainability Strategy 2041. This strategy will set a long-term social direction for building skills and knowledge in the community that enable wellbeing and resilience.

Stakeholder engagement is critical to the development of the strategy and the Strategic Reference Groups are a priority group identified for consultation and input. This report and the presentation in the meeting will provide a foundation understanding of the project.

The workshop at the meeting will explore some key themes, challenges and opportunities that will inform the development of the strategy.

---

### RECOMMENDATION OF SOCIAL PLANNING & STRATEGY COORDINATOR

That the Places for People Strategic Reference Group:

1. Note the Social Sustainability Strategy presentation
  2. Provide feedback on:
    - A. Draft strategic framework
    - B. Strengths, challenges and opportunity mapping
  3. Note the next Strategic Reference Group Engagement activity proposed for February 2021
-

---

## REPORT

---

### BACKGROUND

A project is underway to develop a Social Sustainability Strategy (the Strategy) for Northern Beaches over a 20 year horizon, *Better Together, Social Sustainability Strategy 2041*.

The Strategy will be a key mechanism for Northern Beaches Council to achieve its commitment to the community in delivering the Shape 2028 community vision “**A safe, inclusive and connected community that lives in balance with our extraordinary coastal and bushland environment.**”

The Strategy will identify opportunities to enhance and support every member of the community to experience a safe, inclusive and connected community.

The proposed approach to developing the Strategy will provide Council and the community with:

- A **long-term social direction** that builds upon existing services, social resources and skills in the community
- A framework for **building the skills and knowledge of the community** to respond to social challenges through strong partnerships
- **Strengthen and the ability of the community to recover** from unexpected social, political, environmental and financial impacts.

The positioning of this Strategy has been mapped within the broader suite of Council strategies and plans. This is important to ensure that the interaction with other key documents such as Shape 2028, Towards 2040, Protect Create Live 2040, and Move 2030 is complimentary in scope and strategic direction.

Developing the strategy with the community is crucial to ensure that what is developed represents a shared resource that capture the breadth of strengths, challenges and opportunities for all people living and working on the Northern Beaches.

This approach includes a detailed stakeholder engagement plan that seeks to maximise opportunities to incorporate collaboration and build partnerships with key stakeholders inside and outside of Council. This collaboration and partnerships is a critical delivery objective of the Strategy and is integral to its long-term success.

### Work to Date

Engagement has occurred with internal stakeholders through two internal Working Groups, one across Council and one from the Community, Arts and Culture Business Unit.

Feedback and input was gathered from a workshop with the Community and Belonging Strategic Reference Group in August.

This preliminary work has produced:

- Draft visions for each of the three pillars (Safe, Inclusive and Connected) and a draft strategic framework
- Detailed stakeholder identification
- Strengths and opportunities mapping focusing on wellbeing, resilience and capacity building
- Commencement of a draft issues/discussion paper documenting current state, population forecasts and key challenges facing the Northern Beaches in terms of Social Sustainability

- Identification of priority populations.

### **Stakeholder Engagement**

In developing a Stakeholder Engagement approach, the following key objectives were identified:

- Deliver an educative piece for internal and external sector stakeholders around the benefits of the Social Sustainability Strategy and how it is relevant to them; including other Council strategies (internal) and helping build community capacity by supporting the sector (external)
- Develop a community endorsed vision of the three key pillars - safety, inclusion and connectedness and capture the areas of strength relating to wellbeing, resilience and capacity building in the community which will inform action plans flowing from the Social Sustainability Strategy
- Gather targeted feedback on key community issues and the experience of priority groups
- Leverage the rapport built in genuine engagement to achieve buy-in from key stakeholders for the ongoing delivery and collaboration with Council to address each priority area over the life of the strategy.

To achieve these objectives a four-phased approach to engagement is proposed.

### **Consultation with Strategic Reference Groups**

To create meaningful opportunities to contribute to the direction and content of the Strategy, we will engage with the Strategic Reference Group's in Phases 1 to 3.

Phase 1 - The Community and Belonging SRG was consulted at the August 2020

Phase 2 - All Strategic Reference Groups will be engaged individually at the November meetings.

Phase 3 - A dedicated workshop in February 2021, inviting participation from all members of all Strategic Reference Groups.

### **TIMING**

The timeframe for delivery of a Social Sustainability Strategy is June 2021.

### **Covid19 Pandemic Response**

Consideration has been given to the impact of Covid19 on both the ability to meaningfully engage, and the context of any medium to long-term impacts of the pandemic on the community.

Given we are still in the midst of the pandemic response, it makes it difficult to fully comprehend or forecast what the primary and lasting impact of the pandemic will be on the community. To date the data and analysis coming from the research sector about the evolving impact on the community indicate it is primarily exacerbating existing social issues. Examples include an increase in domestic violence, household financial stress and an increase in mental health concerns.

Within the context of the Social Sustainability Strategy, this indicates that we can move forward with a long-term outlook and be confident that these issues will be captured within the proposed engagement process. More consideration will be made as the project progresses around the prioritisation of issues, as this is likely to be where we see changes in community need rather than the creation of new areas of focus. For example, the reduction and loss of income and employment experienced disproportionately by women and younger workers may affect the prioritisation of this priority group higher now than pre covid19.

**Workshop**

The workshop will explore the evidence collected internally for discussion with the community.

Consider the presentation on the following elements:

- Draft Strategic framework – themes
- Strengths
- Challenges
- Opportunities

Items for discussion:

- Discuss the benefits and challenges associated with building Social Sustainability within the context of the broader Strategic and Place planning challenges and opportunities.
- Build on opportunities for synergy between place planning and social planning.



# Better Together

Social Sustainability Strategy 2041



# Why have a Social Sustainability Strategy?

The aims of the 20-year strategy are:



a **long term social direction** that builds upon existing services, social resources and skills in the community



a framework for **building the skills and knowledge of the community** to respond to social challenges through strong partnerships



**Strengthen the ability of the community to recover** from unexpected social, political, environmental and financial impacts.

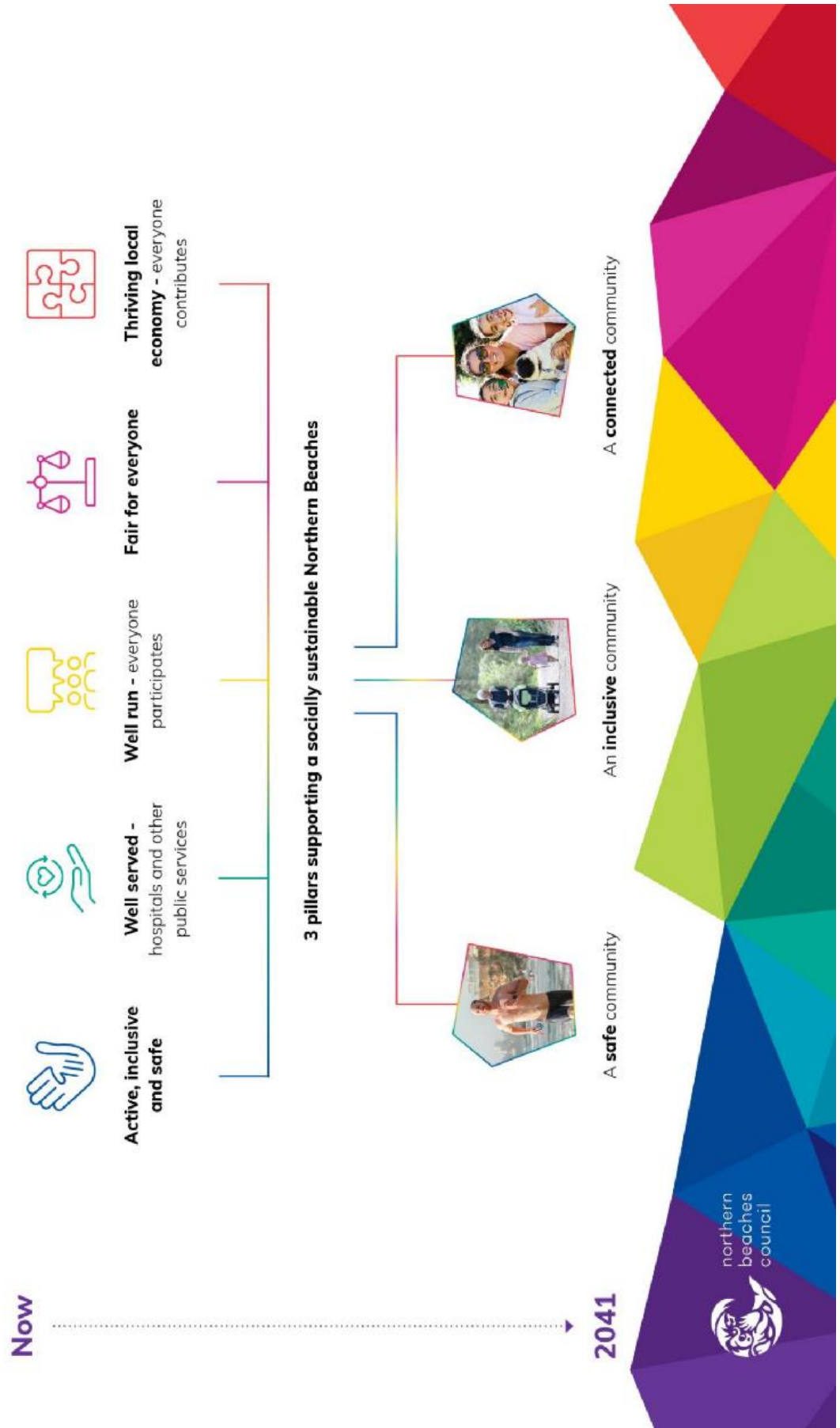
# Where are we headed?

Collaborating with our community ensures we develop a shared resource that represents the strengths, challenges and opportunities for all on the Northern Beaches



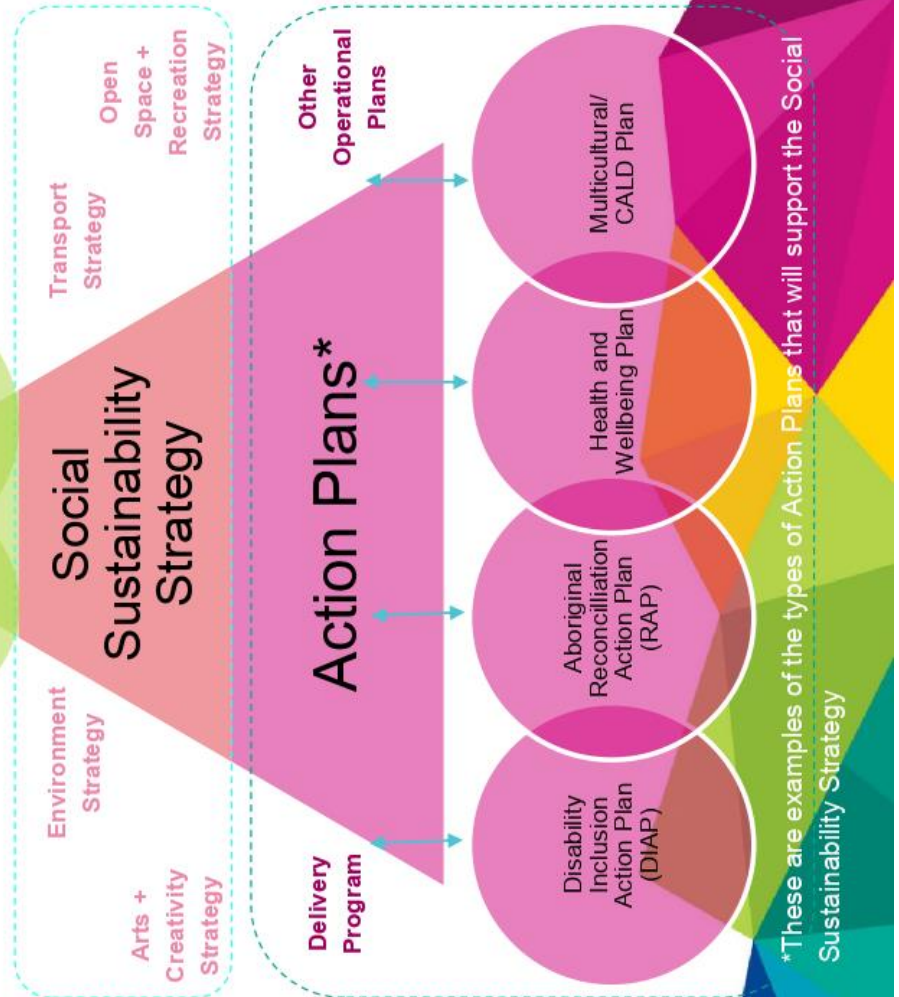


# What does Social Sustainability mean for the Northern Beaches?

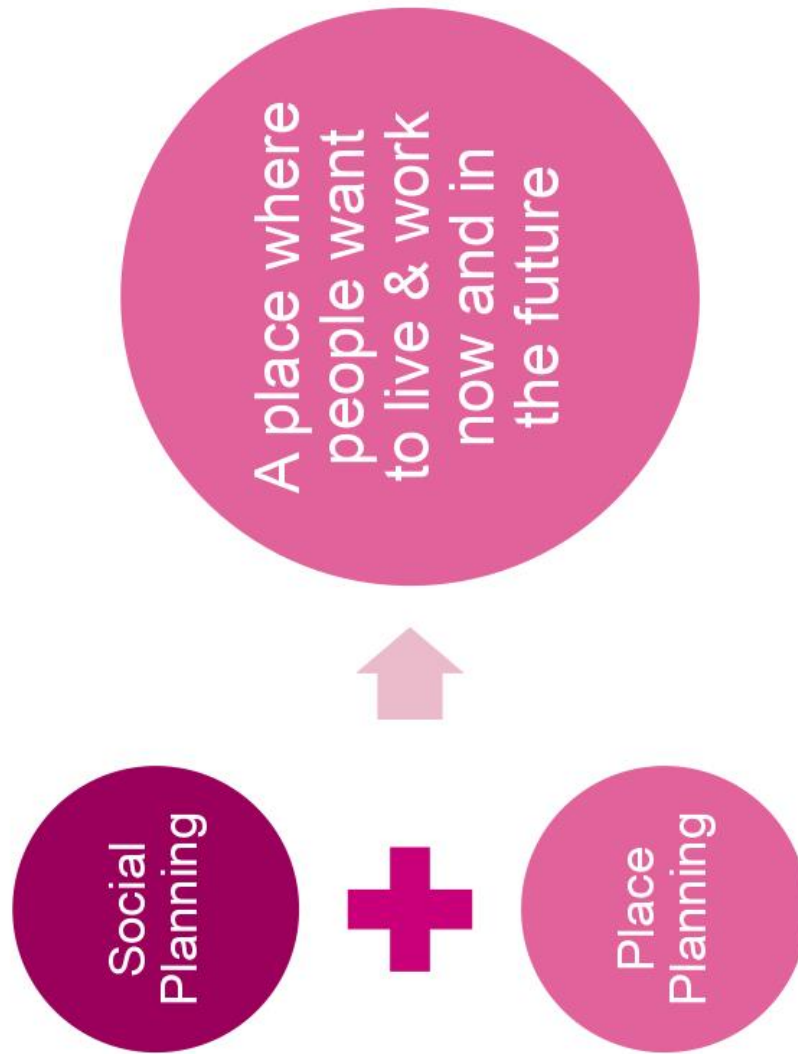


# Planning Framework

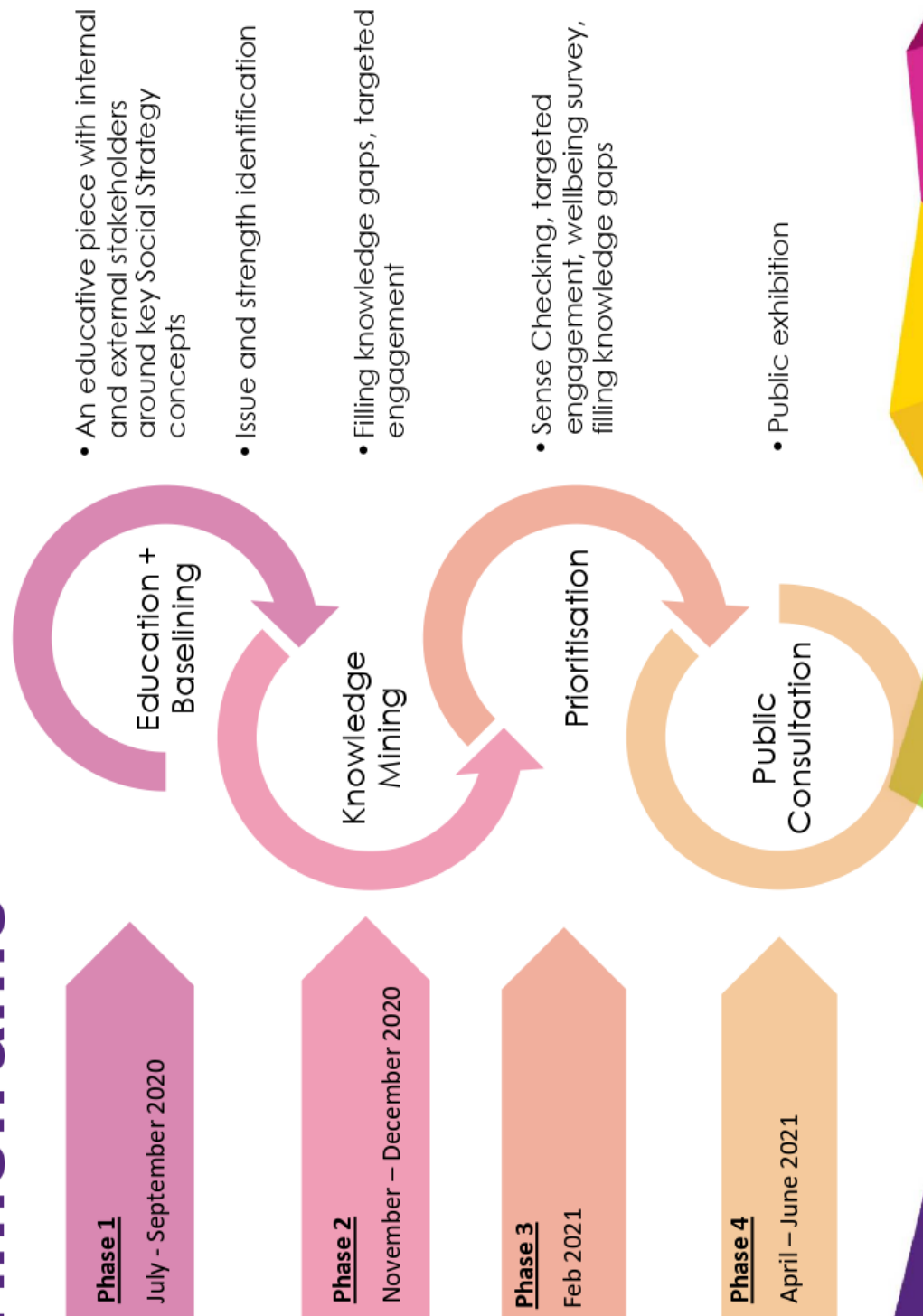
The Social Sustainability Strategy will align with the  
Community Strategic Plan vision.



# Common Goals

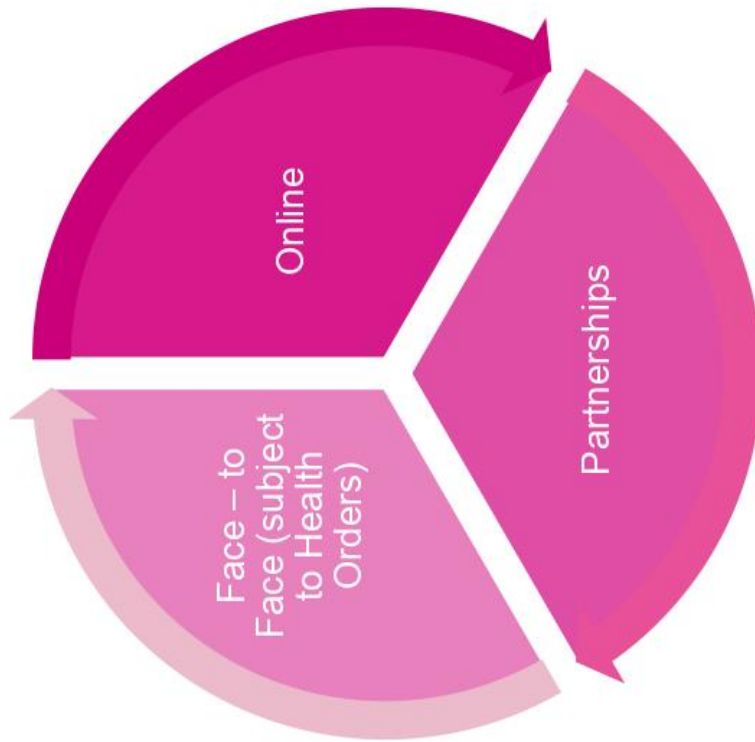


# Timeframe





# Proposed approach to Phase 2 Engagement



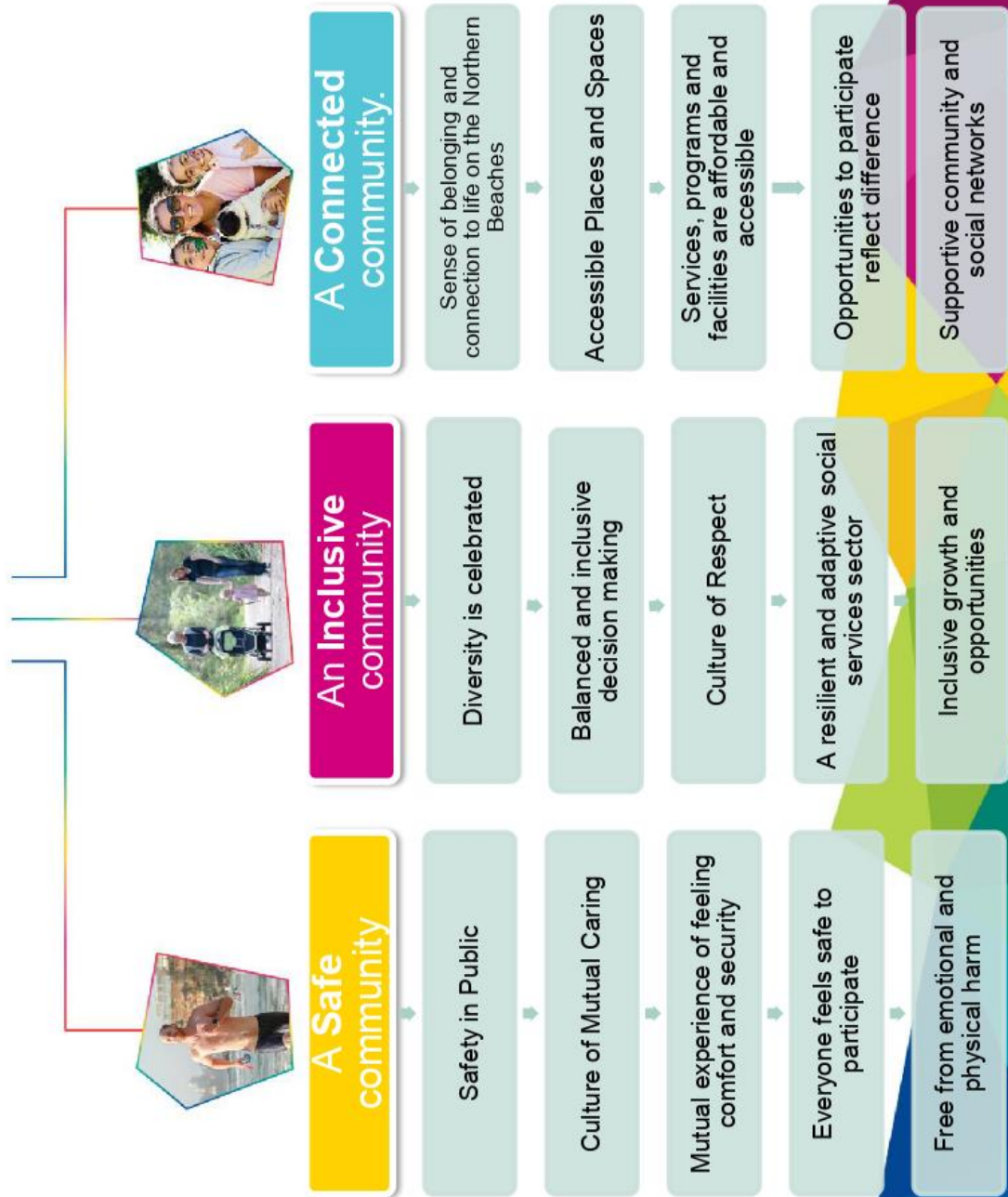


# Workshop

## Exploring Social Sustainability Strategy and Place Planning

# Draft Strategic Framework

3 pillars supporting a socially sustainable Northern Beaches



# Our communities strengths

Thriving social and  
sporting  
opportunities

Safe ways to  
participate

High rates of  
volunteering

Self- sufficient  
economy with the  
majority of  
people employed  
locally

High levels of  
Community  
Safety



Strong Not-for-  
Profit presence

Socio-  
economically  
advantaged

# Key issues intersecting Place Planning + Social Sustainability

Affordable &  
Sustainable  
Housing

Pockets of  
LGA with  
less access  
to Services

Ageing  
Population

Decrease in  
Young Adults





How can they  
work together?

# Key opportunities for Place Planning and Social Planning



# Questions and next steps

## Super SRG Extraordinary Meeting– February 2021



<b>ITEM 6.2</b>	<b>PARKS AND RECREATION - KEY PROJECT UPDATES</b>
<b>REPORTING OFFICER</b>	<b>MANAGER, OPEN SPACE &amp; RECREATION PLANNING</b>
<b>TRIM FILE REF</b>	<b>2020/637184</b>
<b>ATTACHMENTS</b>	<b>NIL</b>

---

## EXECUTIVE SUMMARY

---

### PURPOSE

To provide an update on key recreation planning projects currently being undertaken by the Parks and Recreation Business Unit.

### SUMMARY

#### Crown Land Reform - Land Categories

Community engagement on proposed land categories for 35 Crown reserves was undertaken from 24 August to 11 October 2020. A report on the outcomes of this engagement is planned to be presented to Council in December 2020. This work is part of an obligation under the Crown Land Management Act 2016 which legislates that Council is required to manage Crown land in the same manner as Community land, in accordance with the Local Government Act 1993.

#### Open Space and Recreation Strategy

The preparation of the draft strategy is continuing and a draft is planned to be completed by December 2020. In recent months the team have been working with riders to understand the need for off-road cycling facilities for different disciplines, age groups and skill levels and the needs in different areas. To assist us in understanding where people are riding a trail consultant has been engaged to audit unauthorised trails in North Narrabeen, Forestville and Terrey Hills and to review the state of the mountain bike trail at Manly Dam. This work will inform an Off-Road Cycling Action Plan for the Strategy - this plan will guide Council in the development and management of outdoor cycling facilities.

#### Plans of Management

There are over 140 Plans of Management that provide strategic planning and governance for the management and use of Council land. As needed these Plans of Management are reviewed and updated. In 2020/21 the Governor Phillip Park (Palm Beach) Plan of Management will be updated and a new Plan of Management is being developed for Ivanhoe Park and Manly Oval (Manly).

---

## RECOMMENDATION OF MANAGER, OPEN SPACE & RECREATION PLANNING

That the Places for People Strategic Reference Group note the Parks and Recreation Business Unit's project updates.

---

<b>ITEM 6.3</b>	<b>ENVIRONMENTAL ZONES REVIEW - FOCUS GROUP PRESENTATION</b>
<b>REPORTING OFFICER</b>	<b>PRINCIPAL PLANNER</b>
<b>TRIM FILE REF</b>	<b>2020/659590</b>
<b>ATTACHMENTS</b>	<b>1 <a href="#">↓</a> Environmental Zones Review - Focus Group Presentation for SRGs</b>

---

## REPORT

---

### PURPOSE

To update the Places for People Strategic Reference Group on the Environmental Zones Review focus groups held in late September 2020 as part of the preparation of the new Northern Beaches Local Environmental Plan.

### REPORT

Meridian Urban planning consultants have been engaged to undertake a review of the Environmental Zones in Council's Local Environmental Plans (LEPs). This work will inform the preparation of the new Northern Beaches LEP. As part of the first stage of this review, a series of focus groups were held with community members in early September.

The purpose of the focus groups was to engage with a broad group of landowners and community members across the local government area to obtain an understanding of the values, issues and concerns that could influence the design and application of Environmental Zones across the Northern Beaches.

Council sought expressions of interest by letter to approximately 12,000 property owners, and emails to over 20,000 subscribers to attend a focus group. Council received 325 nominations to participate. As only 70 places were available, participants were randomly selected based on an analysis of their availability and to ensure representation from across the local government area. Council was also able to select representatives from all local resident associations or community groups that applied. All community members who missed out were provided with the workshop material and survey to ensure that they can contribute at this early stage in the Environmental Zones Review.

Meridian Urban provided the presentation to the focus groups to guide and facilitate discussion amongst the participants (an abridged version is available at Attachment 1). The agenda for the focus groups included: background information; Environmental Zone Review overview; place-based considerations; and next steps. The presentation was accompanied by a survey containing 12 questions.

The survey results and focus group discussion will be considered in the final Environmental Zone Review report, together with a number of technical studies as outlined on Council's [website](https://yoursay.northernbeaches.nsw.gov.au/planning-our-sustainable-future) (<https://yoursay.northernbeaches.nsw.gov.au/planning-our-sustainable-future>).

Council is seeking to update the Places for People SRG on the process undertaken to date and the next steps in preparing the overall zoning framework. This framework will need to consider objectives and permitted land uses for the following zones: Rural; Residential; Business; Industrial; Infrastructure; Recreation and Waterways.

It should be noted that Council is in the very early stages of the Environmental Zones Review and there will be further opportunities for the community to have their say. This includes the exhibition of a LEP discussion paper scheduled for early 2021.

The following links are provided as background information:



- Department of Planning, Industry and Environment - [Practice Note on Environmental Zones](#)
  - Planning – Video - PIA – [What is Planning](#)
  - Northern Beaches Council's
    - Local Strategic Planning Statement – Towards 2040 ([webpage](#) or [video](#)), in particular note the section 'Sustainability'
    - Environmental Zones Review – [webpage](#)
    - Local Environmental Plan (LEP) – search property online, go to "Planning" and see 'Zoning and Overlays' to see which LEP and zone affects a particular property. All LEPs and DCPs are listed on the left of this page.
  - Greater Sydney Commission's North District Plan ([webpage](#) or [video](#))
  - Standard Instrument — Principal Local Environmental Plan ([Land Use Tables](#) and [Dictionary](#) describing land uses)
- 

#### RECOMMENDATION OF PRINCIPAL PLANNER

That the Places for People Strategic Reference Group note the presentation on the Environmental Zones Review focus groups.

---



**Planning  
Our Sustainable  
Future**

Creating one new  
planning framework

**Environmental Zones  
Review**

**Focus group sessions**  
7 October 2020

## Program Overview

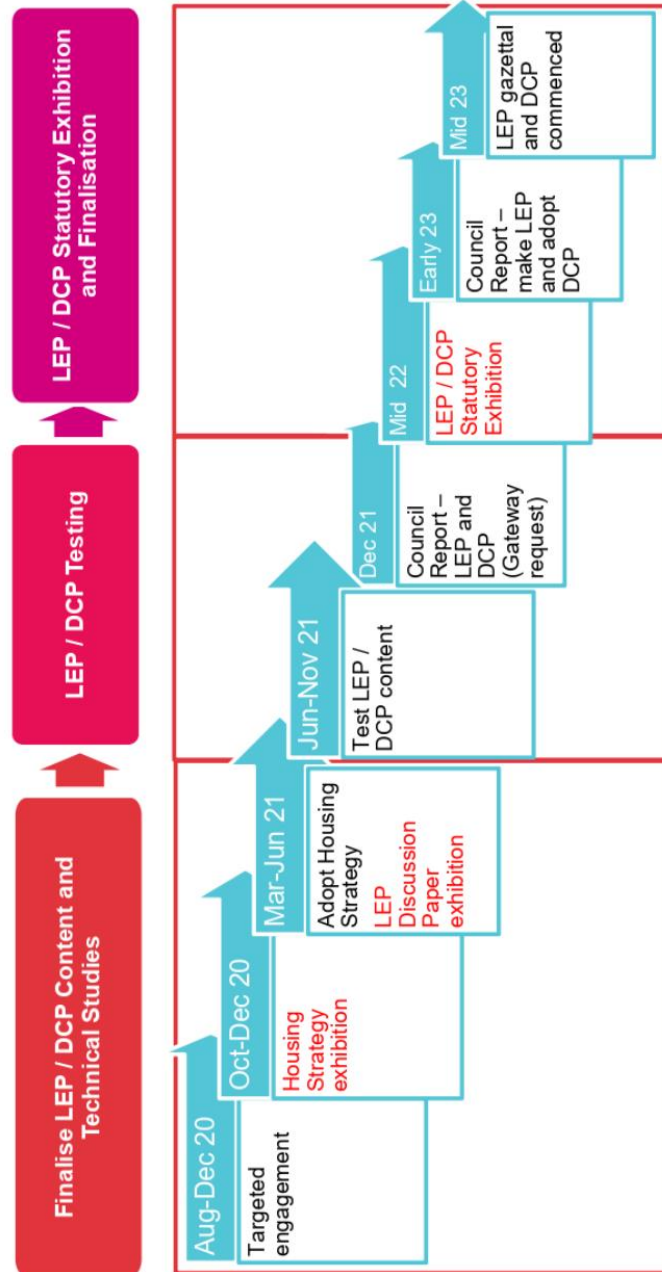


## LEP / DCP Technical Studies

Sustainability	Deferred lands	Liveability	Productivity & Infrastructure
<input type="checkbox"/>	<input type="checkbox"/>	<input type="checkbox"/>	<input type="checkbox"/>
<input type="checkbox"/> Environment study	<input type="checkbox"/> Strategic Bush Fire Risk Assessment	<input type="checkbox"/> Local Housing Strategy	<input type="checkbox"/> Employment Study
<input type="checkbox"/> Environmental Zones	<input type="checkbox"/> Biodiversity Study	<input type="checkbox"/> Local character study	<input type="checkbox"/> Social Infrastructure Study
<input type="checkbox"/> Biodiversity Planning Analysis		<input type="checkbox"/> Urban Design (DCP)	<input type="checkbox"/> Land Use and Infrastructure Implementation Plan
<input type="checkbox"/> Riparian Lands Study			
<input type="checkbox"/> Stormwater quality strategy			
<input type="checkbox"/> Geotechnical study			



## Program timeline

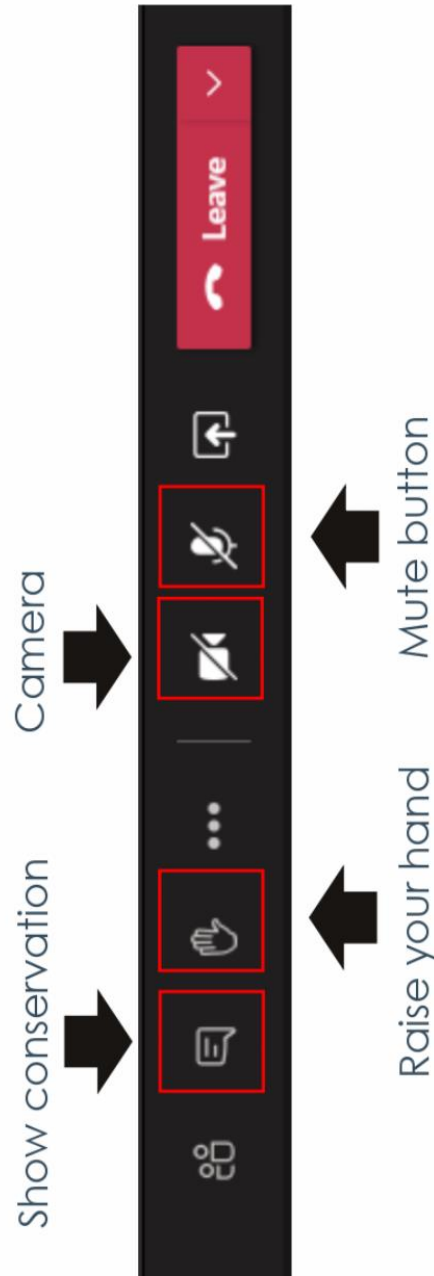




# Workshop agenda



# Introduction to teams



# Workshop conventions

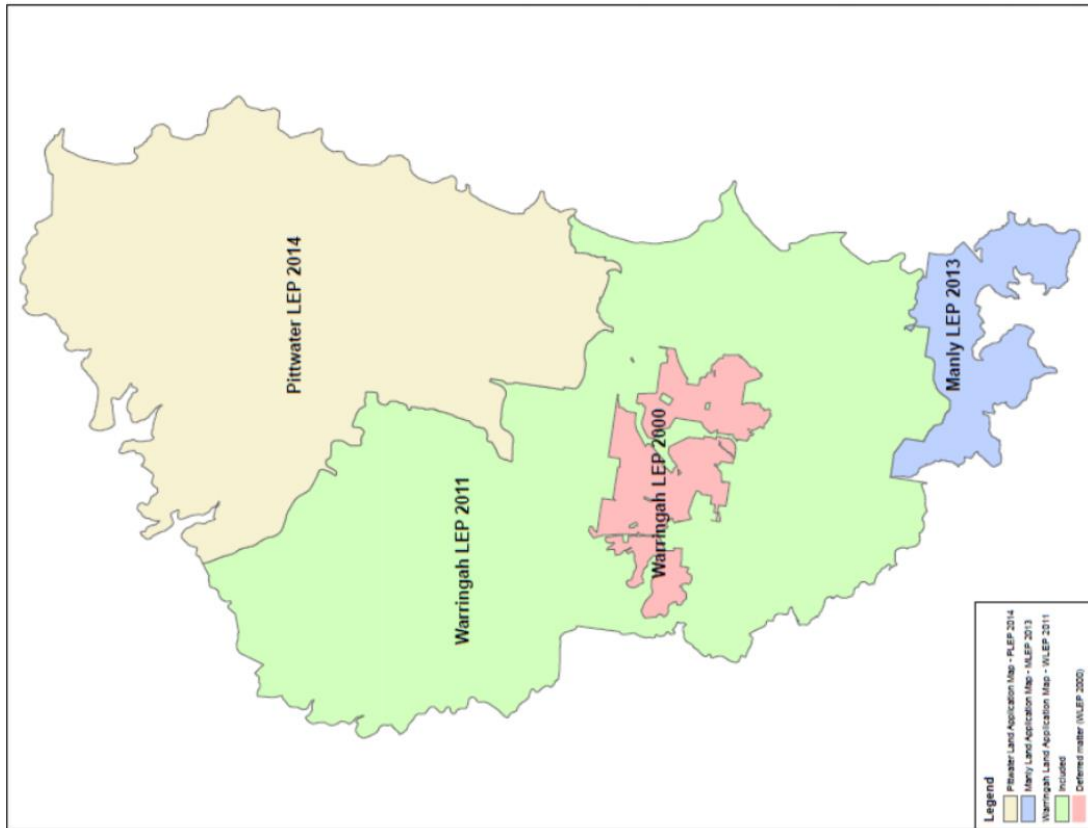
## Intent of the workshop:

- Update of what we are doing and where we are at
- Look at the entire Northern Beaches and not focus at the site level
- Collaborate and listen to the different views
- Feedback today will help inform the review, together with other information

## Workshop etiquette:

- The chair will open up the meeting for questions at key parts during the workshop
- Keep your microphone muted – and unmute when you wish to speak
- One person speaks at a time
- Listen and be respectful of each others different views
- There are no right or wrong answers
- Speak clearly and slowly so all information can be captured





# What is a local environmental plan (or LEP)?

Legal instrument that establishes land use zones and standards to control development

# What are zones?

A framework for the way land can be used

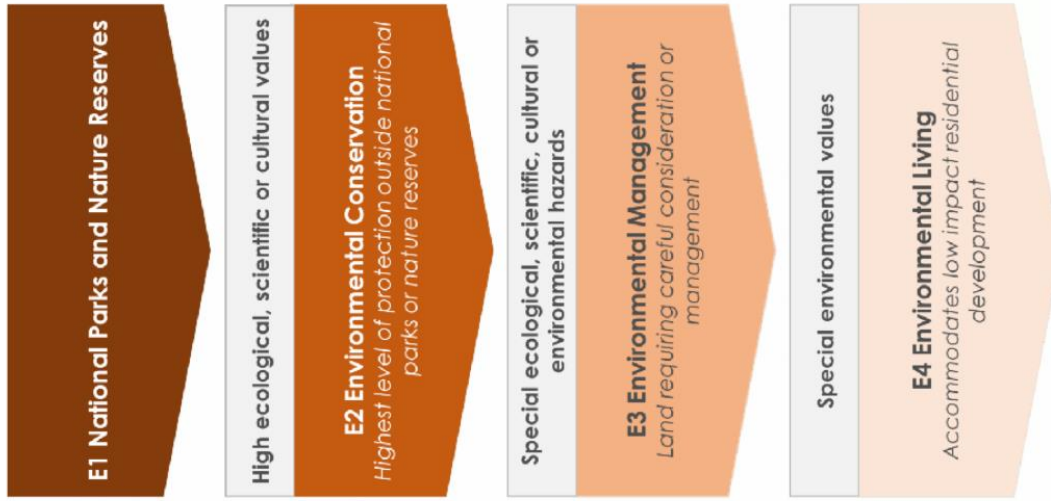
Set out what uses are allowed (or permitted) and what are prohibited

These land uses must relate to the objectives within these zones



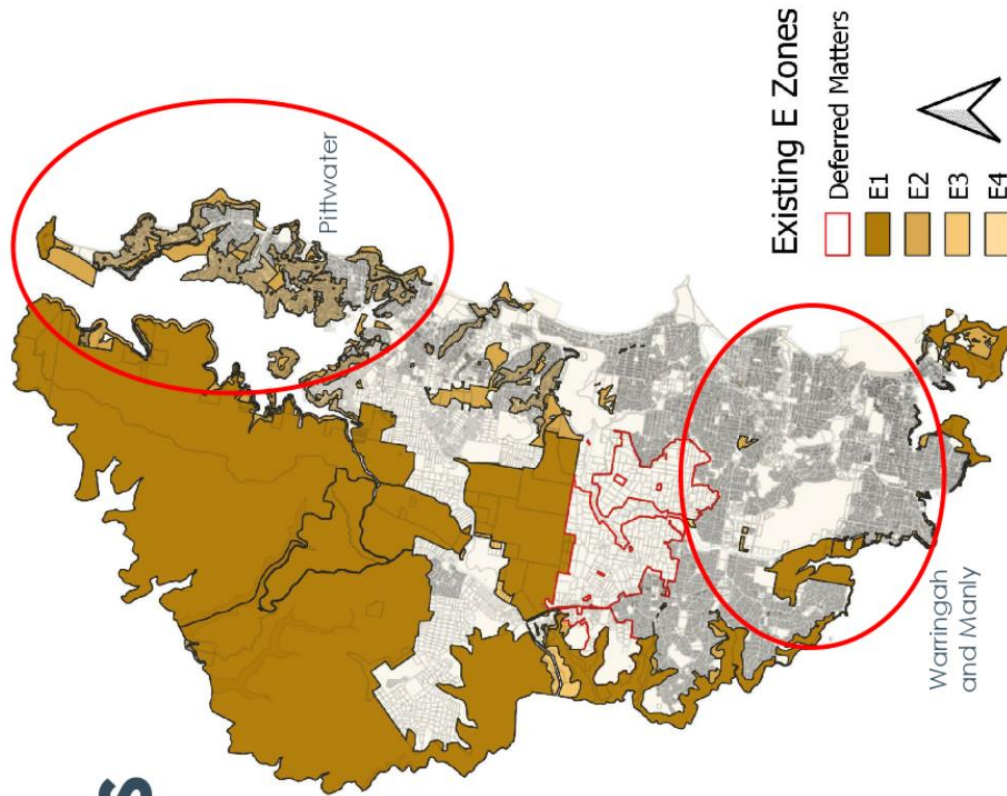
# What are Environmental zones (or E zones)?

Used to protect land that is of  
important environmental value



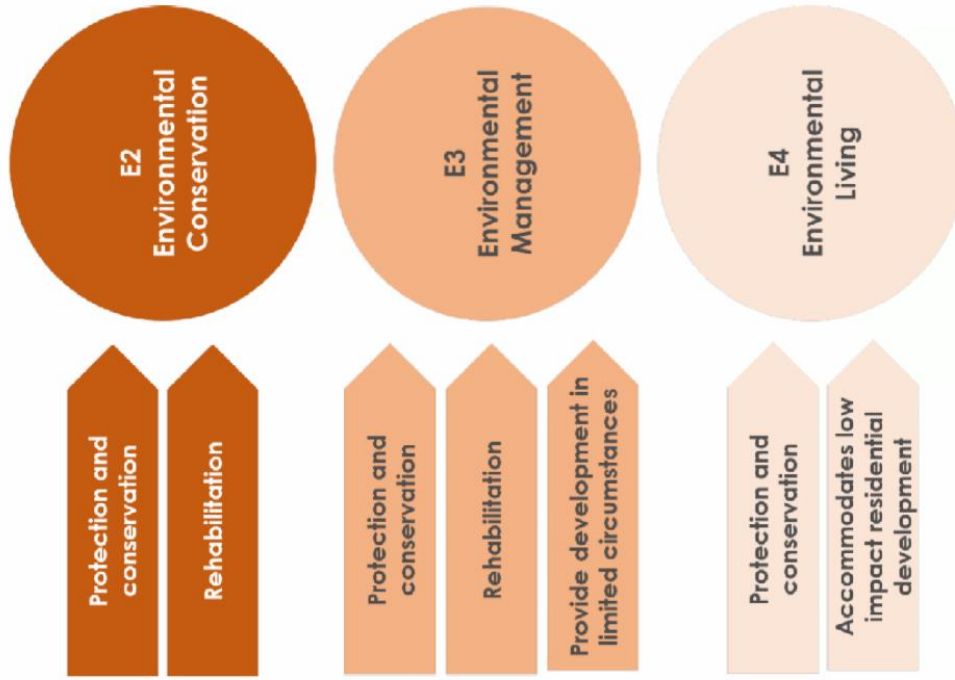
# Why are the E zones being reviewed?

Variation in how the existing  
E zones are applied across  
Pittwater, Warringah and  
Manly



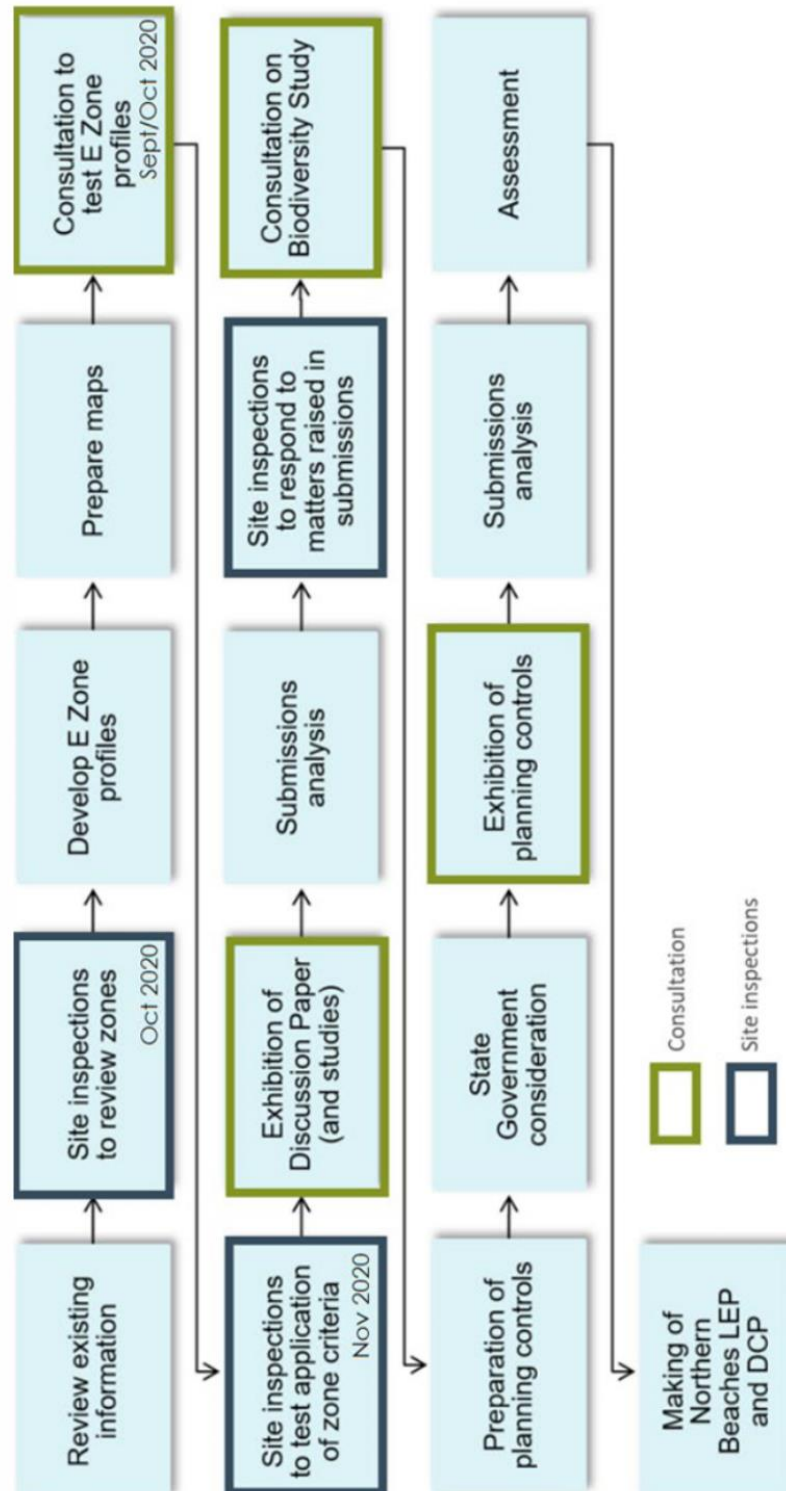
# What is the purpose of the E Zones Review?

Develop proposed criteria for the E zones and the rules for how each will apply





# What is the E Zones Review process?



# What will inform the E Zones Review?

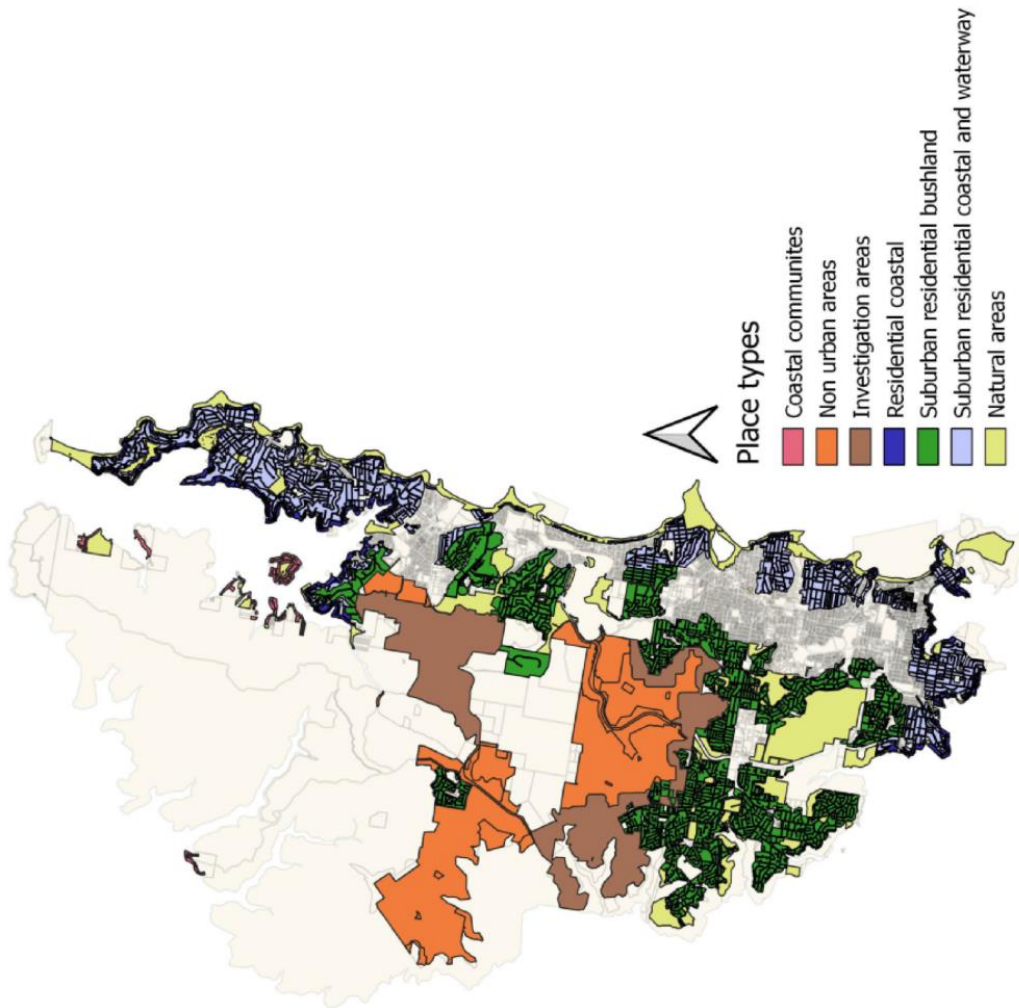
- Policy requirements
- Other E Zones Reviews
- Technical information
- Site inspections
- Community feedback

# Questions?





# Place- based approach



# Coastal communities

Low density residential development with 1 to 2 storey single lot dwellings on often steeply sloping sites interspersed with native vegetation

Warringah LEP 2011 –  
Cottage Point



Pittwater LEP 2014 –  
Pittwater



- Cottage Point
- Scotland Island
- Great Mackerel Beach
- Coasters Retreat
- Morning Bay
- Elvina Bay



# Uses permitted with consent

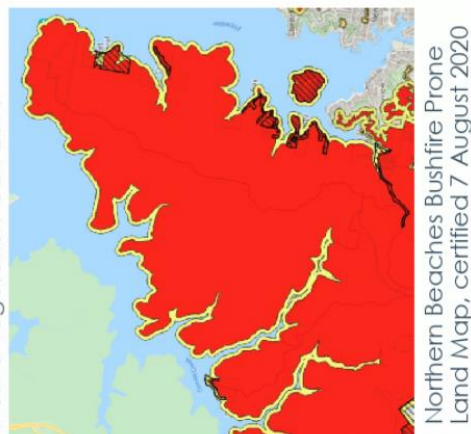
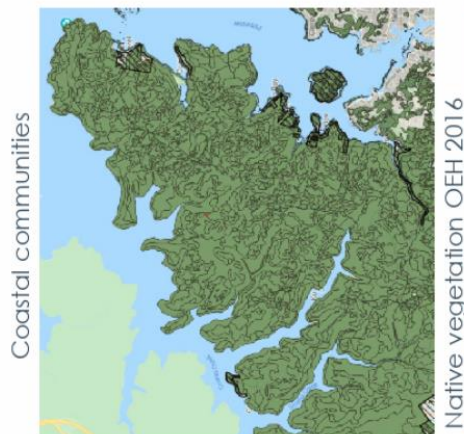
Land uses*	Pittwater LEP 2014 Scotland Island Great Mackerel Beach Coasters Retreat Morning Bay Elvina Bay	Warringah LEP 2011 Cottage Point
	E3 zone	E4 zone
Dwelling houses		
Bed and breakfast accommodation		
Boat sheds		
Health consulting rooms		
Aquaculture		
Home industries		
Recreation areas		

\*This is not an exhaustive list of permitted uses. Prohibited uses have not been listed.



# Key considerations – coastal communities

- Interspersed with areas of native vegetation and threatened species habitat given the surrounding Ku-ring-gai Chase National Park
- Further urban development is not consistent with the bushland setting
- Protection of human life and property from bush fire is a major planning concern
- Limited vehicular access or only accessible by foot or boat
- Identified as being at risk of landslip and coastal hazards





# Survey

<https://www.surveymonkey.com/r/QF78V65>



## About you

1. What is your interest in the Environmental Zones Review?
2. To help us better understand your perspective, what suburb is your property located in?

# Land uses by category

## Survey question

**One dwelling** e.g. dwelling houses

**Two dwellings** e.g. dual occupancies, secondary dwellings

**Low rise multi dwellings** e.g. seniors housing, town houses, boarding houses

**High rise multi dwellings** e.g. residential flat buildings

**Tourism** e.g. bed and breakfast accommodation, function centres

**Recreation** e.g. boat sheds, jetties, recreation facilities

**Care facilities** e.g. child care facilities, respite day care centres, hospitals

**Community facilities** e.g. schools, churches

**Home based businesses** e.g. home businesses, home industries

**Food and beverage premises** e.g. restaurants or cafes

**Commercial** e.g. commercial premises, health consulting rooms, neighbourhood shops, retail premises

**Rural** e.g. agriculture, animal boarding or training, farm buildings, plant nurseries, landscaping material supplies, rural supplies, rural workers' dwellings, veterinary hospitals

# Environmental values or criteria

## Survey question

- Bushland
- Threatened species e.g. penguins, long nosed bandicoot
- Riparian corridors along waterways
- Wildlife corridors
- Tree canopy
- High bush fire risk
- High coastal hazard risk e.g. erosion, wave impact
- Steep slopes
- Scenic landscapes of the coast and bushland
- Cultural significance e.g. Aboriginal cultural heritage

# Coastal communities survey questions

- Cottage Point
- Scotland Island
- Great Mackerel Beach
- Coasters Retreat
- Morning Bay
- Elvina Bay

3. What uses do you think are suitable in coastal communities?

4. For coastal communities, what criteria influenced your thinking the most in the last question?



# Coastal corridor

Residential land adjoining the coast



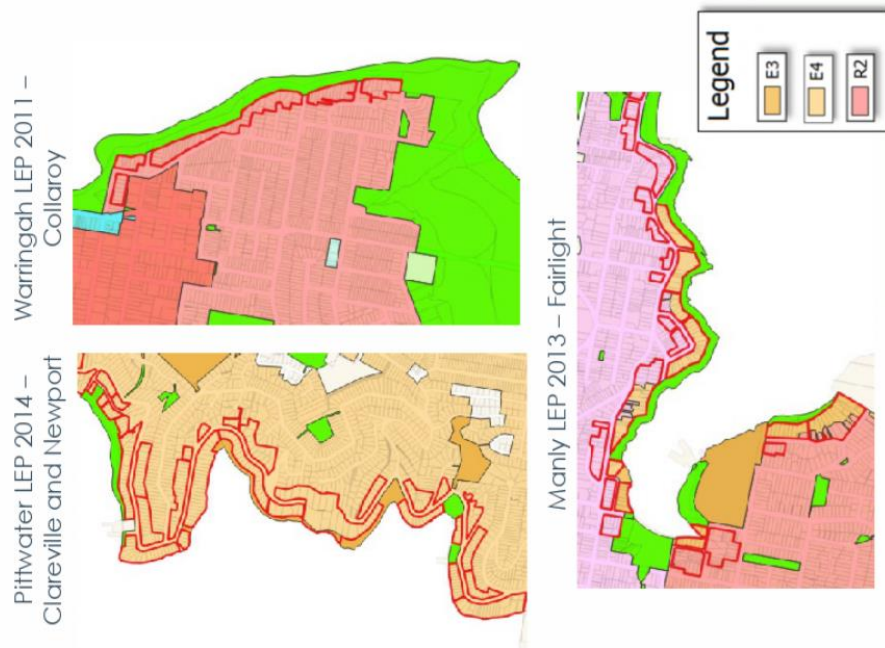
North Harbour

- Higher density residential development with mixed uses along the coastline:
  - Narrabeen, Collaroy and Collaroy Beach, Manly East, Manly and Fairlight



Mona Vale

- Individual residential, single dwellings along the coastline:
  - Church Point, Bayview, Newport, Clareville, Palm Beach, Whale Beach, Avalon Beach, Bilgola Beach, Newport East and Collaroy South, Balgowlah Heights, Clontarf and Seaforth







# Uses permitted with consent

Land uses*	Pittwater LEP 2014 Church Point Bayview Newport Clareville Palm Beach Whale Beach Avalon Beach Billgola Beach Newport East	Warringah LEP 2011 Narrabeen Collaroy Collaroy Beach Collaroy South	Manly LEP 2013 Clontarf Seaford Balgowlah Heights	Manly LEP 2013 Manly East Manly Fairlight
	E4 zone	R2 zone	E3 zone	E4 zone
Dwelling houses				
Secondary dwellings				
Attached dwellings / Dual occupancies / Semi-detached dwellings				
Multi dwelling housing				
Residential flat building				
Exhibition homes				
Group homes				
Boarding houses				
Bed and breakfast accommodation				
Boat sheds				
Jetties				
Child care facilities / Respite day care centres				
Educational establishments				
Places of worship				
Health consulting rooms				
Hospitals				
Aquaculture				
Home industries				
Veterinary hospitals				
Flood mitigation works				

\*This is not an exhaustive list of permitted uses. Prohibited uses have not been listed.

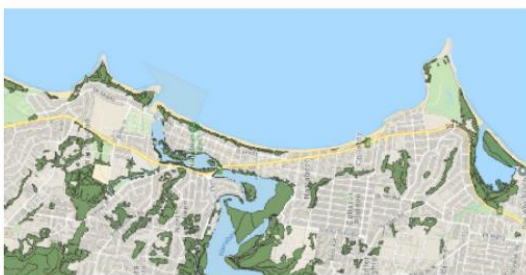
# Key considerations – coastal corridor

- Important corridor for terrestrial movement and interface between land and water
- Provides for a large range of fauna that inhabit this interface such as migratory species
- Manly has additional significance with habitat for the endangered population of Little Penguins on North Head
- Significant biodiversity corridor that runs from North Head along Sydney Harbour foreshore linking up with Garigal National Park
- Parts are subject to coastal hazards such as reduced foundation capacity, wave impact and slope adjustment including Bilgola Beach, Basin Beach and from Narrabeen to Collaroy

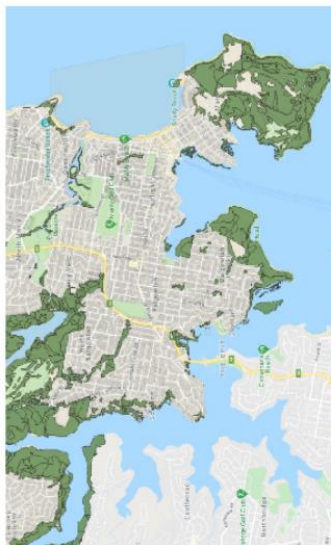
Pittwater peninsula



Narrabeen to Collaroy



Manly foreshore



Native vegetation OEH 2016

# Coastal corridor survey questions

- Higher density residential areas:
  - Narrabeen, Collaroy and Collaroy Beach, Manly East, Manly and Fairlight
- Low density residential areas:
  - Church Point, Bayview, Newport, Clareville, Palm Beach, Whale Beach, Avalon Beach, Bilgola Beach, Newport East and Collaroy South, Balgowlah Heights, Clontarf and Seaforth

9. What uses do you think are suitable in the coastal corridor?

10. For the coastal corridor, what criteria influenced your thinking the most in the last question?

