



MINUTES

PLACES FOR PEOPLE STRATEGIC REFERENCE GROUP

held online via TEAMS on:

THURSDAY 7 MAY 2020

Minutes of the Places for People Strategic Reference Group held online via TEAMS

ATTENDANCE:

Committee Members

Cr Ian White (Chair)	
Mayor Michael Regan	
Cr Stuart Sprott	
Caroline Ghatt	Play for all Australia
Jim Koopman	
Sita Mason	Youth Representative
Mark Lowe	
Merinda Rose	
Miranda Korzy	
Maryann Novakovic	
Suzanne Cairns	Manly Dogs
Richard Michell	Manly, Warringah and Pittwater Historical Society

Council Officer Contacts

Louise Kerr	Director Planning and Place
Andrew Pigott	Executive Manager Strategic and Place Planning
Steven Lawler	Executive Manager Parks and Recreation
Damian Ham	Manager Open Space and Recreation Planning (<i>item 6.1</i>)
Jessica Currie	Coordinator Recreation Planning (<i>item 6.1</i>)
Neil Cocks	Manager Strategic and Place Planning
Toby Philp	Principal Planner
Rebeca Sio	Planner
Ximena Von Oven	Governance Officer

1.0 ACKNOWLEDGEMENT OF COUNTRY

As a sign of respect, Northern Beaches Council acknowledges the traditional custodians of these lands on which we gather and pays respect to Elders past and present.

2.0 APOLOGIES

APOLOGY

Cr Sprott / M Rose

Apologies were received from Cr Bingham, S Pearse and L Irwig.

3.0 DECLARATION OF PECUNIARY AND CONFLICTS OF INTEREST

M Rose / Cr White

There were no declarations of pecuniary or non-pecuniary conflicts of interest.

4.0 CONFIRMATION OF MINUTES OF PREVIOUS MEETINGS

4.1 MINUTES OF PLACES FOR PEOPLE STRATEGIC REFERENCE GROUP MEETING HELD 6 FEBRUARY 2020

M Rose / Cr White

That the Minutes of the Places for People Strategic Reference Group meeting held 6 February 2020, copies of which were previously circulated to all Members, are hereby confirmed as a true and correct record of the proceedings of that meeting.

5.0 UPDATE ON ACTIONS FROM LAST MEETING

The following action will be completed at a future Places for People Strategic Place Reference Group meeting:

That a report on the updated Urban Canopy Policy be brought back to the group in 2020.

6.0 AGENDA ITEMS

6.1 OPEN SPACE AND RECREATION STRATEGY UPDATE

OVERVIEW OF UPDATE

J Currie, Coordinator Recreation Planning provided a presentation on this topic. The consultation, emerging findings and project timeline were presented to the group. A copy of the presentation is attached to the minutes as attachment 1.

ITEMS DISCUSSED

Consultation Update – several activities like social pinpoints, off road cycling survey, stakeholder group consultation have been undertaken as part of the consultation stage. Responses are being assessed and analysed.

Ideas in regard to community gardens were received through the community engagement process and it was suggested that a Community Gardens policy should be considered as part of the strategy.

Emerging Findings – as a result of the consultation stage the following topics have been highlighted as recurrent findings amongst the community:

- Value of natural and peaceful areas
- Ensure protection of conservation areas
- Need for supporting infrastructure, trail connections and park improvements
- Increase public access
- Need for new and improved recreations facilities

Project Timeline

- Community Consultation – May to June 2020
- Preparation of the draft Open Space Recreation Strategy – June to August 2020
- Public exhibition of the draft Open Space Recreation Strategy – September 2020

It was highlighted that on walking paths, bikes must give way to people walking, walkers are the priority unless is a dedicated track for bikes.

The following question was raised during the discussion:

QUESTION:

Which particular recreational activity came up as being practiced the most by the community?

ANSWER:

Mountain biking is a popular activity amongst community members. Request for new and improved trails was highlighted.

It was noted that members of any group (resident groups, special interest groups, recreation user groups) can contact the Coordinator Recreation Planning to provide any additional feedback.

6.2 NORTHERN BEACHES LOCAL HOUSING STRATEGY

OVERVIEW OF UPDATE

P Fensham, Principal and Partner of SGS Economics and Planning provided a presentation on this item. The Local Housing Strategy (LHS) must align with the LHS Guideline prepared by NSW Department of Planning, Industry and Environment. The LHS will set a vision for future housing in the Northern Beaches LGA. The following topics were discussed:

- Update to population projections

- Outline of the Local Housing Strategy
- Spatial approach to planning for housing across the LGA
- Targeted approach around centres
- Exemptions to Government State Policies

A copy of the presentation is attached to the minutes as attachment 2.

Items discussed

- For the Northern Beaches the LHS adopts a 6-10 year target of 3,582 dwellings.
- The preferred spatial approach is based on building in long term capacity for growth around key centres with good transport accessibility like for example Brookvale, Dee Why, Mona Vale, Manly Vale. These areas will be studied and investigated for potential dwelling capacity.
- Need for affordable housing
- Provision of boarding Houses, seniors accommodation and medium density houses options as an alternative to houses provided under the Seniors State Environmental Planning Policy (SEPP)
- Diversity of housing type to meet housing needs as demographics change over time
- Better transport connectivity and sustainable growth

The following points were raised by SRG members:

- Concerns about too many new dwellings in Mona Vale.
- More needs to be done to promote the importance and value of social/affordable housing.
- When face to face meetings start again members should be invited via TEAMS so if someone can't attend in person they can still join the meeting online via TEAMS.

6.3 NORTHERN BEACHES LOCAL CHARACTER STUDY

OVERVIEW OF UPDATE

M Easton, Principal of Tract Consultants provided a presentation on this topic. The Northern Beaches LGA has been analysed with regards to local character areas. The study reviewed the following topics:

- Access corridors
- Local Character Precincts
- Mapping of local character precincts, local character corridors and scenic protection areas to provide a spatial overlay for consideration within the Northern Beaches strategic planning framework

A detailed community engagement plan is under preparation.

A copy of the presentation is attached to the minutes as attachment 3.

7.0 GENERAL BUSINESS

COVID-19 discussion

SUMMARY OF ACTIONS

ITEM NO.	ACTION	RESPONSIBLE OFFICER	DUE DATE
	That a report on the updated urban Tree Canopy Policy be brought back to the Places for People Strategic Reference Group	Steve Lawler	Future SRG meeting

Attachments

- Attachment 1 – Open Space and Recreation Strategy Update Presentation
- Attachment 2 – Northern Beaches Local Character Study Presentation

The meeting concluded at 8:14pm

This is the final page of the Minutes comprising 6 pages numbered 1 to 6 of the Places for People Strategic Reference Group meeting held on Thursday 7 May 2020 and confirmed on Thursday 6 August 2020

Open Space and Recreation Strategy: *Emerging Findings*

Places for People SRG 7 May 2020



Outline

- Consultation Update
- Emerging Findings
- Project Timeline



Consultation Update (stage 1)

Activity	Completion	Results analysis
Social Pinpoint	Completed	1,458 responses being analysed
Off Road Cycling Survey	Completed	1,363 responses being analysed
Telephone Survey	Early June (on hold since March)	Pending
Targeted consultation with 250 groups (E.g. residents groups, special interest groups, State Park Advisory Committees, recreation user groups)	Recommenced 30 April but face to face meetings still on hold	Initial feedback being analysed (from pre COVID-19)
Off Road Cycling Stakeholder Group	Ongoing	List of proposals being assessed

- Stage 2 consultation will be the public exhibition of the draft Strategy in late 2020

Emerging Findings

- People value natural, peaceful areas
 - To relax and observe and connect with nature
- Ensure protection of conservation areas
 - Limit development and infrastructure
- Need for supporting infrastructure, trail connections and park improvements to allow people to stay longer
 - E.g. water, seating and toilets at beaches, trails and fitness equipment
- Requests for increased public access
 - E.g. Access to beaches and sportsfields personal recreation including fitness and dog walking
- Requests for new/improved recreation facilities
 - E.g. Off road cycling trails and facilities, playground upgrades, fitness equipment

Project Timeline

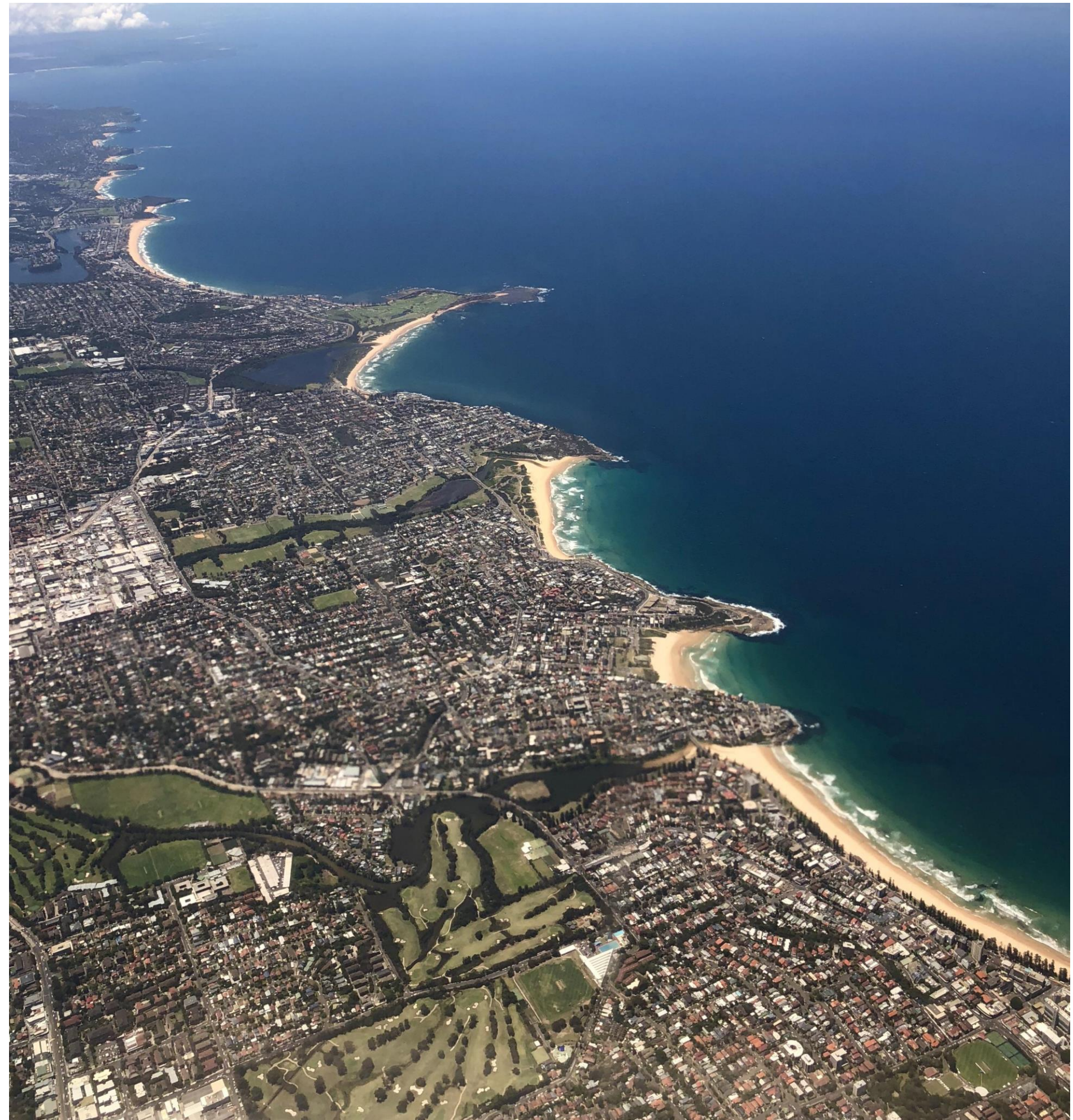
• Complete stage 1 community consultation	May – June 2020
• Prepare draft Open Space and Recreation Strategy	July – August 2020
• Report to Council requesting public exhibition of draft Strategy	29 September 2020



Northern Beaches Local Character Study

- Project Introduction

Attachment 2



Tract

Council has engaged Tract Consultants to prepare the Local Character Study (incorporating a scenic and cultural landscape assessment) generally in accordance with the NSW Department of Planning, Industry and Environment's *Local Character and Place Guideline*.

The key components of the study will include:

- the identification of unique local character precincts, local character corridors and valued scenic and cultural landscapes within the LGA
- mapping of local character precincts, local character corridors and scenic protection assets to provide a spatial overlay for consideration within the Northern Beaches strategic planning framework
- design and scenic protection recommendations for each local character precinct and local character corridor to guide the desired future character of these areas

Tract has been analysing the context of the Northern Beaches LGA and those areas that can potentially be developed.

This analysis has entailed a review of both the :

- **Access Corridors** - which service and connect it to the broader Sydney area; and consequently shape perceptions and experiences of visitors and residents alike
- **Local Character Precincts**

To achieve this:

- A series of site visits and place investigations which have covered the entire Northern Beaches LGA.
- The photographic records from each of the site visits have been analysed and notes made on specific elements important to local character.
- A review of the background studies undertaken as part of the LSPS and previous planning studies to inform and gain an understanding of what has shaped and the values that are shaping the development of the LGA
- From this analysis we have developed a methodology to define the precincts both along the corridors or within the broader LGA.



For both character types we have identified two core characteristics which define the character, these are:

- The Built Environment – describing the man-made context which is responsive to social and cultural factors



- The Natural Environment –describing natural systems comprising environmental settings, and topography



Corridor Analysis:

In reviewing the corridors with have identified six key corridors:

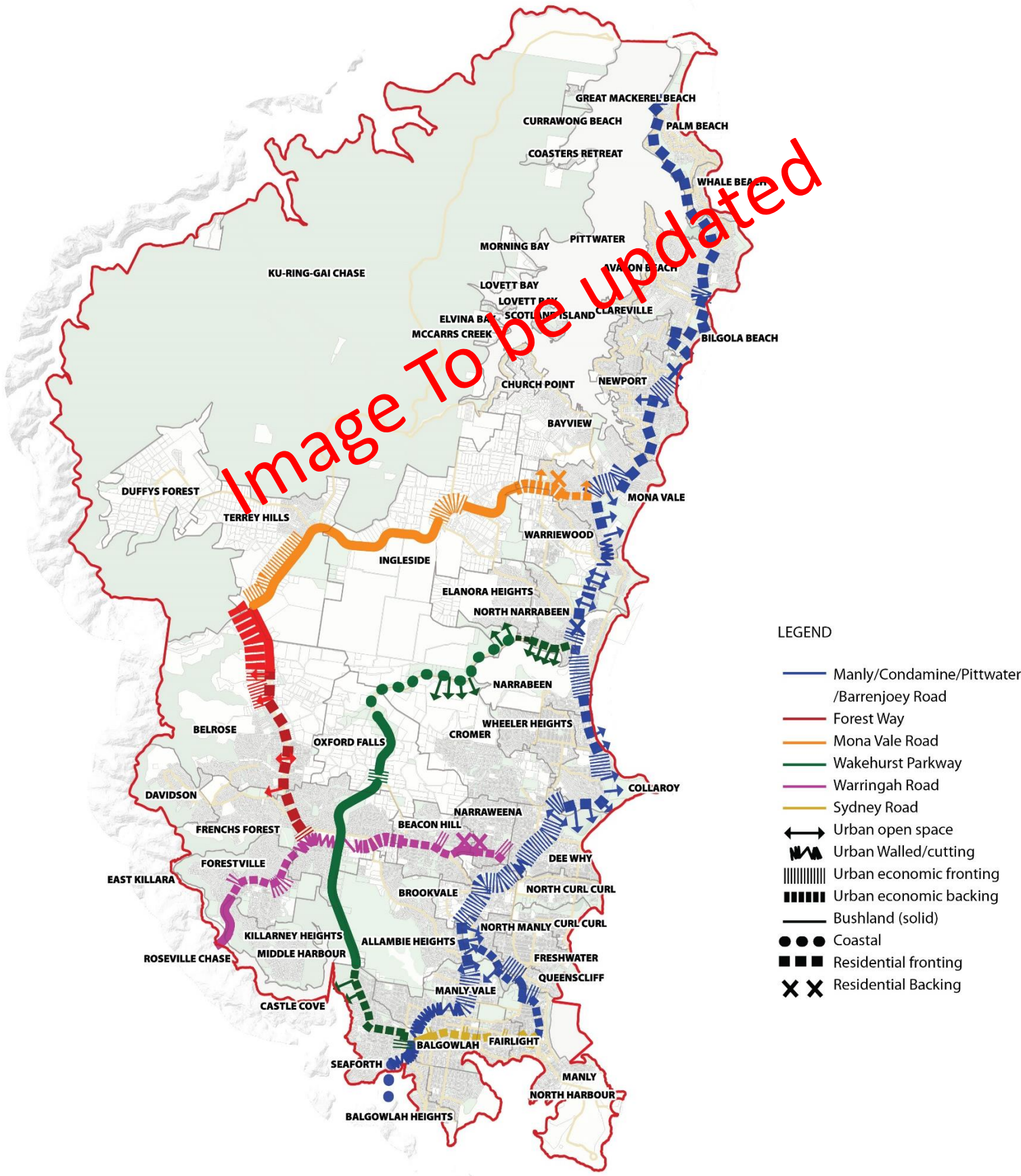
- Manly Road, Condamine Street, Pitt water Road and Barrenjoey Road
- Forest Way
- Mona Vale Road
- Wakehurst Parkway
- Warringah Road
- Sydney Road

Due to the nature of these corridors we have used the Built Environment as the primary defining element. This has resulted in six core character settings:

- Urban Open space
- Urban Walled Cutting
- Urban Economic fronting
- Urban Economic backing
- Residential Fronting
- Residential Backing

We have then applied the natural environment as a modifier where the natural setting is of greater influence. Two attributes in this regard have been adopted

- Coastal
- Bushland



Precinct Analysis:

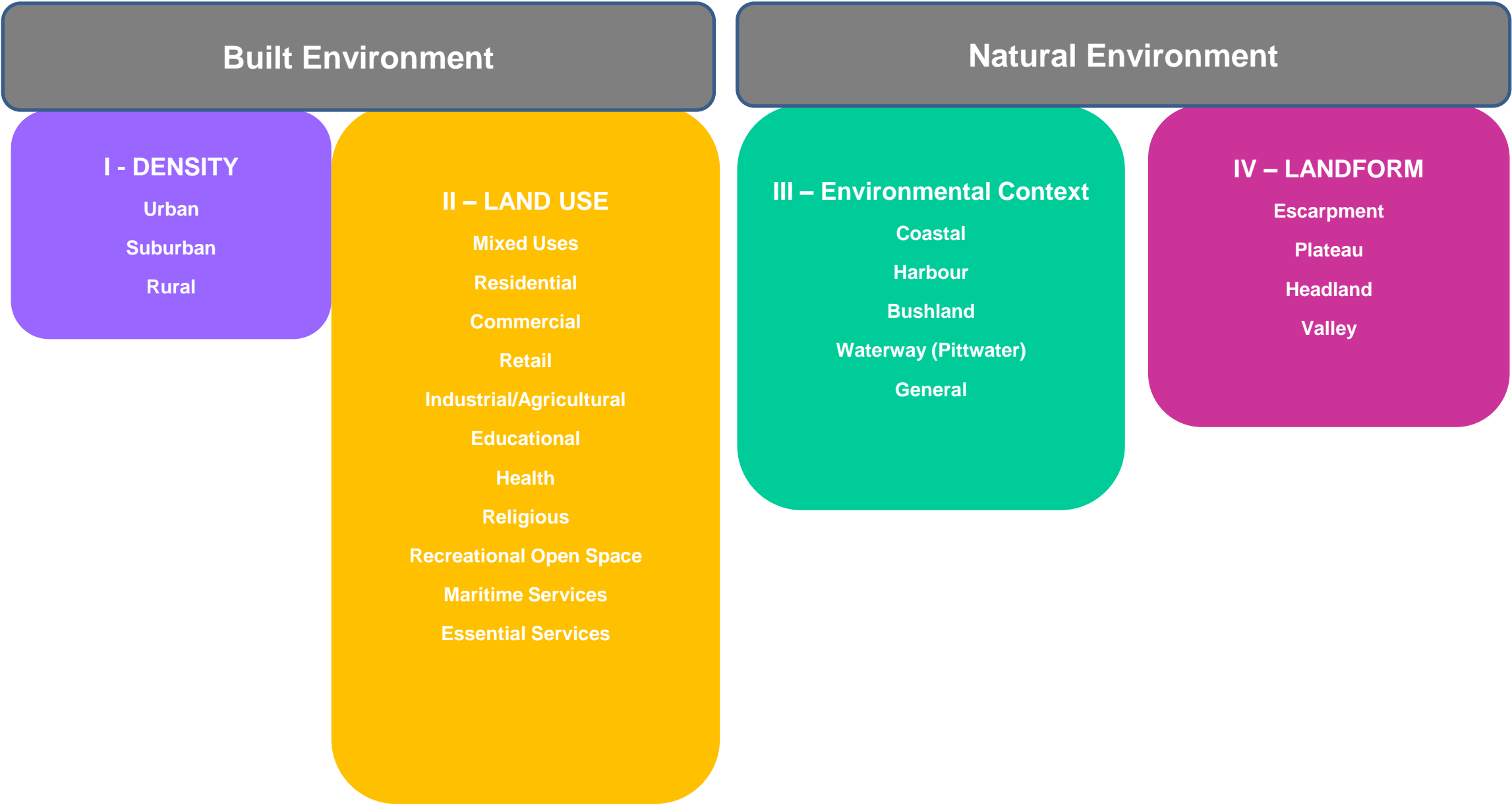
These characteristics are broken down into four defining characteristics (four pillars) which are reflected in the following figure and described below.

For the **Built Environment** these are:

- *Density* of the development - this reflects the characteristics of an urban, suburban or rural environment
- *Land Use* for which the precinct functions – reflecting typical zonings used within the planning system

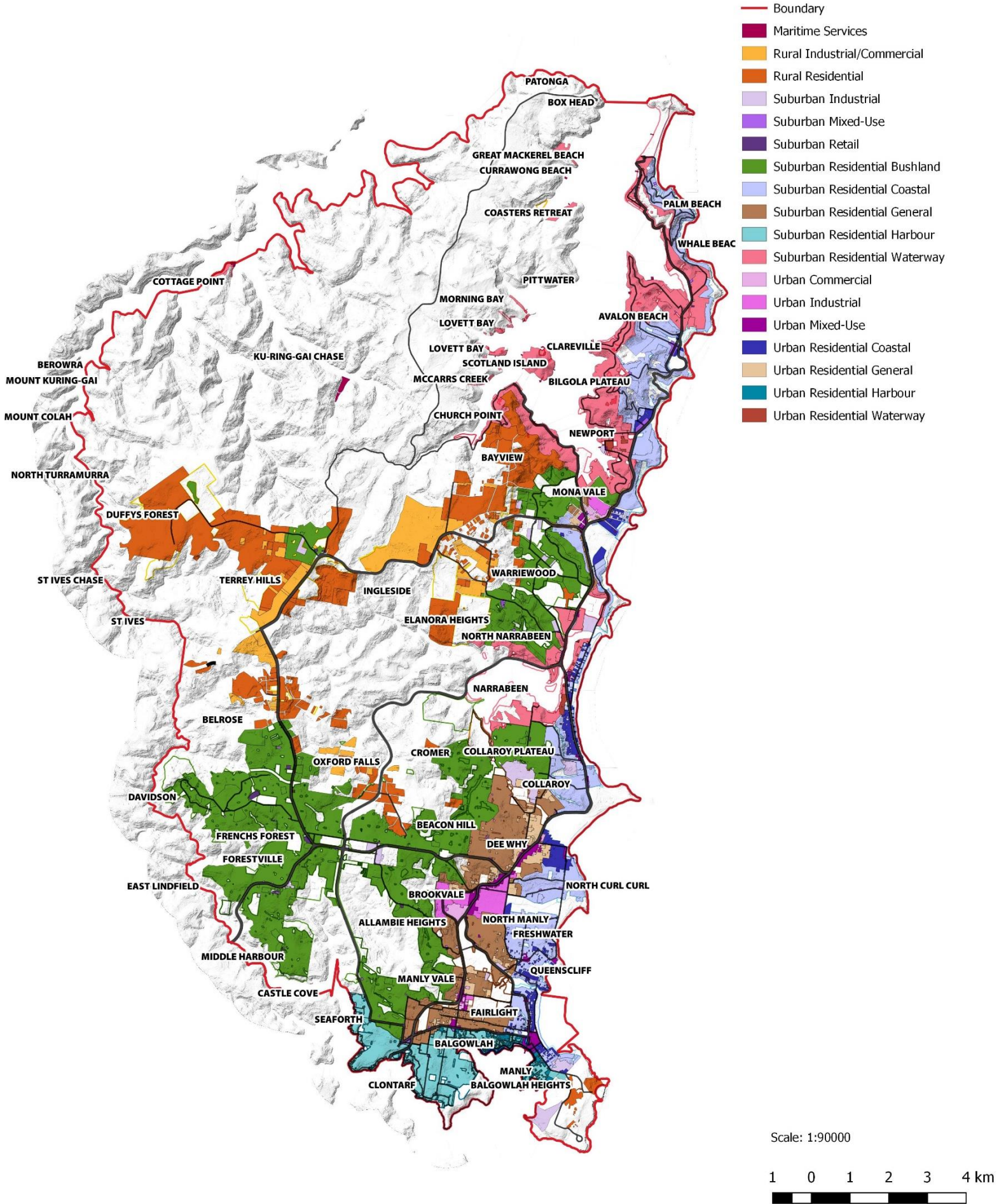
For the Natural Environment these are:

- *Environmental Context* – defined as Coastal, Harbour, Bushland, Waterway, and general
- *Landform* - which looks at topography as a means to further delineate the precinct qualities further including: Escarpment, Plateau, Valley and Headland.



18 Local Character Precincts

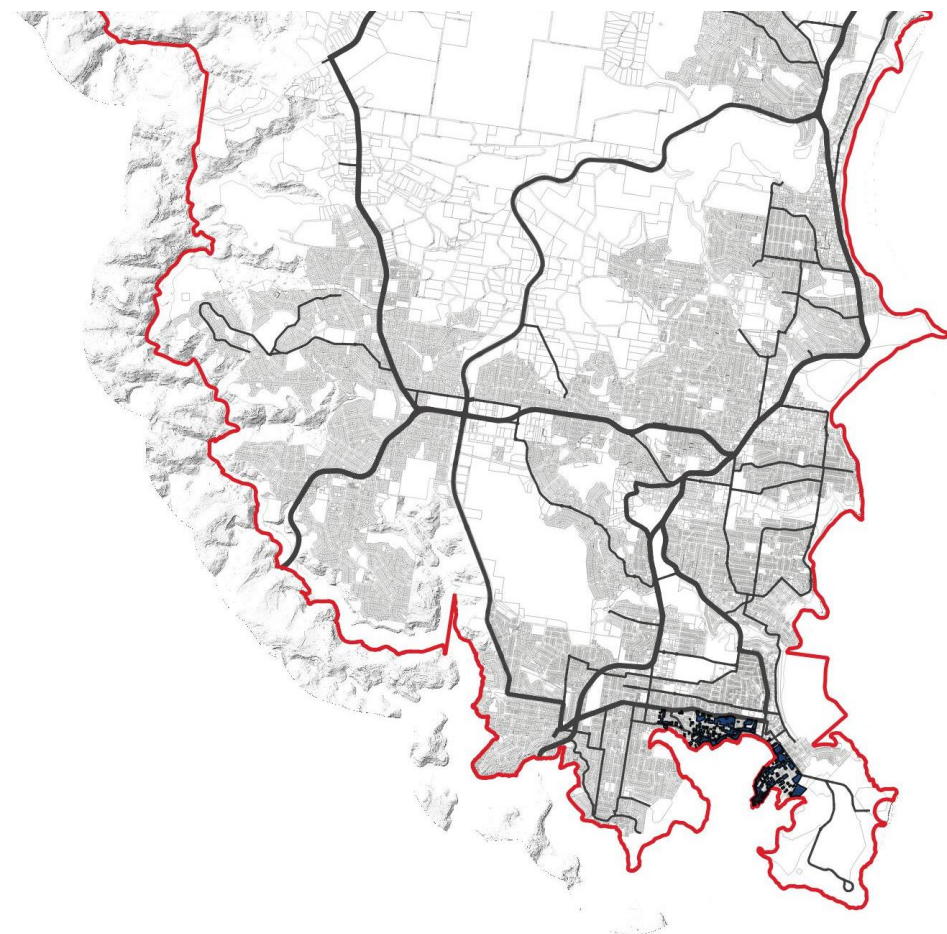
- Urban Residential Harbour
- Urban Residential Coastal
- Urban Residential Waterway
- Urban Residential General
- Urban Mixed Use
- Urban Commercial
- Urban Industrial
- Suburban Residential Harbour
- Suburban Residential Coastal
- Suburban Residential Bushland
- Suburban Residential Waterway
- Suburban Residential General
- Suburban Industrial
- Suburban Retail
- Suburban Mixed Use
- Rural Residential
- Rural Industrial / Commercial
- Maritime Services



Precinct Analysis Example: Urban Residential Harbour

This character precinct is characterised by:

- Connection to Sydney Harbour,
- High-density residential development either in combination with or without mixed uses.
- Dominated by built elements with reduced canopy cover and increased pavement.
- Structures are designed to take benefit of views and solar orientation is to the south west as a result of general slope of the land.
- Built form is that of an established area.



Scale: 1:90000

1 0 1 2 3 4 km



Scenic Values

"Scenic and landscape values encompass both the inherent value of the physical landscape and the value given to the landscape by the people who view it."

Objective is to :

- Understand the broad landscape setting
- identify areas of scenic and cultural value.

Achieved by Visual assessment including:

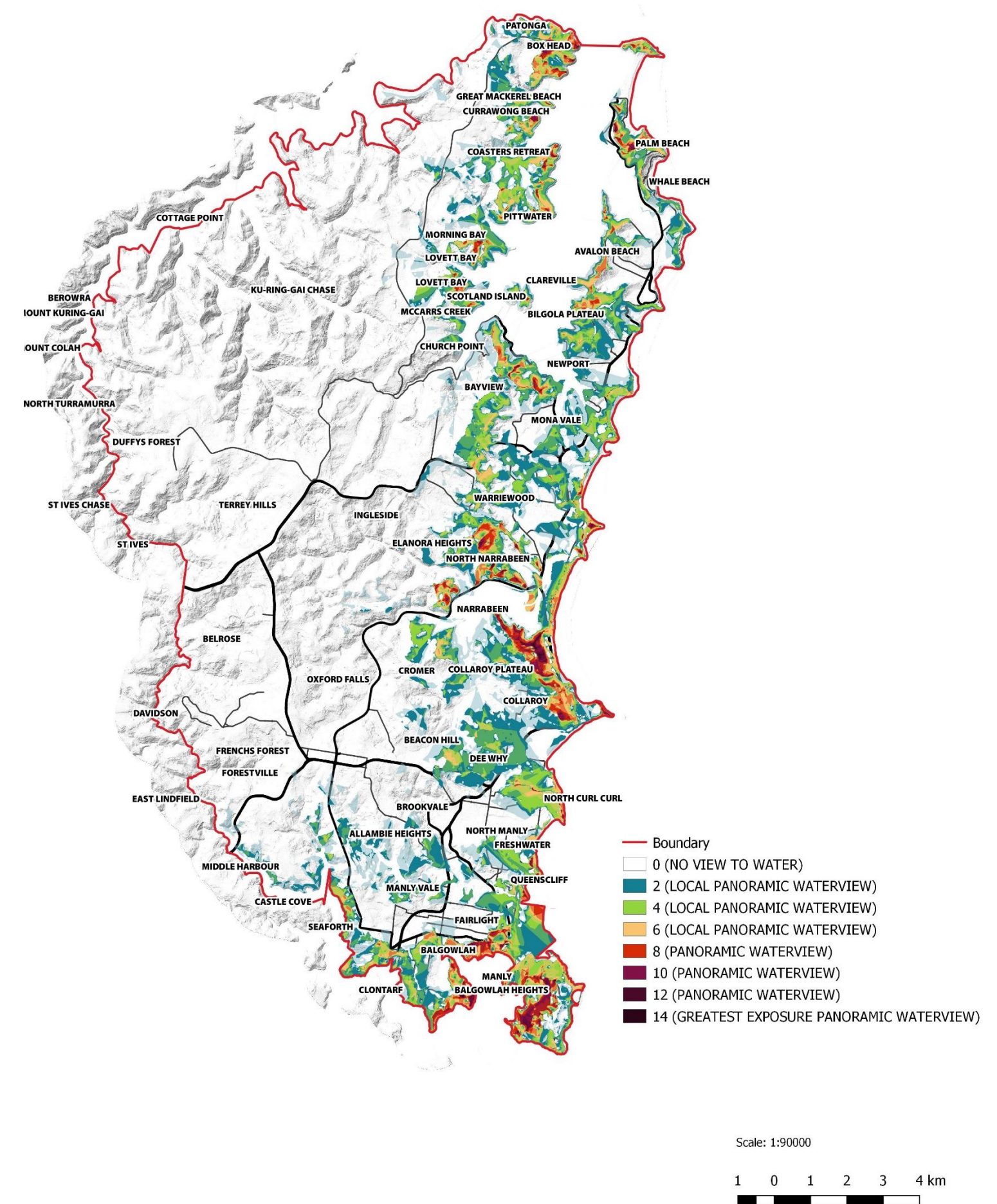
- Determination of visual catchment
- Key views

As well as

- understanding cultural attitudes to certain landscapes

Findings:

Provide a basis for measures to be incorporated into the development of future plan and planning directions



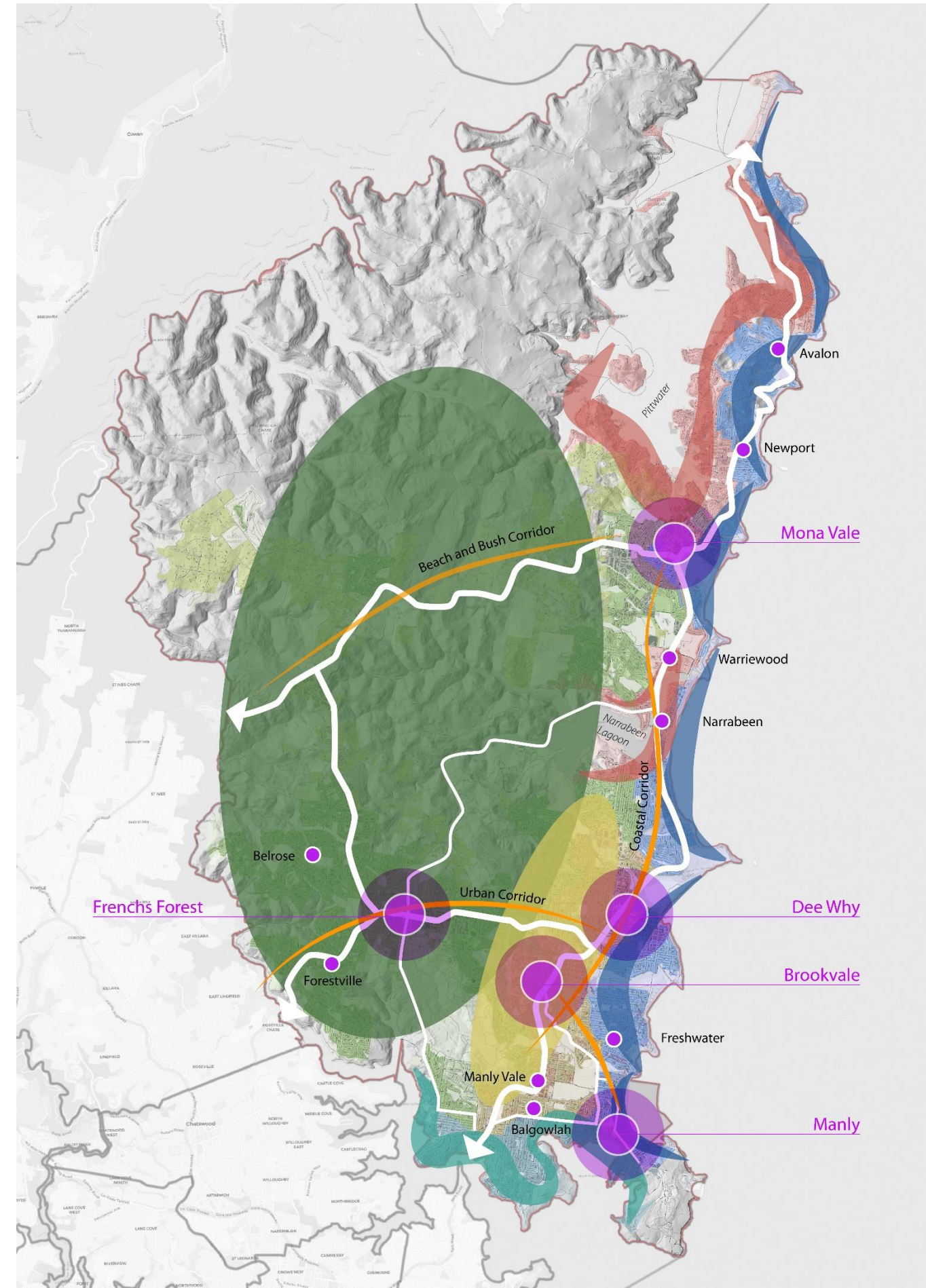
Ongoing work

While the overall documentation continues to be developed two key areas are just commencing as part of the commission

Future Character is:

- an assessment of the character observations as to the various precincts ability to accommodate change and the nature of the changes that could occur while maintaining or enhancing the overall place character.
- the development of this section will both connect with other strategies but ultimately talks to the place and the places values as perceived through our analysis

Purpose of this assessment is to establish potential character issues and approaches which may inform the way places develop in the future so that they can be considered for incorporation as part of the planning documents.



Ongoing work

Consultation –

- Details of the consultation phase of the commission continue to be developed based on changing requirements of Covid19.