

Minutes

Mona Vale Performance Space Committee Meeting #1

Held on Wednesday 07 March 2018

In the Level 3 Conference Room commencing at 6pm

In Attendance

- Michael Regan – Mayor (Chair)
- Cr Kylie Ferguson
- Cr Ian White
- Cr Penny Philpott
- Mark Jones – Executive Manager, Transformation & Performance
- Kylie Walshe - Executive Manager, Community, Arts and Culture
- Chris Kavanagh, Mona Vale Chamber of Commerce
- Greg Jones – Principal, Mona Vale Public School (Department of Education)
- Martin Hardy – Community Member
- Martin McCallum – Community Member
- Stephen Buchanan – Community Member
- Judith Knott – Community Member

Project Staff

- Eilis O'Beirne – Major Projects Business Executive (Project Manager)
- Kara Nunan – Project Coordinator, Business Performance
- Lindy Riese – Community Engagement

Apologies

- Michelle Johns – Director, Northern Sydney Asset Management Unit (Department of Education)

Purpose of meeting:

To discuss the direction of the Mona Vale Performance Space Project.

1 Welcome and Introductions

The Mayor welcomed the Committee Members to the meeting and introductions were made.

2 Committee Governance

The proposed Governance Framework for the Mona Vale Performance Space Project was run through as below:

Project Advisory Committee

Includes major stakeholders including Department of Education

Project Steering Group (PSG)

Provides direction of project operations

Project Development

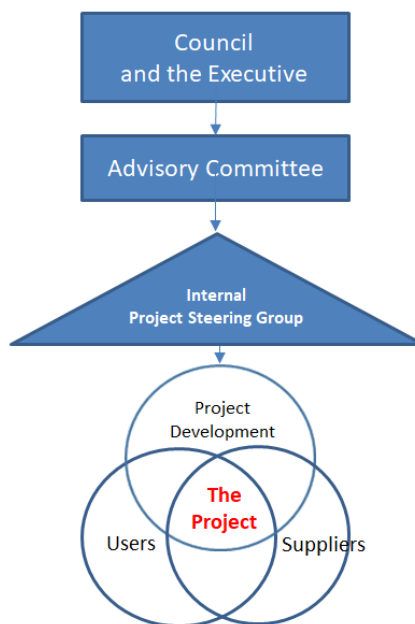
Meets the need of the Executive and Council and provides value for money

Users

Represent the Users and Stakeholders

Supplier

Represents the skills to produce the building process



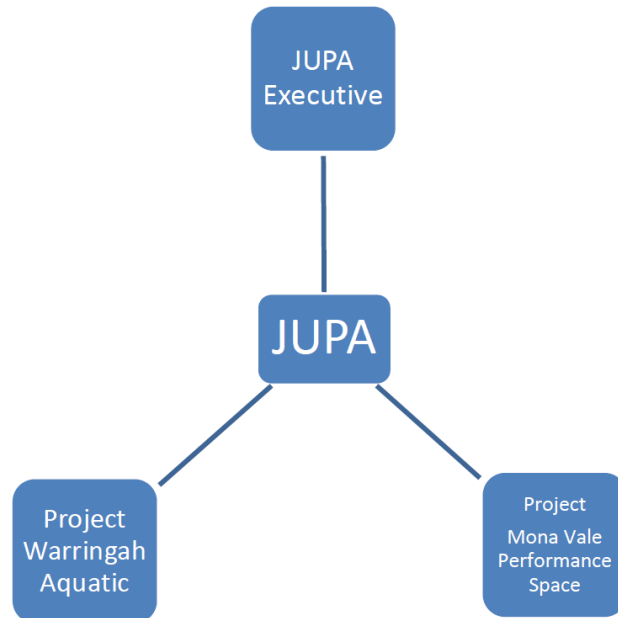
JUPA (Joint User Project Agreement Advisory Committee)

Relationship between the Northern Beaches Council and JUPA for this project:

JUPA Executive: Northern Beaches Council CEO and Director of Planning

Joint User Project Agreement: Advisory Committee Includes reps from Education and Council

Joint Projects



A Memorandum of Understanding (MOU) will be put in place. A formal Joint Use Project Agreement for each project will be developed between Council and the Department of Education.

3 Code of Conduct

A hard copy of the Code of Conduct was provided for the Committee to read.

4 Current scope of project

Location/site

- Mona Vale Public School, corner of Bungan and Waratah Streets
- 4087m²
- Tennis court relocation is factored into the cost of the project
- What traffic issues will there be, will a study be undertaken?
- Establishing a soul for Mona Vale

Consultants

- Value Network was appointed on 2nd March 2018.
- Vision to be defined

Community Consultation and Engagement

- Advisory Committee

- Special interest groups – contemporary musicians, technical, film, environment/sustainability
- Timing: March – May 2018

Proposed built form:

- Auditorium 600-1000 seats
- Stage size for concert orchestra 15 x 10m
- Warm up and rehearsal spaces
- Music rehearsal rooms
- Low tech
- Potential retail/commercial
- Car parking (possibly underground)
- The space will be a Performance Space not a Theatre. It will not compete with Council's other venue at Glen St Theatre

Considerations:

- School usage versus Council operated facility
- Traffic Management Plan

5 Needs of performance and rehearsal space? What do the community want?

Focus questions:

The Advisory Committee Members were asked three focus questions about the project and the needs of a performance and rehearsal space in the community. This was to generally establish what the community want.

Who do you think should be consulted?

- All Northern Beaches artistic community from Manly to Palm Beach
- Local music groups/bands/orchestras/singing groups
- Local drama/theatre groups
- Local schools/teachers/P&C Committees/parents/Heads of Performing Arts
- Local youth groups
- Dance schools
- Green Building Councils
- Local seniors groups/aged care facilities
- Disability groups (access consultant)
- Members of ensembles
- Members of choirs

- Chamber of Commerce
- Local residents
- Mothers Groups
- Local Businesses

What do you want the Performance Space to be?

- Include a gallery to exhibit painting and sculpture
- Multi-purpose space – not just a school hall
- A place for music, arts and education
- Centre of excellence
- A place for young people to perform and compose
- Chairs that go under the stage for a mosh pit
- Moveable seats to maximise the use of the space
- Home for community based ensembles
- A centre to pull people into Mona Vale after hours
- An afterhours youth hub
- Include an outdoor space (for performance)
- Ability to host popular music
- Place for all to feel welcome
- Capacity of at least 1500 to make it a viable after hours space
- Within 100m of almost 1000 after hours parking spaces and on the B line
- Pleasing to look at
- Comfortable
- Café respecting good sustainable principles (i.e. no take away cups), licenced
- Sustainable – using ‘green’ materials/products
- Feasible
- Music school
- Centre for music of all genres
- Great acoustics
- A space that engages visitors on a number of levels
- Multi stage
- Concert venue

- Small concert venue
- Rehearsal space
- A destination – somewhere the community wants to go
- Garden wall and space on ceiling
- A place for school bands
- Bar

What you don't want the Performance Space to be?

- A place to play sport/Sporting facility
- Small, confined and limited/too small
- Not a skateboard park
- Too big
- No cut corners
- Generate waste
- Multi-purpose space
- Commercial
- Single use hall
- Hi tech
- Lack of parking

Mayor Michael Regan suggested having multiple sites for performance, car parking and rehearsal spaces. Greg Jones said that this would only work if the performance space is located on the Mona Vale Public School site.

6 Next Meeting – Project Vision and Objectives Workshop

11th April 2018, 4.00pm, Mona Vale Public School