



AGENDA

PLACES FOR PEOPLE STRATEGIC REFERENCE GROUP

Notice is hereby given that a meeting of the Places for People Strategic Reference Group will be held in the Coastal Environment Centre, Narrabeen on

THURSDAY 16 MAY 2019

Beginning at 6:00pm for the purpose of considering matters included in this agenda.

Committee Members

Cr Ian White (Chair)	
Mayor Michael Regan	
Cr Candy Bingham	
Cr Stuart Sprott	
Caroline Ghatt	Play for all Australia
Stephen Pearse	
Jim Koopman	
Sita Mason	Youth Representative
Mark Lowe	
Merinda Rose	
Les Irwig	
Miranda Korzy	
Maryann Novakovic	
Suzanne Cairns	Manly Dogs
Richard Michell	Manly, Warringah and Pittwater Historical Society
Kelvin Milsom	Northern Beaches Junior AFL Association, Manly Warringah Pittwater Sporting Union

Council Officer Contacts

Andrew Pigott	Executive Manager Strategic & Place Planning
Steven Lawler	Executive Manager Parks & Recreation
Sherryn McPherson	Governance Coordinator

Quorum

A majority of members including the Chair or one of the elected Councillors.

**Agenda for Places for People
Strategic Reference Group Meeting
to be held on Thursday 16 May 2019
in the Coastal Environment Centre, Narrabeen
Commencing at 6:00pm**

1.0	APOLOGIES	4
2.0	DECLARATION OF PECUNIARY AND CONFLICTS OF INTEREST	4
3.0	CONFIRMATION OF MINUTES OF PREVIOUS MEETING	
3.1	Minutes of Places for People Strategic Reference Group meeting held 13 February 2019	4
4.0	UPDATE ON ACTIONS FROM LAST MEETING	5
5.0	AGENDA ITEMS	6
5.1	Naming Our Places and Providing Memorial Benches.....	6
5.2	Local Strategic Planning Statement Update.....	8
6.0	GENERAL BUSINESS	

NEXT MEETING Thursday 15 August 2019

1.0 APOLOGIES

All members are expected to attend the meetings or otherwise tender their apologies to the Chair and Governance at councilmeetings@northernbeaches.nsw.gov.au.

2.0 DECLARATION OF PECUNIARY AND CONFLICTS OF INTEREST

Members are advised of the following definitions of a "pecuniary" or "conflict" of interest for their assistance:

Section 442 of the Local Government Act, 1993 states that a "pecuniary" interest is as follows:

"(1) [Pecuniary interest] A Pecuniary interest is an interest that a person has in a matter because of a reasonable likelihood or expectation of appreciable financial gain or loss to the person or another person with whom the person is associated.

(2) [Remoteness] A person does not have a pecuniary interest in a matter if the interest is so remote or insignificant that it could not reasonably be regarded as likely to influence any decision the person might make in relation to the matter."

Members should reference the Local Government Act, 1993 for detailed provisions relating to pecuniary interests.

Council's Code of Conduct states that a "conflict of interest" exists when you could be influenced, or a reasonable person would perceive that you could be influenced by a personal interest when carrying out your public duty.

3.0 CONFIRMATION OF MINUTES OF PREVIOUS MEETING

3.1 MINUTES OF PLACES FOR PEOPLE STRATEGIC REFERENCE GROUP MEETING HELD 13 FEBRUARY 2019

RECOMMENDATION

That the Minutes of the Places for People Strategic Reference Group meeting held 13 February 2019, copies of which were previously circulated to all Members, be confirmed as a true and correct record of the proceedings of that meeting.

4.0 UPDATE ON ACTIONS FROM LAST MEETING

Summary of Actions

ITEM NO.	ACTION	NOTES	RESPONSIBLE OFFICER	DUE DATE
5.1	MY PLACE: AVALON That this item be brought back to the Places for People SRG in May 2019	This item will be brought back to the committee in August 2019.	A Newbery / A Pigott	May 2019
5.2	Naming Northern Beaches Open Spaces and Facilities That this item be brought back to the Places for People SRG in May 2019	Item 5.1 on the Agenda	V Blasket / A Pigott	May 2019

5.0 AGENDA ITEMS

ITEM 5.1	NAMING OUR PLACES AND PROVIDING MEMORIAL BENCHES
REPORTING OFFICER	MANAGER, BUSINESS OPERATIONS
TRIM FILE REF	2019/086693
ATTACHMENTS	NIL

ISSUE

Council resolved on 18 December 2018 to prepare a Policy in relation the naming of Parks, Reserves (including the facilities within these) and buildings. Council is required to adhere to the Geographic Names Board (GNB) Policy and process, however the naming of facilities on public land such as buildings, pavilions, pools and gardens is not officially included in the GNB Policy and Council is seeking direction on how to manage these naming requests.

Once a new policy is ready for presentation to Council any relevant former policies require rescinding. In the case of the naming policies, one former Council had also included the provision of memorials and commemorative plaques within their naming policy. If Council wishes to continue to install memorial plaques commemorating individuals on public open space a new policy will be required.

BACKGROUND

On the 13 February 2019, the Places for People Strategic Reference Group discussed the development and direction of this new Policy. Considering feedback from the workshop a draft Policy for the naming of our places and facilities has been developed. The draft principles include:

- Any requests to name or rename facilities or assets on open space will be managed according to the Geographic Names Board Act and Policy. This includes the rules and criteria around naming places after individuals.
- Only those requests that meet the GNB criteria will be presented to Council for consideration. Other requests will be rejected and an explanation provided based on the GNB Policy.
- Council will provide the opportunity for the community to be involved in the processing of requests for the naming or renaming of all parks, reserves, roads, buildings and facilities.
- When naming sporting areas and major reserves visited by many people from beyond Council's boundaries, preference will be given to locality or geographical names to assist in travelling to and locating the area, e.g. Beacon Hill Reserve. The facilities and assets on these land areas such as buildings, pavilions and sporting infrastructure should also be named in alignment with the geographical location and the core function of the asset to assist in locating, addressing and communication.
- When naming parks and natural reserves, preference will be given to the use of historical names, aboriginal words (e.g. Goombooya Reserve) and the names of indigenous species of plants, birds and animals (e.g. Angophora Reserve, Cabbage Tree Park)

The former Warringah Council's Memorials, Plaques and Naming of Assets Policy provided for the installation of memorial plaques on Council furniture. Both former Manly and Pittwater Councils have a specific policy on the provision of the plaques on park furniture.

The development of a new Policy for Naming our Places and Facilities dictates that the Council also determines the direction it wishes to take for the provision of memorial plaques particularly on park furniture.

There are over 550 memorials in our open space and it is becoming increasingly difficult to provide locations for the numerous requests received. There is a particularly high saturation of memorial benches on the headlands and foreshores, which are still the most requested location.

DISCUSSION

A workshop will be held at the SRG meeting on the 16 May 2019 to discuss the core principles within the draft Naming our Places and Facilities Policy.

At this workshop it is also intended to discuss the provision of memorial plaques on park furniture and consider other commemorative options.

RECOMMENDATION OF MANAGER, BUSINESS OPERATIONS

That the Places for People Strategic Reference Group acknowledge the background information related to the naming of places and facilities and the provision of memorial benches in preparation for a discussion on the 16 May 2019.

ITEM 5.2	LOCAL STRATEGIC PLANNING STATEMENT UPDATE
REPORTING OFFICER	PLANNER
TRIM FILE REF	2019/214014
ATTACHMENTS	1 ↓ Towards 2040 Draft Priorities - April 2019 2 ↓ Towards 2040 - Presentation

EXECUTIVE SUMMARY

PURPOSE

To update the Places for People SRG on the progress of the Northern Beaches Local Strategic Planning Statement.

SUMMARY

In March 2018, all Councils in Metropolitan Sydney were directed to create a Local Strategic Planning Statement (LSPS) for their local government area. Northern Beaches Council commenced this project soon after, including the community engagement component of this project in January 2019.

Following community engagement, internal engagement, in-depth research and the commencement of various technical studies, Council is now preparing the draft Northern Beaches LSPS, called 'Towards 2040', for exhibition later in 2019.

This report summarises the progress of this project to date, and includes the draft LSPS Towards 2040 priorities.

REPORT

Development of LSPS 'Towards 2040'

The following tasks are either completed or underway and will contribute to the development of 'Towards 2040':

- Local Environmental Plan (LEP) Health Check – Completed November 2018.
- Demographic Analysis – Underway.
- Housing Study, Discussion Paper and Strategy - Underway.
- Employment Study - Underway.
- Social Infrastructure (including open space and recreation) Study - Underway.
- Establishment of tender for Environment Study – Underway (in conjunction with Natural Environment Team).
- Internal staff engagement workshops – Completed February to March 2019.
- Assurance Review by Greater Sydney Commission, Department of Planning, Transport for New South Wales and the Department of Health – Completed 8 April 2019.
- Workshop with technical study consultants – Completed 10 April 2019.

Community Engagement

The project's Community and Stakeholder Engagement Plan (CESP) for the LSPS contains five stages:

- Stage 1 - Informing the community.
- Stage 2 - Development of the draft 'Towards 2040'.
- Stage 3 - Testing of the draft 'Towards 2040'.
- Stage 4 - Exhibition of draft 'Towards 2040.'
- Stage 5 - Adoption of final 'Towards 2040'.

This report addresses the three stages undertaken to date; Stages 1, 2 and 3. Stages 4 and 5 are yet to commence.

Community engagement activities for stages 1, 2 and 3 undertaken to date:

- Your Say page established – 16 January 2019.
- Perceptions Survey – 16 January 2019.
- SRG Workshop – 18 February 2019.
- Community Focus Groups (7) – 18 to 28 March 2019.
- Draft Priorities Survey – 16 April 2019 to 29 April 2019.
- Qualitative analysis of relevant engagement report (2016-2019) - Underway.

Engagement data to date:

- Registrations of Interest – 401 registrations.
- Perceptions Survey – 158 responses..
- Draft Priorities Survey – Underway at time of preparing this report.
- Combined Facebook reach – approx. 60,246 people.
- Webinar views – 787 views.
- Combined video views – 13,477 views.

Upcoming engagement activities:

- Q&A Videos with Council staff and NSW Department of Planning.
- Exhibition of draft 'Towards 2040' (with Housing Discussion Paper) – mid to late 2019.
- Adoption of final 'Towards 2040' – late 2019 (must be adopted by 1 December 2019).

Draft 'Towards 2040' Priorities

As a result of community engagement, extensive internal engagement, in-depth research and initial findings from the technical studies currently underway, draft priorities for 'Towards 2040' have been developed (Attachment 1).

The priorities are consistent with the Greater Sydney Metropolitan Region Plan, the North District Plan and the Northern Beaches Community Strategic Plan and will form a key part of the document that will be exhibited for public comment later in the year.

The priorities were publically available for comment via a public online survey from 16 April to 29 April. All SRG members were invited to participate and to share with the wider community.

Next Steps for 'Towards 2040'

- Analysis of Draft Priorities Survey results – Late April to May 2019.
- Finalisation of Draft 'Towards 2040' – April to June 2019.
- Reporting of Draft 'Towards 2040' and Housing Discussion Paper to Council – mid 2019.
- Public exhibition of Draft 'Towards 2040' and Housing Discussion Paper – mid to late 2019.
- Analysis & implementation of submissions – late 2019.
- Report final 'Towards 2040' to Council – November 2019.
- Adoption of 'Towards 2040' – before 1 December 2019.

Council encourages the SRG members continued involvement in this project.

RECOMMENDATION OF PLANNER

That the Places for People Strategic Reference Group note the update provided.

**1. Infrastructure delivered together with jobs and housing growth**

This priority seeks to provide new and upgraded infrastructure while also locating and sequencing new development in areas supported by infrastructure (e.g. transport infrastructure, community facilities, utilities, communications) for a strong and sustainable Northern Beaches community.

2. Strong partnerships with state agencies, councils, the community and other stakeholders to achieve better outcomes for the community

This priority seeks to establish and maintain collaborative relationships across all levels of government, as well as with our community and stakeholders to deliver long term sustainable outcomes.

3. World class education facilities, including a university campus

This priority focuses on the establishment of a university campus in one of our main centres, to fill the gap of local higher education opportunities, especially for our younger people

4. Community services and facilities that meet our changing needs

This priority is about planning for the right kinds of services such as libraries, community centres, childcare, education opportunities, recreation facilities, healthcare and so on that are critical for our resident's quality of life. This includes establishment of hubs (e.g. co-locating community services and facilities) in our main centres.

5. An inclusive, healthy, safe and socially connected community

This priority is about supporting opportunities for healthy and happy communities that inspire social interaction, resilience and inclusion.

6. Genuine engagement and co-operation with the Aboriginal Community

This priority seeks to meaningfully empower the Aboriginal community in the future of the Northern Beaches.

7. A strong artistic, creative and innovative culture

This priority supports the contribution of arts and creativity to social cohesion, reduce social exclusion and isolation, community safety and our economy.

8. A diverse range of high quality, well designed housing

This priority is about planning for housing supply and choice in the most suitable locations to make the area a more affordable and liveable place for current and future residents.

9. Increased social and affordable housing supply

This priority is Councils commitment to making living in rental housing in this area easier and cheaper for all members of the community.

10. A clear direction for the future of Ingleside

This priority is Councils commitment to collaborate with the NSW State Government to resolve the future of the Ingleside Growth Area.

northern
beaches
councilTowards 2040 Draft Priorities
April 2019**11. Well-designed centres and neighbourhoods that reflect our unique local character and lifestyle**

This priority aims to enhance our local centres and neighbourhoods by building on the valued local characteristics, village feel and local lifestyle.

12. Heritage that is protected, conserved and celebrated

This priority focuses on protecting our Aboriginal and European heritage that contributes to the quality of our built and natural environment and the well-being of our community

13. Frequent and efficient east / west public transport to Chatswood and Macquarie Park

This priority is focused on delivering frequent and efficient public transport services between Manly, Brookvale, Dee Why, Frenchs Forest to Chatswood followed by Mona Vale to Macquarie Park with the vision of our community becoming less dependent on their cars, and one day having the option of living without a car.

14. Frequent and efficient north / south public transport to North Sydney, and Sydney CBD including via the Beaches Link Tunnel

This priority is about continuing to improve the b-line service and gaining a more efficient transport network with a fourth road, Beaches Link Tunnel, providing increased travel route options, improved connectivity and reduced travel time to areas outside of the Northern Beaches by public transport.

15. Safe and convenient walking, cycling and local transport networks

This priority aims to make it easier to walk, cycle and catch transport (e.g. local buses, Keoride, Ride Plus) to access our centres and regional public transport network (e.g. B-Line).

16. Repurposing road space to meet our changing needs

This priority is about using our existing roads more efficiently so we can create safer environments, improve amenity and move more people in the limited space we have (e.g. more pedestrianised walkways in centres, dedicated bus lanes or separated cycle ways on key routes).

17. An efficient urban freight network

This priority focuses on ensuring we are equipped for changes such as increased online deliveries and movement of goods and waste to improve the overall amenity and function of our centre.

18. Embraced innovative and emerging technologies

This priority focuses on using technology and opportunities for innovative solutions for issues facing the community, and build more liveable, productive centres and neighbourhoods that have less impact on our environment.

19. Safeguarded future transport corridors for mass transit

This priority aims to identify our future transport needs and ensure we have the space to provide for it.

20. Jobs that match the skills and needs of our community

This priority aims to support meaningful employment that matches the skills and aspirations of our community while also delivering more jobs closer to home thereby reducing the need to commute.

21. French's Forest as a sustainable health and education precinct

This priority supports Frenchs Forest becoming a well-connected, great place to live, socialise, learn and work with a variety of housing and employment options integrated with the area's bushland character. It will be a low carbon precinct, demonstrating best practice in water, waste and energy efficiency.



northern
beaches
council

Towards 2040 Draft Priorities
April 2019

22. Brookvale as a lifestyle and innovation hub

This priority supports Brookvale strategic centre as a mixed use centre that services the Northern Beaches community as a well-connected attractive place to live, work, study and shop

23. Dee Why as a thriving cosmopolitan centre by the sea

This priority will support Dee Why strategic centre as a mixed use centre by the sea supporting the local community. Improvements to Dee Why will support a mix of business, community, civic and residential uses as well as a vibrant night-life

24. Manly as Sydney's premier seaside destination

This priority will support Manly strategic centre as a well-connected cultural, tourist, retail and entertainment precinct that services residents as well as local and international visitors.

25. Mona Vale as a contemporary, urban heart of the north

This priority will support Mona Vale strategic centre as the urban heart of the northern peninsula. Mona Vale will continue support a local, coastal character with a village atmosphere, and service our unique remote communities and coastal villages including Newport, Avalon and Palm Beach

26. Safeguarded industrial and urban services land

This priority will ensure industrial lands are safeguarded with no further loss of industrial or urban services land, and more efficient use of existing industrial and urban services land (urban services e.g. concrete batching, car servicing facilities)

27. Innovative industry clusters

This priority aims to deliver innovative industry clusters that are well supported, connected and leverage off our strengths, especially for tech and start-ups. For example, this could include marine services in Mona Vale or high technology or design companies in Brookvale.

28. A thriving, sustainable tourism economy

This priority supports growth of a strong tourism and visitation economy whilst protecting and maintaining quality of life for the local community

29. A diverse evening and night time economy

This priority aims to improve the range of activities available in the evening or at night time to improve safety and social interaction across all age groups such as markets, galleries, theatres, restaurants and bars.

30. Healthy and valued coast and waterways

This priority aims to ensure our coast and waterways including Pittwater, Middle Harbour and our creeks, wetlands and lagoons, are healthy and resilient; valued and enjoyed by our community. It will ensure our waterways are managed as part of an integrated system; connecting built, natural and cultural elements.

31. Protected and enhanced bushland and biodiversity

This priority aims to protect and enhance our bushland and biodiversity including our local native plants, animals and ecosystems (e.g. by safeguarding areas of core habitat and wildlife corridors).

32. Protected unique scenic and cultural landscapes

This priority aims to identify and protect our unique scenic and cultural landscapes, including views from the public realm (e.g. escarpments, ridgetops, bushland, coastal headlands and beaches, waterways and buildings and skylines of scenic and cultural importance).

northern
beaches
councilTowards 2040 Draft Priorities
April 2019**33. Protected rural and remote communities**

This priority recognises our rural areas for their contribution to habitat and biodiversity; ability to support productive agriculture; provide resources, and sustain local villages (e.g. Terry Hills, Duffys Forest, Oxford Falls Valley). It also recognises the need to protect our unique remote communities surrounded by National Park (Cottage Point), some of which can only be reached by foot or by boat (Scotland Island, Great Mackerel Beach, Coasters Retreat, Morning Bay, Elvina Bay).

For these areas, we want to protect their unique environmental values, avoid housing growth and ensure they have access to services and sustainable infrastructure.

34. Greener, more resilient urban environments

This priority focuses on designing our community around nature and minimising the impact of human habitation on our environment, as well as building resilience to the urban heat island effect (e.g. improving connections to green spaces, increasing the urban tree canopy cover and integrating water features in public spaces).

35. A range of high quality open space for recreation

This priority aims for the Northern Beaches to contain a diversity of open space for recreation and amenity that meets the demand of new and growing communities.

36. A low carbon, water wise Council and community

This priority outlines Council's intent to be a best practice leader by lowering our own corporate environmental footprint and lead our community to do the same (e.g. smarter council buildings, efficient lighting and partnerships to improve uptakes of sustainable living choices, promoting renewable energy and net zero buildings, reducing our drinking water use, reducing transport carbon emissions).

37. A sustainable built environment

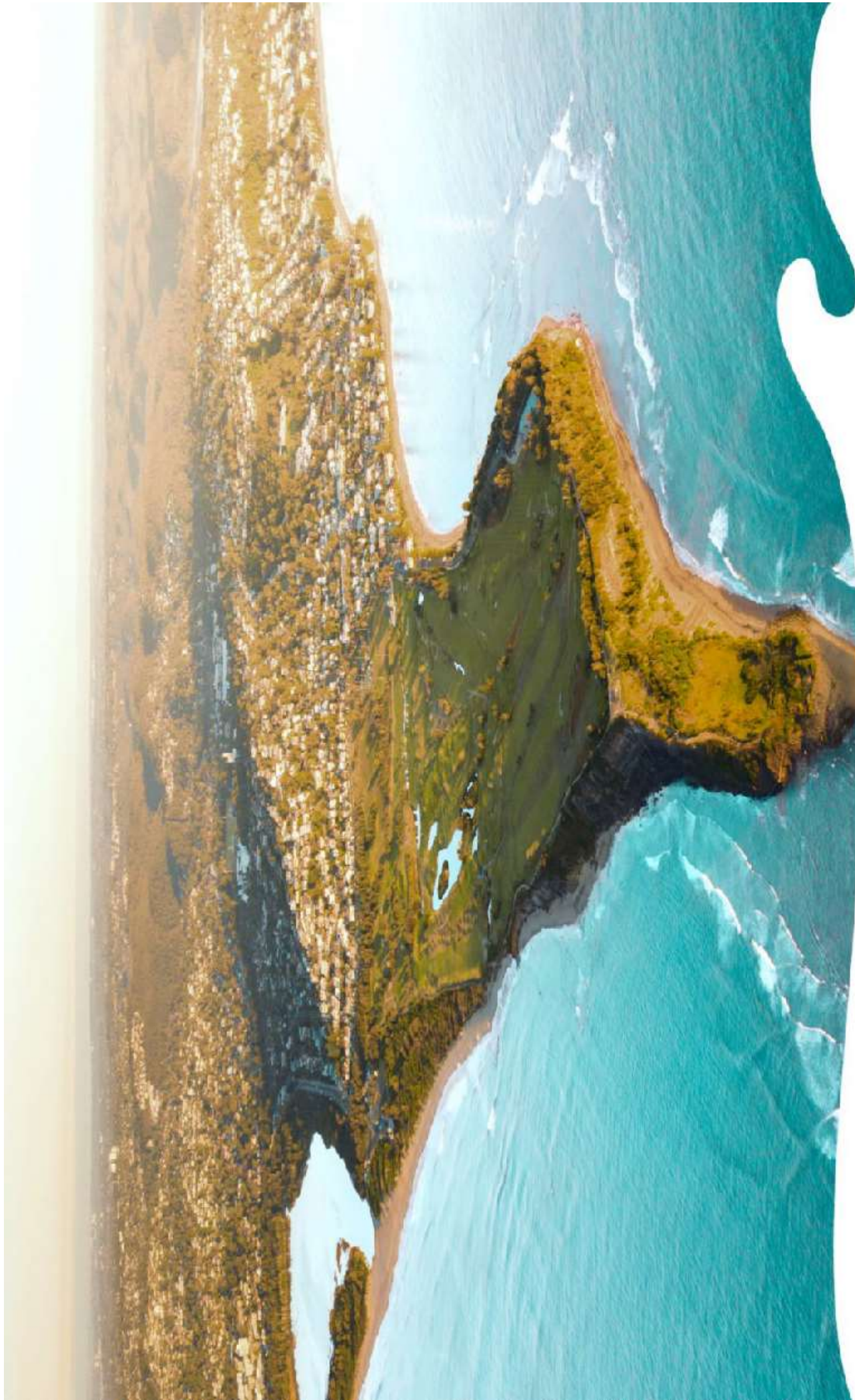
This priority aims to ensure future buildings and infrastructure on the Northern Beaches are water and energy efficient (e.g. solar panels, water recycling).

38. Low plastic consumption and waste

This priority aims to ensure efficient management of our waste (e.g. diverting waste from landfill, increasing recycling of construction waste and reducing litter and single use plastic consumption).

39. A high level of resilience to natural hazards and climate change

This priority aims to ensure our environment and community are resilient to natural hazards and climate change (e.g. educating the community, building resilient infrastructure and minimising the risk to life and property from storm events, floods, erosion, landslides, bushfire and impacts of climate change such as increased heat, flood, fire storms and sea level rise and coastal erosion).



Towards 2040

Northern Beaches Local Strategic Planning Statement

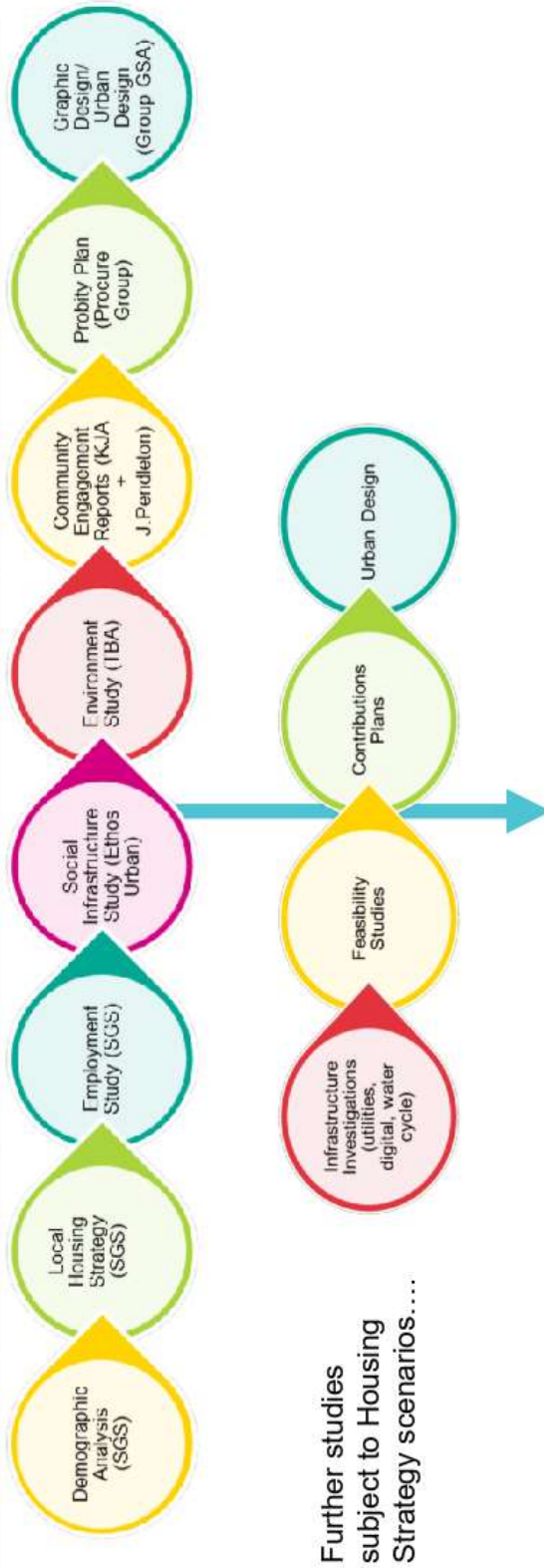


northern
beaches
council



Technical Studies / Scope

Paper	March 2019	May 2019	May 2019	May 2019	IBA	-	-	-
Draft	March 2019	End-2019	Mid-2019	Mid-2019	TBA	-	-	May 2019
Final	April 2019	Early 2020	Oct 2019	Oct 2019	TBA	April 2019	Ongoing	May 2019*



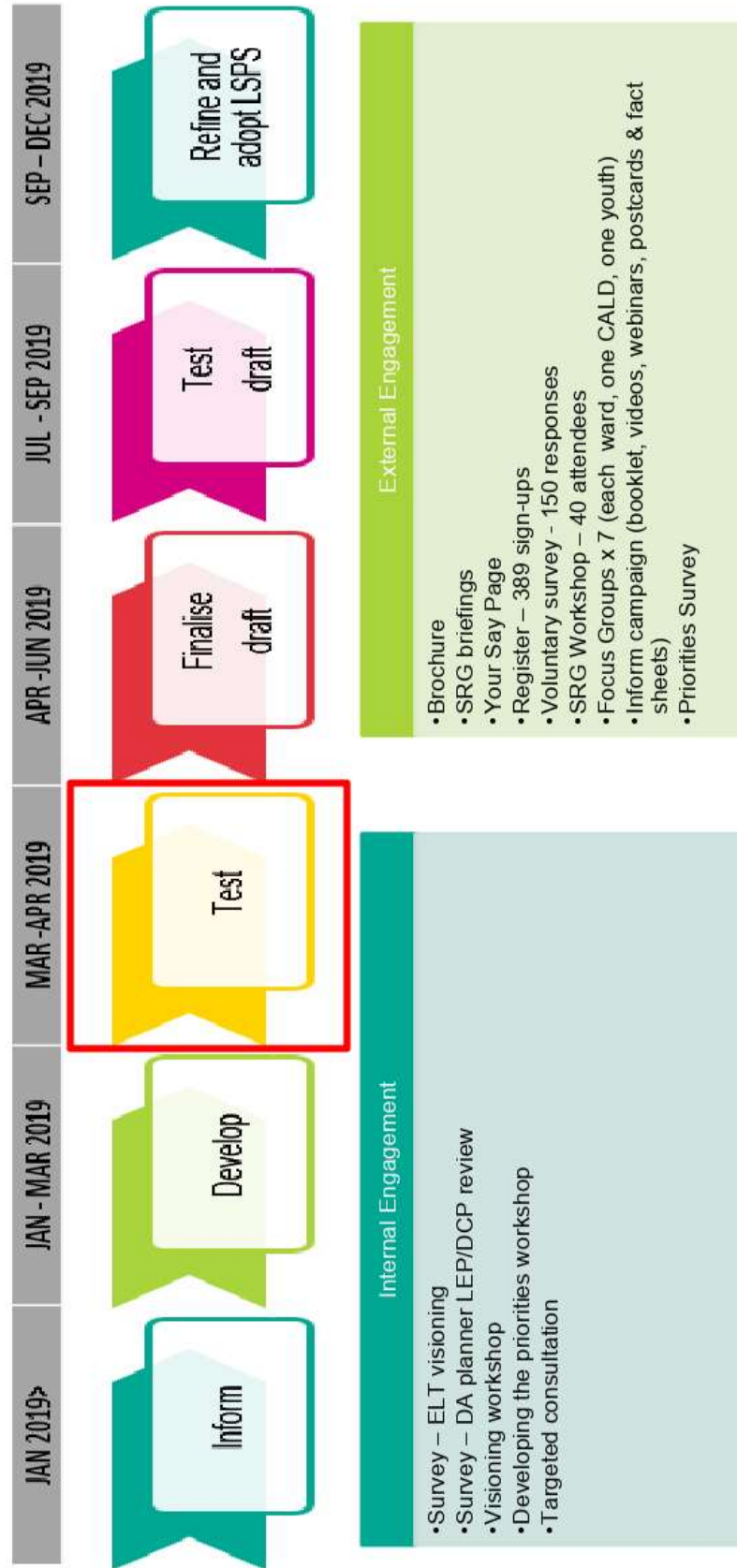


Committed Council Projects

Environment	Transport	Community Services	Property	Strategic and Place Planning
<ul style="list-style-type: none">• Parks and Reserves<ul style="list-style-type: none">• Urban Tree Canopy Plan• Open Space Strategy• Mountain Bike Strategy• Natural Environment<ul style="list-style-type: none">• Environment and Climate Change Strategy• Environment Study• Resilience Framework• Coastal Management Plans• Waste<ul style="list-style-type: none">• Waste Communications Strategy	<ul style="list-style-type: none">• Walking Plan• Bike Plan• Parking Plan• Public Transport Plan• Shared Mobility Policy• Freight Plan• Road Network Plan	<ul style="list-style-type: none">• Community Arts and Culture<ul style="list-style-type: none">• Arts and Creativity Strategy• Community Centres Strategy• Coast Walk Public Art Strategy• Social Plan• Children's Services<ul style="list-style-type: none">• Children's Services Strategy• Library Services<ul style="list-style-type: none">• Library Services Strategy	<ul style="list-style-type: none">• Property Strategy• University Project• Centralised Council Project• Dee Why Property investigations• District Park• Creative Arts Space• Lands Transfer Program	<ul style="list-style-type: none">• Place Making Strategy• Economic Development Plan• Destination Management Plan• Pittwater Waterway Strategy• Frenchs Forest Planned Precinct• Dee Why 7.11• Council 7.12• Place Plans – Avalon, Mona Vale, Manly• Brookvale Structure Plan• Affordable Housing VPA Policy



Engagement Process

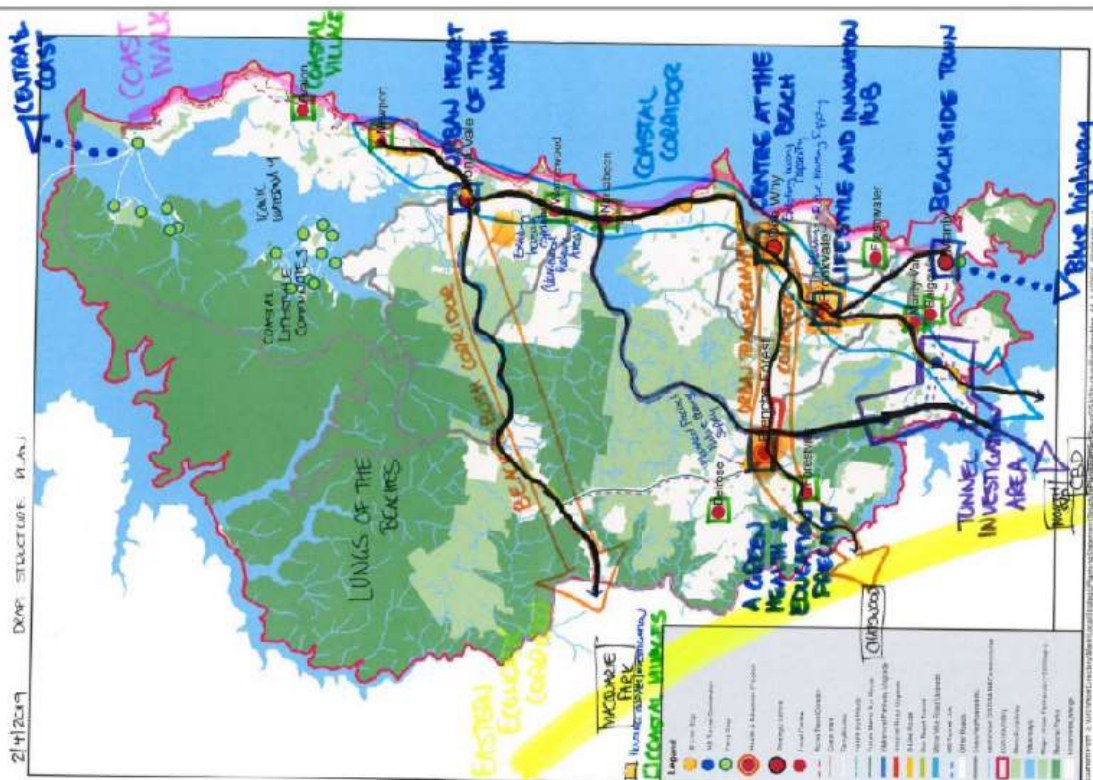




Engagement Findings to Date...

- Be a leader in sustainability
- Support for bolder & stronger environmental priorities
- Support for more active & public transport
- Divergent views on population growth
- Growth cannot outstrip infrastructure
- Support for embracing technology
- Desires for further social cohesion
- Support for co-location of services/facilities, while still supporting local centres
- Support for a mix of housing connecting multiple generations
- Support for adaptable and flexible infrastructure

- Strategic Centres:
 - Frerichs Forest (Health and Education Precinct)
 - Brookvale
 - Dee Why
 - Mona Vale
 - Manly
- Coastal villages (9 local centres)
- Offshore communities
- Corridors
 - Coastal corridor
 - Beach to bush corridor
 - Urban transformation corridor
 - Tunnel investigation area
 - Blue highway
- Unique natural environment



Draft LSPS

Draft Priorities

Infrastructure  +Collaboration	People 	Housing 	Great Places 	Connectivity 	Jobs and Skills 	Landscape 	Efficiency 	Resiliency 
<p>P1 – Infrastructure delivered together with jobs and housing growth</p> <p>P2 – Strong partnerships with state agencies, council, the community and other stakeholders to achieve better outcomes for the community</p>	<p>P3 – World class education facilities, including a university campus</p> <p>P4 – Community services and facilities that meet our changing needs</p> <p>P5 – An inclusive, healthy, safe and socially connected community</p> <p>P6 – Genuine engagement and co-operation with the Aboriginal Community</p> <p>P7 – A strong artistic, creative and innovative culture</p>	<p>P8 – A diverse range of high quality, well designed housing</p> <p>P9 – Increased social and affordable housing supply</p> <p>P10 – A clear direction for the future of Ingleside</p>	<p>P11 – Well designed centres and neighbourhoods that reflect our unique local character and lifestyle</p> <p>P12 – Heritage that is protected, conserved and celebrated</p>	<p>P13 – Frequent and efficient east / west public transport to Chatswood and Macquarie Park</p> <p>P14 – Frequent and efficient north / south public transport to North Sydney, and Sydney CBD including via the Beaches Link Tunnel</p> <p>P15 – Safe and convenient walking, cycling and local transport networks</p> <p>P16 – Repurposed road space to meet our changing needs</p> <p>P17 – An efficient urban freight network</p> <p>P18 – Embraced innovative and emerging technologies</p> <p>P19 – Safeguarded future transport corridors for mass transit</p>	<p>P20 – Jobs that match the skills and needs of our community</p> <p>P21 – Frenchs Forest as a sustainable health and education precinct</p> <p>P22 – Brookvale as a lifestyle and innovation hub</p> <p>P23 – Dee Why as a thriving cosmopolitan centre by the sea</p> <p>P24 – Manly as Sydney's premier seaside destination</p> <p>P25 – Mona Vale as a contemporary, urban heart of the north</p> <p>P26 – Safeguarded industrial and urban services land</p> <p>P27 – Innovative industry clusters</p> <p>P28 – A thriving, sustainable tourism economy</p> <p>P29 – A diverse evening and night-time economy</p>	<p>P30 – Healthy and valued coast and waterways</p> <p>P31 – Protected and enhanced bushland and biodiversity</p> <p>P32 – Protected scenic and cultural landscapes</p> <p>P33 – Protected rural and remote communities</p> <p>P34 – Greener, more resilient urban environments</p> <p>P35 – A range of high quality open space for recreation</p>	<p>P36 – A low carbon, water wise council and community</p> <p>P37 – A sustainable built environment</p> <p>P38 – Low plastic consumption and waste</p>	<p>P39 – A high level of resilience to natural hazards and climate change</p>

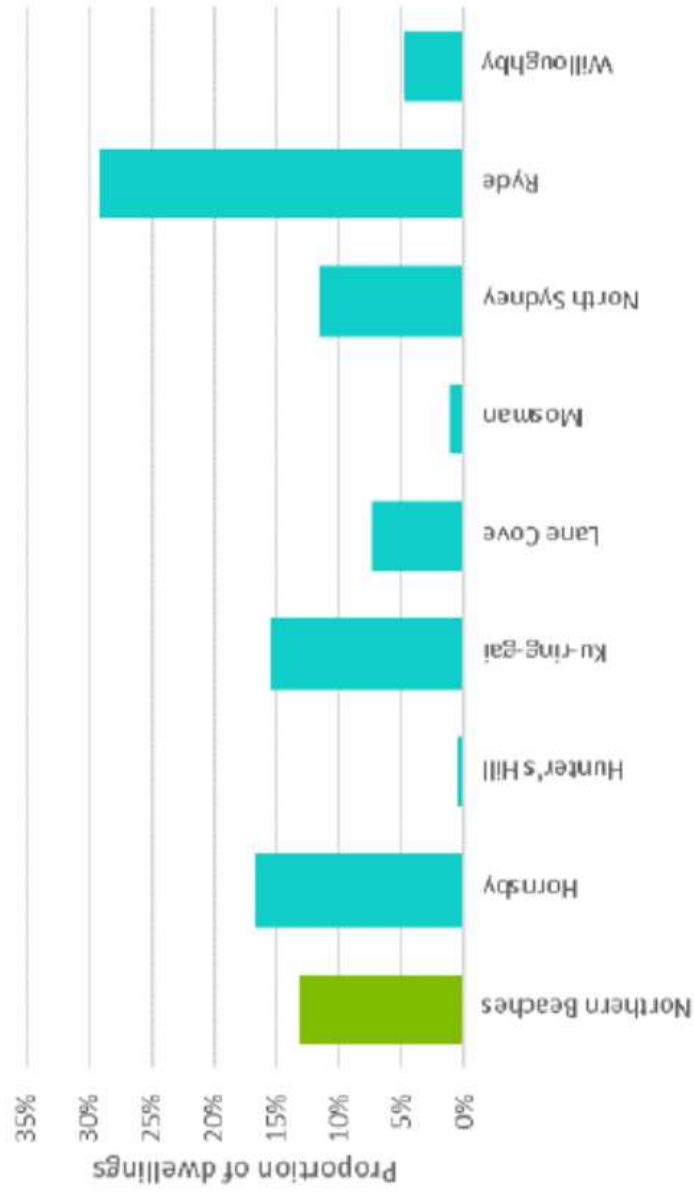
3 Priorities

- Plan for housing supply, choice and affordability in the right locations
- Improve east-west public transport connections between Manly, Brookvale-Dee Why, Frenchs Forest and Chatswood; followed by Mona Vale and Macquarie Park
- Retain and manage industrial and urban services land

Housing

- Plan for housing supply, choice and affordability in the right locations

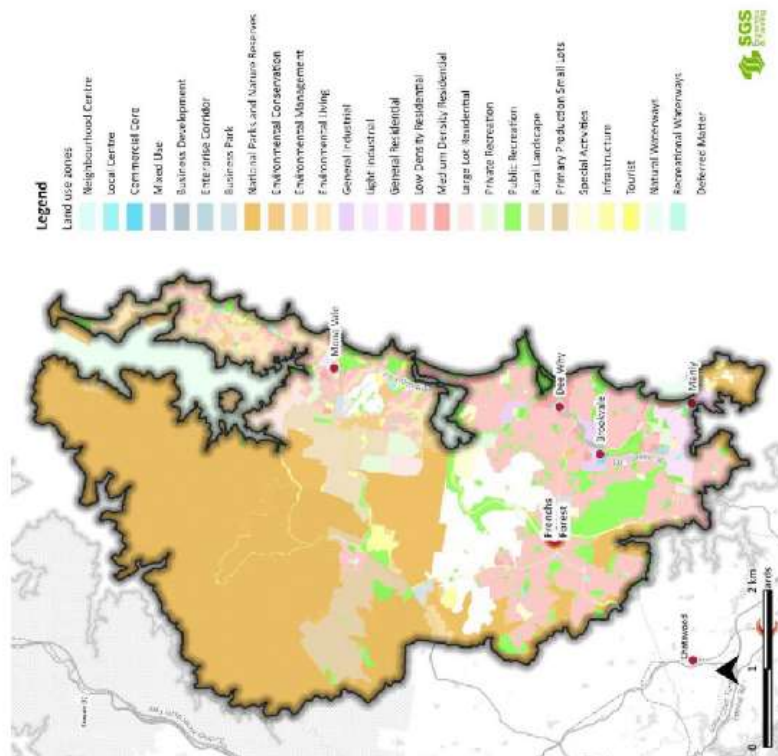
Housing targets



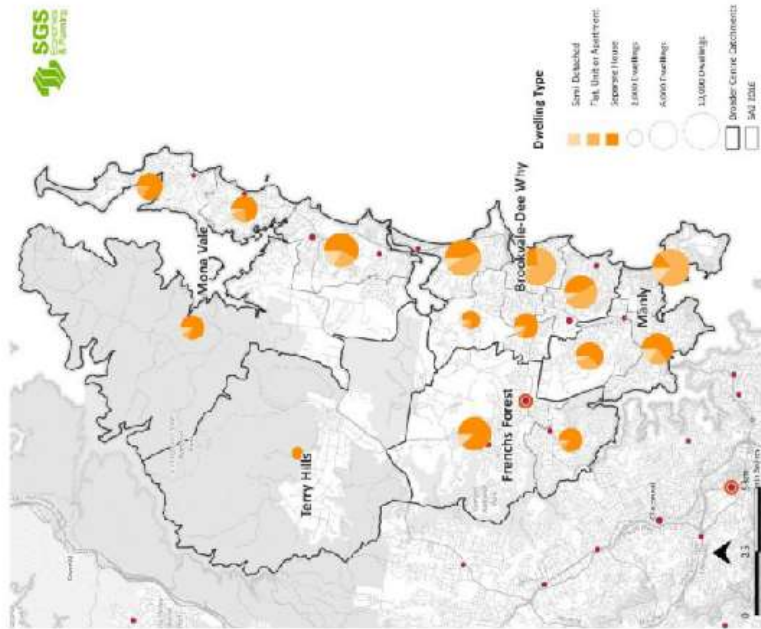
3,400 dwellings (13% of the targets for the North District)

Local Housing Strategy

4 LEPS

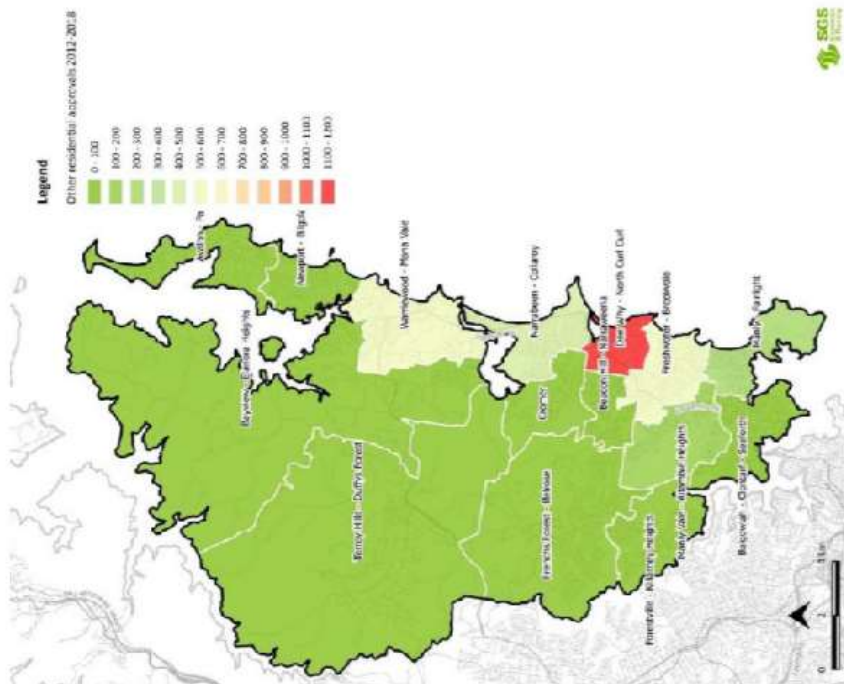


Existing context

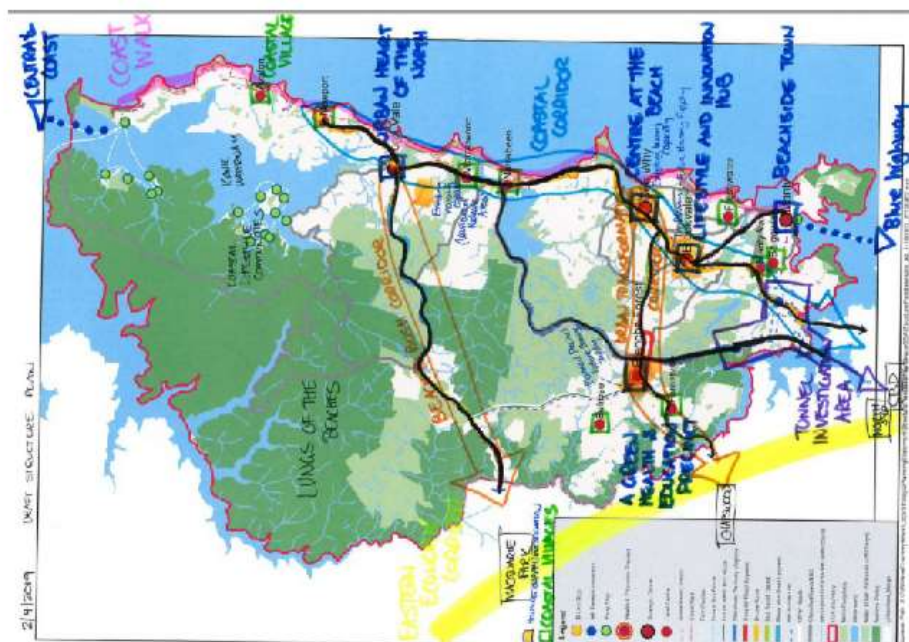


- Couples with children (35%) – projected to have highest growth
- Separate dwellings (50%)
- Higher density areas:
 - Manly
 - Dee Why
- Higher density areas cater for our young and working age adults
- Lower density areas cater for our families but growth of families in apartments
- Housing prices high
- Social housing stock low

multi-unit



Opportunities for growth



- Existing housing capacity (Warriewood & Dee Why)
- In-planning: future housing supply (Brookvale Strategic Centre)
- Planned precinct: future housing supply (Frenchs Forest)
- Possible investigation areas.

Actions

Collaboration:

- Housing polices

Studies:

- Local Housing Strategy
- Local Character Study

Review:

- Draft Brookvale Structure Plan
- Collaboration areas
- Place planning

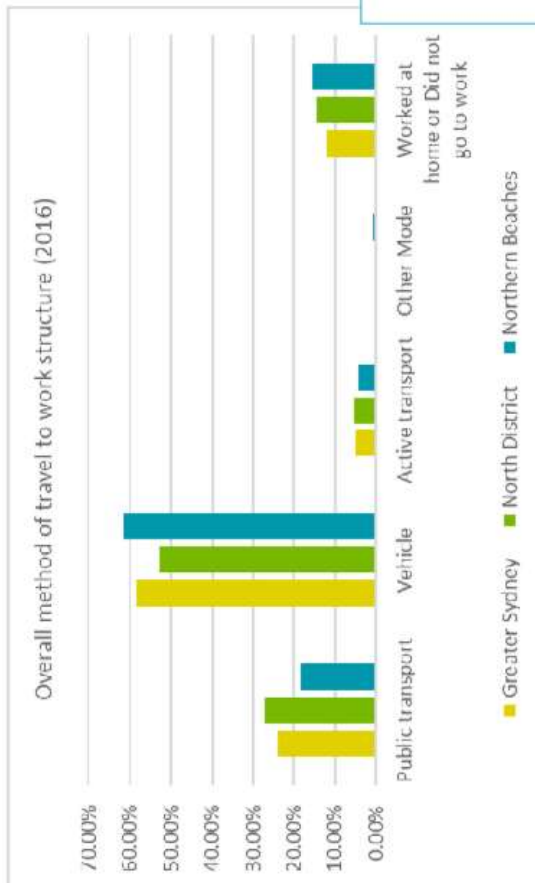
Implement:

- Update LEP & DCP

Connectivity

- Improve east-west public transport connections between Manly, Brookvale-Dee Why, Frenchs Forest and Chatswood; followed by Mona Vale and Macquarie Park

How we move around

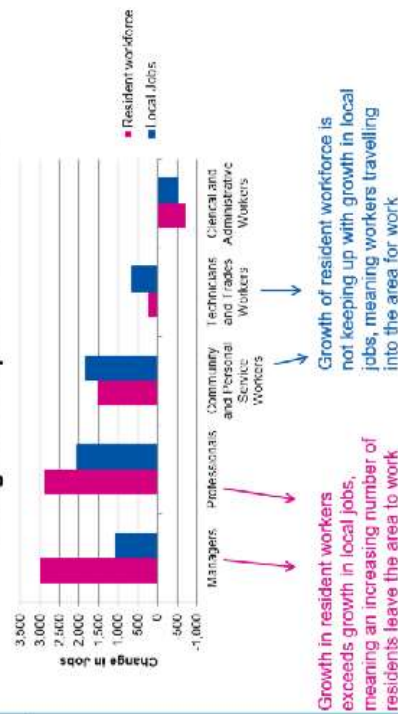


- 60% of residents travel to work by car
- 80% of household trips are by car

- 81.5% of our workers are local residents (4% from Parramatta)
- 55% of our residents work on the beaches (20% in Sydney)

Job Growth by Occupation

Change in Occupations 2011 to 2016

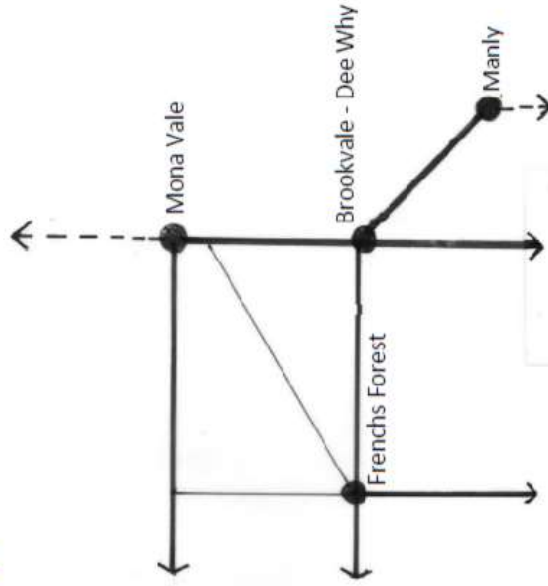
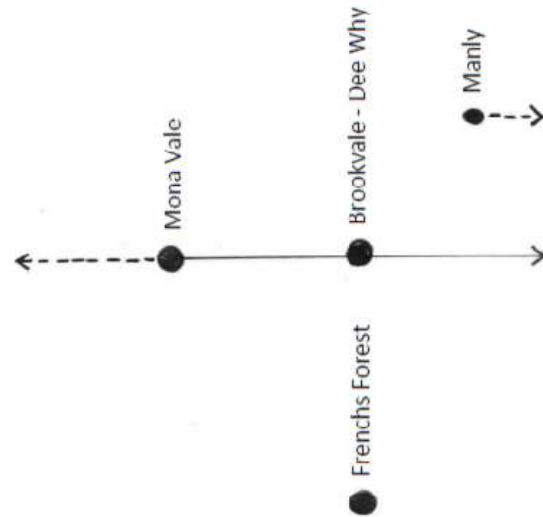


Shaping the beaches

Now

4 roads in and out

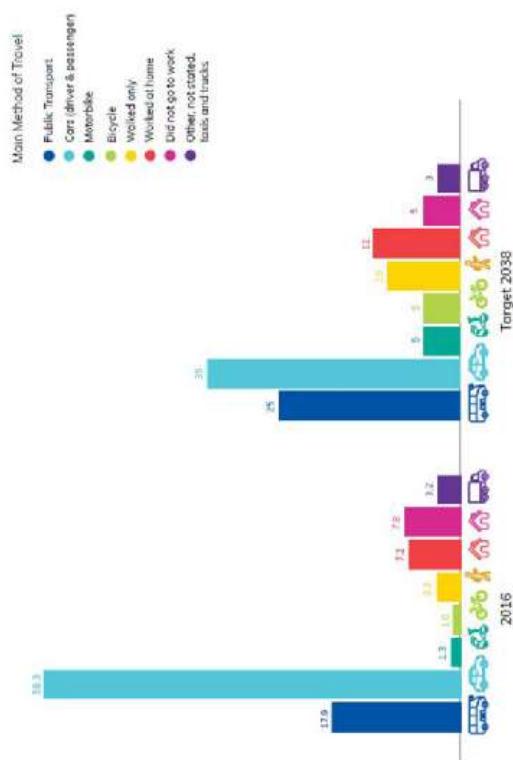
2040



In 2040 our community will have the choice to live without a car

Why is it important?

- Connect to rail network
- Connect to metro centres
- Connect to Eastern Economic Corridor
- Improved access to jobs and labour markets
- Existing density (job and housing)
- Future growth areas
- High functioning strategic centres



Targets in MOVE:

- 30% reduction in trips by car
- a quarter of trips by public transport

[illegible]

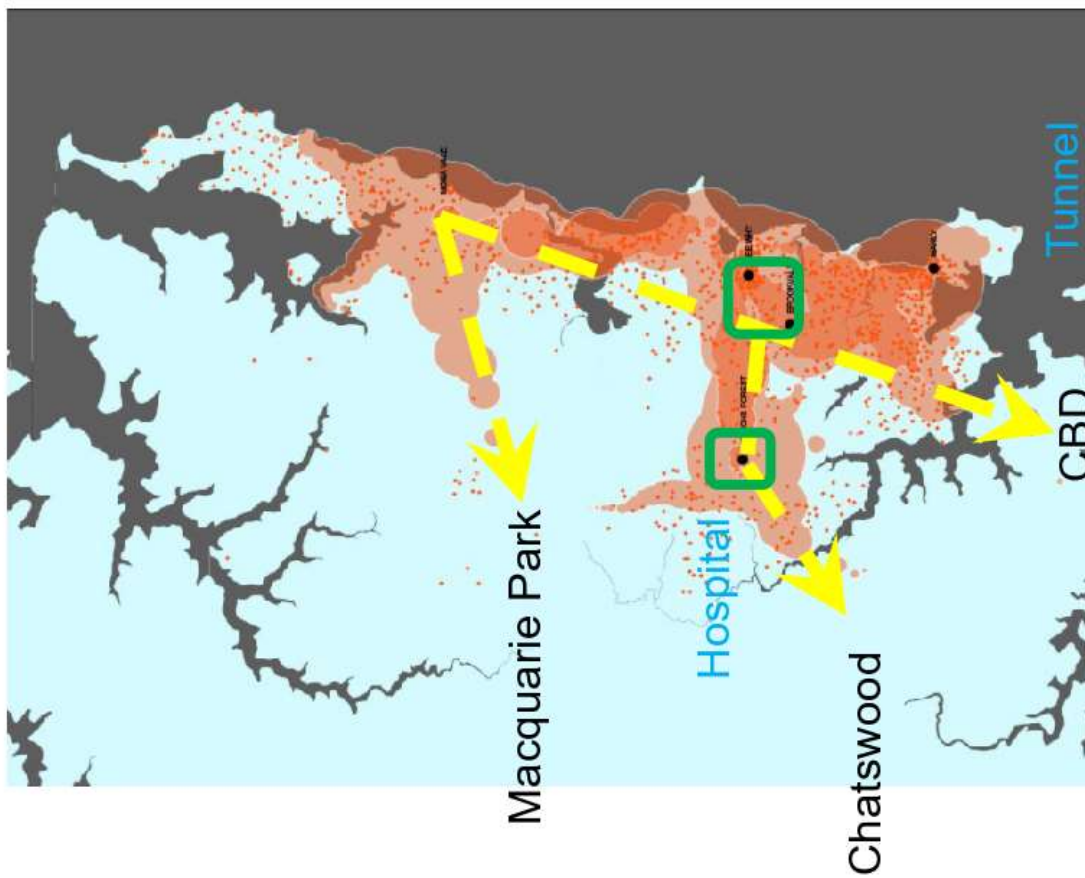
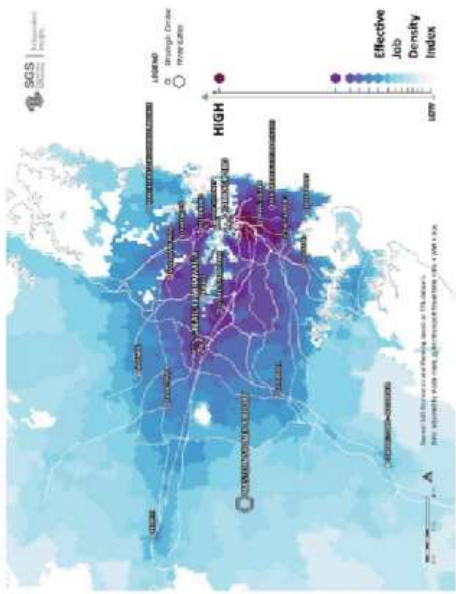
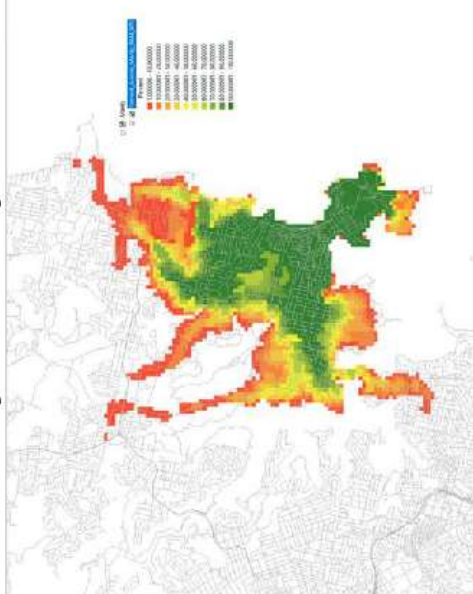


FIGURE 5: EFFECTIVE JOB DENSITY



Source: SGS Economic and Planning, 2013

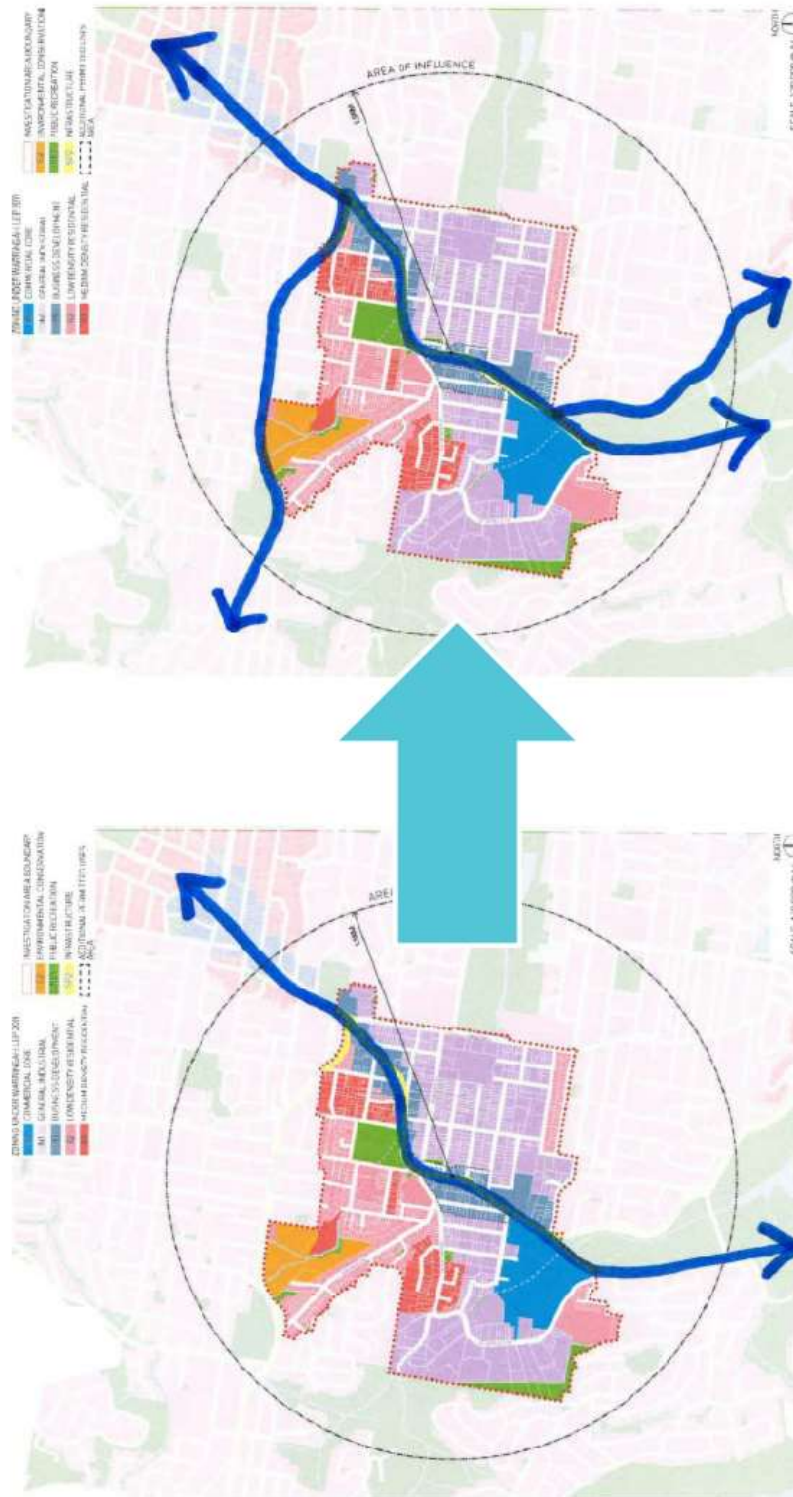
Effective job density



1min intervals – 30min catchment

Strengthening our strategic centres

More than one travel route



Looking at ways to extend our network



Hop skip and jump map



On-demand map - north



On-demand map - Manly

Actions

Collaboration:

- Strengthen corridors
- Align priorities
- Frenchs Forest

Review:

- Collaboration areas
- Place planning
- Update MOVE

Studies:

- Housing
- Employment
- Social Infrastructure
- Transport

Implement:

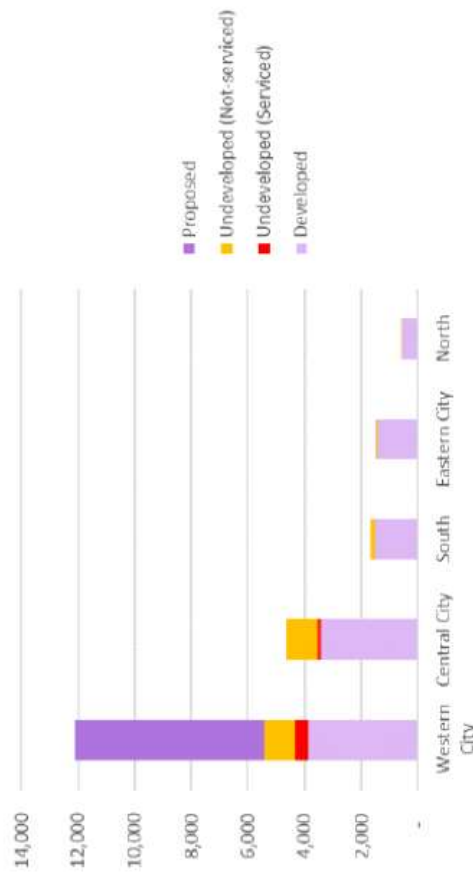
- Public transport plan
- Place plans

- Retain and manage industrial and urban services land

Current land stock and distribution

- North District – lowest amount of industrial land in Greater Sydney
- Northern Beaches includes a large amount (196ha)
- Contribute to our \$16.3 billion economy (6th largest in NSW)

FIGURE 6: SPATIAL DISTRIBUTION OF EMPLOYMENT LANDS AT 2017 (HA)



Source: DPE ELDM 2017 and SGS Economics and Planning 2018



Projected employment growth

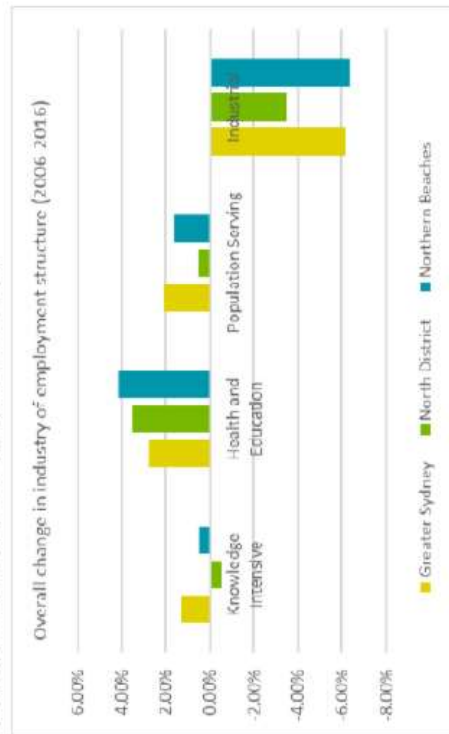
FIGURE 2: NORTHERN BEACHES PROJECTED EMPLOYMENT GROWTH, 2016-2035



Source: SGS Economics and Planning, 2018

- Growth in health and education jobs
- Population serving will remain dominant
- Industrial to decline

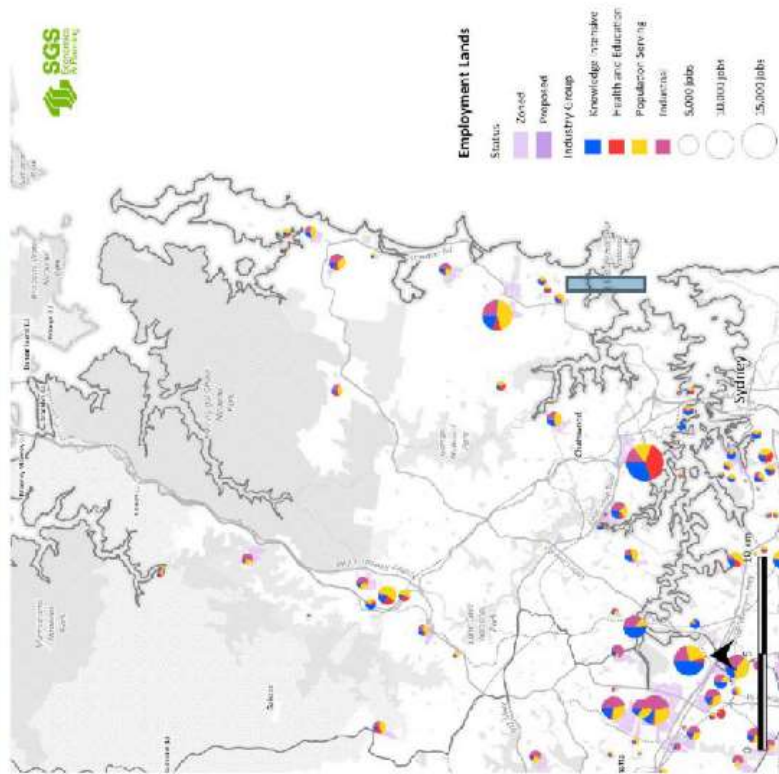
FIGURE 3: CHANGE IN INDUSTRY OF EMPLOYMENT (2006-2016)



Source: ABS Census, SGS Economics and Planning

Types of activities

FIGURE 14: EMPLOYMENT BY INDUSTRY GROUP IN NORTH DISTRICT AT 2016

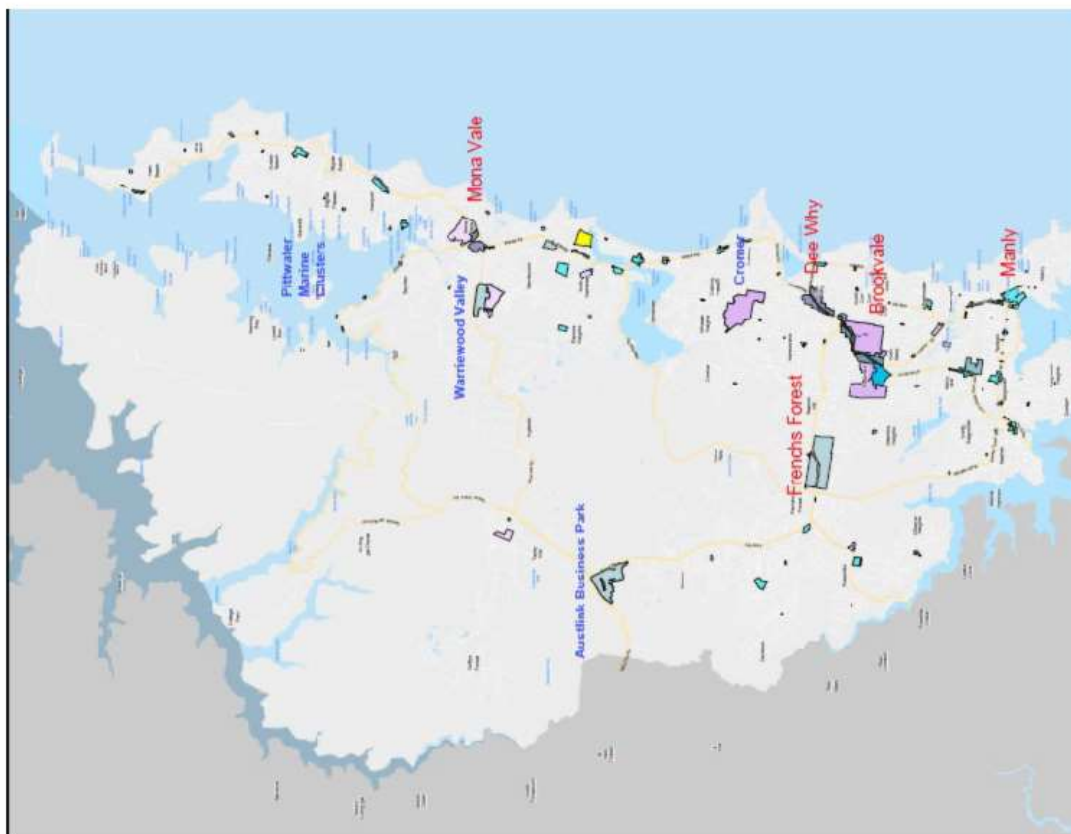


Source: Census 2016 and SGS Economics and Planning 2016

- Significant amount of urban services in our industrial lands
- Mix reflects a local economy without a major commercial centre

Our industrial and urban services land

- 195.7ha
- 15 precincts
- Brookvale is the largest industrial precinct in the North District (Cromer 4th)
- All industrial land is fully developed
- No industrial land in the pipeline
- Low vacancy rates/ strong demand



Brookvale Industrial Precinct



- Rezoning pressures
- High mix of labour intensive uses
- Spill over effect from Warringah Mall
- Role as strategic centre and a mixed use precinct of District importance
- Transition without jeopardising primary function
- Global trends – automation, robotisation, vertical warehousing, last mile delivery

Actions

Studies:

- Employment Study
- Economic Development Plan

Prepare:

- Mona Vale Place Plan

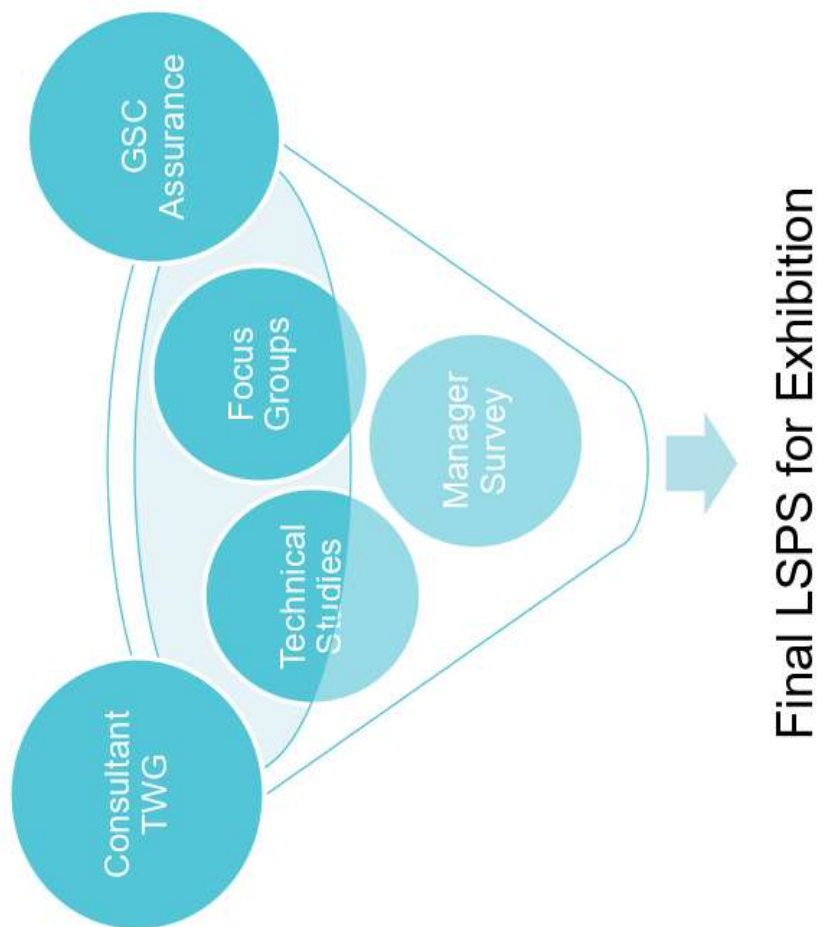
Review:

- Draft Brookvale Structure Plan

Implement:

- Update LEP & DCP

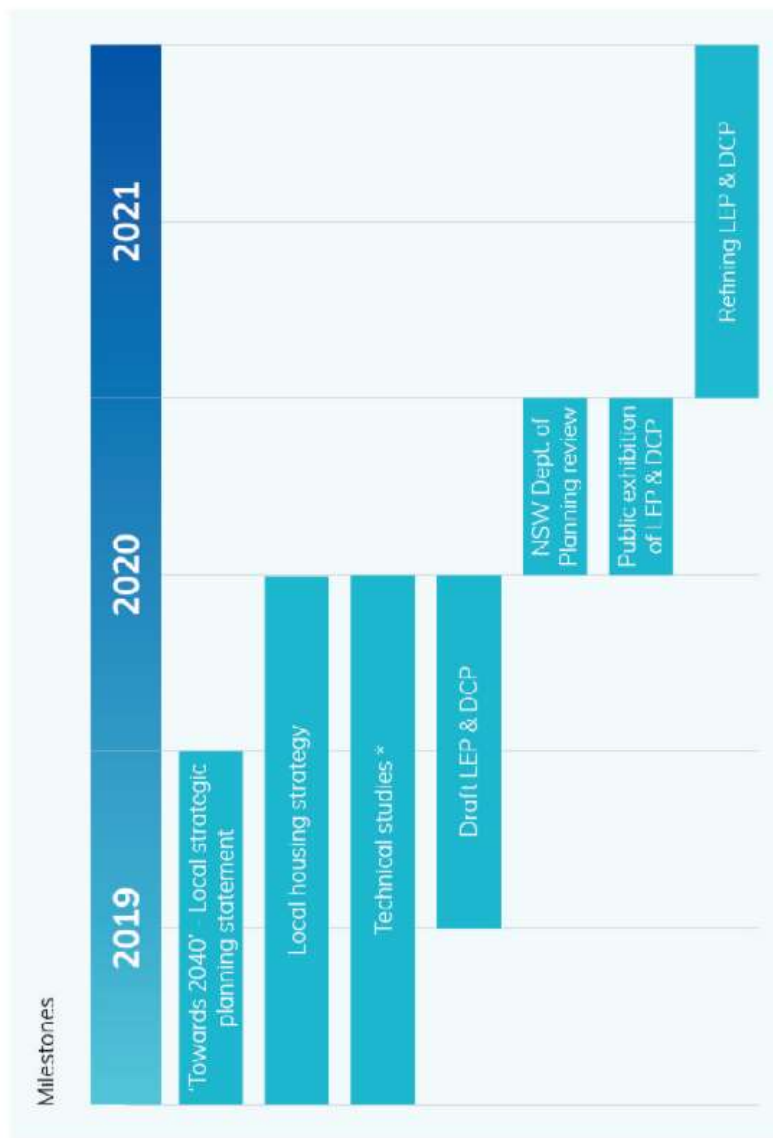
Next Steps – Finalise LSPS





Wrap up

At each and every stage we will look to the community for feedback and ideas.



* A number of technical studies will inform plans (e.g. demographic analysis and employment).

Visit northernbeaches.nsw.gov.au or
email lep@northernbeaches.nsw.gov.au



Thank you

Visit northernbeaches.nsw.gov.au or
email lep@northernbeaches.nsw.gov.au

