



MINUTES

TRANSPORT & TRAVEL STRATEGIC REFERENCE GROUP

held in the Council Chambers, Manly Town Hall on

THURSDAY 21 FEBRUARY 2019

**Minutes of the Transport & Travel
Strategic Reference Group
held on Thursday 21 February 2019
in the Council Chambers, Manly Town Hall
Commencing at 6:10pm**

ATTENDANCE:

Committee Members

Cr Sarah Grattan (Chair)	
Mayor Michael Regan	
(left 7:30) at	
Cr Kylie Ferguson	
Emma Tonkin	
Keith Povah	
Richard Saunders	Manly Warringah Cycling Club
John Hawkins	Bicycle NSW
Victor Konijn	
Craig Smith	
Fiona Christianson	Transport for NSW
Susan Watson	Easylink

Visitors

Glenn Moore	Newport Residents Association
-------------	-------------------------------

Council Officer Contacts

Craig Sawyer	Executive Manager Transport & Civil Infrastructure
Phillip Devon	Manager, Transport Network
Phillip Gray	Active Travel Officer
Michelle Carter	Active Travel Officer
Tamara Lukic	Governance Officer

1.0 WELCOMES AND APOLOGIES

Cr Grattan introduced two new members, Susan Watson from Easylink and Fiona Christiansen from Transport for NSW.

Apologies were received from Cr Amon Andrew Chivers, Wendy Dunnet, and Graeme Laughton.

2.0 DECLARATION OF PECUNIARY AND CONFLICTS OF INTEREST

There were no declarations of pecuniary or non-pecuniary conflicts of interest.

3.0 CONFIRMATION OF MINUTES OF PREVIOUS MEETINGS

3.1 MINUTES OF TRANSPORT & TRAVEL STRATEGIC REFERENCE GROUP MEETING HELD 6 DECEMBER 2018

K Povah / Cr Regan

Minutes of the Transport & Travel Strategic Reference Group meeting held 6 December 2018 are hereby confirmed as a true and correct record of the proceedings of that meeting.

4.0 AGENDA ITEMS

4.1 UPDATE ON THE PARKING DISCUSSION PAPER

DISCUSSION

M Carter provided an update of the parking plan and conducted a workshop seeking the group share their thoughts and suggestions to assist the Transport Network Team to finalise the draft parking plan. A copy of the presentation provided to the group is at Attachment 1.

The group discussed the following:

- A need for a parking plan
- Parking Principles
- Introduction of digital method and its' pros and cons
- Consideration for those who do not use digitalised
- Consideration for people with disability stickers
- How to address the issue of Northern Beaches Parking Permits availability
- Northern Beaches Parking Permits in Commercial Areas
- Further explore the satellite parking areas, Uber – Ride Share
- Follow on the Avalon Plan – Study and use Maroochydore example.

ACTION

That the Transport Network Team:

- A. Start the Community engagement in April on how to better manage parking issues.
- B. Come back to the group on 23 May 2019 and report back on engagement results.

4.2 UPDATE ON BIKE PLAN

DISCUSSION

P Gray provided an update on this item and shared with the group examples of new bicycle infrastructure in Sydney including new bike paths, improvements to signage, bike crossings, bike parking and repair stands. A copy of the presentation provided to the group is at Attachment 2.

This provided for a dynamic conversation and the group discussed the following:

- Safety in relation to past and present cycling network/shared paths
- The importance of using information from statistics to drive future decisions
- Review and potentially follow some of the European countries in trialling projects, collecting feedback and hard data prior to committing to big and costly projects
- Follow the North Sydney example of shifting the central line to create more space for cyclist riding up the hill
- Potential to install shared path signage on low use foot paths even though they may be less than desirable width. This may encourage more people (especially +50s') to cycle as many people generally don't like riding on the road
- Explore the option of increasing the width of current footpaths to 2m-2.5m rather than building completely/brand new ones
- If better signage on shared footpaths would encourage usage and reduce people's concerned for their safety
- Major themes and issues identified by P Gray.

The group asked if there is going to be some level of prioritisation assigned once the plan is adopted, and P Devon advised that it is the plan to have something similar to the walking plan strategy where the research was extensive prior to making that prioritising process and deciding.

Question was asked if collisions on shared paths was a genuine 'safety concern' or people just not liking them. P Devon noted that this was difficult to determine as minor incidents are generally not reported.

P Gray also informed the group of the Northern Beaches community consultation through 'Your Say' Website and 'Social Pin Point' and noted the general feeling of support from the community.

ACTION

That the Transport and Travel Strategic Reference Group:

- A. Assist in the development of the Bike Plan and safe cycling network by:
 - a. Reviewing the proposed network mapping
 - b. Reviewing the content of the plan document
 - c. And assist in further development of the plan once the initial consultation period closes.
- B. Receive an update on the final draft Bike Plan at the May meeting.

NOTE: Mayor Regan left the meeting at 7:30pm.

SUMMARY OF ACTIONS

ITEM NO.	ACTION	RESPONSIBLE OFFICER	DUE DATE
4.1	Transport Network Team to start the Community engagement in April on better management of parking issues and provide the group with engagement results.	M Carter P Devon	23 May 2019
4.2	Review the proposed cycling network mapping.	SRG members	ongoing
4.2	Review the content of the Bike Plan document.	SRG members	ongoing
4.2	Assist in further development of the plan once the initial consultation period closes.	SRG members	ongoing
4.2	Transport and Travel Strategic Reference Group to receive an update on the final draft Bike Plan.	P Gray	23 May 2019

The meeting concluded at 8:06pm.

This is the final page of the Minutes comprising 22 pages numbered 1 to 22 of the Transport & Travel Strategic Reference Group meeting held on Thursday 21 February 2019 and confirmed on Thursday 23 May 2019

Attachment 1



Traffic & Transport SRG

Parking



What we'll cover

What we'll cover

1. Your parking issue : why/solution
2. Why do we need a parking plan?
3. Parking Principles
4. Northern Beaches Beach Permit
5. Beach parking
6. Commercial area parking

Why do we need a parking plan

- Consistent Northern Beaches approach
- Community requests
- Inform the community
- Lead change in parking management
- Lead technology in the parking space

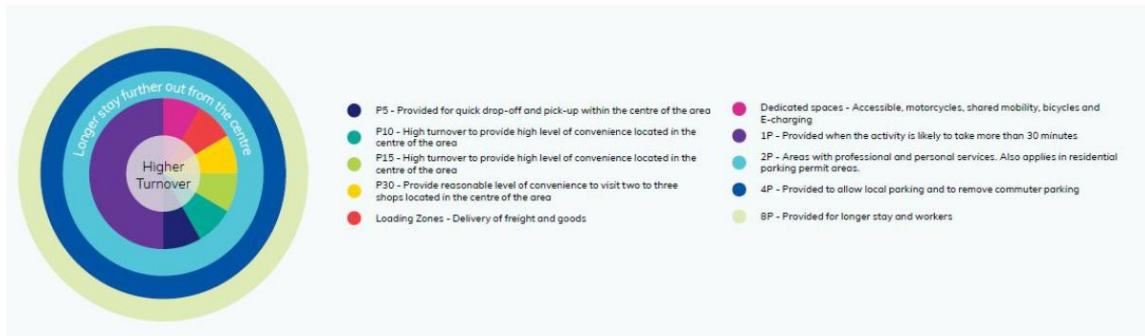
Parking principles (draft)

1. Deliver a shift towards walking, cycling and public transport to reduce private vehicle dependency
2. Support the parking requirements of future Northern Beaches planning and housing strategies to maintain accessible and liveable places for people
3. Provide for shared mobility and electric vehicle charging stations as the first priority in areas of high parking demand
4. Ensure motorcycle, bicycle, micro-mobility and shared mobility parking is provided across the Northern Beaches in areas of need
5. Ensure the pricing of parking is clear, transparent and easy to understand
6. Improve customer service and parking management using technology based real-time data to inform where and when to find the right car park

Parking principles (draft)

7. Provide a range of parking supply to support the economic development of strategic centres, town centres and villages
8. Ensure places for people through creating accessible and liveable places
9. Ensure safety and security to provide safe movement of pedestrians, cyclists, public transport users and general traffic
10. Integrate parking activities with other land uses, the street network, and built form, landscaping and heritage elements
11. Ensure parking is designed and built as adaptable for future use
12. Respond to key directions and actions from the Regional and District Plans
13. Encourage consolidated centralised parking to avoid multiple vehicle crossings

Future parking approach



Next steps

- Review your feedback
- Update draft Parking Plan Discussion Paper
- Final internal stakeholder engagement
- Edit, proofing and design
- Engagement - April

Attachment 2



Northern Beaches Bike Plan

Transport and Travel SRG



Who Are We Providing For?



The Cycling Networks

Safe Cycling Network

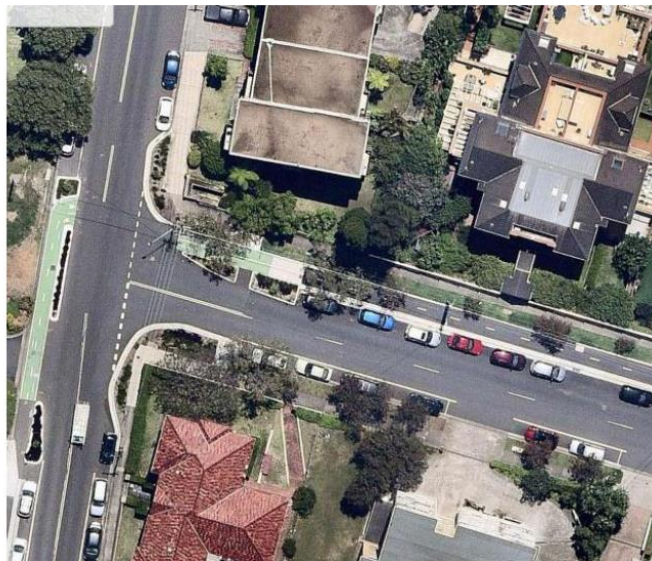
- Safe for Everybody
- Off Road
- Shared Paths
- Separated Cycleways
- Local Streets
- Safe Crossings
- Hierarchy of Routes

Road Cycling Network

- Acknowledge the activity
- Acknowledge where people are riding
- Facilitate these routes
- Make safer where possible for all road users



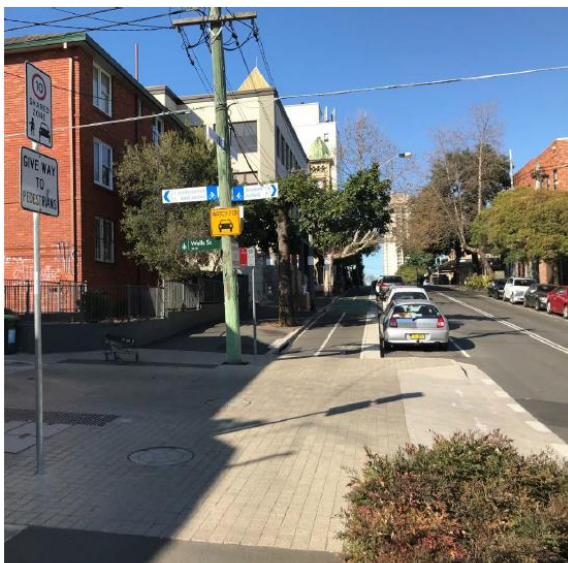
Safe Cycling Network



Safe Cycling Network



Safe Cycling Network



Road Cycling Network



Road Cycling Network



Road Cycling Network



Consultation

- Your Say website
- Social Pin Point mapping
- Social media
- Signage
- Pop ups
- Drop in sessions

Social Pin Point

Project Timeframe

Open for comments from 18 Jan 2019 to 03 Mar 2019 [Change](#)

Stakeholder Engagement Summary

1885

Total Visits

1610

Unique Users

21:18

Avg Time (min)

213

Unique Stakeholders

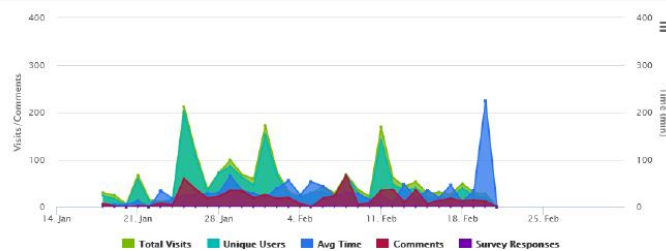
647

Comments

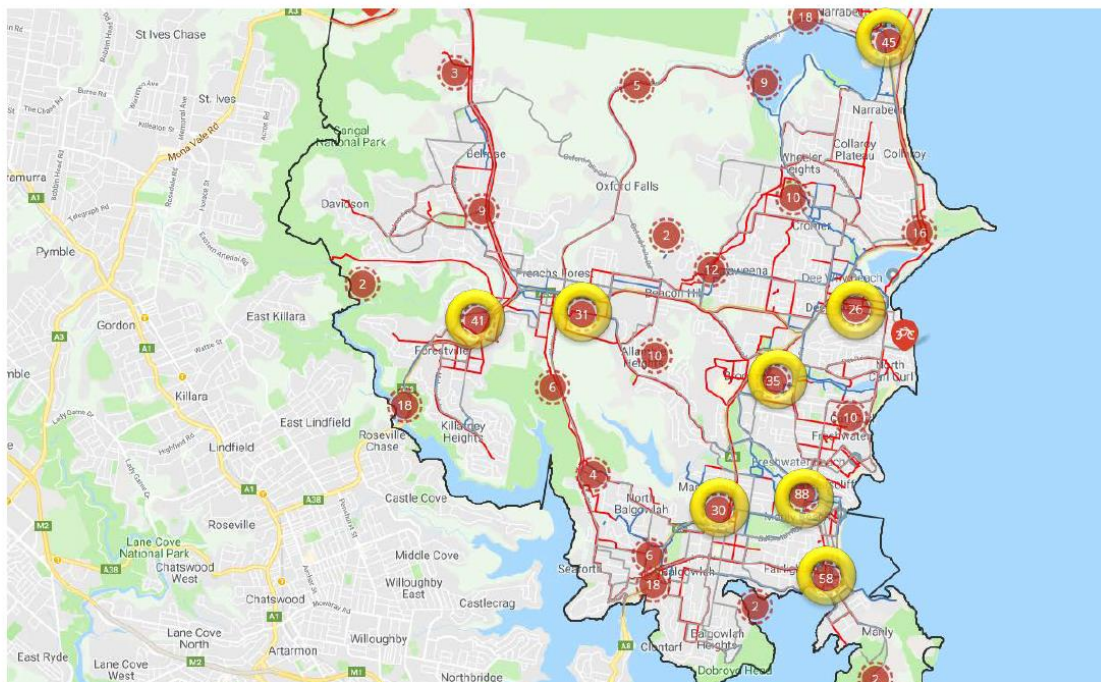
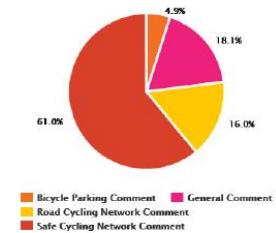
0

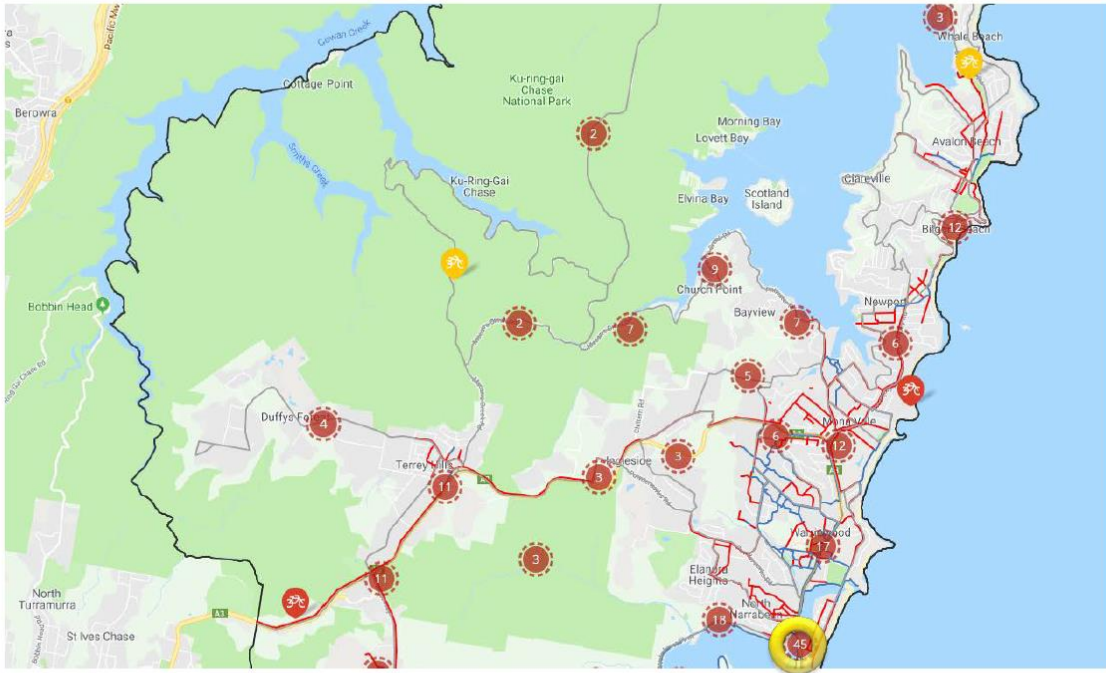
Survey Responses

Stakeholder Engagement by Day



Comment Types





Major Themes & Issues

Shared Paths

- Not Ideal
- Dangerous
- Obstructions
- Pedestrians
- Children/dogs
- Driveways



Major Themes & Issues

Road Crossings

- Dangerous
- Loss of connectivity



Major Themes & Issues

Route to Roseville Bridge

- Existing shared path is terrible
- Should be a major route



Major Themes & Issues

Manly Beachfront

- Path Too Busy
- Dangerous
- Pedestrians/kids
- Cycle Only?
- More Bike Parking



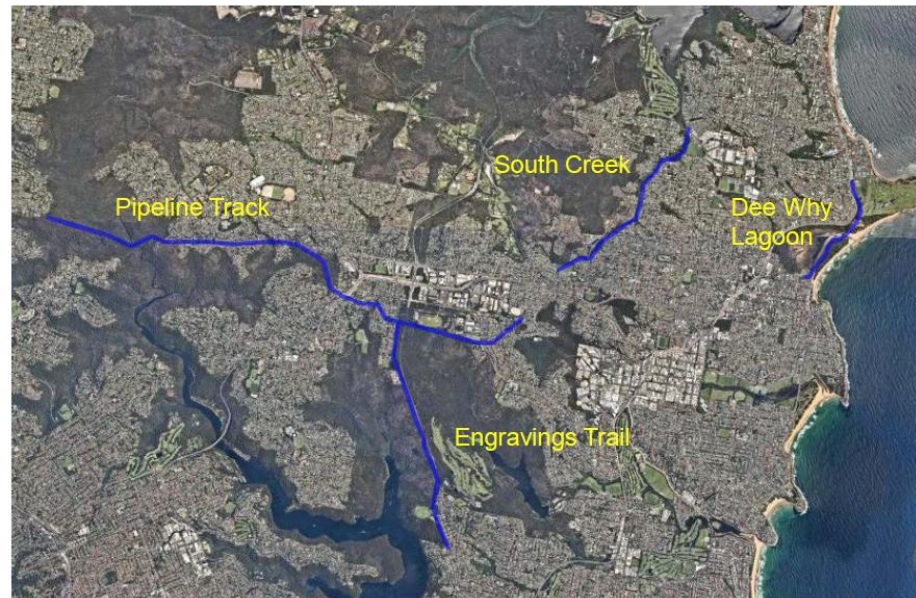
Major Themes & Issues

Manly Creek Bridge



Major Themes & Issues

Major Projects



Major Themes & Issues

Church Point & McCarrs Creek Road



What's Next

- Stage 1 engagement period ends 3 March
- Engagement report
- Develop draft Bike Plan
- April Council Meeting – Draft Plan
- Stage 2 engagement
- June Council Meeting – Adoption