

# Composition & Tenure

Members (voting) – tenure 4 year term of Council

- Councillor Julie Hegarty
- Councillor Bob Grace
- John Gordon, independent external and Chair
- Robert Dobbie, independent external

Attendees (non-voting)

- Mark Ferguson, General Manager
- Anthony Robinson, Internal Auditor
- Mark Jones, CFO
- Warwick Lawrence, Manager Administration & Governance
- One of two directors (Steve Evans or Chris Hunt)



## Role & Responsibilities

Risk Management

Control Framework

External Accountability

Legislative Compliance

Internal Audit

External Audit

Responsibilities of Members



# Reporting/Admin



Meets at least four times per year

Internal Audit Performance/Plan

ARC Annual Report to Council

Minutes of meetings to Council

Quorum is majority of members, including at least one independent

Secretariat support by Administration & Governance Business Unit

Members must declare conflicts of interest

Review of ARC Charter

## INTERNAL AUDIT

# Objective



To provide an independent, objective assurance and consulting activity designed to add value and improve an organisation's operations. It helps an organisation accomplish its objectives by bringing a systematic, disciplined approach to evaluate and improve the effectiveness of risk management, control and governance processes

## Role & Authority

- Development of strategic 3 year Internal Audit Plan and an annual plan – risk based
- Conducting reviews in accordance with annual plan, as well as requests from the GM and probity reviews for DA's
- Advisory role, e.g. policy/procedure development, system/process design
- Audit & Risk Committee
- Authorised to have full, free and unrestricted access to all functions, property, personnel, records etc – observe the need for confidentiality in use of info



# Objectivity, Independence & Status

- Objectivity requires unbiased mental attitude
- Internal Audit has an independent status within Council – report to GM
- Alternate reporting chain to Mayor
- Independent of activities reviewed, i.e. no operating responsibilities outside of IA work and no executive/managerial powers, authorities, functions, duties
- Management staff responsible for risk management and addressing IA recommendations



## Scope of Work

- Examination and evaluation of adequacy and effectiveness of systems of internal control, risk management, governance and the status of ethical behavior
- Assessment of economic and efficient use of resources, e.g. procurement
- Compliance reviews (policy/procedures/plans)
- Special investigations requested by Committee/GM





# IA Methodology



- Internal audits performed in accordance with the IA Manual and IIA Standards
- Includes the following stages:
  - Planning, e.g. background research, risk profile, agreed scope, opening meeting
  - Fieldwork, e.g. walkthrough, risk and control assessment, sample testing of operating effectiveness/compliance
  - Agreement of findings with management
  - Draft report issued to management
  - Final report issued including agreed management actions

## Summary

- The Audit & Risk Committee and Internal Audit function play a significant role in the ongoing good corporate governance of Pittwater Council, and assist with the achievement of objectives through effective risk management

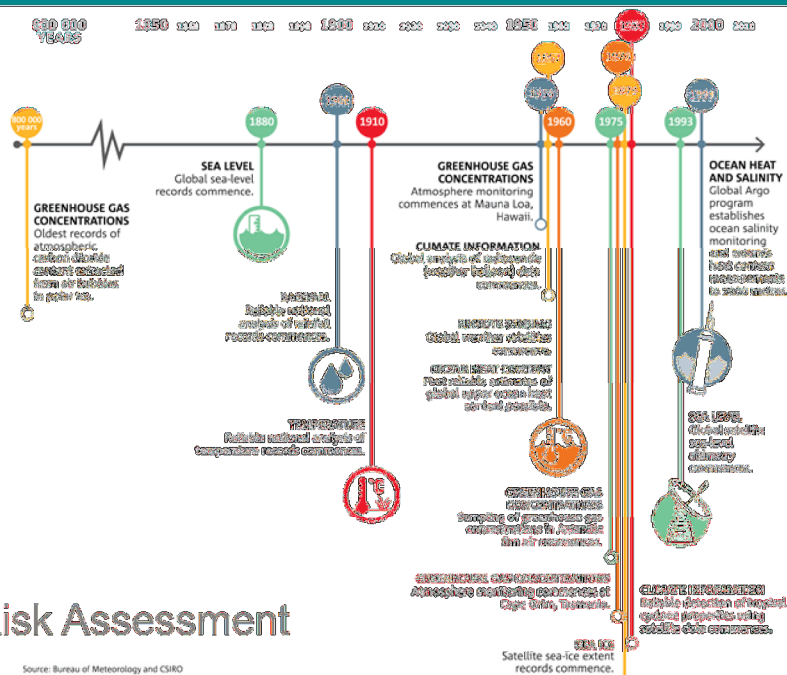


# POLICY No. 176

PRESENTED BY: Melanie Thomas  
26 August 2015

Updated  
Science:

- # Pittwater Council Climate Change Risk Assessment



# Climate Change Policy No. 176

## Background

- Climate Change Policy was first adopted – 6 April 2009
- Climate Change Policy was revised – 2011 & 2013
- Climate Change Risk Assessment - 2012
- Pittwater 2025: Our Community Strategic Plan - 2013
- Enterprise Risk Management Policy No. 198 – 2 Feb. 2015

# Climate Change Policy No. 176

## Revisions Required

- To complement the approaches outlined in the Sustainability Policy No. 164 & Enterprise Risk Management Policy No. 198
- To incorporate a QBL approach – Strategic Plan
- To provide clear definitions of mitigation & adaptation
- To update the Climate Action Plan Framework with the most recent science.

# Climate Change Policy No. 176

## Terminology unclear

- Climate Change Mitigation

Mitigation includes actions to reduce GHG emissions or removing GHG from the atmosphere to limit the changes caused in the global climate by human activities.

# Climate Change Policy No. 176

## Terminology unclear

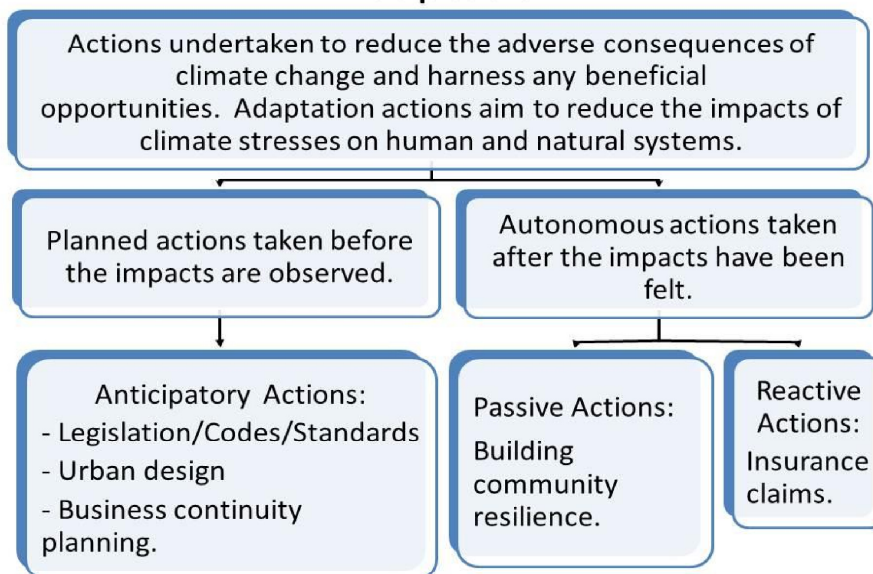
- Climate Change Adaptation

Adaptation refers to the actions undertaken to reduce the adverse consequences of climate change and capture any beneficial opportunities. Adaptation actions aim to reduce the impacts of climate stresses on humans, natural systems and infrastructure.

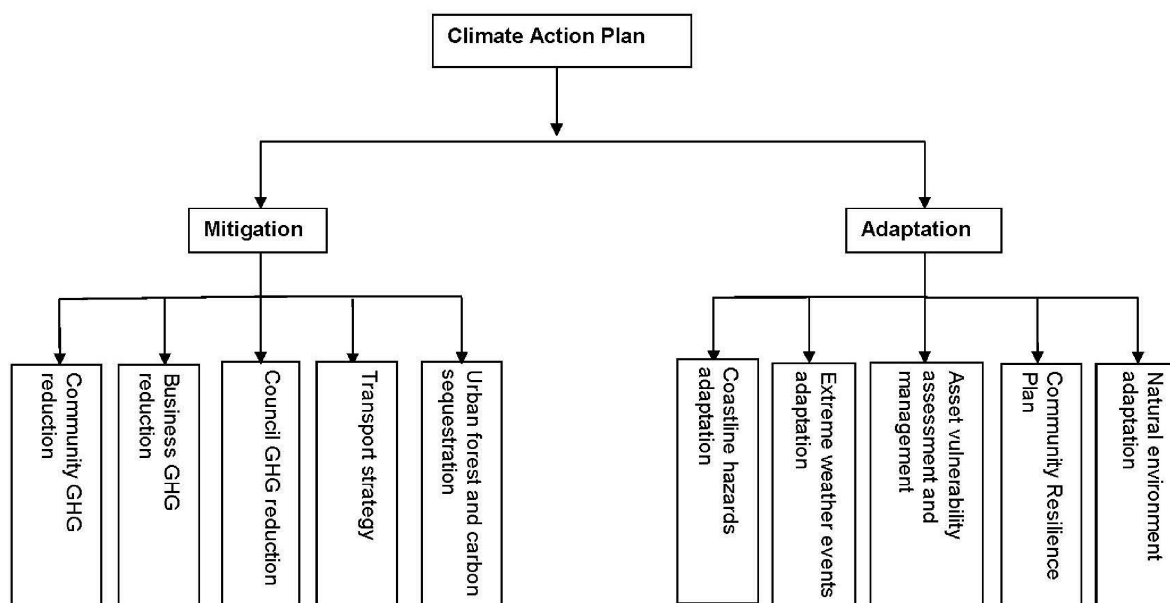
## CLIMATE ACTION PLAN FRAMEWORK

# Climate Change Policy No. 176

### Adaptation



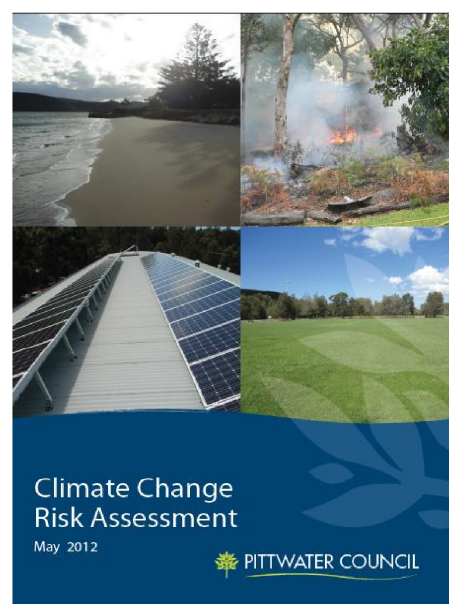
# Climate Action Plan



## Climate Change Adaptation

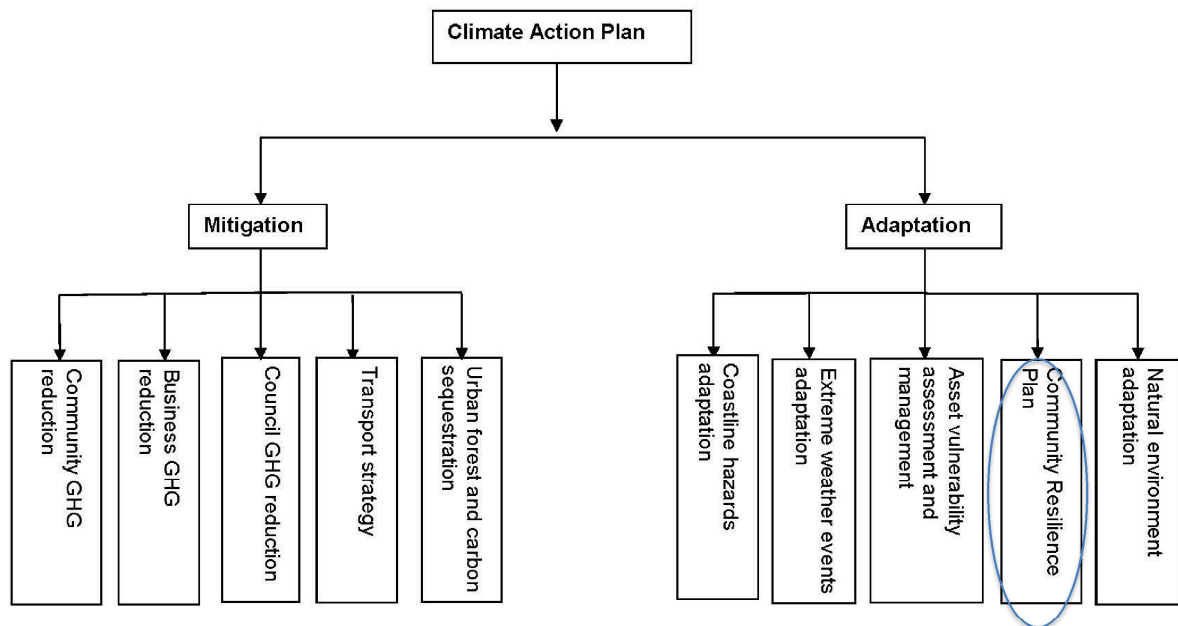
Enterprise Risk Management Framework used to identify controls/actions across council under the following categories:

- Heat/Fire
- Flood
- Sea Level Rise
- Storms.





# Climate Action Plan



## Community Resilience Plan

National Strategy for Disaster Resilience (COAG 2009)

Lists characteristics of a disaster resilient community as:

- Functioning well while under stress
- Successful adaptation
- Self-reliance
- Social capacity.



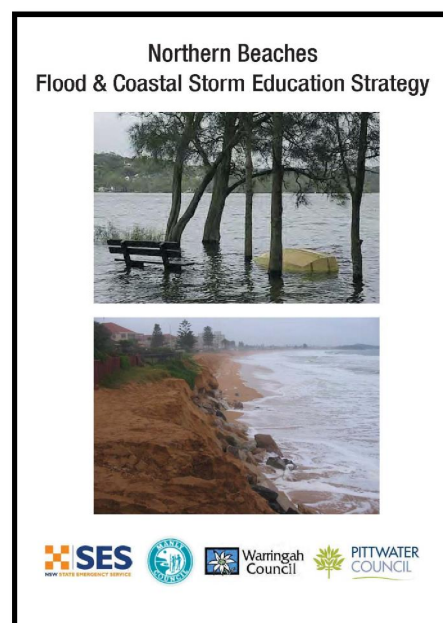


# Community Resilience Actions

## Community Resilience Innovation Program (NSW Government)

Pittwater Council was successful in obtaining a grant of \$25,000 to undertake an all-hazards historic photographic exhibition and workshops:

- Cherry Corr engaged to curate 12 exhibitions
- 3 workshops: working with SES, RFS, Australian Red Cross, Manly Council & Warringah Council.



PITTWATER  
COUNCIL

# Climate Wise Communities

## Ku-ring-gai Council

- Aim is to build resilient communities through all-hazard interactive workshops.
- Training workshop facilitators – 6 Councils selected including Pittwater Council.
- Attended introduction and Aged Care Providers workshop.



PITTWATER  
COUNCIL

# All-hazard community workshops

Draft workshop structure:

1. Pre-workshop questionnaire about resilience.
2. Introduction on community resilience & climate hazards.
3. Overview from RFS, SES & ARC.
4. Mapping activity at a neighbourhood scale for a suburb within an LGA.
5. Scenarios including evacuation route planning & opportunity to gather community resilience information.
6. Write REDiPlan (if time).
7. Post-workshop evaluation.



 **PITTWATER**  
COUNCIL

 **PITTWATER**  
COUNCIL

COMMUNITY RESILIENCE  
ACTIVITY

# Case Study – 2015 April Coastal Storm

## Resilience:

“the ability of a system, community or society exposed to hazards to resist, absorb, accommodate to and recover from the effects of a restoration of its essential basic structures and functions.”

– Sendai Framework for Disaster Risk Reduction 2015-2030 adopted 18 March 2015 (UNISDR 2015).



---

## **Sustainable Towns and Villages Committee**

---

### **12.0 Sustainable Towns and Villages Committee Business**

---



---

<b>C12.1</b>	<b>Minutes of the Sustainable Towns and Villages Reference Group Meeting held on 19 August 2015</b>
--------------	---

**Meeting:** Sustainable Towns & Villages Committee

**Date:** 21 September 2015

---

**COMMUNITY STRATEGIC PLAN STRATEGY:** Corporate Management

**COMMUNITY STRATEGIC PLAN OBJECTIVE:**

- To provide leadership through ethical, accountable and legislative decision-making processes
- To ensure local democratic representation
- To engage proactively with the community in a way that is consistent, appropriate and effective

**DELIVERY PROGRAM ACTION:**

Maintain and Service Council's Range of Committees

---

## **1.0 EXECUTIVE SUMMARY**

### **1.1 SUMMARY**

The 19 August 2015 Meeting considered the following discussion topics:

- Pittwater Waterway Review
  - Member presentation on roadkill and Fauna Connectivity
  - Priorities workshop
  - Bike Plan workshop
- 

## **2.0 RECOMMENDATION**

**1. That Council note the Minutes of the Sustainable Towns and Villages Reference Group Reference Group Meeting held on 20 May 2015 that relate to the discussion.**

**2. That Council note, in particular, the following Reference Points from that meeting:**

### **2.2 Member Presentation on Roadkill and Fauna Connectivity**

- 1. The Reference Group thanked Mr David Palmer, Pittwater Natural Heritage Association for his presentation on this item.**
- 2. That the group supports the creation of a working group to develop a plan for road crossings and fauna corridors across Mona Vale Road and the Ingleside precinct and that RMS be approached as the lead agency.**

### **2.3 Bike Plan Workshop**

- 1 That the verbal update by Ms Michelle Carter, Road Safety Officer on the bike plan and the discussions recorded during the workshop be noted.**
- 2 Members are encouraged to circulate the Bike Plan Survey to their networks.**
- 3 That members be provided with an update at the Sustainable Towns and Villages Reference Group meeting in November.**

---

### **3.0 BACKGROUND**

#### **3.1 PURPOSE**

To present to Council for consideration, the Minutes of Sustainable Towns and Villages Reference Group Meeting held on 19 August 2015 (refer **Attachment 1**).

#### **3.2 BACKGROUND**

The Sustainable Towns and Villages Reference Group was established by Council to consider matters involving goals and initiatives contained in the key direction of Council's Strategic Plan – Integrating Our Built Environment.

The strategic objectives within the associated key direction are:

- Asset Management Coordination Strategy
- Energy Efficiency Strategy
- Land Use & Development Strategy
- Town & Village Strategy
- Transport & Traffic Strategy

To fulfil its role, the Sustainable Towns and Villages Reference Group provides:

- a link between Council and the community which enhances communication about the strategic direction of Council initiatives,
- input from Council and the community (historical, social and environmental) when considering possible solutions,
- consideration of implications from strategic initiatives and their likely impact on the local community; and feedback to Council on behalf of the community.

#### **3.3 POLICY IMPLICATIONS**

Nil

#### **3.4 RELATED LEGISLATION**

Nil

#### **3.5 FINANCIAL ISSUES**

##### **3.5.1 Budget**

Nil

##### **KEY ISSUES**

- Pittwater Waterway Review
- Member presentation on roadkill and Fauna Connectivity
- Priorities workshop
- Bike Plan workshop

---

### **4.0 ATTACHMENTS / TABLED DOCUMENTS**

**Attachment 1** – Minutes of the Sustainable Towns and Villages Reference Group Meeting held on 19 August 2015.

---

## **5.0 SUSTAINABILITY ASSESSMENT**

A sustainability assessment is not required for Minutes of Meetings.

Report prepared by

Steve Evans

**DIRECTOR, ENVIRONMENTAL PLANNING & ASSESSMENT**



# **Minutes**

## **Sustainable Towns and Villages Reference Group**

held in the Training Room at the Coastal Environment Centre, Lake  
Park Road, North Narrabeen on

### **19 August 2015**

Commencing at 4.00pm

**Members of the Committee, namely**

Cr Grace, Chairperson

**And one representative from the following organisations:**

Roslyn Marsh - Avalon Palm Beach Business Chamber Inc  
Ray Mills - Clareville and Bilgola Plateau Residents Association (CABPRA)  
Dick Clarke – Elanora Heights Residents Association  
Marcia Rackham - Mona Vale Residents Association Inc  
Selena Webber - Newport Residents Association  
Merinda Rose - Palm Beach and Whale Beach Association Inc.  
David Palmer - Pittwater Natural Heritage Association  
Jennifer Knox - West Pittwater Community Association  
Sophie Butler - Pittwater Resident Representative  
Dale Cohen - Pittwater Resident Representative  
Billy Bragg - Pittwater Resident Representative  
Steven Koolloos - Pittwater Resident Representative

**and the following Council Advisors**

Andrew Pigott – Manager, Planning and Assessment  
David Bremner – Community Engagement Officer  
Anne-Maree Newbery – Principal Planner (Strategic)  
Philip Adams – Strategic Planner  
Sherryn McPherson - Administration Officer/Minute Secretary

**Sustainable Towns and Villages  
Reference Group Meeting**

**Table of Contents**

<b>Item No.</b>	<b>Item</b>	<b>Page No</b>
<b>1.0</b>	<b>Apologies</b>	
<b>2.0</b>	<b>Declarations of Pecuniary Interest</b>	
<b>3.0</b>	<b>Confirmation of Minutes</b>	
<b>4.0</b>	<b>Discussion Topics</b>	
STV4.1	Pittwater Waterway Review	
STV4.2	Member presentation on roadkill and fauna connectivity	
STV4.3	Priorities workshop	
STV4.4	Bike plan workshop	
<b>5.0</b>	<b>Emerging Business</b>	
<b>6.0</b>	<b>Next Meeting</b>	

---

## **1.0 Apologies**

### **REFERENCE GROUP RECOMMENDATION**

1. Apologies were received from
  - Steve Evans - Director, Environmental Planning & Community
  - Ms Linda Haefeli, Climate Action Pittwater
  - Ms Frances Jones, Scotland Island Residents Association (SIRA)
  - Ms Jacqui Marlow, Friends of Narrabeen Lagoon Catchment Committee

and leave of absence was granted from the Sustainable Towns and Villages Reference Group Meeting held on 19 August 2015.

2. The Reference Group members accepted the apologies.
3. Mr James Owen from Elanora Heights Resident's Association submitted his resignation.
4. Mr Dick Clarke will replace Mr James Owen as delegate for Elanora Heights Resident's Association as approved by the General Manger under the Reference Group Charter.

(Mr Steve Koolloos / Ms Billie Bragg)

---

## **2.0 Declarations of Pecuniary Interest**

Nil.

---

## **3.0 Confirmation of Minutes**

### **REFERENCE GROUP RECOMMENDATION**

That the Minutes of the Sustainable Towns and Villages Reference Group Meeting held on 20 May 2015, be confirmed as a true and accurate record of that meeting.

(Ms Marcia Rackham / Mr Ray Mills)

---

## **4.0 Discussion Topics**

---

---

## STV4.1 Pittwater Waterway Review

### **Proceedings in Brief**

Ms Anne-Maree Newbery, Principal Planner (Strategic) provided a presentation to the Sustainable Towns and Villages Reference Group of the Pittwater Waterway Review (the Review).

A copy of the Pittwater Waterways Review PowerPoint presentation provided to the Reference Group members is attached to the minutes at **Attachment 1**.

### **Discussion Points**

- Q:** What will be classified as the waterway area?
- A:** The waterway area will be defined as the inland waterways of Pittwater which does not extend to the ocean. The boundary will be from Barrenjoey Headland to McCarrs Creek.
- Q:** Will Pittwater Council be working with other stakeholders such as Kur-ring-gai Council and Roads and Maritime Services (RMS) during this process?
- A:** Yes, Council will be working with various agencies during the execution of this process.
- Q:** What is Council jurisdiction in regards to the waterways?
- A:** Council has authority over zoning and locations in which people can build and make alterations to jetties, ramps and pontoons. Council works with RMS in regards to mooring areas. E.g. Placing a cap on moorings and capacity on mooring fields.
- Q:** What Legislation does Council use to manage the waterways?
- A:** Council utilizes their Development Control Plan (DCP) which enables the placement of conditions and controls on infrastructure. E.g. When building a new or upgrading a marina, Council can enforce the upgrade pump out facilities and the inclusion of additional facilities to manage the area effectively.
- Q:** Does Council receive an income for moorings?
- A:** No, Council does not receive an income from moorings. All applications are submitted and managed by RMS.
- Q:** In regards to the planning controls and the creation of the new LEP, residents are concerned about the waterways blanket zoning. What are the new zonings and the reported concerns?
- A:** The new LEP operates under the standard instrument template. The concerns focused on the amendment to 3 waterway zones in the new LEP in comparison to 6 under the old LEP.

It was a concern that council will not have the ability to differentiate the waterways in the same way as in the past and take different approaches to suit different areas. During the creation of the LEP, Council was able to be creative in terms of using those zones and Schedule 1 of the LEP to allow additional permitted uses in certain areas to accommodate for that differentiation. The study was born out of the LEP process in response to residents who asked for bigger marinas, boat owners, expanding areas that offer protection for waterways and wildlife etc. It was at this time Council acknowledged the importance of this issue and initiated the process to review the waterways and to commence an extensive consultation process to develop a plan moving forward into the future taking into consideration resident issues.

The exhibition process will provide an opportunity to review the zones, where and how they are used, review the DCP and how it applies to various uses on and around the foreshore, access and recognition of operations, marinas and moorings, jetty's (public and private) and an understanding what is in the area.

**Q:** What are the zones and who are the stakeholders?

**A:** The zonings are known as W1, W2 and W3. In regards to the stakeholders, this will consist of various state and local government agencies, commercial and private operators.

**Q:** Will public access be reviewed for offshore residents seeking access?

**A:** Yes, that is an important issue and is being reviewed as part of this process.

**Note:**

The group broke up into small groups to brainstorm and discuss the following topics:

- Part 1 – Brainstorm – Issues from residents perspective
- Part 2 – Vision statement – What the residents think the waterway plan should be.

The following was identified from a workshop session from the Sustainable Towns and Villages Reference Group meeting. Some issues have been repeated, but recorded as a potential way of identifying key issues. The findings are from 4 groups and focus on issues, challenges, opportunity and vision for the waterway.

**Issues:**

- Identification of who is responsible for the management of the waterway
- Pollution (pump out facilities), knowing where and what the regulations are
- Public access foreshore areas, walking access, boundary of homeowner and owners of the land
- Ramps
- Heritage preservation of slipways
- Compliance of industries i.e. water quality
- Navigational issues during differing tide conditions
- Protection of industries on the waterway
- Marina extensions, larger vessels blocking views
- Visual impacts
- Edges of waterway – mud flats, sand and rock, understanding their importance and need for protection
- Moorings
- Parking at surrounding foreshore edges (particularly on racing days), Pittwater park, trailer parking
- Crowded mooring areas
- High water mark
- Wealthy landowners blocking foreshore access
- Pollution
- Lack of pump out facilities
- Lack of garbage bins
- Lack of dog waste bag containers
- Piles at Bayview ramp
- Parking
- Lack of dog landing areas
- Trailer and boat parking
- Powered Water Craft (banned)
- Lack of dinghy storage
- Control of commercial enterprise on reserves/ parking

- Kayaks (storage)
- Ongoing stakeholder communication commercial marina issues
- Access for foreshore community
- Protection of marine and foreshore environment
- Identification and protection of heritage assets – water preservation strategy
- Public access to the foreshore and waterway
- Commercial and recreational fishing
- Marina expansion, issues including parking, visual impact, water access and quality
- Balanced commercial activities, retain working nature
- Facilities and access for off the beach small boat sailing
- Boat storage
- RMS mooring limits
- Public wharves and transport
- Public transport
- Boat sharing
- Street trailer parking
- Small craft storage
- History and recognition of said history
- Offshore residents (primary stakeholder)
- Out of area commuters
- Pollution – both industrial and recreational
- Child friendly zones/ parks/ BBQ
- Active transport and access
- Living on boats
- Education on the waterway
- Etiquette
- Super vessels (very large craft) and party boats
- Fishing on wharves and boats
- Sailing/ rowing
- Environmental protection and regeneration
- Foreshore access, domestic and feral animals

#### Challenges:

- Identifying key users
- Identifying all this issues
- Stakeholder balance of interests
- Parking issues
- Working with the RMS and their vision
- Funding
- Parking
- State legislation
- Wealthy boat owners



## Opportunities

- Old dinghy's provide opportunity for reuse
- Recognition of natural beauty of the area
- Signage opportunities and identification of public access to foreshore areas
- Improvement pathways
- Need to consider moorings from a holistic approach
- Strategy to deal with small boat/ vessel parking
- More dogs
- More taverns/ fish and chips shops
- Destination access
- Tourism facilities
- Licenced deliveries
- Public toilets

## Vision

- Protect and preserve the environment
- Accessibility, both physical and visual
- Shared environment
- Habitat protection, both flora and fauna
- Tourism/ aquatic
- Water quality
- Vistas/views (natural and otherwise)
- Soft and natural character, not hard edges
- **“A scenic reserve which caters for all interests while providing high level service and environmental protection”**
- **“Vibrant, filled with marine life, encouraging balanced human interaction with the estuarine environment”**
- **“To maintain and improve the amenity of Pittwater's Waterways”**

---

## REFERENCE GROUP RECOMMENDATION

That the reference group thanks Ms Ann-Maree Newbery, Principal Planner (Strategic) for her presentation on this item and that the outcomes of the workshops be noted.

(Mr Ray Mills / Merinda Rose)

---

## **STV4.2 Member presentation on roadkill and fauna connectivity**

---

### **Proceedings in Brief**

Mr David Palmer, Pittwater Natural Heritage Association presented and formulated a discussion on connectivity issues across the Peri-Urban area of the Northern Beaches and impact of new / existing roads on flora and fauna.

A copy of the Connectivity in the Peri-Urban areas of the Northern Beaches PowerPoint presentation provided to the Reference Group members is attached to the minutes at **Attachment 2**.

### **Discussion Points**

- Q:** Has there been a decline in roadkill since the fence has been erected on the Wakehurst Parkway?
- A:** The erection of the fence has assisted with guiding the animals to overhead crossings and Culverts in order to access the other side of the reserve.
- Q:** West from Katandra on both sides of the road, will that land be classified as open space?
- A:** This is also known as Ingleside Chase reserve and is a Bushland corridor.
- Q:** In regards to Eastern Mona Vale Road, what is the optimum amount of information that us as residents can include and push for when writing a submission to the relevant agencies to ensure we achieve the desired outcome?
- A:** The best outcome we could possibly achieve with the upgrade of the road is a vegetated overpass and additional underpasses. What is needed should be guided by experts who study this particular field of fauna crossings and create a working group of stakeholders to work together and create a plan for the future of this area.
- 

### **REFERENCE GROUP RECOMMENDATION**

3. The Reference Group thanked Mr David Palmer, Pittwater Natural Heritage Association for his presentation on this item.
4. That the group supports the creation of a working group to develop a plan for road crossings and fauna corridors across Mona Vale Road and the Ingleside precinct and that RMS be approached as the lead agency.

(Mr David Palmer / Ms Roslyn Marsh)

---

## **STV4.3 Priorities workshop**

---

### **Note**

Mr David Bremner, Community Engagement Officer advised that an email including a survey link will be distributed to members listing the possible topics for the Sustainable Towns and Villages Reference Group and that members respond with the items they would like included on the Agenda during this term. The results of this survey will be an item on the Sustainable Towns and Villages Reference Group agenda in November.

## STV4.4 Bike plan workshop

### Proceedings in Brief

Ms Michelle Carter, Road Safety Officer facilitated a workshop to establish a range of priorities and goals for the development of the new Pittwater Bike Plan.

The aim of this workshop is to plan and encourage an active Pittwater where cycling is supported as a travel choice around our town centres and villages, identify other important cycle linkages to destinations (E.g beaches and parks), cater to the needs and preferences of all riders (E.g, commuters, retirees and families etc.) to help develop and nurture a bike-friendly community.

A copy of the Bike Plan PowerPoint presentation provided to the Reference Group members is attached to the minutes at **Attachment 3**.

### Discussion Points

- Q:** Is there proposed to be an expansion of the shared path network to connect Newport to Avalon and beyond?
- A:** Yes, there are plans continue the shared path and on road network further north. This is funding dependant through RMS.
- Q:** The Palm Beach Ferry terminal is a large transport hub and the existing pathway infrastructure requires upgrading. Will this pathway continue to operate as a walkway or is it proposed to be a future shared path network?
- A:** This will not be a shared path network and will remain as a walkway. Discussions are currently in progress in regards to improving this infrastructure for the community and is funding dependant through external sources.
- Q:** Who is responsible to manage the Shared Path Networks if they require maintenance?
- A:** The Urban Infrastructure department within Council manages the maintenance of pathways.
- Q:** Barrenjoey High School is in desperate need of a review and upgrade to the walkways and safe crossing paths to cater for pedestrians, how can residents organize for this area to be reviewed in regards to pathways and crossings?
- A:** As part the of Bike Plan, we will be looking at a cycle network to improve the connection to Barrenjoey High School and to other destinations, such as beaches, parks and shops. Footpath construction across Pittwater comes from our Footpath Plan and only works currently scheduled in the Plan will be constructed as funding becomes available.

### Note:

The group broke up into small groups to brainstorm and discuss the following topics:

- Part 1 – Brainstorm words and thoughts when you hear the word bike
- Part 2 – Vision statement – What the residents think the Bike Plan vision should be.

The following was identified from the Bike Plan workshop – how can we achieve our Bike Plan goals?

---

### **Goal: To increase bike parking and end of trip facilities**

- More attractive/imaginative bike racks at villages/towns/hubs/public transport nodes
- Each town centre/suburb could have identifying rack (identifies which suburb you are in)
- Bike racks are quick and effective/inexpensive and they encourage people to use them
- An App for park and ride
- Roadside stenciling that indicated parking facilities

**Goal: To improve the awareness and safety of cyclists**

- Education: schools – Council led workshops
- Parents leading by example

**Goal: To promote cycling as a travel option that provides a healthy and social experience**

- Improved safety – shared paths!
- Secure storage at interchanges
- Take bike on bus
- Spilt shared paths if footpaths too narrow

**Goal: To promote cycling to tourists and holiday makers**

- Bike share facility
- Shared pathways
- Cycling amps 'where to go'
- Hospitality/accommodation/businesses to:
  - Bike hire/loans
  - Bike parking
  - Promotion for bike friendly in their marketing

**Goal: To develop partnerships with cycling stakeholders**

- Schools
- Local business
- Developers
- RMS and Transport for NSW
- Cyclists – recreational and commuters (local)
- Pedestrians

**Goal: To expand the shared path network**

- Identify destinations
  - Schools
  - Shops
  - Beaches
  - Transport hubs
- Natural paths/topography
- Lighting
- Bike share
- Apps/PR/promotion

**Goal: To encourage cycling as a travel option for people attending community events**

- Bike parking infrastructure
- Community bike hire/share
- Advertising of access – council
- Bike paths
- Safety crossings
- Road closure for special events

**Goal: To promote and raise awareness of the existing cycling network and encourage use**

- Schools, newsletters
  - Cycle map and App
  - Tourists
  - Safety
  - Speed limits
  - Bike events and bike garage
  - Stop road reserve infringements
- 

#### **REFERENCE GROUP RECOMMENDATION**

1. That the verbal update by Ms Michelle Carter, Road Safety Officer on the bike plan and the discussions recorded during the workshop be noted.
2. Members are encouraged to circulate the Bike Plan Survey to their networks.
3. That members be provided with an update at the Sustainable Towns and Villages Reference Group meeting in November.

(Mr Ray Mills / Ms Merinda Rose)

---

## **5.0 Emerging Business**

### **Mona Vale Place Plan - Street art mural at Harkeith Lane, Mona Vale**

Residents are appreciating and enjoying the projects executed as part of the Mona Vale Place Plan being executed by Council in conjunction with local Pittwater business and Northern beaches artists. The street art mural on Harkeith Lane in Mona Vale (Laneway next to Modus Operandi) completed by Sydney Street Arts looks fantastic and incorporates local heritage and animal species. The residents congratulate Council on the activation and execution of this project as part of the Enliven objectives, Council Placemaking and art objectives. Residents would like to encourage more of these projects within the Pittwater LGA.

---

#### **REFERENCE GROUP RECOMMENDATION**

That the group commends Council's Place Management on the Mona Vale Place Plan project in respect to the Muriel on Harkeith Lane and encourages all residents to visit the site to appreciate the beautiful artwork and encourage Council to execute more of these projects within the Pittwater LGA.

(Ms Sophie Butler / Ms Merinda Rose)

---

## **6.0 Next Meeting**

That the next meeting of the Sustainable Towns and Villages Reference Group meeting will be held on 18 November 2015 at the Coastal Environment Centre, Lake Park Road, North Narrabeen commencing at 4.00pm.

**THERE BEING NO FURTHER BUSINESS  
THE MEETING CONCLUDED AT 6.02pm  
N WEDNESDAY, 19 AUGUST 2015.**



## PURPOSE of PRESENTATION

To inform the Reference Group of the Pittwater Waterways Review and advise of the current status of the project





# AIM

Key aim of the Project is:

**To ensure the Ecologically Sustainable Management of the Pittwater Waterway now and into the future.**

There are a broad range of issues at play, the scope of the Project must consider the Pittwater Waterway from a holistic strategic planning perspective embracing sustainability considerations of Environment, Social, Economic and Governance

# PROJECT BACKGROUND

The Project was identified and established during the Preparation of draft Pittwater LEP.

During the public exhibition, the community and relevant stakeholders raised an array of issues and challenges facing the Pittwater Waterway. As a consequence of the scale of this interest Council resolved *"to undertake a strategic review of the land use planning provisions and zones relating to the Pittwater Waterway"*.



# PROJECT INITIATION

The initial stages of the Review have commenced with the establishment of project team responsible for project delivery and the finalisation of the Project Plan.

Initial work undertaken on the Project include:

- comprehensive analysis of existing studies and reports prepared in relation to the Pittwater Waterway
- Review of studies relating to the broader NSW waterways and boating context.

The literature review has assisted with the identification of key issues and gaps in information and data.

# ISSUE IDENTIFICATION

- Growth in boat ownership and vessel size
- Moorings, marinas, boating infrastructure - pump out facilities, dingy storage etc.
- Public access to the foreshore and waterway
- Protection of areas of high environmental value,
- Recreation
- Tourism
- Economic and employment
- Water quality
- Governance
- Planning controls



# MILESTONES & TIMEFRAME

Overall timing for the Project is estimated at approximately 18 months

Key Milestones for the first 4 tasks of the Project is outlined below.

Task	Timing
Commencement of stakeholder engagement	September 2015
Collate and review information and data received	Late October/ early November 2015
Preparation of Discussion Paper Pittwater Waterways Review: Our Waterway, Our Vision	December 2015/ January 2016
Exhibition of Discussion Paper	February 2016

## QUESTIONS

If you have any further questions or would like to discuss any of the issues raised, please call

**Anne-Maree Newbery ph. 9970 1164**

**Philip Adams ph. 9970 1158**



# WORKSHOP

Discuss in your group and record the following points as they relate to the Pittwater Waterway and foreshore edges:

ISSUES

CHALLENGES

OPPORTUNITIES



PITTWATER  
COUNCIL

# WORKSHOP

Discuss in your group and record

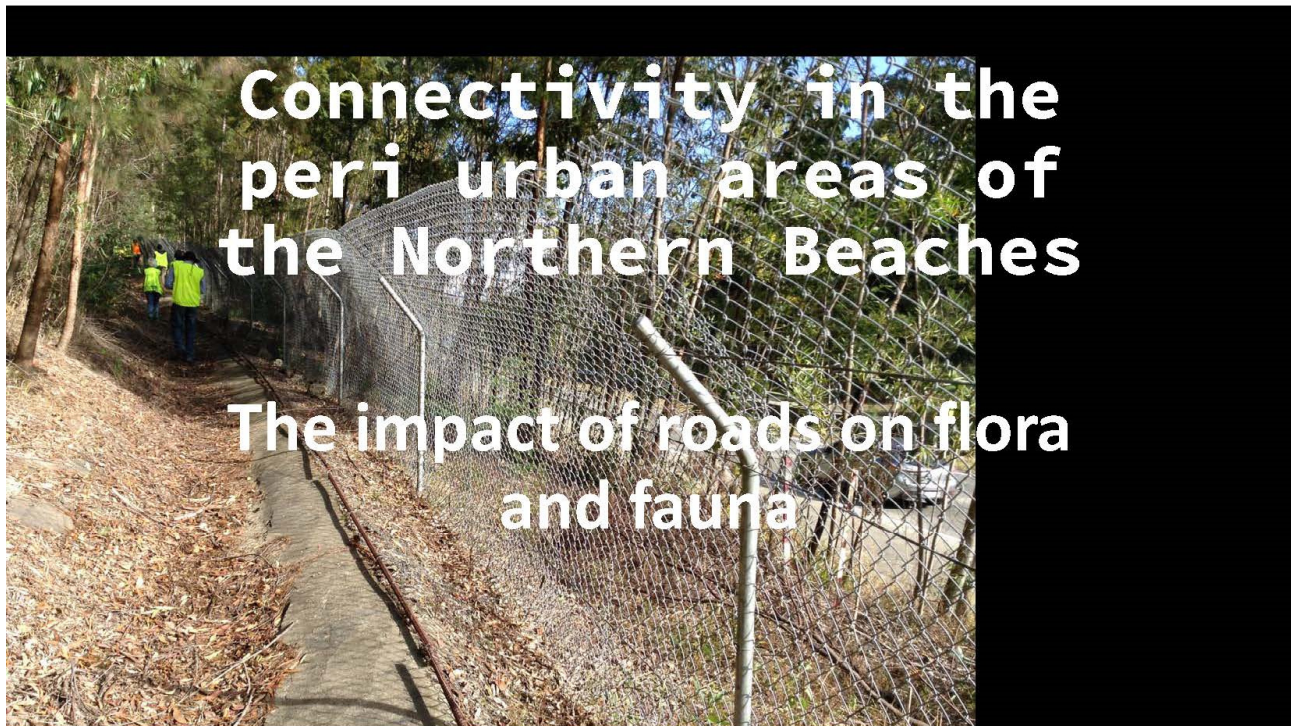
**Your vision for the future  
of the Pittwater Waterway**



PITTWATER  
COUNCIL



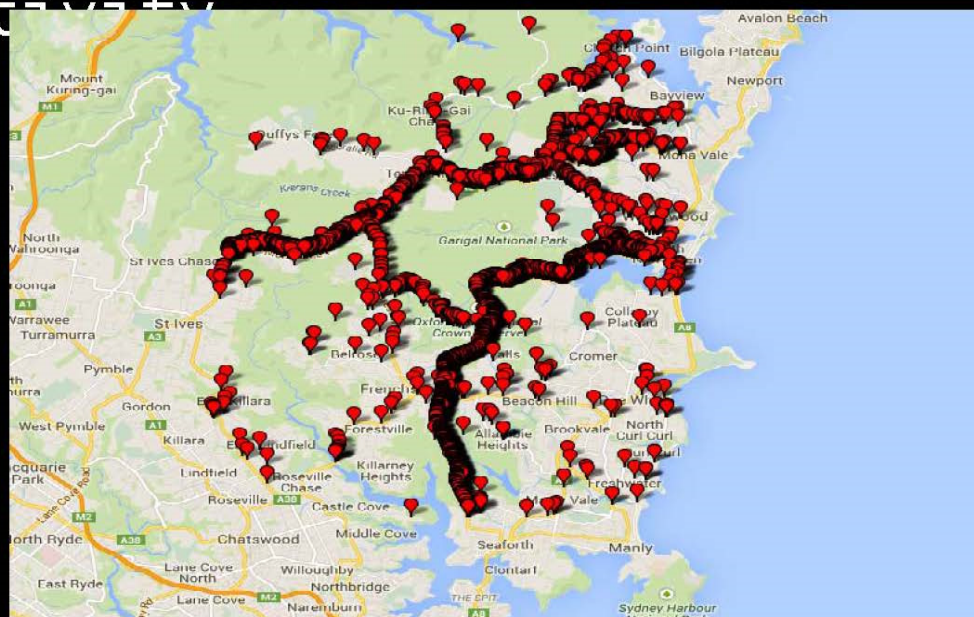




## The impact of roads on connectivity

- Direct mortality or injury

Roadkill of native animals in the Northern Beaches between September 2010 and April 2015

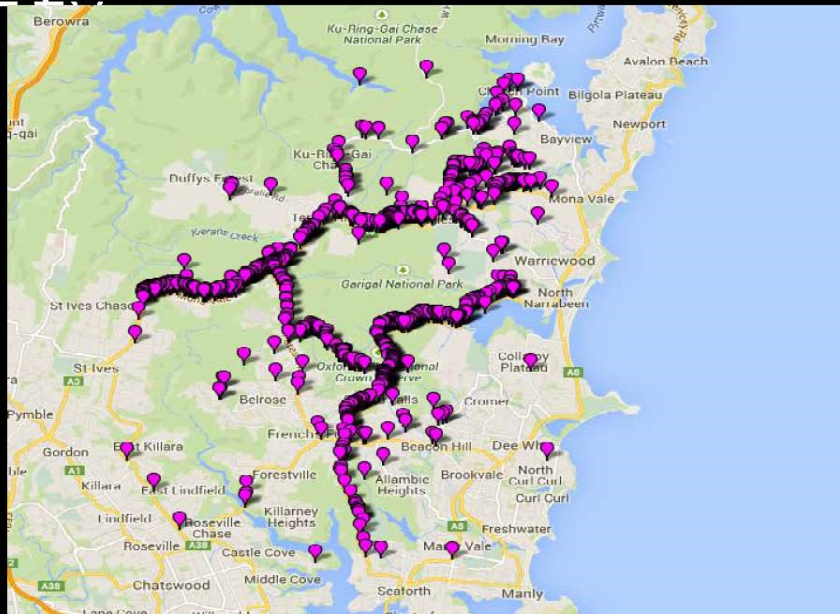




## The impact of roads on connectivity

- Direct mortality or injury

Swamp Wallabies killed in the Northern Beaches between September 2010 and April 2015



## The impact of roads on connectivity

- Impact on threatened species

Eastern pygmy possum



## The impact of roads on connectivity

Can lead to  
local extinctions



## The impact of roads on connectivity

- Habitat loss
- Edge effect of roads

Superb fairy wren

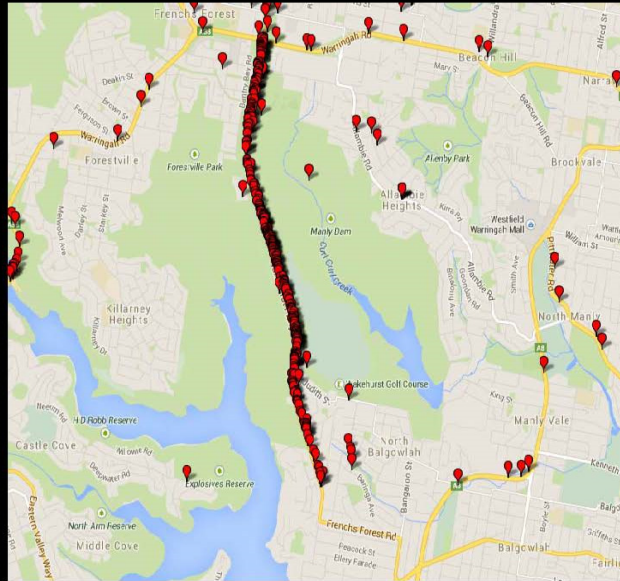




## The impact of roads on connectivity

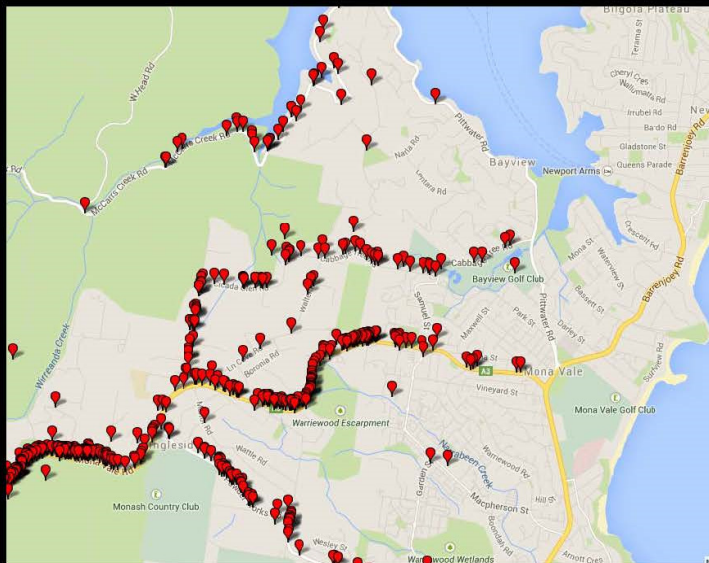
- Cut connectivity and can lead to inbreeding and genetic isolation

Manly Dam area



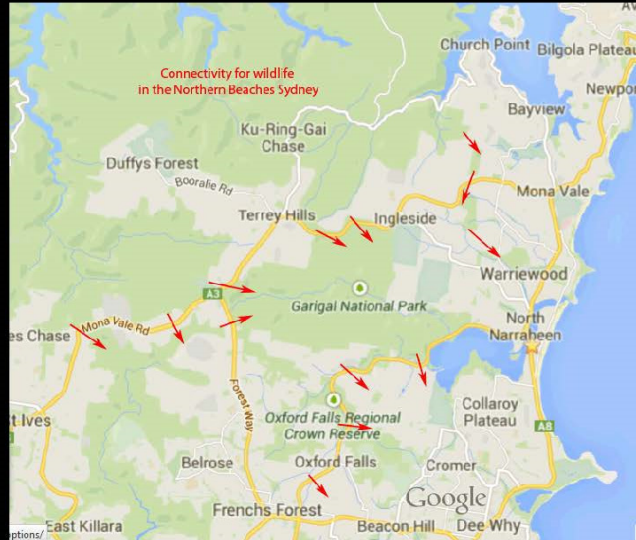
## The impact of roads on connectivity

- Impact on local roads



## The impact of roads on connectivity

- Wildlife connectivity across the Northern Beaches

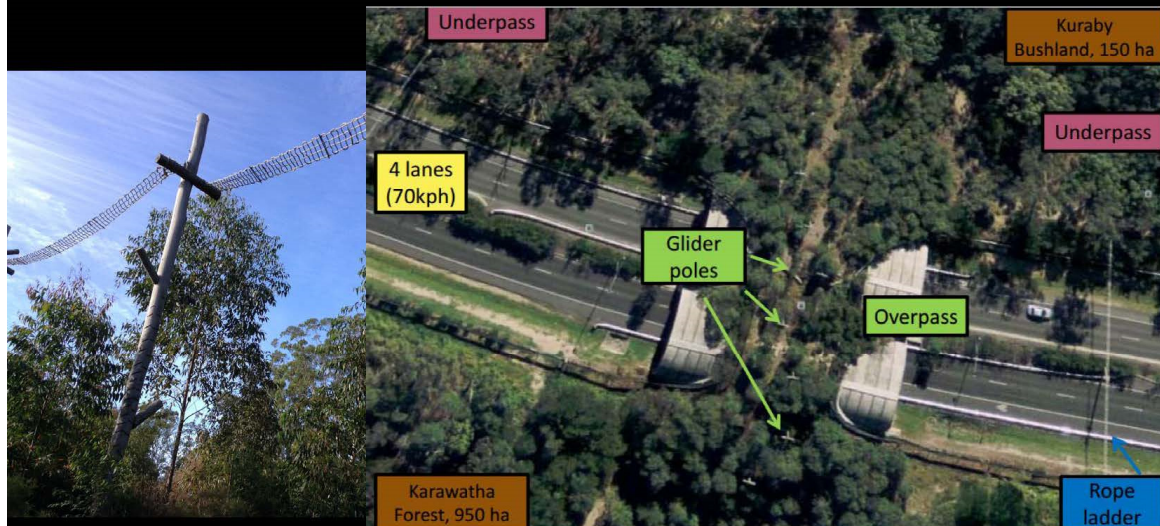


## Roadkill mitigation

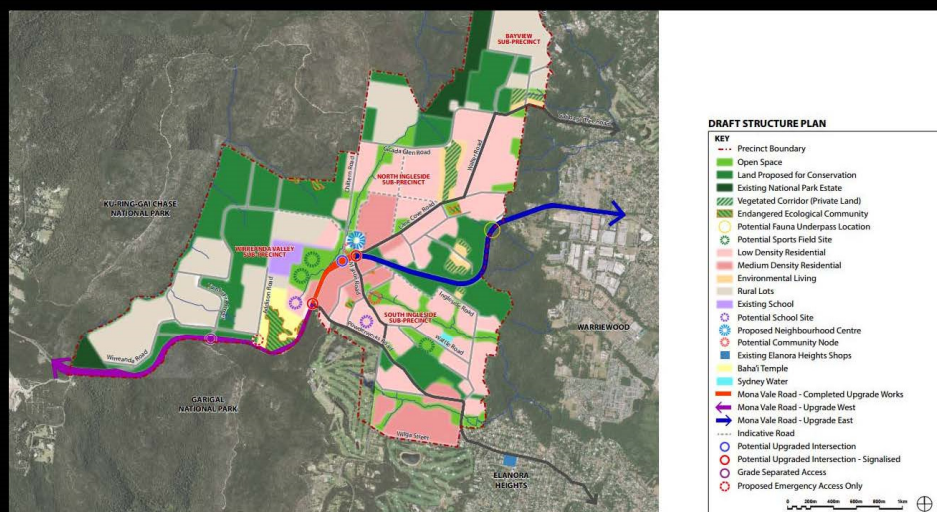




# Roadkill mitigation



# Ingleside Draft Structure Plan



## Mona Vale Road East proposed upgrade



## Future Directions

- Develop a regional plan for connectivity and roadkill mitigation
- Fence arterial roads and install appropriate connectivity such as underpasses/overpasses
- Determine which government agency is responsible for the maintenance and repairs of fences and underpasses/overpasses

## Future Directions

- Ensure roads are made safe for humans
- Monitor present populations and future populations to prevent local extinctions of threatened and non threatened native wildlife



## OVERVIEW

### What we will cover

- Active Travel Strategy
- Bike Plan
  - Background
  - Engagement Update
  - Bike Plan Goals
  - Developing aims



# Active Travel

## Active Travel Strategy

- Guide active travel across Pittwater
- What is active travel?
- What will it cover?



## BIKE PLAN BACKGROUND

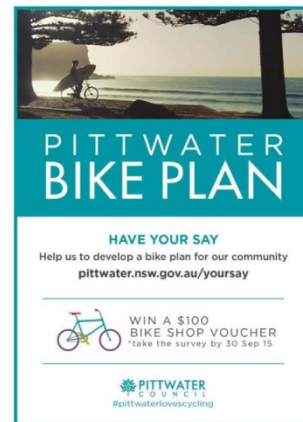
- Existing Bike Plan 1997
- Innovative direction
- Bike Plan will cover
  - Infrastructure
  - Connecting villages
  - Networks and linkages
  - Shared path and on road
  - Education
  - Behavioral change



# COMMUNITY ENGAGEMENT

## Update

- Cycling survey - 202 responses to date
- Post card
- Social media posts
- Council publications
- Discussions with residents groups



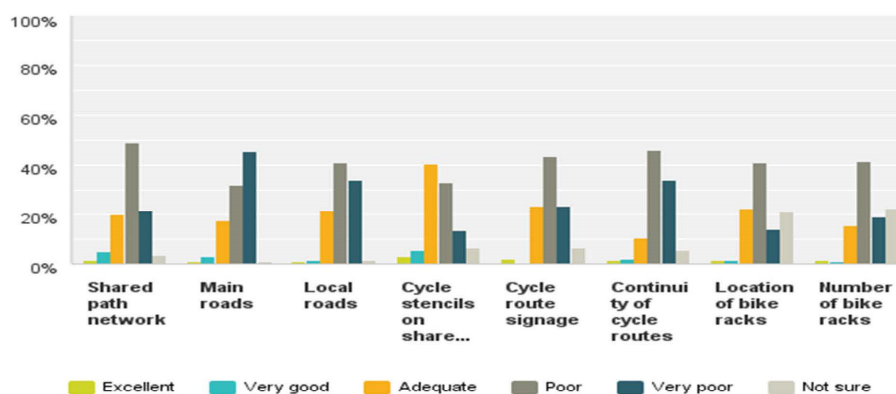
[pittwater.nsw.gov.au/bikeplan](http://pittwater.nsw.gov.au/bikeplan)



## Cycling Infrastructure

### Q3 How would you rate cycling infrastructure in the Pittwater area?

Answered: 183 Skipped: 9





# BIKE PLAN GOALS

## Top 3

1. To expand the shared path network.
2. To improve the awareness and safety for cyclists.
3. To promote cycling as a travel option that provides a healthy and social experience

**Tell us  
your top  
goals via  
the survey**



# BIKE PLAN AIMS

## Group activity

1. Discuss the Bike Plan goals.
2. Brainstorm how can we achieve these goals?
3. Note your top 5.
4. Report back to group.

**How can  
we  
achieve  
our goals?**





---

## **Council Meeting**

---

### **13.0          Adoption of Leading and Learning Committee Recommendations**

---

### **14.0          Adoption of Sustainable Towns and Villages Committee Recommendations**

---