

IVANHOE PARK

LANDSCAPE MASTERPLAN

OCTOBER 2021

REVISION 04

NBRS & PARTNERS PTY LTD

Level 3, 4 Glen Street, Milsons Point NSW 2061 Australia | +61 2 9922 2344 | nbrsarchitecture.com | Nominated Architect Andrew Duffin NSW reg. 5602 | ABN 16 002 247 565

VISION

**IVANHOE PARK WILL BE A WELCOMING
DESTINATION FOR COMMUNITY ENJOYMENT,
CELEBRATING ITS UNIQUE HERITAGE,
ENVIRONMENT, SPORT AND RECREATION. A
WELL MAINTAINED PLACE OF SANCTUARY,
REFLECTION AND LEARNING, CLOSE TO THE
HEART OF MANLY.**



PUBLIC DOMAIN PRINCIPLES

“ IVANHOE PARK WILL HARNESS AND ENGAGE WITH THE SPIRIT OF MANLY CREATING A PLACE THAT BECOMES A DESTINATION FOR PASSIVE AND ACTIVE RECREATION. ENCAPSULATING MANLY'S COMMUNITY LIFE AND CULTURE FOR BOTH PRESENT AND FUTURE GENERATIONS.

NBRS ARCHITECTURE, 2020

CONNECTED



INCLUSIVE



SOCIAL



DESTINATION



Ivanhoe Park will become a place for visitors and the local community to return time and time again, enjoying a place of positive spirit, unique and diverse in its offerings with a sense of a strong local character.

Our consolidated vision for the rejuvenation of Ivanhoe Park is to create a synergy of People, Place and Recreation. We have the opportunity to create a piece of Manly's urban fabric that encourages connectivity, acts as a catalyst for urban sustainability and resilience while strengthening as a destination for both passive and active recreation.

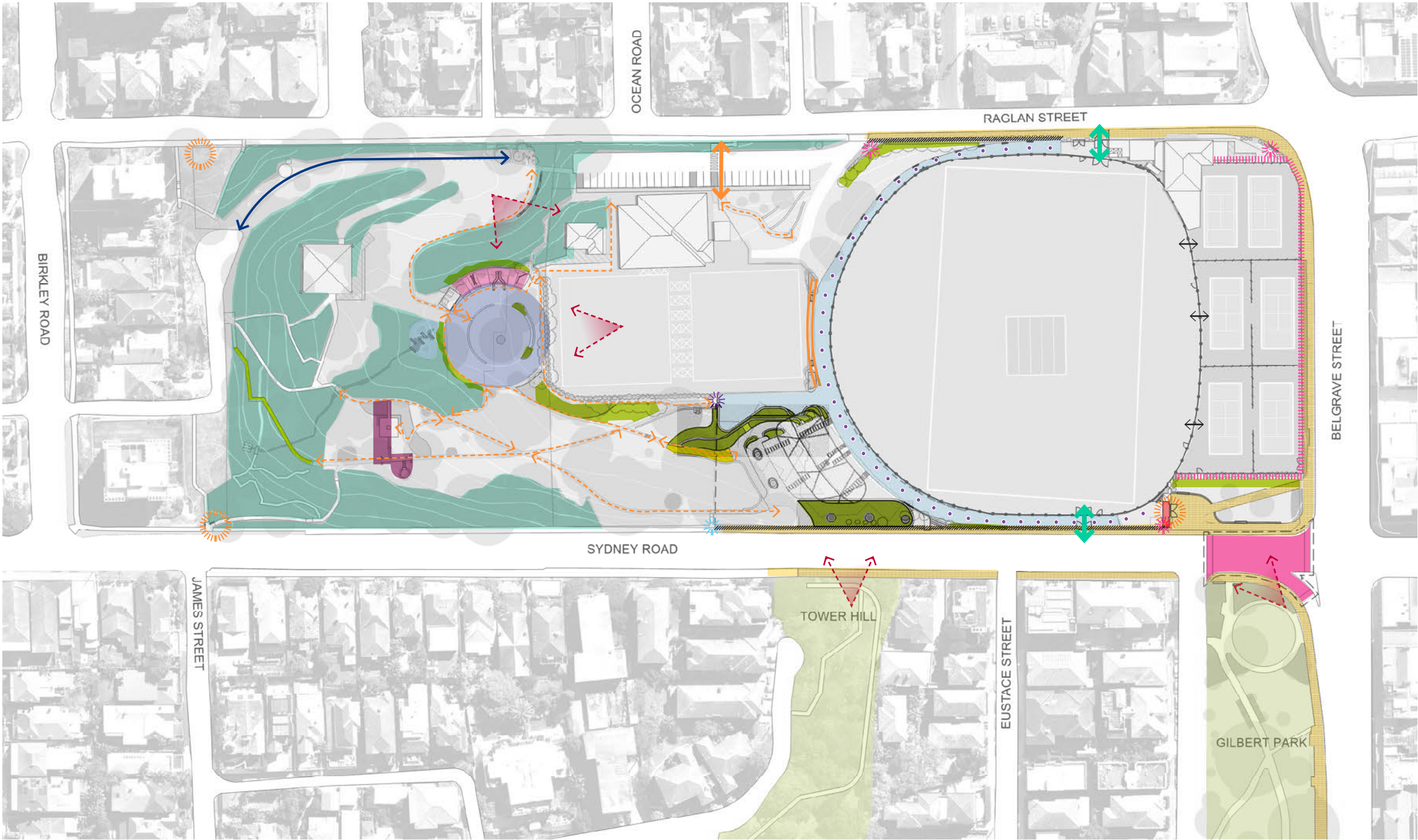
The following design principles have formed the foundations of this landscape design:

1. Connecting into the existing urban fabric and reaching out to the Northern Beaches.
2. Create a green heart that will leave a legacy and a destination loved by a growing local community.
3. Create a place that continues to evolve over time and welcomes all walks of life.
4. Strengthen Ivanhoe Park as a social and recreation hub that will strongly engage with the community providing flexible spaces for everyone and creating a memorable place that is rich in community culture and experience.
5. Strengthen and evolve a sense of place and identity for both passive and active recreation for a growing community and future generations.
6. Compliment and reinforce the cultural heritage of Ivanhoe Park, in accordance with its State Heritage listing and the guidelines of the Conservation Management Plan

STRATEGIES AND INTERVENTIONS

Key strategies and interventions across the masterplan include;

- Improved pavements surrounding the lower portion of Ivanhoe Park and the oval to connect with Belgrave Street, Manly Wharf and Manly town centre.
- Improved arrival experiences through enhanced entry spaces on Sydney Road and Raglan Street.
- Improved visual connection to Gilbert Park and Tower Hill Park by improved sight lines.
- Improved vehicle entries to Manly Oval.
- Improved appearance of the tennis court boundary with historic and contemporary player images on shade cloth.
- Enhanced pedestrian pathways and connections including circulation to tennis courts.
- New grandstand, clubhouse and amenities.
- New central lawn, play and picnic area.
- Improved minor park entries.
- Uniform materials and fixtures palette established throughout the park.
- Signage and lighting strategies to be considered and established throughout the park.
- Pedestrian improvements to include works to address community safety ie: accessibility, pedestrian pathways, clearer sight lines through gardens and improved lighting.
- Existing arris post to western park boundary to match park colour.
- Improved park boundary treatments including renewal of fencing and vegetation management works.



KEY

- REPLACE PAVING TO MATCH NBC PUBLIC DOMAIN PALETTE
- MAINTENANCE WORKS TO EXISTING PLANTING TO IMPROVE VIEWS
- PROPOSED PLANTING ASSOCIATED WITH NEW WORKS
- NEW GRANDSTAND AND ASSOCIATED WORKS
- NEW LAWN SPACE WITH FACILITIES FOR EVENTS- VIEWS ACROSS BOWLING GREEN TO OVAL

- NEW PROPOSED NATURE PLAYGROUND
- NATURALISED TREATMENT TO DRAINAGE CHANNEL
- PROPOSED BOARDWALK OVER EXISTING TREE ROOT ZONES CONNECTING PAVILION TO THE REST OF THE PARK
- LANDSCAPE TREATMENT AROUND WAR MEMORIAL
- NEW ACCESS PATHWAYS
- PROPOSED BLEACHER SEATING

- NEW ASPHALT PAVING WITH WALK OF FAME
- UPGRADED DRIVEWAY AND MAINTENANCE ACCESS ONTO OVAL
- PROPOSED NEW PALISADE FENCING
- GRAPHIC MESH BANNERS TO REPLACE EXISTING TENNIS MESH FENCING
- IMPROVEMENTS MADE TO EXISTING GATE ENTRIES
- TRAMWAY ADOPTION FROM IVANHOE BOTANIC GARDENS FINAL MASTERPLAN (JULY 2017)

- NEW SECURE GATE ENTRIES ASSOCIATED WITH NEW BUILDING WORKS
- NEW SIGNAGE OPPORTUNITIES
- NEW SANDSTONE FEATURE PAVING
- SYMBOLIC INTERPRETATION OF OLD SITE BOUNDARY
- NEW GATES INSTALLED TO TENNIS COURT FENCING TO ALLOW ACCESS BETWEEN COURTS
- ESTABLISH AND STRENGTHEN KEY VIEWS ACROSS IVANHOE PARK

MASTER PLAN



- 1

NEW ENTRY TO UPPER AND LOWER GRANDSTAND FROM SYDNEY ROAD.

2

RESTORATION OF MERRETT GATE ENTRY, WITH STATE HERITAGE LISTING PLAQUE AND PAVED THRESHOLD INTO THE PARK. EXISTING FOOTPATH UPGRADED WITH GRANITE PAVERS.

3

RE-PLANTING OF HEDGE AND UNDER PRUNING OF TREES TO ENHANCE SIGHT LINES. NEW TENNIS BANNER WITH HERITAGE DESIGN.

4

POTENTIAL OPPORTUNITY FOR DECK FOR SPECTATORS & CAFE STYLE SEATING (OUTSIDE MASTERPLAN SCOPE). IMPROVED INTERFACE WITH STREET, BY NEW PARK SIGNAGE, LOW PLANTING AND FENCE.

5

IMPROVED RAGLAN STREET ENTRY BY THE REMOVAL OF EXISTING BRICK ENTRY AND UPGRADED THRESHOLD PAVING WITH NEW PLANTING.
- 6

IMPROVEMENT WORKS TO MANLY OVAL INCLUDING RE-CENTERING OF CRICKET WICKETS, PICKET FENCE RENEWAL.

7

RE-PLANTING OF HEDGE & MAINTAIN TO IMPROVE SIGHT LINES OUT OF CAR PARK & ACROSS OVAL.

8

CARPARK:
 - DEFINE PEDESTRIAN ZONE FROM RAGLAN STREET PEDESTRIAN ENTRY/STEPS TO CLUBHOUSE.
 - RECONFIGURE CARPARK FOR SAFETY AND ACCESS

9

ADDITIONAL SPECTATOR SEATING BOOK ENDED WITH PLANTING AREAS.

10

UPGRADED HERITAGE ENTRANCE WITH NEW PAVING, PLANTING AND RESTORED GATES.
- 11

POTENTIAL OPPORTUNITY FOR RENOVATION OF CARE TAKERS COTTAGE WITH A NEW DECK FOR CAFE USE & IMPROVED PUBLIC ACCESS THROUGH BOWLING CLUB.(OUTSIDE MASTERPLAN SCOPE).

12

NEW NATURE AND SENSORY PLAYGROUND UTILISING EMBANKMENT.

13

CHILDCARE BUILDING REPLACED WITH CENTRAL LAWN SPACE FOR PASSIVE RECREATION AND PROVISION FOR EVENTS

14

ENHANCEMENTS TO ANZAC MEMORIAL AND SURROUNDS. LIFT CREPE MYRTLE CANOPY.

15

DRAINAGE CHANNEL NATURALISED WITH INCORPORATION OF NEW GROSS POLLUTANT TRAP. EXISTING WALLS DECONSTRUCTED AND PLANTED WITH NATIVES.
- 16

NEW BOARD WALK THROUGH GARDENS

17a

TRAMWAY:
 - TRAMWAY INTERPRETATION ADOPTED FROM 2017 MASTERPLAN

17b

CONTINUE TRAMWAY INTERPRETATION TO INTEGRATE INTO 2017 MASTERPLAN ADOPTION.
 - REPLACE EXISTING LOW SAFETY FENCE WITH INTERPRETATION PANELS.
 - UNDER- PRUNE AND SELECTIVELY REMOVE UNDERSTOREY PLANTING TO OPEN VIEWS TO BOWLING GREEN AND MANLY OVAL

18a

NEW COVERED SHELTER.

18b

BENCH SEATING ALONG RETAINING WALL AND PATHWAY.

19a

UPGRADE PAVING TO GRANITE UNIT PAVING
- 19b

UPGRADE PAVING TO NEW ASPHALT PAVING WITH HALL OF FAME PLAQUES INSET INTO PAVING.

20

INTERPRETATION OF OLD SITE BOUNDARY

21

NEW 1.8M PALISADE FENCING

22

REPLACEMENT OF BENCH SEATING IN FRONT OF GRANDSTAND WITH CLASSIC PLAZA BENCH.

23

RE-ALIGNMENT OF PATH WITH NEW SANDSTONE SEATING TERRACES INTEGRATED INTO SLOPED LAWN AREA.

24

MINOR REFURBISHMENTS OF SCOUT HALL EXTERIOR

25

LIFT CANOPY OF TREES BETWEEN CARPARK AND TRAMWAY.

26

NEW HANDRAIL TO SANDSTONE STAIRCASE.

27

GROSS POLLUTANT TRAP INSTALLED TO COLLECT LITTER AND DEBRIS ENTERING INTO THE PARK.
- 28

NEW BENCH SEATING TO NORTHERN SIDE OF OVAL

29

SANDSTONE THRESHOLD AND REFURBISHMENT OF GATE ENTRIES.

29a

IMPROVEMENTS TO PARK AVE ENTRY FOR ACCESS AND SAFETY.

30

RENEW EXISTING ARRIS POST AND RAIL FENCE TO WESTERN PARK BOUNDARY IN CHARCOAL GREY TO MATCH PARK COLOUR PALETTE.

31

INVESTIGATE POTENTIAL FOR FUTURE PEDESTRIAN CROSSING THRESHOLD FOR CO-LINKING OPENSAPCE AND TRAFFIC CALMING.

32

CONSTRUCT SINGLE ACCESSIBLE PUBLIC TOILET
- *NOTE: IMPROVE POLE LIGHTING ALONG MAIN PATHWAYS. PARK LIGHTING AND SIGNAGE STRATEGY TO BE INTEGRATED THOUGHOUT THE PARK TO BE FURTHER EXPLORED.

DETAIL DESIGN MOVES

CENTRAL LAWN

At the centre of the park is a natural gully in which is located the scout hall, water course and the existing childcare centre (that is to be demolished) and a small playground and sensory garden. With the demolition of the childcare centre, opportunity exists to enhance this area with an open lawn, new children's nature play space, amenities and picnic shelter. Improved access is proposed with refurbished stair to the carpark and potential accessible link to the bowling club (outside masterplan scope).

Areas of rock cuttings to the rear of the child care building are to be "naturalised" by returning this area to previous levels. Existing rock outcrops are to be emphasised by removing weeds and overgrown shrub and groundcover planting. The existing drainage line and trash rack are to be improved.

The area is to be made safe with new lighting both up lighting to feature trees and area lighting with pole top ittings.



The Central Lawn detailed plan

1:400 @ A3

- 1 RETAIN EXISTING TREES AND UPLIGHT
- 2 LEVEL LAWN AREA
- 3 RESHAPE/NATURALISE SOUTH WEST CORNER OF EXISTING CHILDCARE CENTRE TO BLEND LEVELS OF PARK INTO TERRACE. RETAIN NATURAL STONE OUTCROPS.
- 4 NEW LOW STONE TERRACE AND PAVED AREA SET IN LAWN, FACILITIES FOR EVENTS/FUNCTIONS
- 5 NEW NATURE PLAY AREA WITH PICNIC SHELTER AND BBQ FACILITIES INTEGRATING WITH EMBANKMENT.
- 6 NATURALISATION OF DRAINAGE CHANNEL UPGRADE OF GPT TO BE CONSIDERED
- 7 KENTIA PALM PLANTING TO FRAME EITHER END OF BOWLING GREEN WORKING WITH EXISTING KENTIA PALMS.
- 8 SELECTIVELY CLEAR MONSTERIA AND OTHER PLANTING TO EXPOSE ROCK OUTCROPS.
- 9 IMPROVED STAIR ACCESS TO CARPARK.
- 10 POTENTIAL FOR NEW LEVEL CONNECTION FROM CENTRAL LAWN TO CARETAKERS COTTAGE AND BOWLING CLUB (OUTSIDE MASTERPLAN SCOPE)
- 11 POTENTIAL STAIR CONNECTION TO CARPARK.
- 12 TREE REMOVAL TO OPEN VIEWS TO BOWLING GREEN FROM PARK.
- 13 FASCAD TREATMENTS TO SCOUT HALL TO INCLUDE TIMBER BATTENING, PAINTED FINISHES AND GREEN WALLS TO BREAK DOWN MASS OF BUILDING.
- 14 NEW DECK AT LOWER LEVEL TO WRAP AROUND BUILDING, PROVIDE ACCESS TO EXISTING GROUND TO IMPROVE BUILDING USE AND AMENITY.
- 15 IMPROVE PATHWAY CONNECTION FROM SCOUT HALL TO ANZAC MEMORIAL AND TRAMWAY.
- 16 UPLIFT AND THIN CANOPY OF LARGE TREES TO EAST OF HALL AND RE-TURF WHERE REQUIRED.
- 17 REMOVE NON-SIGNIFICANT TREES.
- 18 NEW PATHWAY CONNECTIONS IN CURVED FORMATION.
- 19 MEMORIAL TO BE RESTORED AND ENHANCED WITH LARGER PAVED SURROUND AND LOW STONE / RED BRICK WALLS AND EDGING TO ACCOMMODATE CHANGE IN LEVELS (LIAISE WITH RSL).
- 20 REPLANTED LOW HEDGE MAINTAINED AT 1.0M HIGH ALONG WIDENED FOOTPATH
- 21 WILD FLOWER DISPLAY GARDEN BEDS FRAMING MAIN PATH.
- 22 CONSTRUCT SINGLE ACCESSIBLE PUBLIC TOILET

NBRS & PARTNERS PTY LTD

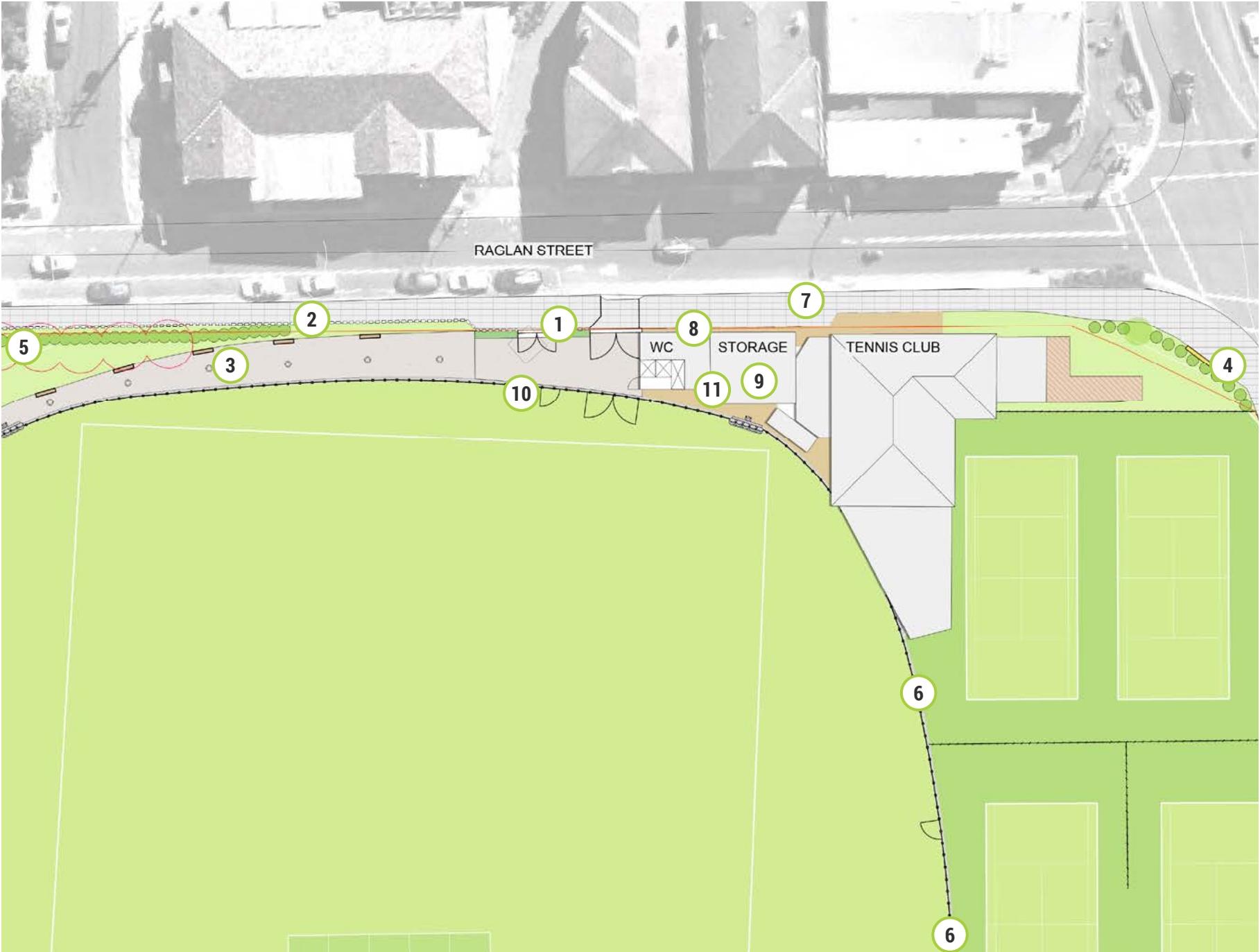
DETAIL DESIGN MOVES

RAGLAN STREET ENTRANCE

The existing entry is to be enhanced with the demolition of the existing ticket turnstile structure, removal of shrub planting to create an open and inviting forecourt. New accessible and unisex toilets and bin storage area are to be constructed within the greenkeepers store area. Emergency vehicle and pedestrian access to the oval is to be improved. A new roller door entry from Raglan Street to the main green keepers shed, with new soil store is proposed. Refurbishment of the green keepers building including facade treatment could incorporate a rooftop platform for score keepers and or TV camera location.

The footpath on Raglan Street is to be widened with the removal of a timber fence and lowering of site levels. New granite paving to match Belgrave Street.

Precedent



Raglan Street entrance detailed plan

1:400 @ A3

- 1 NEW ENTRY FORECOURT WITH REMOVAL OF EXISTING TURNSTILE BOOTH AND INSTALLATION OF NEW GATES
- 2 NEW 1.8M PALISADE FENCING INSTALLED ALONG RAGLAN STREET.
- 3 NEW ASPHALTIC PAVING WITH HALL OF FAME INLAYS
- 4 NEW SIGNAGE ON RAGLAN AND BELGRAVE STREET CORNER WITH ASSOCIATED LOW HEDGE PLANTING AT 1.0M HIGH.
- 5 REMOVAL OF EXISTING OLEANDER SHRUBS HEDGE PLANTING MAINTAINED AT 1.8M HIGH.
- 6 NEW GATES TO BE INSTALLED TO ALLOW SPECTATORS ACCESS TO OTHER COURTS VIA OVAL DURING COMPETITIONS.
- 7 NEW GRANITE UNIT PAVING TO MATCH COUNCIL'S PUBLIC DOMAIN GUIDELINES.
- 8 RECONFIGURE EXISTING STORAGE AREA TO INCORPORATE AN ACCESSIBLE WC AND POSSIBLE UNISEC WC (SPACE PERMITTING). INCLUSION OF BIN STORAGE AREA AND NEW ROLLER DOOR ACCESS.
- 9 NEW ROLLER DOOR ENTRY TO GREEN KEEPERS STORE
- 10 NEW PEDESTRIAN ACCESS GATE ONTO OVAL NEXT TO EXISTING GATES
- 11 EXISTING ROOF TO BE MODIFIED TO ACCOMODATE SCORE KEEPERS PLATFORM / TV CAMERA LOCATION.

DETAIL DESIGN MOVES

SYDNEY ROAD ENTRY

The arrival experience to the park could be enhanced with potential paved pedestrian zone aligned to Gilbert Park. This gesture strengthens the connection between the two parks and the Manly town centre. Material and plant species seen in Gilbert Park will feature in the entry forecourt including low sandstone edging and timber bench seating. The demolition of the existing brick ticket booth, restoration works, and new paving at the Merrett Gates enhances this historic entry. Park's state heritage listing plaque to be incorporated on gate structure.

- 1 INVESTIGATE POTENTIAL FOR FUTURE PEDESTRIAN CROSSING THRESHOLD FOR CO-LINKING OPENSOURCE AND TRAFFIC CALMING.
- 2 RAISED SANDSTONE EDGING TO MATCH GILBERT PARK.
- 3a REMOVE CALLISTOMEN PLANTING AND REPLACE WITH 1.8M HEDGE TO MATCH GILBERT PARK
- 3b PLANT 1.0M HEDGE BETWEEN TENNIS COURT FENCE AND MERRETT GATES TO ALLOW VIEWS THROUGH TO MANLY OVAL.
- 4 NEW ALIGNMENT OF LAWN EDGE INTEGRATED WITH BENCH SEATING TO OPEN UP PLAZA SPACE INFRONT OF MERRETT GATES.
- 5 REPLACE EXISTING ASPHALTIC PAVING WITH GRANITE UNIT PAVING IN ACCORDANCE WITH COUNCIL PUBLIC DOMAIN GUIDELINES.
- 6 INSTALL BIKE PARKING.
- 7 SANDSTONE PAVED THRESHOLD.
- 8 NEW PALISADE FENCING INSTALLED ALONG SYDNEY ROAD ON SANDSTONE HOB.
- 9 NEW GRANITE UNIT PAVING TO MATCH COUNCIL'S PUBLIC DOMAIN GUIDELINES.
- 10 NEW SIGNAGE.
- 11 RESTORE MERRETT SANDSTONE GATES, INCLUDE PLAQUE, UPLIGHTING.
- 12 TREE AND GARDEN MAINTENANCE ACTIVITIES TO IMPROVE PARK PRESENTATION VIEWS FROM GILBERT PARK AND BELGRAVE STREET INTO IVANHOE PARK.



Sydney Road Entrance detailed plan

1:400 @ A3

DETAIL DESIGN MOVES

THE PAVILION

The Pavilion Precinct will provide a new pavilion clubhouse and grandstand, creating new entrances into the park along Sydney Road while seamlessly integrating the new building into the landscape of Ivanhoe Park.

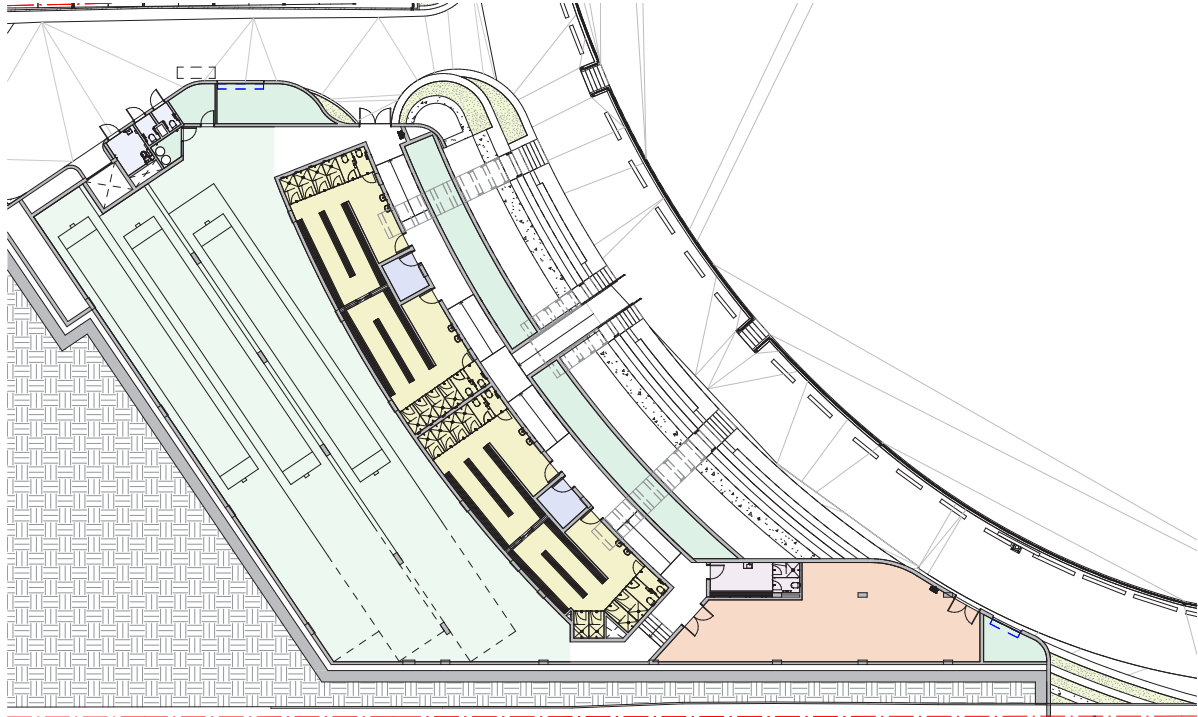
- 1 NEW PAVILION/GRANDSTAND ENTRY
- 2 NEW PARK/UPPER GRANDSTAND ENTRY
- 3 NEW CONNECTION FROM GRANDSTAND TO WESTERN SIDE OF THE PARK.
- 4 BOARDWALK CONNECTION FROM GRANDSTAND TO EXISTING PATH NETWORKS TO MINIMISE IMPACT ON EXISTING TREES.
- 5 TERRACE PLANTING TO FEATURE NATIVE HEATH AND WILDFLOWER SPECIES.
- 6 GREEN ROOF TO NEW PAVILION.
- 7 PLANTING TO BOOKEND BLEACHER SEATING.
- 8 NEW BLEACHER SEATING.
- 9 WALK OF FAME IN ASPHATIC PAVING.
- 10a UPGRADE EXISTING BENCH SEATING.
- 10b UPGRADE EXISTING BENCH SEATING WITH BACKED SEATING.
- 11 WALL TO BE COVERED WITH CLIMBING PLANT WITH NARROW GARDEN BED ESTABLISHED AT THE BASE OF WALL.
- 12 GRANDSTAND ROOF
- 13 UPPER GRANDSTAND SEATING
- 14 UPPER VIEWING TERRACE
- 15 LIFT
- 16 DELINEATE HISTORIC BOUNDARY
- 17 MAINTAIN EXISTING ACCESS AND BUS STOP

1:500 @ A3



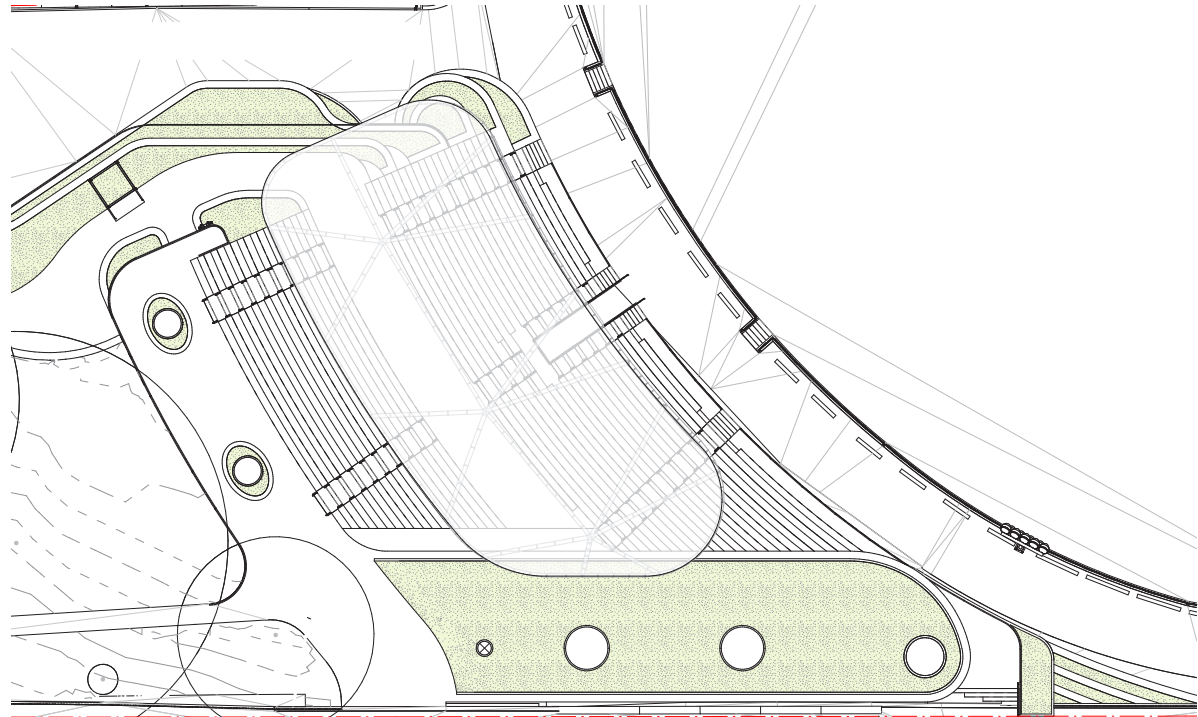
Club house and grandstand detailed plan

1:400 @ A3



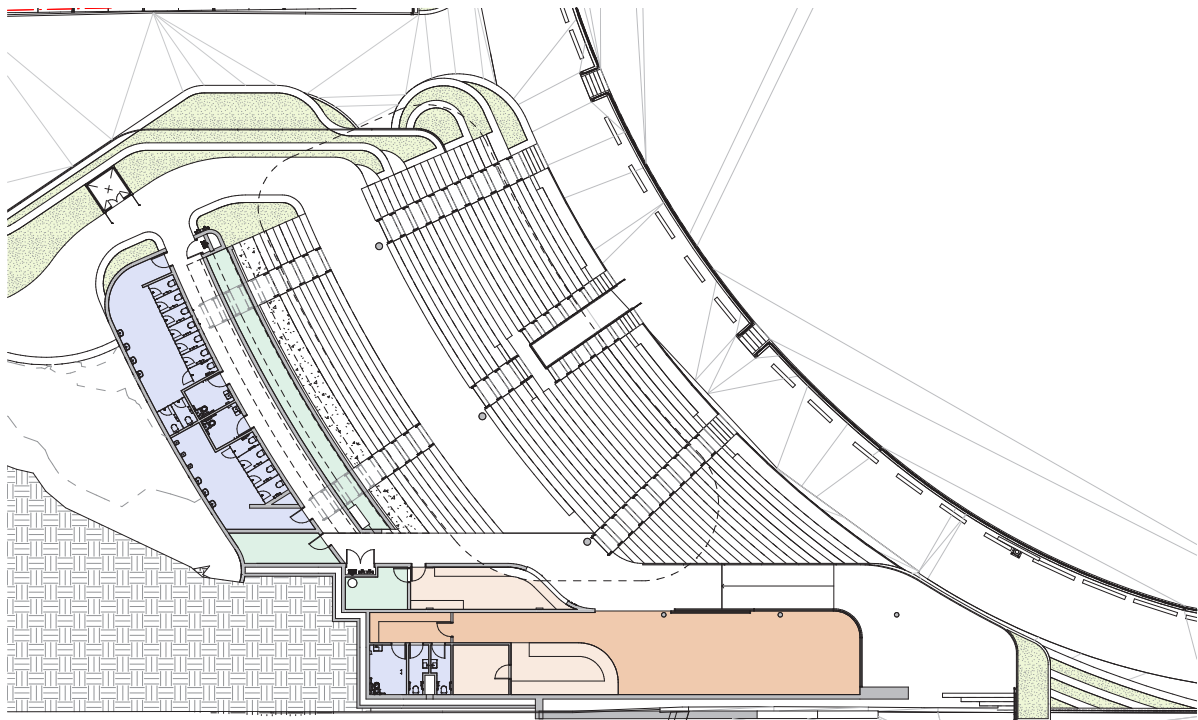
GROUND FLOOR PLAN

1:500 @ A3



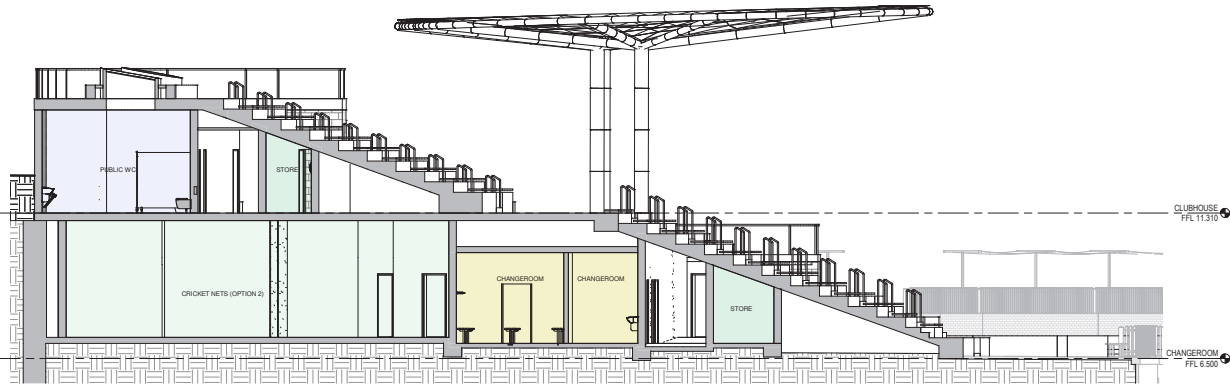
ROOF PLAN

1:500 @ A3



FIRST FLOOR PLAN

1:500 @ A3



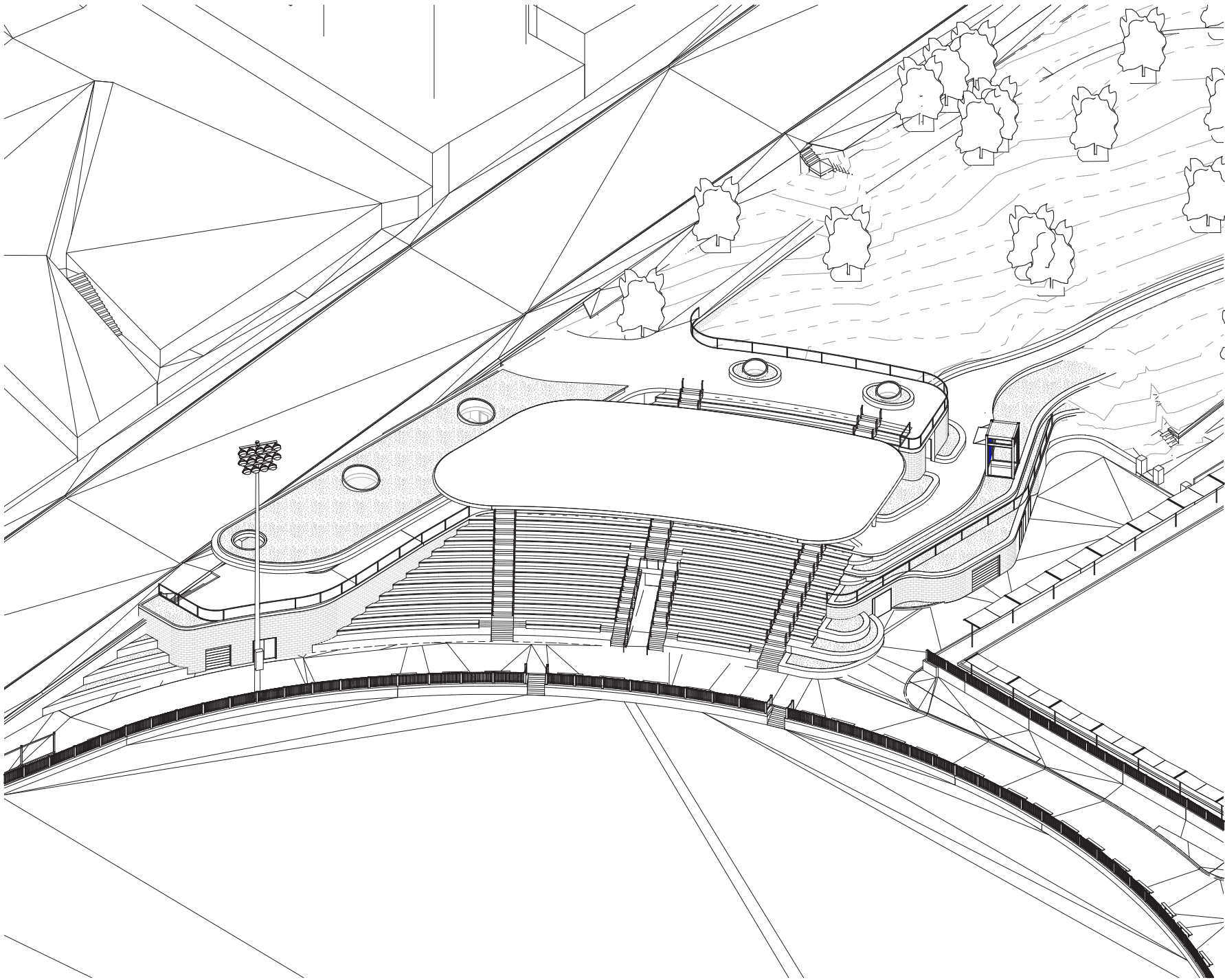
SECTION

1:500 @ A3

SITING & FORM

Pavilion has been orientated along the Sydney Road frontage to enable improved sight lines to the oval and widen the aperture and view corridor between the sporting and park precincts.

- Pavilion siting provides an acoustic and wind buffer from Sydney Road to the seating areas.
- Grandstand seating merges into the natural contours of the park, transitioning from bleacher seat into landscaped grass spectator zone into landscaped terraces.
- The flow references the movement of the park setting to sporting precinct as one of nature to constructed, tranquil to activated, introspective to extroverted.
- Activated contours address pedestrian flow and concentrate activity nodes:
- Oval entry level has emphasis on sporting access and activity, with change rooms located off this level to ease movement of players onto the oval. Public accessible amenities and storage also provided on this level
- Grandstand/Pavilion entry level concentrates spectator functions through the intermediate level, offering the primary pavilion and terrace viewing areas, kiosk and spectator amenities, and a meandering pathway that connects back into the park. This could be a gated entry point for ticketed events
- Park entry point creates a wider on-grade entry point into the park that promotes a pedestrian desire line along Sydney Road and into the mid contour of the park with a new timber boardwalk. (Continue to page 33)



Precedents



This improved pedestrian access point is conceived to promote pedestrian movement to the south of the pavilion and grandstand, reducing pedestrian conflict during ticketed events. The upper level walkway provides glimpses of the sporting events from an upper vantage point, infusing the park and spectator experiences together.

MATERIALITY

- Material palette borrows from natural elements of the park setting. Green roof over the pavilion creates a playful form that reads as an extension of the park into the sporting precinct, taken up again in landscaped viewing terraces that eventually merge into the park
- Organic building forms that work with contour lines soften the built mass and allow for the park context to pervade into the built form
- Timber seating elements to provide warmth to the concrete grandstand structure
- Sandstone cladding to the Pavilion and grandstand facade takes cues from the natural sandstone escarpment and remnants of Dalley's Castle wall and Merrett Gates
- Grandstand canopy conceived as a light floating form that opens the visual connection between sporting and park precincts



3D PERSPECTIVES



3D PERSPECTIVES



3D PERSPECTIVES

