

PLAN OF MANAGEMENT FOR COMMUNITY LANDS

(Part 2, Division 2 of the
Local Government Act, 1993)

FORTY BASKETS RESERVE Balgowlah Heights



Prepared by the
Environmental Services Division

1. DESCRIPTION

1.1 Title, Area, Ownership

Title: Asset Management Nos. 12, 13, 102
- 106, 130

Lot 3, DP 622591

Lot 4, DP 567843

Beatty Street, Balgowlah Heights.

Lot 17B, 18B, 19B, 20B & 21B,
DP 350345

Beatty Street, Balgowlah Heights

Lot 35A, DP 9202

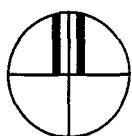
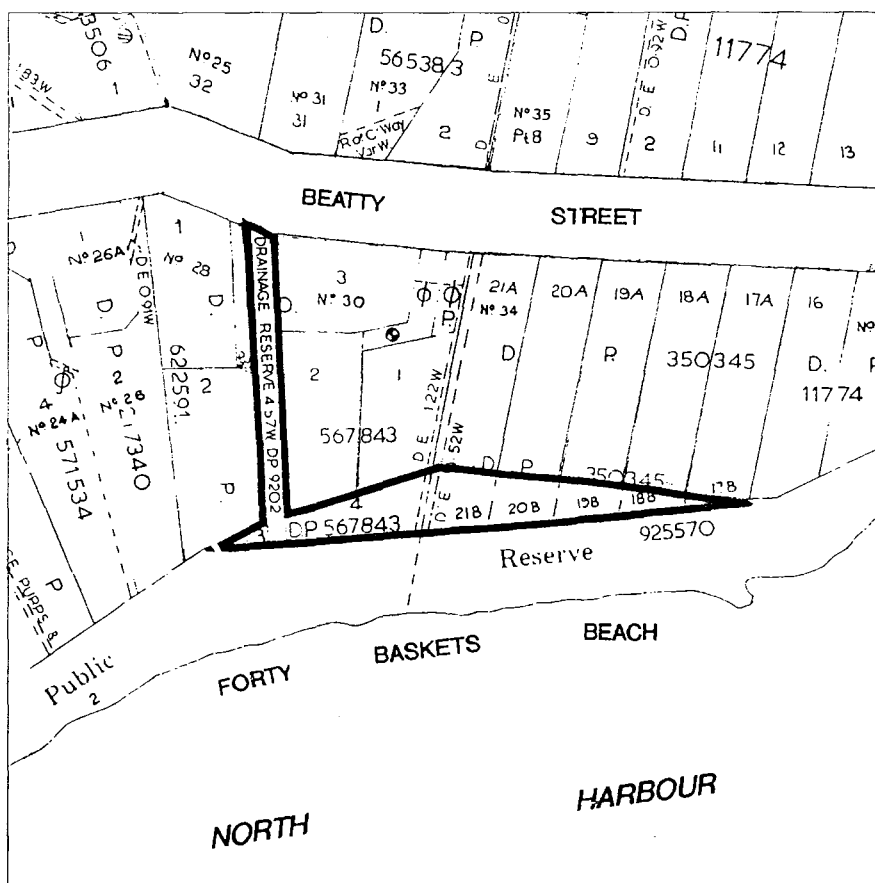
Beatty Street, Balgowlah Heights

Area: 1231.05m²

Owner: Manly Council

1.2 Landform, Vegetation, Use

The community land is a grassed area along the foreshore of Forty Baskets Beach and a drainage easement to Beatty Street. Vegetation includes a row of Norfolk Island Pines. The principal uses are foreshore access and informal recreation activity.



Not to scale

FORTY BASKETS RESERVE

Prepared by the
Environmental Services Division

1.3 Links to Other Areas and Adjacent Land

The community land with adjoining Crown Land, forms part of the Manly Scenic Walkway and provides access to the beach and adjoining rock platforms.

1.4 Reserve History

-

1.5 Available Plans

-

1.6 Leases

None

1.7 Council File References

Forty Baskets Reserve R5/20 Forth
Baskets Beach R5/19

2. CONTEXT

2.1 Classification under the Local Government Act, 1993

The park is classified as Community Land and is categorised as Natural Area - Foreshore and Park.

The drainage easement is classified operational and is subject to reclassification to Community Land.

3. STATEMENT OF FUNCTION AND VALUE

3.1 Values and Function of the Land

Forty Baskets Reserve is of local, district and regional significance in terms of its natural, visual and recreational value and function. It is also of local and district significance as a social and recreational resource and fulfils local demands in terms of a cultural, educational, future generational and heritage resource.

It is an important element in the Manly Scenic Walkway and in conjunction with adjoining Crown Land comprises a major foreshore open space reserve.

VALUE AND FUNCTION	SIGNIFICANCE						
	Local	District	Regional	Metropolitan	State	National	International
Natural	■	■	■				
Visual	■	■	■				
Social	■	■					
Recreational	■	■	■				
Cultural	■						
Educational	■						
Future Generational	■						
Heritage	■						

Values and function of the land
Forty Baskets Reserve

4. MANAGEMENT

4.1 Means of Achieving the Objectives

The draft plan of management for community land is based on 15 objectives. Those applicable to Forty Baskets Reserve are indicated on the following tables starting on page 5.

4.2 Issues for the Master plan

Issues, Concerns, Opportunities

1. Prepare Master plan for Community Land and adjacent Crown Land.
Response: Adopt this approach to the preparation of the Master plan.
2. Consider future options for the ongoing and provision of facilities in consultation with the local community.
Response: Adopt this approach to the preparation of the Master plan.

3**OBJECTIVE**

Integrate local drainage needs into park design and bushland management.

MEANS OF ACHIEVING THE OBJECTIVE

1. The preparation of the Master plan should include consultation on neighbourhood drainage requirements and design proposals where appropriate.
2. Utilize contemporary skills in the design of multi-function drainage areas eg. sediment detention basins.
3. Ensure all drainage designs address: bushland maintenance; erosion; siltation and pollution controls; flooding issues; penetration for water table improvement and compatibility with recreational and aesthetic interests.

PERFORMANCE MEASURES

1. Drainage issues included in the preparation of the Master plan.
2. The drainage designs reflect current knowledge on drainage issues.
3. Drainage issues are addressed in park design and bushland management; and reviewed in relevant reviews of environmental factors.

4

OBJECTIVE

To include heritage conservation and cultural identity matters when designing and maintaining our reserves.

MEANS OF ACHIEVING THE OBJECTIVE

1. All actions proposed in the Master plan should comply with the statutory heritage provisions of Manly Local Environmental Plan 1988 and Sydney Regional Environmental Plan No. 23 - Sydney and Middle Harbours.
2. Make all persons working in the reserves aware of the particular heritage, conservation and cultural value of the reserve as identified in various studies and listings.
3. Works in cultural reserves should maintain the particular identified character of the reserve unless there is community agreement for an alternative approach. Application of the principles of the Burra Charter are relevant here.
4. The Master plan should adhere to the principles and standards in the Manly Identity Programme in respect to furniture, signage, colour, etc.
5. Aboriginal heritage sites should be recorded in relevant Master plans, where appropriate.

PERFORMANCE MEASURES

1. Compliance with statutory provisions achieved.
2. The Master plan includes information on heritage, conservation and cultural matters. These are disseminated to workers.
3. Designs should be consistent with particular identified character of each reserve.
4. The Manly Identity Programme principles and standards are adhered to.
5. Aboriginal heritage sites are included in the Master plan, where appropriate.

7**OBJECTIVE**

To manage all open space land in a flexible manner and to ensure that local needs are met.

MEANS OF ACHIEVING THE OBJECTIVE

1. Liaise with the local neighbourhood when assessing future facilities for reserves to determine needs which may include play areas, dog areas, toilets, picnic and barbeque area and space for ball games.
2. Include identified needs in the Master plan.

PERFORMANCE MEASURES

1. Liaison with local groups undertaken during the planning process.
- 2.1 Identified needs if assessed for compatibility, demand and availability of resources.
- 2.2 Appropriate facilities included in the Master plan.

8

OBJECTIVE

Provide a major open space linkage connecting harbour and ocean foreshores, creek and lagoon edge, and the national parks.

MEANS OF ACHIEVING THE OBJECTIVE

1. Provide appropriate paths and signage in each applicable reserve.
2. Identify the walkway route in each applicable Master plan as one particular function for that reserve.
3. Work to bring private land on the harbour foreshores into the connection, either by public ownership or other agreement.
4. Liaise with National Parks and Wildlife Service to obtain connections into national park lands.
5. Publish a guide to the circuit walkway once the connections are substantially in place.

PERFORMANCE MEASURES

1. Paths and signage installed as required.
2. Publicise linkages.
3. Master plans include walkway function and location.
 - 3.1 Continue negotiation with private land holders.
 - 3.2 Land brought into public use within a reasonable time preferably for inclusion in Project 2000.
4. Connections with national park lands obtained within reasonable time by the Year 2000.
5. A guide published and distributed.

12 OBJECTIVE

To encourage local participation in design, development and management.

MEANS OF ACHIEVING THE OBJECTIVE

1. Continue liaison with local Precinct Committees and other groups prior to undertaking works in reserves other than day to day maintenance.
2. Continue where appropriate to hold on site gatherings with neighbours and other relevant groups or individuals as part of any exercise to plan the future form and use of a reserve.
3. Continue with joint Council and community maintenance and improvement teams like the C-Scheme for particular reserves and projects.
4. Consider inviting neighbourhood groups or individuals to be directly involved in ongoing planning and management of reserves.
5. Publish guides and educational pamphlets to Council's reserves and the activities available therein, possible topics being harbourside access, botanic gardens walk, circuit linear park and North Head Walk.

PERFORMANCE MEASURES

1. Evidence of liaison undertaken to the satisfaction of local groups without undue delay and inefficiency for Council programmes.
2. On-site meetings held where appropriate.
3. Joint Council and community works teams continued and expanded.
4. Confirm efforts to invite neighbourhood groups or individuals to directly participate in on-going planning and maintenance of reserves.
5. Guides and educational pamphlets published providing information on Council's reserves.

13**OBJECTIVE**

Provide for user health, safety and enjoyment.

MEANS OF ACHIEVING THE OBJECTIVE

1. Determine any necessary control on undesirable activities.
2. Determine any necessary control on dogs within reserves. Dog toilet areas provided if necessary.
- 3.1 Production of competent designs for reserves prior to major works being undertaken.
- 3.2 Inclusion of local neighbourhood and user groups in future design and management of reserves.
4. Regular assessment of maintenance needs to ensure minimum public safety risk from the facilities.
5. Consider the provision of additional activities where permitted and consistent with other objectives in order to increase recreational opportunities.
6. Make facilities and access to reserves generally suitable for those with mobility impairments.
7. Ensure that leases and licences include adequate provisions to minimise public risk as well as insurance cover.

PERFORMANCE MEASURES

1. Undesirable activities controlled.
 - 2.1 Park users not threatened by dogs.
 - 2.2 No scattered dog excrement within reserves.
- 3.1 Greater public use of reserves and reduced vandalism.
- 3.2 Local community needs are being met when consideration is given to this objective.
4. Minimum accidents from use of facilities.
5. Additional activities provided after consideration.
6. Facilities and access to reserves generally suitable for those with mobility impairments.
7. Leases and licences include adequate provision to minimise public risk as well as insurance cover.

14**OBJECTIVE**

Retain opportunities to use open space for special events or projects and for future activities or structures if need becomes apparent.

MEANS OF ACHIEVING THE OBJECTIVE

1. Consider the making or renewal of leases, licences or any other estate or permit, as appropriate.
2. At each lease, licence or permit renewal consider the need to continue the activity.

PERFORMANCE MEASURES

1. Periodic assessment of whether community recreation needs are met by current lease arrangements.
2. Confirmation that consideration is given of the need to continue the particular land use activity at the time of lease, licence or permit renewal.

